



Power Your Drive for Fleets

Charging Infrastructure Support for Medium- & Heavy-Duty Electric Vehicles

Our goal is to make it easier for organizations to transition to an electric fleet, which can reduce operating costs, eliminate tailpipe emission, and simplify maintenance.

As part of our commitment to clean transportation and clean air, SDG&E is implementing the **Power Your Drive for Fleets** program to install the charging infrastructure needed to electrify medium- and heavy-duty (MD/HD) vehicles.

PROGRAM OVERVIEW

\$107 million

budget over 5 years

300+ customer sites

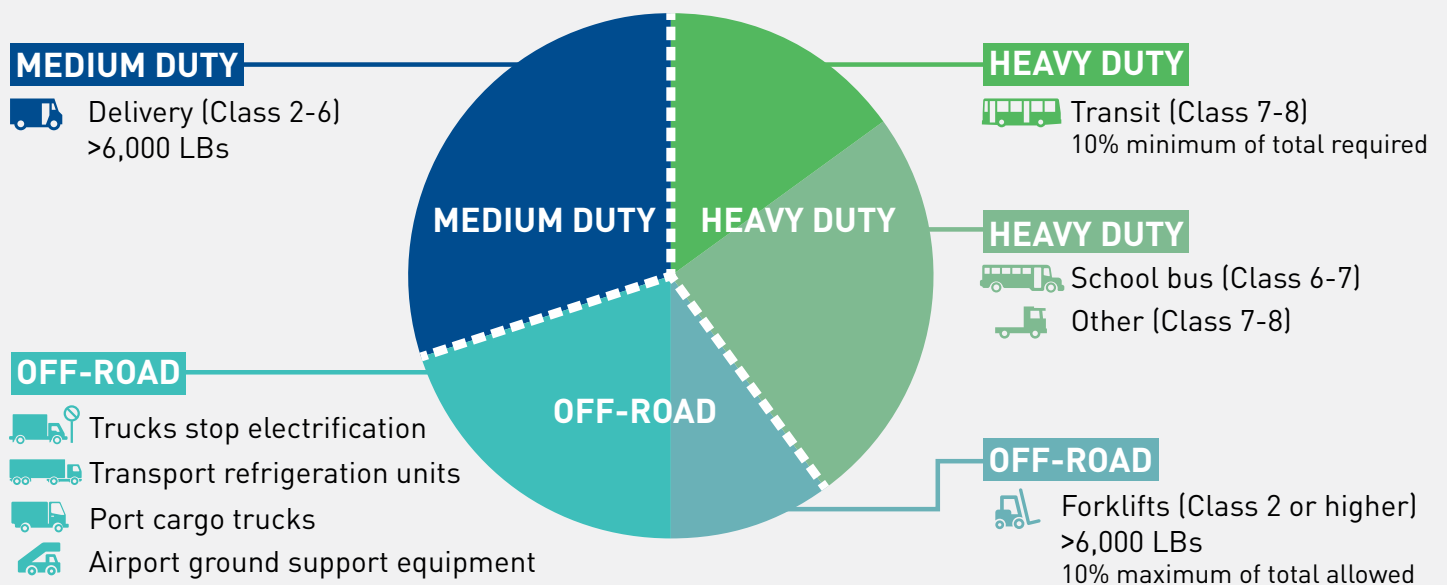
commercial and private fleets

3,000+ new EVs

on- and off-road Class 2-8

Program targets a diverse mix of on-road and off-road, medium- and heavy-duty vehicle types*

VEHICLE TYPE ESTIMATES



*Actual representation of vehicle types subject to vary based on program implementation, project costs, and market readiness.

Want to learn more about the program? Visit sdge.com/evfleets

Ready to talk to a customer solutions specialist? Visit sdge.com/mdhd-interest-form

PROGRAM REQUIREMENTS



Demonstrate commitment to procure **a minimum of 2 electric vehicles**



Demonstrate **long-term electrification growth** plan and schedule of load increase



Provide data related to charger usage for a minimum of **5 years**



Own or lease the property where chargers are installed, and operate and maintain vehicles and chargers **for minimum of 10 years**

[See if you qualify >>](#)

CHARGER REBATES

You can select from a variety of EV charger options from our **approved vendor list**. School buses, transit buses, and sites located in disadvantaged communities that are not a Fortune 1000 company are eligible for the EVSE rebates based on the power output of the charger.

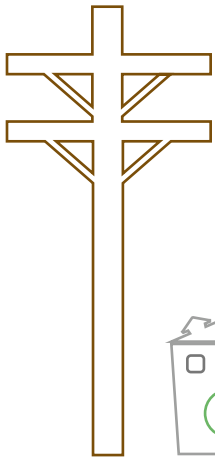
[Use our rebate calculator to see how much you could save >>](#)

Maximum rebate amounts per charger power level

| EVSE power | Max. rebate amount* |
|--------------------|----------------------|
| Up to 19.2kW | \$3,000 per charger |
| 19.3kW up to 50kW | \$15,000 per charger |
| 50.1kW up to 150kW | \$45,000 per charger |
| 150.1kW and above | \$75,000 per charger |

*Eligible sites will receive a rebate for each qualified charger for the lesser of 50% of the cost of the charger or the maximum amount based on power output as detailed above, not to exceed 50% of the cost of the charger.

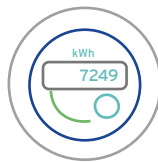
INFRASTRUCTURE INCENTIVES



Power Lines



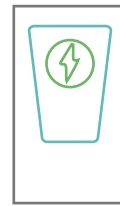
Transformer



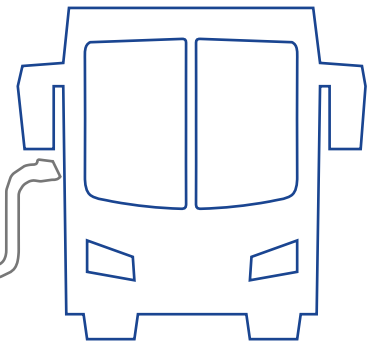
Meter



Electric Panel



Charger



Plug-In Electric Vehicle

Option 1: SDG&E-owned infrastructure SDG&E pays for, constructs, owns, and maintains all infrastructure up to the charging station. Customer owns & pays for charging stations.

Option 2: Customer-owned infrastructure SDG&E pays for, constructs, owns, and maintains infrastructure to the meter. Customer pays for, constructs, owns, and maintains infrastructure behind the meter for a rebate of up to 80% of the costs.

Want to learn more about the program? Visit sdge.com/evfleets
Ready to talk to a customer solutions specialist? Visit sdge.com/mdhd-interest-form