

Committed to Progress

Leading the way in clean transportation

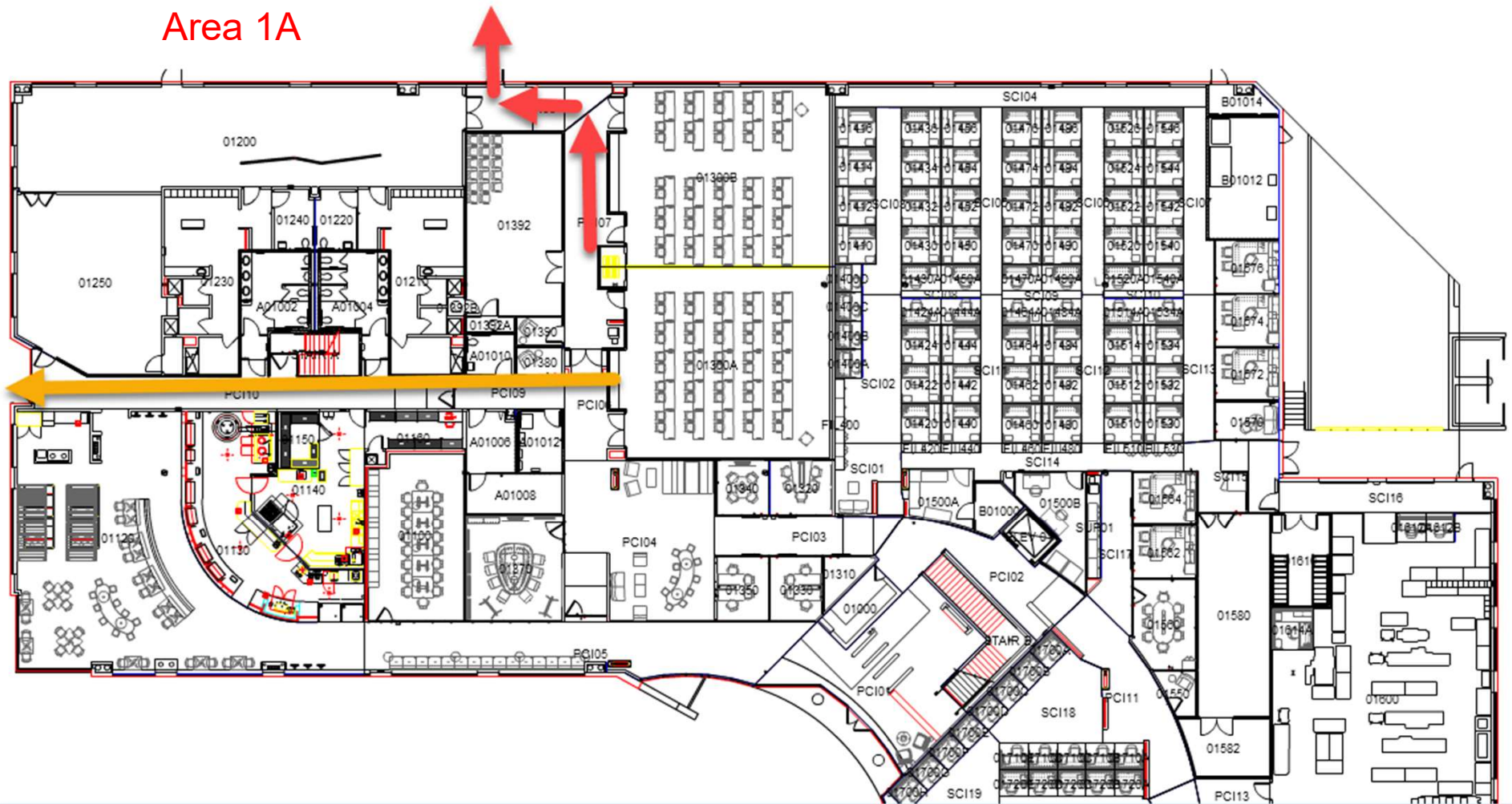


Program Advisory Council Priority Review Program Update September 25, 2018

Safety Message

Guests in the auditoriums would be evacuated to Area 1A.

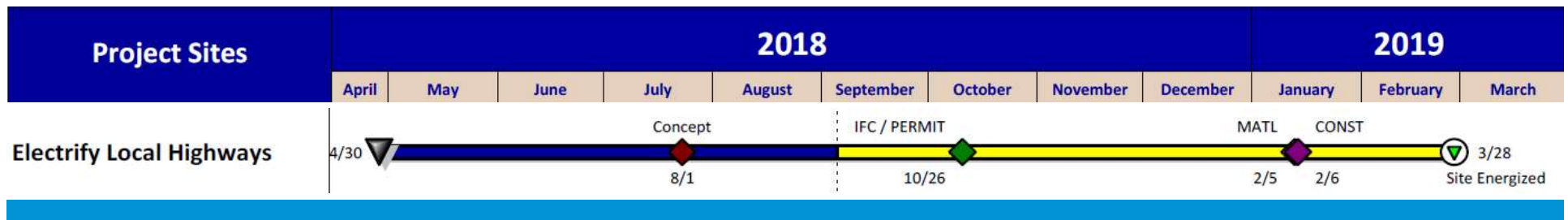
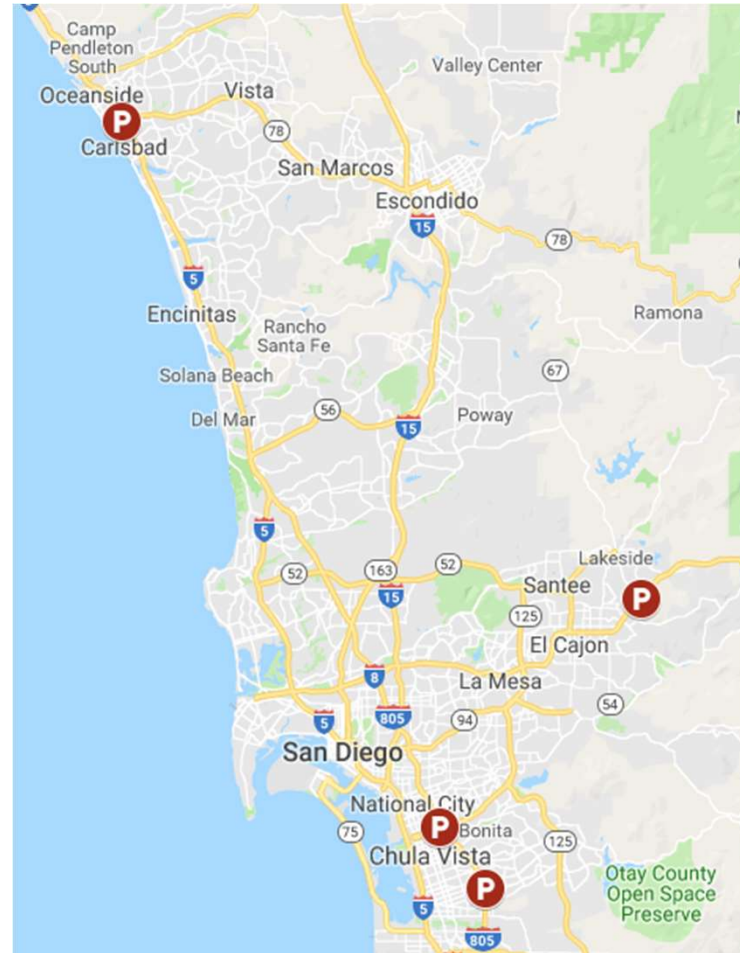
The red arrows would be the fastest way out. The orange arrow is the 2nd best route of the building.



Electrify Local Highways



- **Project Manager:** Praem Kodiath
- **Program Design:**
 - 4 Park and Ride locations:
 - National City
 - El Cajon
 - Chula Vista
 - Oceanside
 - 20 L2 & 2 DC per location
- **Program Budget:** \$4M
- **Key Accomplishments:**
 - Initial Design complete and delivered to CALTRANS
 - Tier 2 Advice Letter for EV-TOU rate approved



Fleet Delivery



- **Project Manager:** Hannon Rasool
- **Program Design:**
 - Support approximately 90 all-electric delivery vehicles
 - Level 2 chargers
 - Enrolled customers:
 - UPS – 63 charging stations
 - Amazon – 16 charging stations
- **Program Budget:** \$3.7M

- **Key Accomplishments:**
 - All legal documents signed and returned by UPS and Amazon
 - Preliminary site designs sent to UPS and Amazon
 - Construction to begin in Q1 2019 due to construction freeze during holiday season



Green Shuttles



- **Project Manager:** Devon Rimer

- **Program Design:**

- Up to 5 shuttle locations
- Modifications to infrastructure needs (addressed on slide 5)
- Solar array & storage at one site
- Public charging option

- **Subscriptions:**

- Airport Shuttles
 - San Diego Airport Parking
 - Aladdin
- Workplace shuttle
- San Diego International Airport

- **Program Budget:** \$3.16M

- **Key Accomplishments:**

- Design in progress for 3 sites
- Advice Letter for Public GIR to be filed this week
- Solar array RFI completed, RFP to be released in early October



Green Shuttles: Program Modifications

- **Airport Shuttles Use Case (SDAP & Aladdin)**

- Two 8-hour shifts / 90 miles each shift

12am – 4am Charge Time	4am – 12pm 90 miles	12pm – 3pm Charge Time	3pm – 10pm 90 miles
---------------------------	------------------------	---------------------------	------------------------

- To meet site host needs SDG&E is looking to install 2 DCFCs per site

- **San Diego International Airport (SDIA)**

- Currently applying for grants to get a shuttle in 2019
- SDIA has agreed to accommodate other EV drivers to charge at this location (as specified in the Decision

- **Workplace Shuttle**

- 6 shuttles transporting the employees throughout the day

9pm – 6am Charge Time	6am – 7pm AVG 44 miles	Managed charging Preferences 7pm-9pm
--------------------------	---------------------------	---

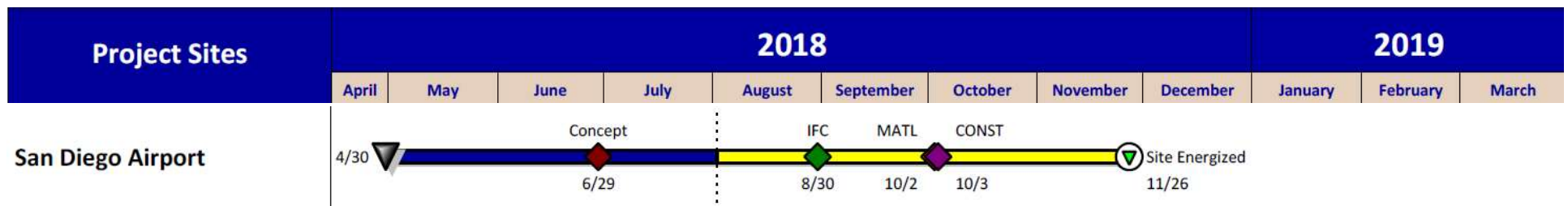
- To meet the site hosts needs SDG&E is looking to install 6 L2 chargers in the shuttle depot area

- **Potential Participant Constraints**

- (D) 18-01-024 states that SDG&E is to work with site host shuttle services servicing a **fixed** route.

Airport Ground Support Equipment

- **Project Manager:** Devon Rimer
- **Program Design Phase 1:**
 - Retrofit 16 ports in Terminal 2
 - Complete load management plan
 - Airport GSE Survey
 - Alignment with onsite solar generation
- **Phase 2:**
 - Collect data from Phase 1 installations for a 6 month period
 - Submit Tier 2 Advice Letter
- **Program Budget:** \$2.4M
- **Key Accomplishments:**
 - Buy-in from American Airlines to retrofit existing equipment
 - 90% Drawings submitted to Airport

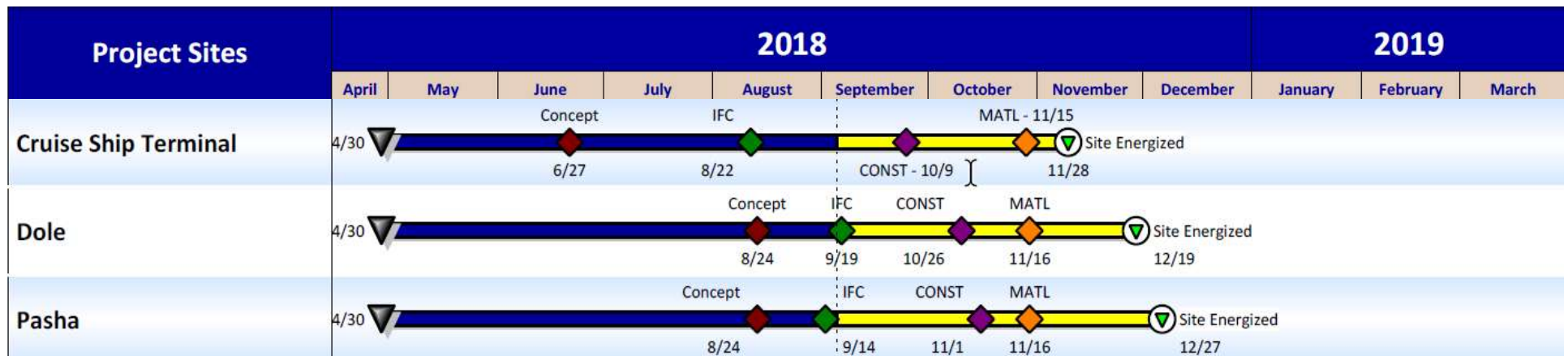


Port Electrification



- **Project Manager:** Natasha Contreras
- **Program Design:**
 - 30-40 installations to support medium-duty/heavy-duty and electric forklift within Port Tidelands
 - *Enrolled customers:*
 - Port of San Diego (Metro Cruise) (9 forklifts)
 - Pasha (2 MD trucks; 4 forklifts)
 - Dole (4 MD trucks)
 - *Pending Subscriptions:*
 - SDG&E is continuing outreach with Port tenants to provide a combination of some or all of the following components: EVSE, electric circuit, load research meter and a data logger.

- **Program Budget:** \$2.4M
- **Key Accomplishments:**
 - Final design and legal documents approved by Port of San Diego
 - Initial designs sent to Pasha and Dole






Dealership Incentives

- **Project Manager:** Natasha Contreras
- **Program Design:**
 - Outreach and Education campaign for EV dealerships in SDG&E service territory
 - Financial incentives provided to sales force for sale of 1,500 EVs and enrollment in EV-TOU rate
- **Program Budget:** \$1.8M
- **Key Accomplishments:**
 - Contracted with Plug-In America to deliver PlugStar program
 - Program launch and stakeholder kick-off held in August 2018
 - Completed first round of dealer recruitment for pilot dealerships
 - Secured four dealership applicants to the program with two pending

PlugStar Preferred Dealer Program

ELIGIBILITY

Dealers applying for enrollment in one of our current PlugStar programs must be able to commit to the following basic program:

- 
Assign 2 or more Sales Staff as EV Specialists
- 
Complete PlugStar Training
- 
Support Local EV Events



Upcoming Activities:

- Pilot dealer participants training scheduled for 9/25
- Pilot phase to run through Q4 2018
- Document Lessons Learned and launch full program in January 2019

Dealership Incentives Cont.

- Benefits for enrolled PlugStar dealers:
 - No cost to dealerships
 - Training for EV specialists and staff
 - Mobile-friendly EV sales tool
 - Welcome package for EV customers
 - EV customer support hotline
 - Promotion of PlugStar by SDG&E, stakeholders
 - \$500 per EV unit sold bonus



Chevrolet Bolt 2018

[Manufacturer website](#)



Compare Favorites

Find Dealer

Overview | [Price & Incentives](#) | Cost Analysis | Reviews | Popularity

Incentives for [San Diego, CA 92121](#), in [San Diego County](#); local utility is [SDG&E](#).



Eligible for HOV Lane Access

Own

Lease

DOWNPAYMENT

Pre-tax cost	\$439
Upfront sales tax	\$0
Downpayment	\$439
California Clean Vehicle Rebate	\$2,500
SDG&E Teacher and First Responder incentive	\$0
Downpayment, minus extra incentives	\$-2,061

LEASE PAYMENT* (\$/MONTH)

Pre-tax lease (Includes federal tax credit)	\$333
Sales tax	\$26
Total monthly lease	\$359

(* Base lease cost over 36 months; excludes DMV registration fees.

INCENTIVES

Federal Tax Credit	\$7,500	Reduces lease payment
California Clean Vehicle Rebate	\$2,500	In addition to lease reduction
SDG&E Teacher and First Responder incentive	\$0	In addition to lease reduction
Total	\$10,000	

Refine Incentives

AB 1082/1083: Electric Vehicle Charging at California Schools, Educational Institutions, State Parks & Beaches - Update

- Filed Assembly Bill (AB) 1082/1083 application on July 31, 2018 to provide ~340 EV chargers at schools, educational institutions, state/city/county parks and beaches
 - School pilot:
 - Install charging stations and infrastructure with time-variant rates at ~30 school facilities and educational institution locations – a total of 184 L2 charging stations and 12 DCFC units
 - Estimated direct costs: \$9.9M
 - Parks and Beaches pilot:
 - Install time-variant public charging stations and infrastructure at 12 state parks and beach locations, and up to 10 city and county park sites, with a total of 64 L2 charging stations and 10 DCFC stations at the state sites, and 56 L2 charging stations and 10 DCFC stations at the city and county sites
 - 100% of city and county park sites would be in DACs
 - Estimated direct costs: \$5.1M at the state sites, and optionally, \$3.8M at the city and county sites. Total estimated cost is \$8.9M.
- CPUC is expected to make decision by December 31, 2018

Questions?

Appendix

Equipment Types



Level 2

- Manufacturer: ChargePoint & Greenlots
- Applicable Project: Highways & Shuttle

70amp Level 2

- Manufacturer: Greenlots
- Applicable Projects: Fleet, Highways, & Shuttle

DC Fast Charger

- Manufacturer: ChargePoint or Greenlots
- Applicable Projects: Highways & Shuttle

eGSE & Forklifts

- Manufacturer: Webasto (Aerovironment)
- Applicable Project: Port & Airport