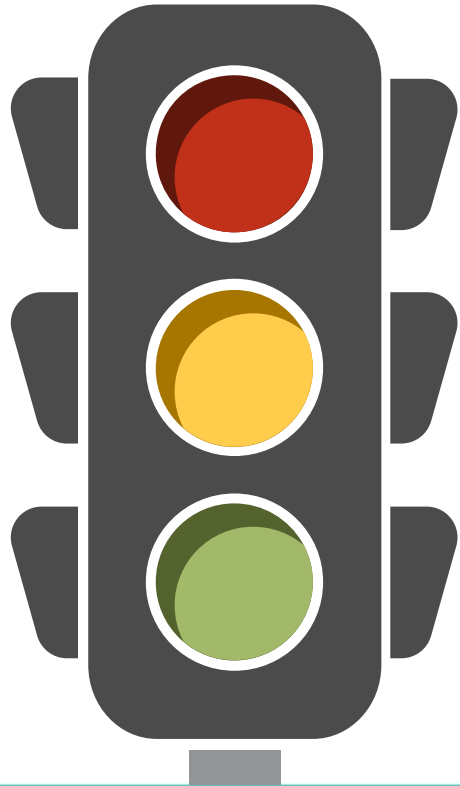


Welcome, and thank you for joining us!



- 1** Please ensure your device is on mute.
- 2** If you would like to make a statement today, please enter your name and organization into the chat box
- 3** When it is time, we will call on you to make your statement. Please remain on mute until then.

Power Your Drive Extension

Community Meeting: May 21, 2020



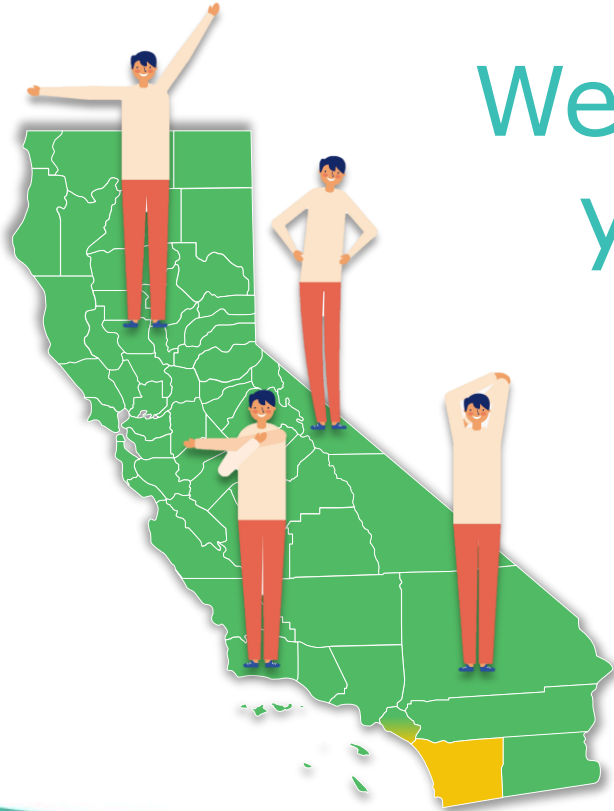
Driving electric
has never been easier.



Power Your Drive Extension

Workshop Overview

Welcome, and thank you for joining us!



IT'S  N.



Power Your Drive Extension

Workshop Agenda



- ✓ Comments from Assigned Commissioner Rechtschaffen
- ✓ Overview of SDG&E's proposed Power Your Drive Extension Program
- ✓ Public Comments

Power Your Drive Extension

Clean Transportation Vision

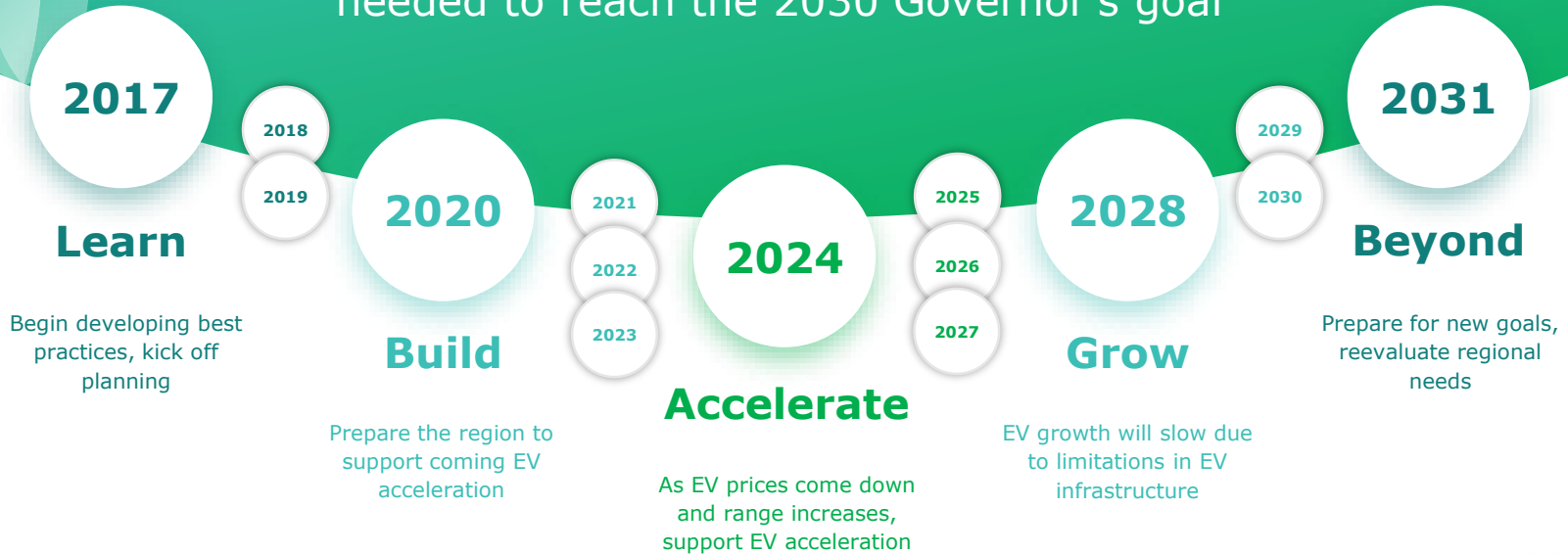


Now's the time to drive an electric vehicle

Power Your Drive Extension

Lofty State Vehicle Targets

Forecasted trends in electric vehicle sales and infrastructure needed to reach the 2030 Governor's goal



Power Your Drive Extension

Current Program Results

Installed, owned, operated, maintained, and billed by SDG&E, at no additional cost

EV Chargers




Building Types

254 businesses, condos, and apartments with 39% of sites in multi-unit dwellings

3,040 electric vehicle charging nozzles; 33% no cost chargers in disadvantaged communities

Charging Made Easy



Reducing Grid Impact

An hourly rate encourages EV charging during the cheapest off-peak times

78% of the energy delivered through the program comes from renewable resources

Clean Energy





Power Your Drive Extension Filing Overview

IT'S  ON!

Power Your Drive Extension

Future Program Need

Remaining potential market

- ✓ Over 400 customer sites on the current interest list
- ✓ Existing customers requesting more chargers due to high EV adoption at their site
- ✓ Market and awareness of EVs has grown since Pilot was launched two years ago
- ✓ Auto manufacturers delivering a significant number of new EV models every year

Extending the program would satisfy customer demand, grow EV adoption in the service territory and reflect lessons learned

- ✓ Transportation remains largest contributor to GHG emissions in territory
- ✓ Bridge to future application; satisfy growing customer demand
- ✓ Consistent with CPUC Transportation Electrification Framework (TEF)

IT'S  N.

Power Your Drive Extension

Future Program Outlook

For **multi-unit dwellings** chargers and “make ready” will be owned by SDG&E; for **workplaces** only the “make ready” will be owned by SDG&E

Install approximately 2,000 chargers 10% of sites installed must be disadvantaged communities

Program duration of two years of construction time

EV Chargers



200 **multi-unit dwellings** and **workplaces**; \$350 participation payment (waived for workplaces and sites in disadvantaged communities)

Building Types



Charging Made Easy



For **multi-unit dwellings**, modified vehicle-grid integration (VGI) rate for rate-to-host and rate-to-driver; for **workplaces**, modified VGI rate or any commercial or industrial rate

Reducing Grid Impact



Program Planning



Power Your Drive Extension

Pending CPUC Application

Pilot and Extension – Area of No Change

Multi-unit dwellings (MUDs) and workplaces, with a 10% DAC target
 DAC defined by SDG&E Territory or State, whichever is broader



Pilot Program

Extension Program

DIFFERENCES

Size	3,040 ports installed at 254 sites	Size	Approximately 2,000 ports and 200 sites
EVSE Ownership	Utility ownership only	EVSE Ownership	Utility at MUDs; customer at workplaces
Workplace Rebate	No rebate available	Workplace Rebate	Up to \$3,000 per port
Non-DAC MUD	\$235 per port	Non-DAC MUD	-\$350 per port
Rate Options	VGI rate only	Rate Options	Modified VGI rate for MUDs Modified VGI or C&I rate for workplaces

Power Your Drive Extension

Bill Impact Summary



San Diego Gas & Electric Company

Electric Bill Impact Summary

		2020	2021	2022	2023
<u>Residential (DR)</u>	Current Monthly Bill ^{1,2}	Annualized Bill Impact	Annualized Bill Impact	Annualized Bill Impact	Annualized Bill Impact
	PYD 2.0	\$150.14	N/A	\$0.43	\$3.84

1) Bill based on Inland & Coastal average customer with 500 kWh monthly usage.

We would like to hear from you



- If you would like to make a statement, please enter your name and organization into the chat box
- Please stay on mute until we call on you to make your statement
- We would like to allow enough time for everyone to speak so please keep your statement to under a few minutes
- To unmute yourself on your phone, press *6