

POLE
P101981

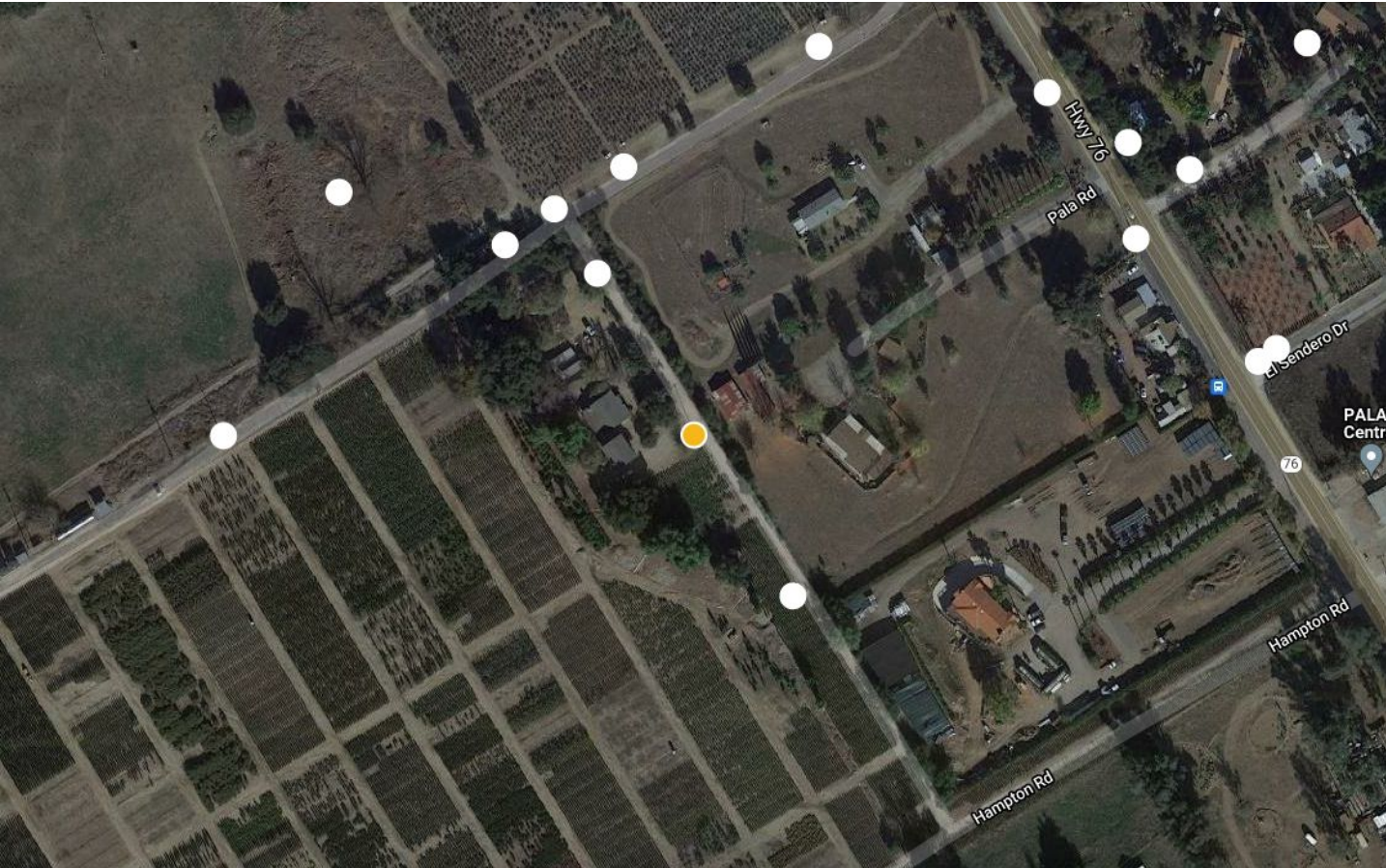
APPROVED
29 Dec 2021

[VIEW ORDER](#)

[VIEW ASSET](#)

LOCATION

Latitude	33.3356973897	Longitude	-117.0077688758
----------	---------------	-----------	-----------------



ATTRIBUTES

Area	217
Material	WOOD

STRUCTURE



P101981

298 Other Infraction



DETAILS

Priority	Priority	Inspector	bcharles@hilination.net
Date	15 Dec 2021	Party To Advise	Electrical Regional Operations

DESCRIPTION

Preform installed incorrectly