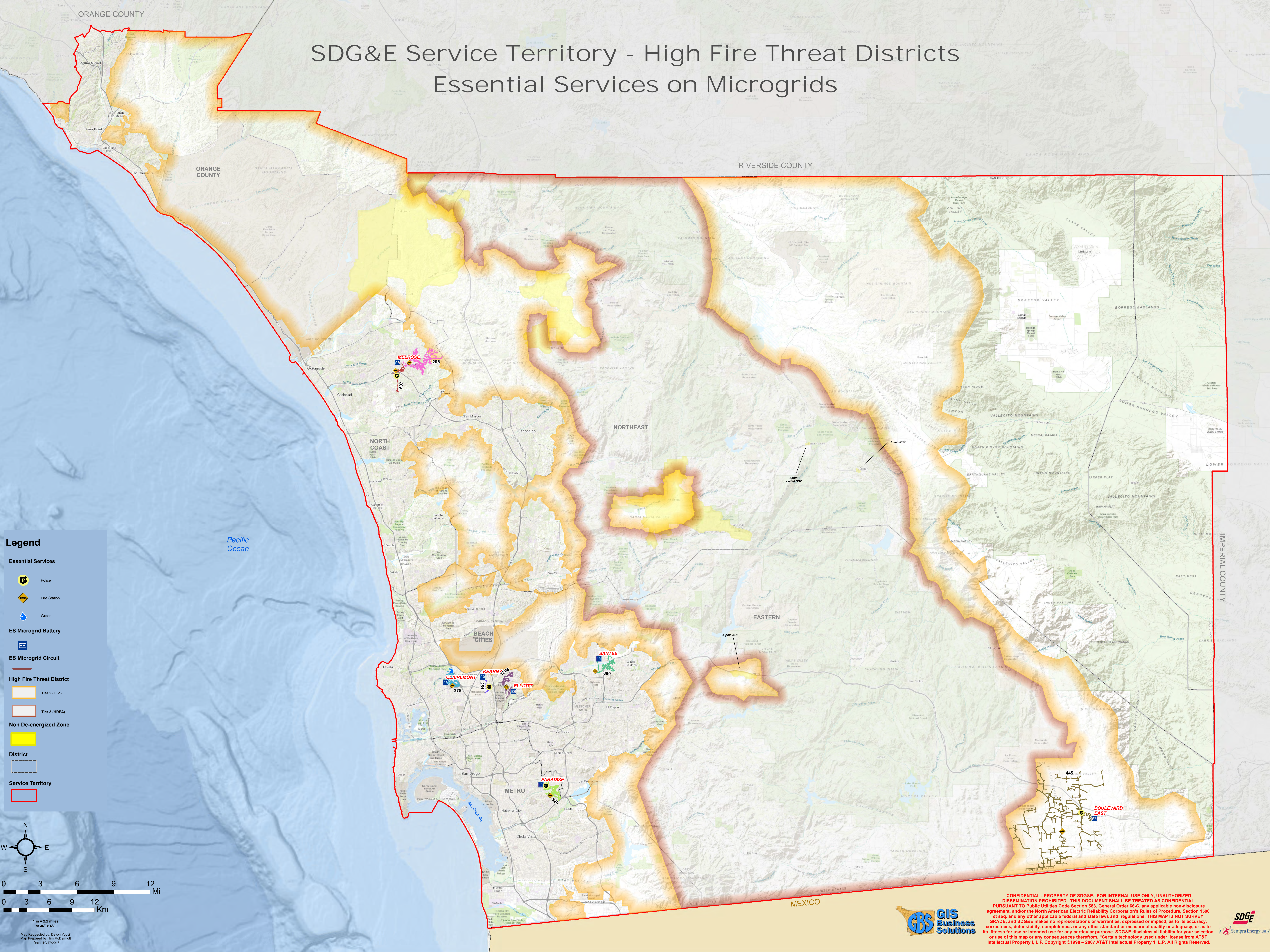


SDG&E Service Territory - High Fire Threat Districts Essential Services on Microgrids



Legend

Essential Services

- Police
- Fire Station
- Water

ES Microgrid Battery

ES Microgrid Circuit

High Fire Threat District

- Tier 2 (FTZ)
- Tier 3 (HRFA)

Non De-energized Zone

District

Service Territory

North arrow and scale bars:

- 0 3 6 9 12 Mi
- 0 3 6 9 12 Km
- 1 in = 2.2 miles at 36" x 48"
- Map Requested by: Devon Youff
- Map Prepared by: Tim McDermott
- Date: 10/17/2016

GBS GIS Business Solutions

SDG&E

Sempra Energy

CONFIDENTIAL - PROPERTY OF SDG&E. FOR INTERNAL USE ONLY. UNAUTHORIZED DISSEMINATION PROHIBITED. THIS DOCUMENT SHALL BE TREATED AS CONFIDENTIAL PURSUANT TO Public Utilities Code Section 583, General Order 66-C, any applicable non-disclosure agreement, and/or the North American Electric Reliability Corporation's Rules of Procedure, Section 1500 et seq. and any other applicable federal and state laws and regulations. THIS MAP IS NOT SURVEY GRADE, and SDG&E makes no representations or warranties, expressed or implied, as to its accuracy, correctness, defensibility, completeness or any other standard or measure of quality or adequacy, or as to its fitness for use or intended use for any particular purpose. SDG&E disclaims all liability for your selection or use of this map or any consequences therefrom. "Certain technology used under license from AT&T Intellectual Property I, L.P. Copyright ©1998 - 2007 AT&T Intellectual Property I, L.P. All Rights Reserved.

Path: Z:\EGIS-elec-ESSITPMini\Projects\AB2868_Circuit_Level\Projects\AB2868_circuit_level_projects_36x48_update.mxd