

SIMPLIFIED SINGLE LINE DIAGRAM (SLD) TEMPLATE

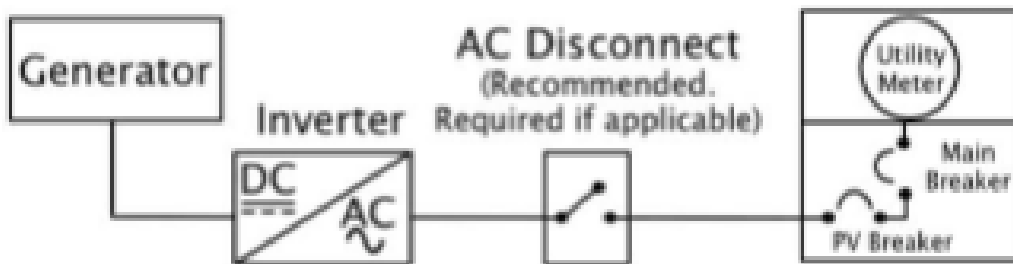
RULE 21 NEM PV ≤ 30 KW/KVA

Updated July 15, 2020

By checking this box I certify all of the following:

- The single line diagram (SLD) below accurately represents the Interconnection Customer (IC) electric service equipment including new and existing generation and energy storage system (ESS) equipment.
- The total inverter nameplate rating does not exceed 30 kW or 30 kVA.
- The inverter(s) must be listed on the CEC list of approved inverters, or be approved by SDG&E as compliant to Rule 21 inverter requirements.
- The IC's service panel meter must be self-contained, i.e. it has internal current transformers.

Simplified Single Line Diagram (SLD)*



*This Simplified SLD represents only equipment that is required by SDG&E for interconnection for this specific application.