

# Preparing together for wildfires and other emergencies



Unexpected events will happen. Your first step in protecting your family, home and property is to be ready ahead of time.

## Meteorology team essential in being prepared for wildfires

In our region, rising temperatures, prolonged drought conditions, and severe weather patterns present us with an ongoing challenge – devastating wildfires. And they can happen any time, for many reasons and become uncontrollable very quickly, as the recent West Fire in Alpine proved. To combat this threat and uphold our No. 1 priority of public safety, we've established a new Fire Science & Climate Adaptation Department. The newest addition to this team is meteorologist Carrie Bowers whose specialty is fire science.

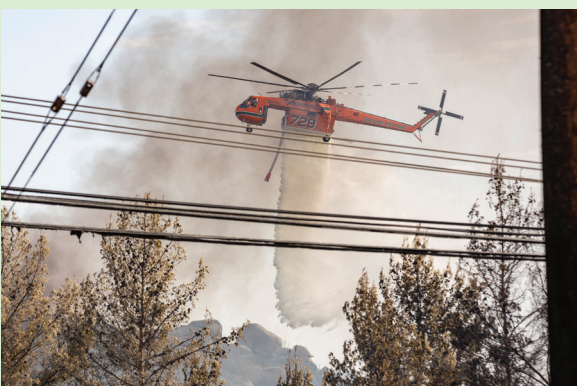
Carrie has extensive experience as a wildland firefighter and served for nine years with the U.S. Forest Service. She transitioned from a firefighter to meteorologist because she was fascinated by the weather classes she took as a firefighter. Her experience with firefighting, coupled with her knowledge of meteorology/fire weather, will help us navigate the risk associated with dangerous conditions.

Team members in our new department continue to refine our Community Fire Safety Program to protect people, property and power lines. We've invested significantly in advanced weather and fire forecast technologies, as well as infrastructure improvements.



**SDG&E's new Fire Science & Climate Adaptation Department includes (from left to right) Director Brian D'Agostino, and fellow meteorologists Katie Giannecchini, Carrie Bowers and Steve Vanderburg.**

- **America's largest utility-owned weather network**, with over 170 weather stations, captures data for analysis by our team of meteorologists. The microclimate forecasts are sent to our electric system operators and local fire agencies to develop staffing plans.
- **Wildfire detection**, an Alert SDG&E Camera network of over 100 high-definition cameras in 20 locations, helps provide early fire detection.
- **Our own weather team** uses fire behavior modeling software they created and the Santa Ana Wildfire Threat Index, which leverages cutting-edge fire science to classify the likelihood of catastrophic wildfires by community.
- **Five fire coordinators** train firefighters, police and other first responders in energy safety. They also train SDG&E field crews in fire prevention and response.
- **Enhanced fire safety measures** – more than 14,000 wood poles have been converted to steel poles in fire-prone areas, 10,000 miles of electrical lines are now underground, 15 drones assess infrastructure, and brush is cleared around 30,000 power poles annually.



**Our helitanker lifts off in minutes, takes less than 60 seconds to refill, and carries 2,650 gallons of water. Most firefighting helicopters carry 370 gallons making our helitanker a vital asset in protecting our communities.**

Learn more about our wildfire preparedness efforts and resources to help you be prepared at [sdge.com/wildfire-safety](https://www.sdge.com/wildfire-safety).

## Plan for safety with tips, videos and checklists

If you suddenly had to deal with an emergency, such as a fire or earthquake, would you know what to do? Your safety may depend on how well prepared you are. Here are some resources to help you get started.



- Learn the basics in our video, "Emergency Preparedness: Make a Kit and a Plan," at [sdge.com/plan](https://sdge.com/plan).
- Use our checklists to get ideas for family emergency and evacuation plans, training and drills, and emergency supply kits for home and vehicles.
- Protect your home in case of wildfire. Get Cal Fire tips and videos on creating defensible space around your home at [ReadyforWildfire.org](https://ReadyforWildfire.org).
- For more tips on emergency preparedness, visit [sdge.com/emergency](https://sdge.com/emergency).

## Stay in-the-know

High-fire danger months are approaching so it's critical to prepare now. If there's a wildfire in your area, the power could be turned off for public safety. Stay informed by signing up for outage notifications via email, phone or text. Sign up for outage notifications in four easy steps\*:

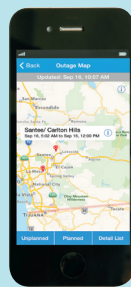
- Go to My Account ([sdge.com/MyAccount](https://sdge.com/MyAccount))
- Click on the 'Alerts and Subscriptions' tab
- Select 'Outage Notifications' from the drop-down menu
- From there, choose the way you want to stay informed

\*If you're already signed up for outage notifications, double-check that your contact information is current.

## For outage info, tap app, map or Twitter

Save yourself a phone call and use online options instead for information on planned and unplanned power outages at [sdge.com/outage](https://sdge.com/outage).

- Download our free mobile app at [sdge.com/mobileapp](https://sdge.com/mobileapp) to view our outage map on your mobile device.
- Our outage map at [sdge.com/outagemap](https://sdge.com/outagemap) shows affected areas and estimated restoration times.
- Enter your service address in the look-up tool at [sdge.com/outagestatus](https://sdge.com/outagestatus) to check the status of state-ordered rotating outages called during regional power emergencies.
- Tweet us or follow us on Twitter @SDGE or [twitter.com/sdge](https://twitter.com/sdge) for news and alerts.



The SDGE app is available for iOS and Android.

## SD Emergency: the must-have app to be prepared

The SD Emergency App will keep you and your family informed with emergency updates, interactive emergency maps and shelter locations. Download at [readysandiego.org](https://readysandiego.org).

## Protect property and be prepared - create a defensible space

In a wildfire, firefighters are stretched to the limit. By designing or modifying the space around your home to resist wildfire, you have a better chance of saving your property – whether or not firefighters can get to it in time. There are three zones around your house to consider:

### ZONE 1: From the structure out to a minimum of 30 - 50 ft.

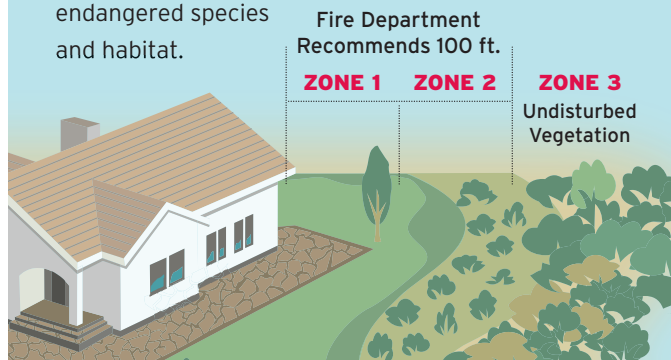
The area nearest your home should contain low-growing plants with low-fuel volume.

### ZONE 2: A minimum of 30 - 100 ft. from structure

Low-growing ground covers that are resistant to fire and low in fuel volume are recommended in this zone.

### ZONE 3: Beyond 100 ft. from structure

Check with environmental regulatory agencies before modifying native vegetation that might include endangered species and habitat. Fire Department Recommends 100 ft.



## Business tips and tools help speed disaster recovery

A disaster, such as a fire or earthquake, can disrupt your business without warning – sometimes at great cost. Being prepared can help you restore operations faster and limit your losses.

You'll find the basics outlined in our four-minute video, "Emergency Preparedness for Businesses,"

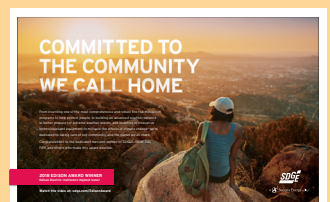


at [sdge.com/bizplan](https://sdge.com/bizplan). Steps you should take include: developing a written plan; training staff; practicing emergency procedures; stocking emergency supplies; maintaining defensible space; backing up and storing information securely offsite; and periodically testing equipment such as electric generators and smoke detectors.

For tools you can use to develop or improve a disaster preparedness program for your business, visit [ready.gov/business](https://ready.gov/business). You'll find an automated disaster recovery plan tool in the business continuity planning software, and a series of business continuity training videos.

## 2018 Edison Award Winner

In June, SDGE was named the winner of the 2018 Edison Award



for enhancing wildfire preparedness from the Edison Electric Institute. This is the electric power industry's most prestigious award. Our wildfire mitigation program has helped protect lives, homes and property from the threat of wildfire. Watch the video at [sdge.com/EdisonAward](https://sdge.com/EdisonAward).