



A Semptra Energy utility

SEASONAL REMINDER: Electricity rates switch from winter to summer pricing on May 1. This may affect your bill since summer rates are often higher than winter rates. If your pricing plan is based on time of use, remember that summer peak hours start on May 1 as well. Learn more at sdge.com/my-energy-bill.

APRIL 2017

Plan your tree planting for safe, reliable electric service

Before planting a tree near power lines, know how it grows. Our tree planting guide at sdge.com/treeguide can help you choose trees you like that won't touch electric lines as they mature. Planting the right tree in the right place today can help prevent power outages and fires in the future.

Before you dig, know what's below

At least two working days before you break ground, call Underground Service Alert at **811** or submit a location request at digalert.org to have the location of buried utility-owned gas pipelines marked first. With this free service, you can avoid the dangers and expense of damaging underground utilities. In addition:

- Have a qualified professional locate gas lines that belong to you – typically those that run from the meter to your gas appliances. Learn more at sdge.com/your-gas-lines.
- When excavating near buried gas lines, dig carefully, using only hand tools.
- Remember the roots when you plant any vegetation. Growing roots can damage underground gas and electric lines.

Never prune trees near electric equipment

For your own safety, never try to prune trees near electric equipment yourself. It's dangerous. If you touch an electric line or

an object such as a tool, ladder or tree branch that's touching an electric line, it can cause a severe shock or death. State law requires any tree pruning within 10 feet of power lines be performed by a line-clearance-qualified arborist.

Inspections available upon request

If you're concerned about vegetation growing close to a power line or transformer, call us at **1-800-411-7343** to request an inspection. If the tree poses a severe hazard, we'll prune it on a priority basis.

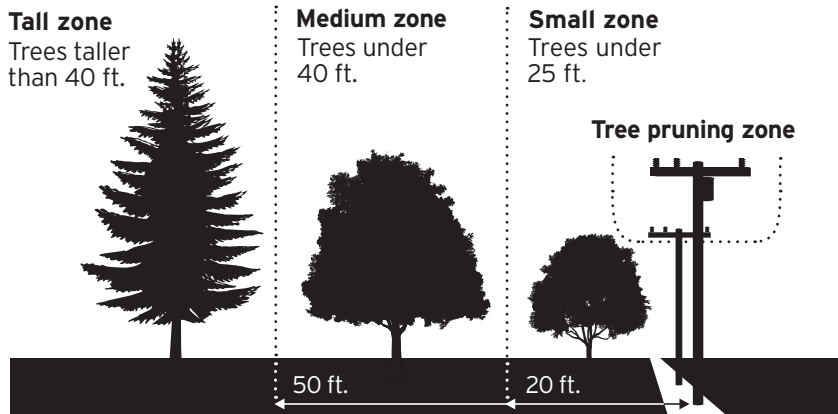
Monitoring 460,000+ trees

A team of vegetation management professionals works every day to maintain more than 460,000 trees that grow close to power lines. An electronic database keeps track of pruning schedules and specific hazards throughout our 4,100-square-mile service area. To see when vegetation management crews are scheduled to work in your area, visit sdge.com/treesafety.

Community education and outreach

For best practices in tree care, worker training and public education, the Arbor Day Foundation® has recognized SDG&E as a Tree Line USA® Utility every year since 2002. We regularly join local cities, schools and community groups in tree planting and educational events. For news about community events, visit sdgenews.com.

Plant trees by height zone and distance from overhead electric lines



You can help prevent power outages and fires by planting the right tree in the right place. Use our tree planting guide at sdge.com/treeguide to choose trees you like that won't touch electric lines as they mature.

Protecting your privacy

Your privacy is important and we're committed to protecting your information. You can browse our privacy policies and practices anytime at sdge.com/privacy.

- To learn how we safeguard your energy-use information, read our **privacy notice**.
- To learn how we protect your privacy when you use our website, read our **privacy policy**.

You can also request both documents by calling **1-800-411-7343** or emailing privacy@sdge.com.

Our privacy policies and procedures are periodically updated as needed to reflect changing legal requirements and best practices. Please check back for updates. You're always welcome to contact us with any questions or suggestions about what we do to protect your privacy.





A Semptra Energy utility

Do you drive an EV? Don't let this bill credit pass you by.

Apply by May 31 for an Electric Vehicle Climate Credit of at least \$50 on your SDG&E® bill if you drive an all-electric or plug-in hybrid electric vehicle. Visit sdge.com/evcc.

Proposition 65 warning

As a result of Proposition 65, the state of California lists substances known to cause cancer or reproductive harm. We want you to be aware of the following so you can minimize exposure to substances on the state's list related to natural gas and electricity distribution.

SDG&E uses natural gas and petroleum products, solvents and other chemicals in our operations. We also deliver natural gas to our customers and use wooden utility poles treated with wood preservatives. Petroleum products, natural gas and their combustion byproducts, wood preservatives and other chemicals used in our operations contain chemicals "known to the state of California" to cause cancer, birth defects or other reproductive harm. Avoid contact with wooden utility poles. More safety information can be found at <https://www.epa.gov/ingredients-used-pesticide-products/overview-wood-preservative-chemicals-0>.

Natural gas

In its original state, natural gas contains substances on the state's list of substances known to cause cancer or reproductive harm.

To reduce exposure, leave the area of the gas leak and call us immediately at **1-800-411-7343**.

Natural gas combustion

All combustion, including the combustion of natural gas, produces substances on the state's list of substances known to cause cancer or reproductive harm.

Facilities and work sites

Some materials found at our facilities and work sites contain substances on the state's list of substances known to cause cancer or reproductive harm. We handle all materials carefully for your good health as well as ours; however, exposure to substances on the state's list may occur at these locations.

For more information, visit the state's Proposition 65 website at oehha.ca.gov/proposition-65.

Advertencia de la Proposición 65

Como resultado de la Proposición 65, el estado de California proporciona una lista de las sustancias que son conocidas como causantes de cáncer o daños reproductivos. Queremos que esté consciente de lo siguiente para que pueda reducir al mínimo la exposición a las sustancias relacionadas con la distribución de gas natural y electricidad que aparecen en la lista del estado.

En SDG&E usamos gas natural y productos de petróleo, solventes y otras sustancias químicas en nuestras operaciones. Asimismo, distribuimos gas natural a nuestros clientes y utilizamos postes de madera tratados con conservantes para madera para el servicio público de electricidad. Los productos de petróleo, el gas natural y sus derivados de la combustión, junto con conservantes para madera y otras sustancias químicas utilizadas en nuestras operaciones contienen químicos "conocidos por el estado de California" como causantes de cáncer, defectos congénitos u otros daños reproductivos. Evite el contacto con postes de madera de servicios públicos eléctricos. Puede encontrar más información de seguridad en <https://www.epa.gov/ingredients-used-pesticide-products/overview-wood-preservative-chemicals-0>.

Gas natural

En su estado original, el gas natural contiene sustancias que aparecen en la lista del estado de sustancias conocidas como causantes de cáncer o daños reproductivos. Para reducir la exposición, abandone el lugar de la fuga de gas y llámenos inmediatamente al **1-800-311-7343**.

Combustión del gas natural

Toda combustión, incluida la combustión del gas natural, produce sustancias que se mencionan en la lista del estado de sustancias conocidas como causantes de cáncer o daños reproductivos.

Instalaciones y sitios de trabajo

Algunos materiales que se encuentran en nuestras instalaciones y lugares de trabajo contienen sustancias que aparecen en la lista del estado de sustancias conocidas como causantes de cáncer o daños reproductivos. Manejamos todos los materiales con precaución para cuidar su buena salud y la nuestra; no obstante, la exposición a sustancias mencionadas en la lista del estado tal vez ocurra en estos lugares.

Para más información, visite el sitio web de la Proposición 65 que tiene el estado en oehha.ca.gov/proposition-65.

Protegemos su privacidad

Su privacidad es importante y tenemos el compromiso de proteger su información. Puede consultar nuestras políticas y prácticas de privacidad en cualquier momento en es.sdge.com/privacy.



- Para conocer cómo salvaguardamos la información sobre su consumo de energía, lea nuestro **aviso de privacidad**.
- Para saber cómo protegemos su privacidad cuando usa nuestro sitio web, lea nuestra **política de privacidad**.

También puede solicitar ambos documentos llamando al **1-800-311-7343** o enviando un mensaje por correo electrónico a privacy@sdge.com.

Nuestras políticas y procedimientos de privacidad se actualizan periódicamente, según sea necesario, para reflejar los cambiantes requisitos legales y mejores prácticas. Por favor, vuelva a visitarnos para conocer las actualizaciones. Siempre puede ponerse en contacto con nosotros si tiene alguna duda o sugerencia acerca de lo que hacemos para proteger su privacidad.