

**Attachment 4.4-B:
Hydrologic Features
Map 2 of 5**

**TL674A Reconfiguration &
TL666D Removal Project**

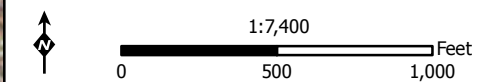
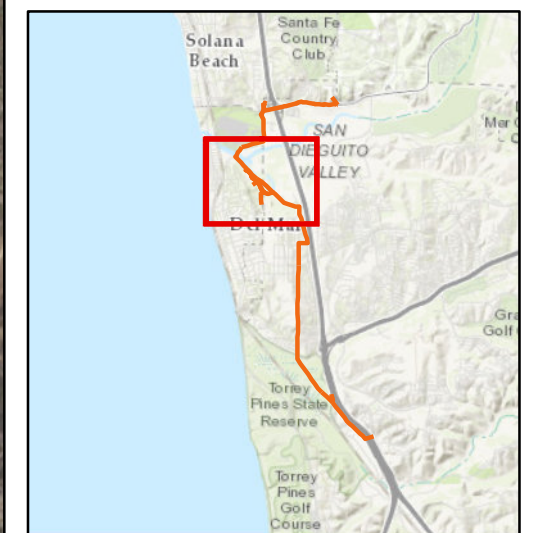
- ◆ Underground Structure
- ◇ Overhead Structure
- ✕ Guard Structure
- Existing 12 kV Overhead
- - - New 12 kV Underground
- - - Remove 12 kV Overhead
- Remove 69 kV Overhead, Retain 12 kV Overhead
- - - Remove 69 kV and 12 kV Overhead

Hydrological Features

- National Wetland Inventory Feature
- ⋯ Artificial Path
- Stream/River

Jurisdictional Waters Type

- Non-Wetland Waters
- Wetland



Z:\Projects\SDGE Del Mar\MX\SDPE\Hydro\Hydro Features v2.mxd

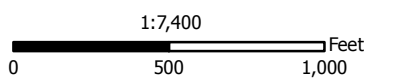
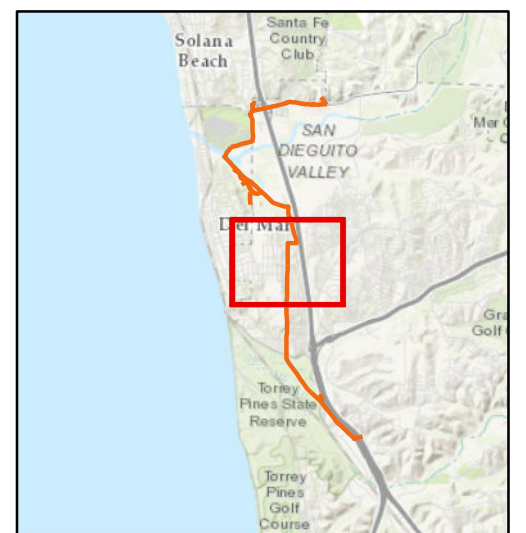
**Attachment 4.4-B:
Hydrologic Features
Map 3 of 5**

**TL674A Reconfiguration &
TL666D Removal Project**

- ◆ Overhead Structure
- ✕ Guard Structure
- Remove 69 kV Overhead
- Remove 69 kV Overhead, Retain 12 kV Overhead

Hydrological Features

- National Wetland Inventory Feature



**Attachment 4.4-B:
Hydrologic Features
Map 4 of 5**

**TL674A Reconfiguration &
TL666D Removal Project**

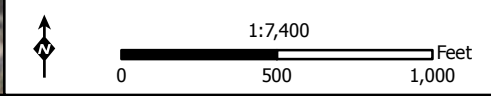
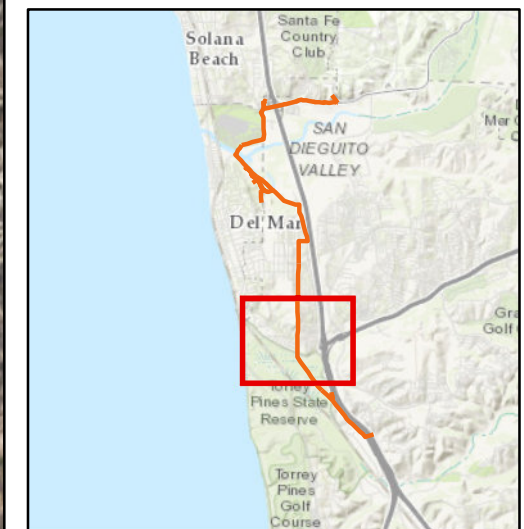
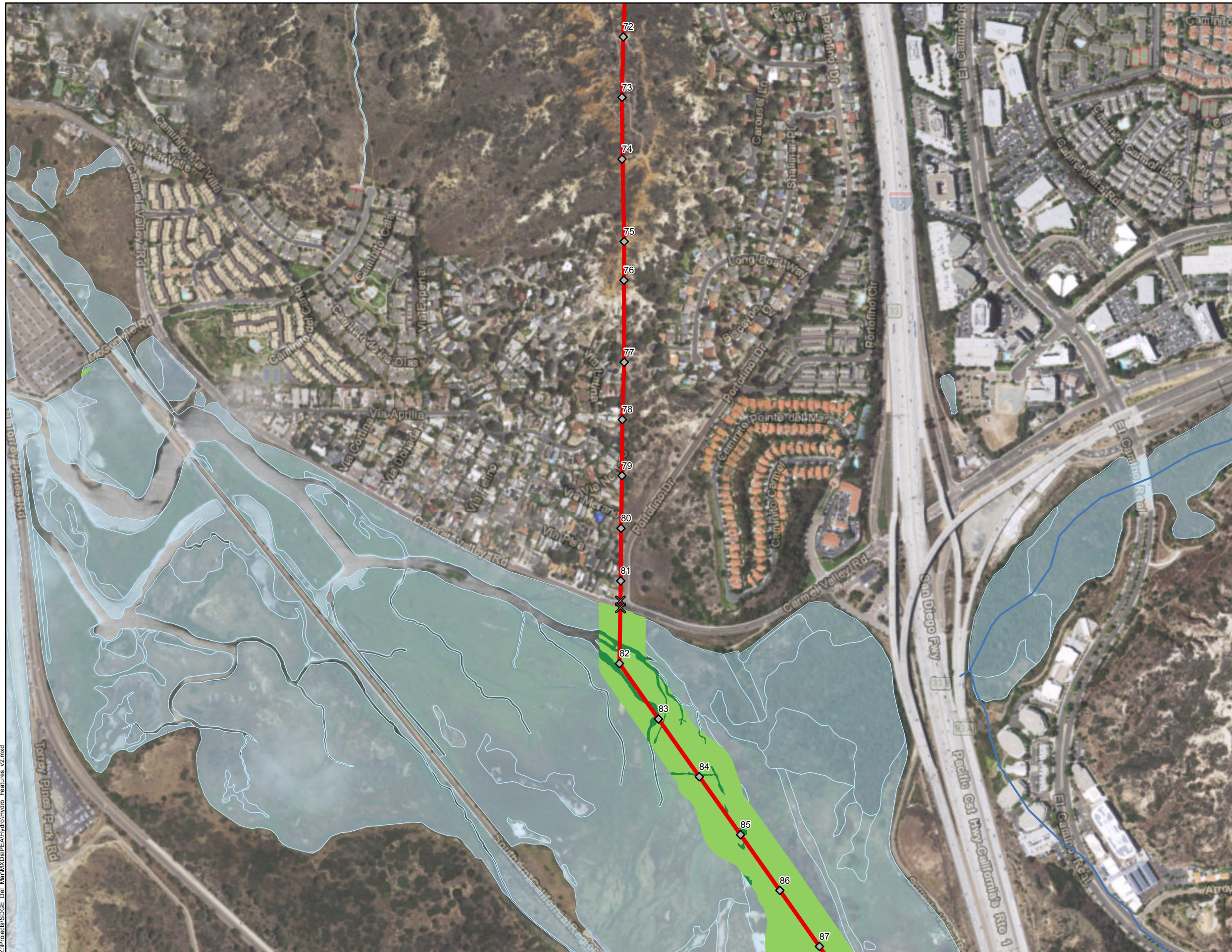
- ◆ Overhead Structure
- ✕ Guard Structure
- Remove 69 kV Overhead

Hydrological Features

- National Wetland Inventory Feature
- Stream/River

Jurisdictional Waters Type

- Non-Wetland Waters
- Wetland



Z:\Projects\SDGE\Del Mar\MXDs\PE\Hydro\Hydro Features v2.mxd

**Attachment 4.4-B:
Hydrologic Features
Map 5 of 5**

**TL674A Reconfiguration &
TL666D Removal Project**

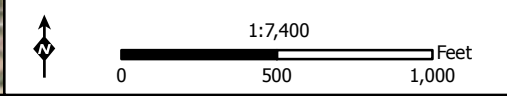
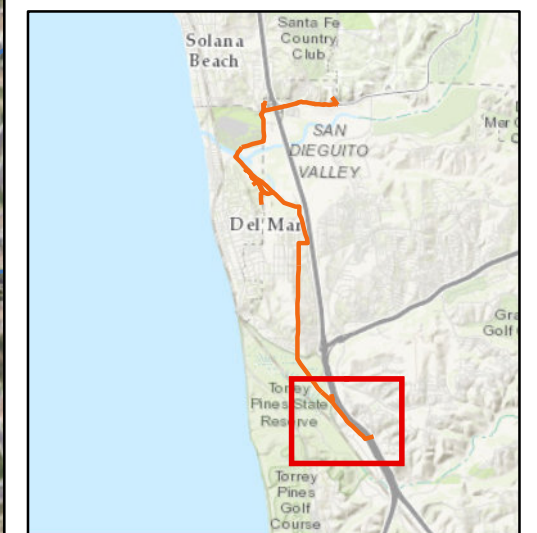
- ◆ Underground Structure
- ◇ Overhead Structure
- ✕ Guard Structure
- New 12 kV Underground
- Remove 12 kV Overhead
- Remove 69 kV Overhead
- Remove 69 kV Overhead, Retain 12 kV Overhead
- Existing Underground Power Line

Hydrological Features

- National Wetland Inventory Feature
- Artificial Path
- Stream/River

Jurisdictional Waters Type

- Non-Wetland Waters
- Wetland



Z:\Projects\SDGE Del Mar\MXDs\PE\Hydro\Hydro Features v2.mxd

