



Shivani Sidhar
Regulatory Case Manager
San Diego Gas and Electric Company
8330 Century Park Court
San Diego, CA 92123-1530

August 26, 2016

Sent Via Electronic Mail and FedEx

A.15-09-010
Wildfire Expense Memorandum Account

Nils Stannik
Office of Ratepayer Advocates
505 Van Ness Avenue, Room 4108
San Francisco, CA 94102

Re: SDG&E Supplemental Response to ORA Data Request 09 – Wildfire Expense Memorandum Account

Dear Mr. Stannik,

Attached please find SDG&E's supplemental response to ORA Data Request 09 (ORA-SDG&E-A.15-09-010-09), dated August 5, 2016. SDG&E's supplemental response includes general objections, narrative responses and attachments.

If you have any questions or require additional information, please feel free to contact me by phone at (858) 637-7914 or e-mail: SSidhar@semprautilities.com.

Sincerely,

Signed

Shivani Sidhar
Regulatory Case Manager

Enclosures

cc: Chris Lyons – SDG&E
Stacie Atkinson – SDG&E
Ed Moldavsky - ORA

**ORA DATA REQUEST
ORA-SDG&E DR-09, Q1-7
SDG&E WEMA PROCEEDING - A.15-09-010
SDG&E SUPPLEMENTAL RESPONSE
DATE RECEIVED: August 5, 2016
DATE RESPONDED: August 26, 2016**

I. GENERAL OBJECTIONS

1. SDG&E objects generally to each request to the extent that it seeks information protected by the attorney-client privilege, the attorney work product doctrine, statutory mediation confidentiality (see Cal. Evid. Code §§ 1115-28) or any other applicable privilege or evidentiary doctrine. No information protected by such privileges will be knowingly disclosed.
2. SDG&E objects generally to each request that is overly broad and unduly burdensome. As part of this objection, SDG&E objects to discovery requests that seek “all documents” or “each and every document” and similarly worded requests on the grounds that such requests are unreasonably cumulative and duplicative, fail to identify with specificity the information or material sought, and create an unreasonable burden compared to the likelihood of such requests leading to the discovery of admissible evidence. Notwithstanding this objection, SDG&E will produce all relevant, non-privileged information not otherwise objected to that it is able to locate after reasonable inquiry.
3. SDG&E objects generally to each request to the extent that the request is vague, unintelligible, or fails to identify with sufficient particularity the information or documents requested and, thus, is not susceptible to response at this time.
4. SDG&E objects generally to each request that: (1) asks for a legal conclusion to be drawn or legal research to be conducted on the grounds that such requests are not designed to elicit facts and, thus, violate the principles underlying discovery; (2) requires SDG&E to do legal research or perform additional analyses to respond to the request; or (3) seeks access to counsel’s legal research, analyses or theories.
5. SDG&E objects generally to each request to the extent it seeks information or documents that are not reasonably calculated to lead to the discovery of admissible evidence.
6. SDG&E objects generally to each request to the extent that it is unreasonably duplicative or cumulative of other requests.
7. SDG&E objects generally to each request to the extent that it would require SDG&E to search its files for matters of public record such as filings, testimony, transcripts, decisions, orders, reports or other information, whether available in the public domain or through FERC or CPUC sources.
8. SDG&E objects generally to each request to the extent that it seeks information or documents that are not in the possession, custody or control of SDG&E.

ORA DATA REQUEST
ORA-SDG&E DR-09, Q1-7
SDG&E WEMA PROCEEDING - A.15-09-010
SDG&E SUPPLEMENTAL RESPONSE
DATE RECEIVED: August 5, 2016
DATE RESPONDED: August 26, 2016

9. SDG&E objects generally to each request to the extent that the request would impose an undue burden on SDG&E by requiring it to perform studies, analyses or calculations or to create documents that do not currently exist.

10. SDG&E objects generally to each request that calls for information that contains trade secrets, is privileged or otherwise entitled to confidential protection by reference to statutory protection. SDG&E objects to providing such information absent an appropriate protective order. With respect to the Office of Ratepayer Advocates, however, SDG&E will produce such information subject to the requirements of Public Utilities Code Section 583 and General Order 66-C.

II. EXPRESS RESERVATIONS

1. No response, objection, limitation or lack thereof, set forth in these responses and objections shall be deemed an admission or representation by SDG&E as to the existence or nonexistence of the requested information or that any such information is relevant or admissible.

2. SDG&E reserves the right to modify or supplement its responses and objections to each request, and the provision of any information pursuant to any request is not a waiver of that right.

3. SDG&E reserves the right to rely, at any time, upon subsequently discovered information.

4. These responses are made solely for the purpose of this proceeding (A.15-09-010) and for no other purpose.

**ORA DATA REQUEST
ORA-SDG&E DR-09, Q1-7
SDG&E WEMA PROCEEDING - A.15-09-010
SDG&E SUPPLEMENTAL RESPONSE
DATE RECEIVED: August 5, 2016
DATE RESPONDED: August 26, 2016**

III. RESPONSES

Request 1:

Please provide monthly recorded expense amounts for Vegetation Management Account from January 2003 to December 2016 in Excel format. Please include:

- a. data broken down with all sub accounts under Vegetation Management, followed by their recorded expense;
- b. a description of the expense followed by the recorded amounts; and
- c. for any subcontract cost, please provide the name of the subcontractor company, contract length, and contract amount.

Objection: SDG&E objects to this request on the grounds set forth in General Objections 2, 5 and 9. Subject to the foregoing objections, SDG&E responds as follows.

Response:

- a. See the the attachment "TTBA 2003-2016.xls," which contains responsive information from SDG&E's Tree Trimming Balancing Account.
- b. See response to 1a.
- c. See response to 1a.

**ORA DATA REQUEST
ORA-SDG&E DR-09, Q1-7
SDG&E WEMA PROCEEDING - A.15-09-010
SDG&E SUPPLEMENTAL RESPONSE
DATE RECEIVED: August 5, 2016
DATE RESPONDED: August 26, 2016**

Request 2:

Please provide the number of employees and their position titles under the Vegetation Management Account from January 2003 to December 2016 in Excel format, as well as an organizational chart of the employees.

Objection: SDG&E objects to this request on the grounds set forth in General Objections 2, 5 and 9. Subject to the foregoing objections, SDG&E responds as follows.

Response:

See the spreadsheet "VM_Employee_2003-2016" provided herewith showing employees from 2003 to 2016. See also the document "VM Organizational Chart" provided herewith that shows a current organizational chart.

ORA DATA REQUEST
ORA-SDG&E DR-09, Q1-7
SDG&E WEMA PROCEEDING - A.15-09-010
SDG&E SUPPLEMENTAL RESPONSE
DATE RECEIVED: August 5, 2016
DATE RESPONDED: August 26, 2016

Request 3:

Please provide:

- a. total Vegetation Management funding for SDG&E's past four GRC cycles;
- b. CPUC Decision numbers for each GRC of the GRC and dollar amount granted for Tree Vegetation Management; and
- c. A breakdown of dollar amounts spent on all sub-accounts under Vegetation Management for the past four GRC cycles.

Objection: SDG&E objects to this request on the grounds set forth in General Objections 2, 5 and 9. Subject to the foregoing objections, SDG&E responds as follows.

Response:

- a. The following numbers are for the Tree Trimming balancing account, and are annual figures authorized for the test year in each related GRC cycle (in test year dollars):
 - Test Year 2004: \$23.215mm (A.02-12-028/D.04-12-015)
 - Test Year 2008: \$19.652mm (A.06-12-009/D.08-07-046)
 - Test Year 2012: \$25.500mm (A.10-12-005/D.13-05-010)
 - Test Year 2016: \$24.559mm (A.14-11-003/D.16-06-064)
- b. See response to 3a.
- c. See response to 1a.

ORA DATA REQUEST
ORA-SDG&E DR-09, Q1-7
SDG&E WEMA PROCEEDING - A.15-09-010
SDG&E SUPPLEMENTAL RESPONSE
DATE RECEIVED: August 5, 2016
DATE RESPONDED: August 26, 2016

Request 4:

Please provide a detailed explanation of all the improvements or changes in SDG&E's Vegetation Management practices for the last 10 years. For each of the practices, please provide the cost of that improvement/change and explain in detail.

Objection: SDG&E objects to this request on the grounds set forth in General Objections 2, 5 and 9. Subject to the foregoing objections, SDG&E responds as follows.

Response:

Improvements and changes in SDG&E Vegetation Management practices have included the following:

1. **Increased frequency in tree inspections in the Highest Risk Fire Areas (HRFA)**

In 2010, SDG&E implemented an annual, off-cycle tree inspection patrol in areas of the service territory identified as having the greatest fire risk. This patrol is performed in addition to the routine-scheduled inspection of the same area. The intent and scope of the off-cycle patrol is to identify any non-compliant tree condition and/or hazard tree condition to ensure the safety and reliability of the electrical system and avoid fire. There are approximately 100,000 inventory trees in the HRFA. The off-cycle HRFA patrol has been performed each year since 2010. The average, annual cost of this additional inspection and work over the years has been \$185k.

2. **Off-cycle Century Plant patrol**

In 2011, SDG&E Vegetation Management implemented an off-cycle inspection of Century plants (*Agave* spp) in its service territory. Century plants produce a tall flower-bearing flower stalk at the end of their life cycle. The flower stalk can grow 30-40 feet and, therefore, can reach the height to contact electrical conductors and start a fire. The timing of the plant's reproductive cycle is not predictable. Therefore, an off-cycle inspection allows for an additional opportunity to ensure a plant has not sprouted a flower stalk. There are an estimated 16,000 Century plants in SDG&E's service territory. The off-cycle Century plant patrol was performed in 2011, 2013, and 2016. The average, annual cost of this additional inspection and work over the years has been \$151k.

3. **Increased palm trimming scope**

In 2010, SDG&E Vegetation Management expanded its scope of palm trimming to include trees located a greater distance from the power lines. Prior to 2010, palms located approximately fifteen (15) from the power lines were identified to be trimmed. This distance was initially thought to be sufficient to avoid detached palm fronds falling onto

ORA DATA REQUEST
ORA-SDG&E DR-09, Q1-7
SDG&E WEMA PROCEEDING - A.15-09-010
SDG&E SUPPLEMENTAL RESPONSE
DATE RECEIVED: August 5, 2016
DATE RESPONDED: August 26, 2016

power lines. Experience and outage investigations indicated that, under conditions such as strong winds and line construction, palms located much greater than fifteen feet from the lines could still cause a conflict due to falling fronds. SDG&E now trims palms located fifty (50) feet and greater from the power lines. The average, annual cost of this additional inspection and work over the years has been \$1.4M.

4. Use of Tree Growth Regulators

In 2014, SDG&E Vegetation Management began the use of tree growth regulators (TGR) in conjunction with its tree trimming activities. TGRs are chemicals applied to trees that reduce annual shoot growth of and leaves. The use of this product has proved to be very effective on fast-growing species such as eucalyptus. TGRs are regulated and approved products. SDG&E's application is performed with written consent of the customer. The intent in the use of TGR is to suppress tree growth, reduce frequency of tree trimming, improve regulatory compliance, and limit the impact to customers. The annual cost of the use of TGRs since implementation has been \$60k; we have seen an increase in customer approval for the application and expect to reach more customers in the future.

ORA DATA REQUEST
ORA-SDG&E DR-09, Q1-7
SDG&E WEMA PROCEEDING - A.15-09-010
SDG&E SUPPLEMENTAL RESPONSE
DATE RECEIVED: August 5, 2016
DATE RESPONDED: August 26, 2016

Request 5:

Has SDG&E examined other electric utilities' approaches to vegetation management in order to determine best practices and improve its own vegetation management program? If so, please describe, including the nature of this examination, dates (or date ranges), and any changes or effects resulting from the examination.

Response:

SDG&E Vegetation Management (VM) personnel attend utility conferences on an annual basis as part of its educational development for its staff. SDG&E is a member of the International Society of Arboriculture (ISA) and the Utility Arborist Association (UAA). SDG&E's VM staff receive continuing credits for attendance and participation in local and regional events. SDG&E has presented at the International Society of Arborist Conferences and participated in industry panel discussions regarding its program. SDG&E participates in the Utility Safety Summit that bring many utilities and contractors together to network and learn how to further develop work safety practices. Additionally, SDG&E has been a member of the Arbor Day Foundation "Tree Line USA" for 15 consecutive years. The membership requires SDG&E to support five core values – Quality Tree Care work, Annual Worker Training, Tree Planting and Public Education, Tree based Energy Conservation Program, and conduct an Arbor Day Celebration. SDG&E is a member of the San Diego Regional Urban Forests Council (SDRUFC) which is a member-driven coalition of agencies, businesses and educators working to improve our urban forest assets. As a member we help to promote the electrical safety awareness and benefits of right tree in the right place for a cleaner, healthier and more prosperous San Diego region. We are also a member of the North American Transmission Forum (NAFT), a national forum that facilitates monthly meetings to discuss vegetation management best practices and worker safety. Lastly SDG&E is a member of the Greater San Diego Fire Safe Council, and other smaller local organizations to provide outreach and education information, sponsorship and in some partnership for fuel reduction projects in the Greater San Diego County.

**ORA DATA REQUEST
ORA-SDG&E DR-09, Q1-7
SDG&E WEMA PROCEEDING - A.15-09-010
SDG&E SUPPLEMENTAL RESPONSE
DATE RECEIVED: August 5, 2016
DATE RESPONDED: August 26, 2016**

Request 6:

Please provide all subcontractors used for vegetation management since January 2003, including scope of work, contract period, and cost per year.

Objection: SDG&E objects to this request on the grounds set forth in General Objections 2 and 5. Subject to the foregoing objections, SDG&E responds as follows.

Response:

This information will be included in the scope of the response to Request 1a. above.

**ORA DATA REQUEST
ORA-SDG&E DR-09, Q1-7
SDG&E WEMA PROCEEDING - A.15-09-010
SDG&E SUPPLEMENTAL RESPONSE
DATE RECEIVED: August 5, 2016
DATE RESPONDED: August 26, 2016**

Request 7:

Please describe SDG&E's process for selecting a vegetation management contractor. Please include:

- a. Bid solicitation process;
- b. Requirements or guidelines that bidders/contractors must meet;
- c. Requirements for minimum number of bids (if any); and
- d. Cost requirements (i.e. maximum/minimum bid, if any).

Objection: SDG&E objects to this request on the grounds set forth in General Objections 2 and 5. Subject to the foregoing objections, SDG&E responds as follows.

Response:

- a. A summary of the bid solicitation process is below. Additionally, see attached "Vegetation Management Sourcing Overview".
 - SDG&E researches companies that can provide vegetation management services
 - SDG&E sends a Request for Information (RFI) via email or online bidding tool to qualified companies
 - The contractors were screened based on the experience within the industry, the size of their company, their safety plan and overall years of doing business.
 - SDG&E evaluates RFI responses and shortlists contractors to send a Request for Proposal (RFP)
 - RFP is sent out and responses are evaluated by the team
 - Additionally, SDGE requested full disclosure of the cost drivers for each type of labor rate specified in the RFP. These cost drivers included: labor, capital equipment, overhead, insurance, benefits and profit.
 - Contracts are awarded/negotiated
 - Competitive awards were based on a number of criteria as depicted in the table below including experience, service, costs and bidder's overall technical proposal. Critical factors in the team's award determination were experience with California regulations and SDG&E and costs (including price, switching costs, and the cost to maintain competition).

ORA DATA REQUEST
ORA-SDG&E DR-09, Q1-7
SDG&E WEMA PROCEEDING - A.15-09-010
SDG&E SUPPLEMENTAL RESPONSE
DATE RECEIVED: August 5, 2016
DATE RESPONDED: August 26, 2016

- b. Requests For Information (RFI) and Requests For Proposals (RFP) are evaluated with weighted evaluation criteria listed within the “Vegetation Management Sourcing Overview” document referenced in the response to subpart 1(a).
- c. There is no minimum bid requirement.
- d. There are no maximum or minimum cost requirements.

Attachment: VM_Employee_2003-2016

COMPANY	NAME	EMPLID	YEAR	JOBTITLE	DEPARTMENT	SECTION	DIR	MANAGER_NAME	MANAGER_ID
01	Akau,Don	00381	2003	System Forester	Construction Services	Forester	Hale,Michael R	Akau,Don	00381
01	Akau,Don	00381	2003	AREA FORESTER	Construction Services	Vegetation Management	Hale,Michael R	Knowd,Timothy M	47169
01	Akau,Don	00381	2003	System Forester	Construction Services	Vegetation Management	Hale,Michael R	Knowd,Timothy M	47169
01	Akau,Don	00381	2004	System Forester	Construction Services	Forester	Hale,Michael R	Akau,Don	00381
01	Akau,Don	00381	2004	System Forester	Construction Services	Forester	Hale,Michael R	Akau,Don	00381
01	Akau,Don	00381	2005	Sys Forester	Construction Services	Forester	Hale,Michael R	Akau,Don	00381
01	Akau,Don	00381	2005	System Forester	Construction Services	Forester	Hale,Michael R	Akau,Don	00381
01	Akau,Don	00381	2006	Sys Forester	Construction Services	Forester	Hale,Michael R	Akau,Don	00381
01	Akau,Don	00381	2007	Sys Forester	Construction Services	Forester	Hale,Michael R	Akau,Don	00381
01	Akau,Don	00381	2007	Vegetation Mgmt Prgm Mgr	Construction Services	Vegetation Management	Hale,Michael R	Akau,Don	00381
01	Akau,Don	00381	2008	Sys Forester	Construction Services	Forester	Hale,Michael R	Daleo,Michael A	04370
01	Akau,Don	00381	2008	Vegetation Mgmt Prgm Mgr	Construction Services	Vegetation Management	Hale,Michael R	Akau,Don	00381
01	Akau,Don	00381	2009	Vegetation Mgmt Prgm Mgr	Construction Services	Vegetation Management	Hale,Michael R	Akau,Don	00381
01	Akau,Don	00381	2010	Vegetation Mgmt Prgm Mgr	Construction Services	Vegetation Management	Hale,Michael R	Akau,Don	00381
01	Akau,Don	00381	2011	Vegetation Mgmt Prgm Mgr	Construction Services	Vegetation Management	Hale,Michael R	Akau,Don	00381
01	Akau,Don	00381	2012	Vegetation Mgmt Prgm Mgr	Construction Services	Vegetation Management	Woldemariam,Jonathan	Akau,Don	00381
01	Akau,Don	00381	2013	Vegetation Mgmt Prgm Mgr	Construction Services	Vegetation Management	Peterson,Scott N	Akau,Don	00381
01	Akau,Don	00381	2014	Vegetation Mgmt Prgm Mgr	Construction Services	Vegetation Management	Peterson,Scott N	Akau,Don	00381
01	Akau,Don	00381	2015	Vegetation Mgmt Prgm Mgr	Construction Services	Vegetation Management	Peterson,Scott N	Akau,Don	00381
01	Akau,Don	00381	2016	Vegetation Mgmt Prgm Mgr	Construction Services	Vegetation Management	Martinez,Janisse	Akau,Don	00381
01	Baldestamon,Rudy Jun	03625	2007	Sys Supp Analyst	Construction Services	V M P Technical And Cust Supp	Hale,Michael R	Rodgers,Diane	05163
01	Baldestamon,Rudy Jun	03625	2008	Sys Supp Analyst	Construction Services	V M P Technical And Cust Supp	Hale,Michael R	Rodgers,Diane	05163
01	Baldestamon,Rudy Jun	03625	2009	Sys Supp Analyst	Construction Services	V M P Technical And Cust Supp	Hale,Michael R	Rodgers,Diane	05163
01	Baldestamon,Rudy Jun	03625	2010	Sys Supp Analyst	Construction Services	V M P Technical And Cust Supp	Hale,Michael R	Rodgers,Diane	05163
01	Baldestamon,Rudy Jun	03625	2011	Busn Sys Analyst - I	Construction Services	V M P Technical And Cust Supp	Woldemariam,Jonathan	Rodgers,Diane	05163
01	Baldestamon,Rudy Jun	03625	2011	Sys Supp Analyst	Construction Services	V M P Technical And Cust Supp	Hale,Michael R	Rodgers,Diane	05163
01	Baldestamon,Rudy Jun	03625	2012	Busn Sys Analyst - I	Construction Services	V M P Technical And Cust Supp	Peterson,Scott N	Akau,Don	00381
01	Baldestamon,Rudy Jun	03625	2012	Busn Sys Analyst - I	Construction Services	V M P Technical And Cust Supp	Woldemariam,Jonathan	Rodgers,Diane	05163
01	Baldestamon,Rudy Jun	03625	2013	Busn Sys Analyst - I	Construction Services	V M P Technical And Cust Supp	Peterson,Scott N	Rodgers,Diane	05163
01	Baldestamon,Rudy Jun	03625	2014	Busn Sys Analyst - I	Construction Services	V M P Technical And Cust Supp	Peterson,Scott N	Rodgers,Diane	05163
01	Baldestamon,Rudy Jun	03625	2015	Busn Sys Analyst - I	Construction Services	V M P Technical And Cust Supp	Peterson,Scott N	Rodgers,Diane	05163
01	Bohnett,Daniel David	09701	2007	Area Forester	Construction Services	Forester	Hale,Michael R	Daleo,Michael A	04370
01	Bohnett,Daniel David	09701	2007	Area Forester	Construction Services	Vegetation Management	Hale,Michael R	Akau,Don	00381
01	Bohnett,Daniel David	09701	2008	Area Forester	Construction Services	Forester	Hale,Michael R	Daleo,Michael A	04370
01	Bohnett,Daniel David	09701	2009	Area Forester	Construction Services	Forester	Hale,Michael R	Daleo,Michael A	04370
01	Bohnett,Daniel David	09701	2010	Area Forester	Construction Services	Forester	Hale,Michael R	Daleo,Michael A	04370
01	Bohnett,Daniel David	09701	2011	Area Forester	Construction Services	Forester	Hale,Michael R	Daleo,Michael A	04370
01	Bohnett,Daniel David	09701	2012	Area Forester	Construction Services	Forester	Woldemariam,Jonathan	Daleo,Michael A	04370
01	Bohnett,Daniel David	09701	2013	Area Forester	Construction Services	Forester	Peterson,Scott N	Daleo,Michael A	04370
01	Bohnett,Daniel David	09701	2014	Area Forester	Construction Services	Forester	Peterson,Scott N	Daleo,Michael A	04370
01	Bohnett,Daniel David	09701	2015	Area Forester	Construction Services	Forester	Peterson,Scott N	Daleo,Michael A	04370
01	Bohnett,Daniel David	09701	2016	Area Forester	Construction Services	Forester	Martinez,Janisse	Daleo,Michael A	04370
01	Boulden,Eric S	04697	2005	Sys Supp Analyst	Construction Services	V M P Technical And Cust Supp	Hale,Michael R	Gurney,Stephen S	34231
01	Boulden,Eric S	04697	2006	Sys Supp Analyst	Construction Services	V M P Technical And Cust Supp	Hale,Michael R	Rodgers,Diane	05163
01	Crawford,Jennifer J	05602	2007	Sys Supp Analyst	Construction Services	V M P Technical And Cust Supp	Hale,Michael R	Rodgers,Diane	05163
01	Crawford,Jennifer J	05602	2008	Sys Supp Analyst	Construction Services	V M P Technical And Cust Supp	Hale,Michael R	Rodgers,Diane	05163
01	Daleo,Michael A	04370	2004	AREA FORESTER	Construction Services	Forester	Hale,Michael R	Akau,Don	00381

01	Daleo,Michael A	04370	2004	AREA FORESTER	Construction Services	Pole Brushing Program	Hale,Michael R	Miles,Jim S	58262
01	Daleo,Michael A	04370	2005	AREA FORESTER	Construction Services	Forester	Hale,Michael R	Akau,Don	00381
01	Daleo,Michael A	04370	2006	Area Forester	Construction Services	Forester	Hale,Michael R	Akau,Don	00381
01	Daleo,Michael A	04370	2007	Area Forester	Construction Services	Forester	Hale,Michael R	Akau,Don	00381
01	Daleo,Michael A	04370	2007	Sys Forester	Construction Services	Forester	Hale,Michael R	Daleo,Michael A	04370
01	Daleo,Michael A	04370	2008	Area Forester	Construction Services	Forester	Hale,Michael R	Daleo,Michael A	04370
01	Daleo,Michael A	04370	2008	Sys Forester	Construction Services	Forester	Hale,Michael R	Daleo,Michael A	04370
01	Daleo,Michael A	04370	2009	Sys Forester	Construction Services	Forester	Hale,Michael R	Daleo,Michael A	04370
01	Daleo,Michael A	04370	2010	Sys Forester	Construction Services	Forester	Hale,Michael R	Daleo,Michael A	04370
01	Daleo,Michael A	04370	2011	Sys Forester	Construction Services	Forester	Hale,Michael R	Daleo,Michael A	04370
01	Daleo,Michael A	04370	2012	Sys Forester	Construction Services	Forester	Woldemariam,Jonathan	Daleo,Michael A	04370
01	Daleo,Michael A	04370	2013	Sys Forester	Construction Services	Forester	Peterson,Scott N	Daleo,Michael A	04370
01	Daleo,Michael A	04370	2014	Sys Forester	Construction Services	Forester	Peterson,Scott N	Daleo,Michael A	04370
01	Daleo,Michael A	04370	2014	Sys Forester	Construction Services	Forester	Peterson,Scott N	Daleo,Michael A	04370
01	Daleo,Michael A	04370	2015	Sys Forester	Construction Services	Forester	Peterson,Scott N	Daleo,Michael A	04370
01	Daleo,Michael A	04370	2016	Sys Forester	Construction Services	Forester	Martinez,Janisse	Daleo,Michael A	04370
01	Daria,Ernesto W	00289	2003	Sys Supp Analyst	Construction Services	Vegetation Management	Hale,Michael R	Knowd,Timothy M	47169
01	Daria,Ernesto W	00289	2004	Sys Supp Analyst	Construction Services	V M P Technical And Cust Supp	Hale,Michael R	Gurney,Stephen S	34231
01	Daria,Ernesto W	00289	2004	Sys Supp Analyst	Construction Services	Vegetation Management	Hale,Michael R	Knowd,Timothy M	47169
01	Daria,Ernesto W	00289	2005	Sys Supp Spec	Construction Services	V M P Technical And Cust Supp	Martinez,Janisse	Rodgers,Diane	05163
01	DeSonia,David H	22197	2003	Vegetation Mgmt Contr Admtr	Construction Services	Pole Brushing Program	Hale,Michael R	Miles,Jim S	58262
01	DeSonia,David H	22197	2003	Vegetation Mgmt Contr Admtr	Construction Services	Vegetation Management	Hale,Michael R	Knowd,Timothy M	47169
01	DeSonia,David H	22197	2004	Vegetation Mgmt Contr Admtr	Construction Services	Pole Brushing Program	Hale,Michael R	Miles,Jim S	58262
01	DeSonia,David H	22197	2005	Vegetation Mgmt Contr Admtr	Construction Services	Pole Brushing Program	Hale,Michael R	Miles,Jim S	58262
01	DeSonia,David H	22197	2006	Vegetation Mgmt Contr Admtr	Construction Services	Pole Brushing Program	Hale,Michael R	Miles,Jim S	58262
01	DeSonia,David H	22197	2007	Vegetation Mgmt Contr Admtr	Construction Services	Pole Brushing Program	Hale,Michael R	Miles,Jim S	58262
01	DeSonia,David H	22197	2008	Vegetation Mgmt Contr Admtr	Construction Services	Pole Brushing Program	Hale,Michael R	Miles,Jim S	58262
01	DeSonia,David H	22197	2009	Vegetation Mgmt Contr Admtr	Construction Services	Pole Brushing Program	Hale,Michael R	Miles,Jim S	58262
01	DeSonia,David H	22197	2010	Vegetation Mgmt Contr Admtr	Construction Services	Pole Brushing Program	Hale,Michael R	Miles,Jim S	58262
01	DeSonia,David H	22197	2011	Vegetation Mgmt Contr Admtr	Construction Services	Pole Brushing Program	Hale,Michael R	Miles,Jim S	58262
01	DeSonia,David H	22197	2011	Vegetation Mgmt Contr Admtr	Construction Services	Pole Brushing Program	Martinez,Janisse	Webb,Jimmie L	02260
01	Emmet,Richard G	25875	2003	AREA FORESTER	Construction Services	Pole Brushing Program	Hale,Michael R	Miles,Jim S	58262
01	Emmet,Richard G	25875	2003	AREA FORESTER	Construction Services	Vegetation Management	Hale,Michael R	Knowd,Timothy M	47169
01	Emmet,Richard G	25875	2004	AREA FORESTER	Construction Services	Pole Brushing Program	Hale,Michael R	Miles,Jim S	58262
01	Emmet,Richard G	25875	2004	Area Forester	Construction Services	Pole Brushing Program	Martinez,Janisse	Webb,Jimmie L	02260
01	Govers,David	99208	2006	Sys Supp Analyst	Construction Services	V M P Technical And Cust Supp	Hale,Michael R	Rodgers,Diane	05163
01	Govers,David	99208	2007	Sys Supp Analyst	Construction Services	V M P Technical And Cust Supp	Hale,Michael R	Rodgers,Diane	05163
01	Govers,David	99208	2008	Sys Supp Analyst	Construction Services	V M P Technical And Cust Supp	Hale,Michael R	Rodgers,Diane	05163
01	Gurney,Stephen S	34231	2003	Ld Info Sys Analyst	Construction Services	Vegetation Management	Hale,Michael R	Knowd,Timothy M	47169
01	Gurney,Stephen S	34231	2004	Team Leader	Construction Services	V M P Technical And Cust Supp	Hale,Michael R	Gurney,Stephen S	34231
01	Gurney,Stephen S	34231	2004	Ld Info Sys Analyst	Construction Services	Vegetation Management	Hale,Michael R	Knowd,Timothy M	47169
01	Gurney,Stephen S	34231	2005	Team Ldr - IV	Construction Services	V M P Technical And Cust Supp	Martinez,Janisse	Rodgers,Diane	05163
01	Gurney,Stephen S	34231	2005	Team Leader	Construction Services	V M P Technical And Cust Supp	Hale,Michael R	Gurney,Stephen S	34231
01	Haider,Carl S	04402	2004	Sys Supp Analyst	Construction Services	V M P Technical And Cust Supp	Hale,Michael R	Gurney,Stephen S	34231
01	Haider,Carl S	04402	2004	Sys Supp Analyst	Construction Services	Vegetation Management	Hale,Michael R	Knowd,Timothy M	47169
01	Haider,Carl S	04402	2005	Sys Supp Analyst	Construction Services	V M P Technical And Cust Supp	Hale,Michael R	Gurney,Stephen S	34231
01	Haider,Carl S	04402	2006	Sys Supp Spec	Construction Services	V M P Technical And Cust Supp	Martinez,Janisse	Rodgers,Diane	05163

01	Hamelehle,Lori	00334	2003	AREA FORESTER	Construction Services	Forester	Hale,Michael R	Akau,Don	00381
01	Hamelehle,Lori	00334	2003	AREA FORESTER	Construction Services	Vegetation Management	Hale,Michael R	Knowd,Timothy M	47169
01	Hamelehle,Lori	00334	2004	AREA FORESTER	Construction Services	Forester	Hale,Michael R	Akau,Don	00381
01	Hamelehle,Lori	00334	2005	AREA FORESTER	Construction Services	Forester	Hale,Michael R	Akau,Don	00381
01	Hamelehle,Lori	00334	2005	Area Forester	Construction Services	Forester	Martinez,Janisse	Daleo,Michael A	04370
01	Hardesty,Michael C	02921	2004	Vegetation Mgmt Contr Admtr	Construction Services	Pole Brushing Program	Hale,Michael R	Miles,Jim S	58262
01	Hardesty,Michael C	02921	2005	Vegetation Mgmt Contr Admtr	Construction Services	Pole Brushing Program	Hale,Michael R	Miles,Jim S	58262
01	Hardesty,Michael C	02921	2006	Vegetation Mgmt Contr Admtr	Construction Services	Pole Brushing Program	Hale,Michael R	Miles,Jim S	58262
01	Hardesty,Michael C	02921	2007	Vegetation Mgmt Contr Admtr	Construction Services	Pole Brushing Program	Hale,Michael R	Miles,Jim S	58262
01	Hardesty,Michael C	02921	2008	Vegetation Mgmt Contr Admtr	Construction Services	Pole Brushing Program	Hale,Michael R	Miles,Jim S	58262
01	Hartt,Brenda L	03966	2004	Staff Asst	Construction Services	V M P Technical And Cust Supp	Hale,Michael R	Gurney,Stephen S	34231
01	Hartt,Brenda L	03966	2004	Staff Asst	Construction Services	Vegetation Management	Hale,Michael R	Knowd,Timothy M	47169
01	Hartt,Brenda L	03966	2005	Staff Asst	Construction Services	V M P Technical And Cust Supp	Hale,Michael R	Gurney,Stephen S	34231
01	Hartt,Brenda L	03966	2006	Staff Asst	Construction Services	V M P Technical And Cust Supp	Hale,Michael R	Rodgers,Diane	05163
01	Hartt,Brenda L	03966	2007	Staff Asst	Construction Services	V M P Technical And Cust Supp	Hale,Michael R	Rodgers,Diane	05163
01	Hartt,Brenda L	03966	2010	Staff Asst	Construction Services	V M P Technical And Cust Supp	Hale,Michael R	Rodgers,Diane	05163
01	Knowd,Timothy M	47169	2003	Vegetation Mgmt Prgm Mgr	Construction Services	Vegetation Management	Hale,Michael R	Knowd,Timothy M	47169
01	Knowd,Timothy M	47169	2004	Vegetation Mgmt Prgm Mgr	Construction Services	Vegetation Management	Hale,Michael R	Knowd,Timothy M	47169
01	Knowd,Timothy M	47169	2005	Vegetation Mgmt Prgm Mgr	Construction Services	Vegetation Management	Hale,Michael R	Knowd,Timothy M	47169
01	Knowd,Timothy M	47169	2006	Vegetation Mgmt Prgm Mgr	Construction Services	Vegetation Management	Hale,Michael R	Knowd,Timothy M	47169
01	Knowd,Timothy M	47169	2007	Vegetation Mgmt Prgm Mgr	Construction Services	Vegetation Management	Hale,Michael R	Knowd,Timothy M	47169
01	Knowd,Timothy M	47169	2008	Vegetation Mgmt Prgm Mgr	Construction Services	Vegetation Management	Hale,Michael R	Akau,Don	00381
01	Laxina,Cynthia C	03372	2003	Staff Asst	Construction Services	Vegetation Management	Hale,Michael R	Knowd,Timothy M	47169
01	Laxina,Cynthia C	03372	2004	Staff Asst	Construction Services	V M P Technical And Cust Supp	Hale,Michael R	Gurney,Stephen S	34231
01	Laxina,Cynthia C	03372	2005	Staff Asst	Construction Services	V M P Technical And Cust Supp	Hale,Michael R	Gurney,Stephen S	34231
01	Lyle,Randy Lee	09569	2007	Vegetation Mgmt Contr Admtr	Construction Services	Pole Brushing Program	Hale,Michael R	Miles,Jim S	58262
01	Lyle,Randy Lee	09569	2008	Vegetation Mgmt Contr Admtr	Construction Services	Pole Brushing Program	Hale,Michael R	Miles,Jim S	58262
01	Lyle,Randy Lee	09569	2008	Fire Coord	Construction Services	Vegetation Management	Hale,Michael R	Akau,Don	00381
01	Lyle,Randy Lee	09569	2009	Vegetation Mgmt Contr Admtr	Construction Services	Pole Brushing Program	Hale,Michael R	Miles,Jim S	58262
01	Lyle,Randy Lee	09569	2009	Fire Coord	Construction Services	Vegetation Management	Hale,Michael R	Akau,Don	00381
01	Magana,Raquel Sardinha	11135	2009	Staff Asst	Construction Services	V M P Technical And Cust Supp	Hale,Michael R	Rodgers,Diane	05163
01	Magana,Raquel Sardinha	11135	2010	Staff Asst	Construction Services	V M P Technical And Cust Supp	Hale,Michael R	Rodgers,Diane	05163
01	Magana,Raquel Sardinha	11135	2010	Staff Asst	Construction Services	V M P Technical And Cust Supp	Martinez,Janisse	Rodgers,Diane	05163
01	Mc Nally,Sylvia Katharine	12722	2011	Staff Asst	Construction Services	V M P Technical And Cust Supp	Hale,Michael R	Rodgers,Diane	05163
01	Mc Nally,Sylvia Katharine	12722	2012	Staff Asst	Construction Services	V M P Technical And Cust Supp	Peterson,Scott N	Akau,Don	00381
01	Mc Nally,Sylvia Katharine	12722	2012	Staff Asst	Construction Services	V M P Technical And Cust Supp	Woldemariam,Jonathan	Rodgers,Diane	05163
01	Mc Nally,Sylvia Katharine	12722	2012	Staff Asst	Construction Services	V M P Technical And Cust Supp	Peterson,Scott N	Akau,Don	00381
01	Mc Nally,Sylvia Katharine	12722	2013	Staff Asst	Construction Services	V M P Technical And Cust Supp	Peterson,Scott N	Rodgers,Diane	05163
01	Mc Nally,Sylvia Katharine	12722	2013	Staff Asst	Construction Services	V M P Technical And Cust Supp	Peterson,Scott N	Rodgers,Diane	05163
01	Mc Nally,Sylvia Katharine	12722	2014	Staff Asst	Construction Services	V M P Technical And Cust Supp	Peterson,Scott N	Rodgers,Diane	05163
01	Mc Nally,Sylvia Katharine	12722	2014	Staff Asst	Construction Services	V M P Technical And Cust Supp	Peterson,Scott N	Rodgers,Diane	05163
01	Mc Nally,Sylvia Katharine	12722	2015	Staff Asst	Construction Services	V M P Technical And Cust Supp	Peterson,Scott N	Rodgers,Diane	05163
01	Mc Nally,Sylvia Katharine	12722	2016	Staff Asst	Construction Services	V M P Technical And Cust Supp	Martinez,Janisse	Rodgers,Diane	05163
01	Mc Nally,Sylvia Katharine	12722	2016	Staff Asst	Construction Services	V M P Technical And Cust Supp	Martinez,Janisse	Rodgers,Diane	05163
01	Miles,Jim S	58262	2003	Team Leader	Construction Services	Pole Brushing Program	Hale,Michael R	Miles,Jim S	58262
01	Miles,Jim S	58262	2003	Team Leader	Construction Services	Vegetation Management	Hale,Michael R	Knowd,Timothy M	47169
01	Miles,Jim S	58262	2004	Team Leader	Construction Services	Pole Brushing Program	Hale,Michael R	Miles,Jim S	58262

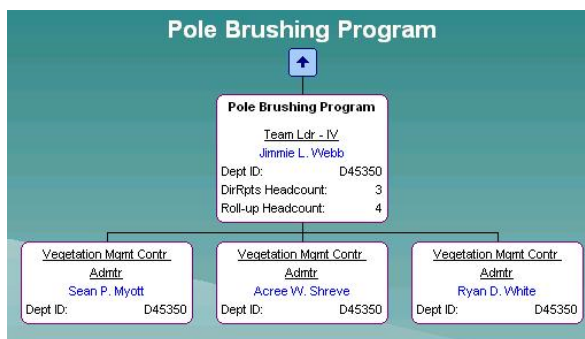
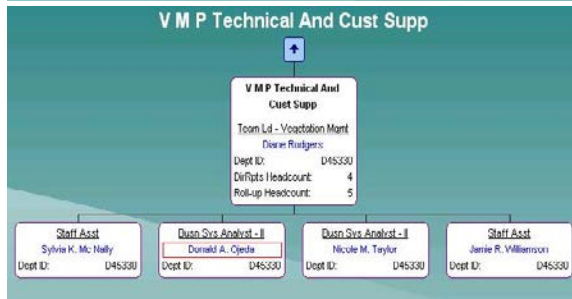
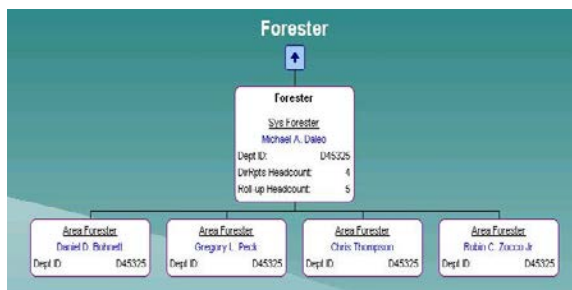
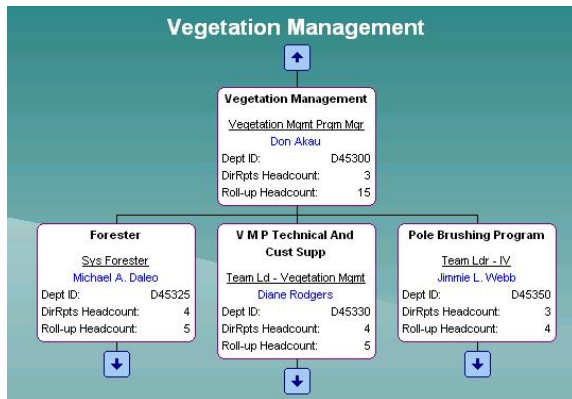
01	Miles,Jim S	58262	2005	Team Leader	Construction Services	Pole Brushing Program	Hale,Michael R	Miles,Jim S	58262
01	Miles,Jim S	58262	2006	Team Ldr - IV	Construction Services	Pole Brushing Program	Hale,Michael R	Miles,Jim S	58262
01	Miles,Jim S	58262	2007	Team Ldr - IV	Construction Services	Pole Brushing Program	Hale,Michael R	Miles,Jim S	58262
01	Miles,Jim S	58262	2008	Team Ldr - IV	Construction Services	Pole Brushing Program	Hale,Michael R	Miles,Jim S	58262
01	Miles,Jim S	58262	2009	Team Ldr - IV	Construction Services	Pole Brushing Program	Hale,Michael R	Miles,Jim S	58262
01	Miles,Jim S	58262	2010	Team Ldr - IV	Construction Services	Pole Brushing Program	Hale,Michael R	Miles,Jim S	58262
01	Miles,Jim S	58262	2011	Team Ldr - IV	Construction Services	Pole Brushing Program	Hale,Michael R	Miles,Jim S	58262
01	Miles,Jim S	58262	2012	Team Ldr - IV	Construction Services	Pole Brushing Program	Woldemariam,Jonathan	Miles,Jim S	58262
01	Miles,Jim S	58262	2012	Team Ldr - IV	Construction Services	Pole Brushing Program	Peterson,Scott N	Akau,Don	00381
01	Miles,Jim S	58262	2013	Team Ldr - IV	Construction Services	Pole Brushing Program	Martinez,Janisse	Webb,Jimmie L	02260
01	Molumbo,William D	14909	2009	Fire Coord	Construction Services	Vegetation Management	Hale,Michael R	Akau,Don	00381
01	Mortier,Hal R	04123	2004	Fire Coord	Construction Services	Vegetation Management	Hale,Michael R	Knowd,Timothy M	47169
01	Mortier,Hal R	04123	2005	Fire Coord	Construction Services	Vegetation Management	Hale,Michael R	Knowd,Timothy M	47169
01	Mortier,Hal R	04123	2006	Fire Coord	Construction Services	Vegetation Management	Hale,Michael R	Knowd,Timothy M	47169
01	Mortier,Hal R	04123	2007	Fire Coord	Construction Services	Vegetation Management	Hale,Michael R	Knowd,Timothy M	47169
01	Mortier,Hal R	04123	2008	Fire Coord	Construction Services	Vegetation Management	Hale,Michael R	Akau,Don	00381
01	Mortier,Hal R	04123	2009	Fire Coord	Construction Services	Vegetation Management	Hale,Michael R	Akau,Don	00381
01	Myott,Sean P	04426	2011	Vegetation Mgmt Contr Admtr	Construction Services	Pole Brushing Program	Woldemariam,Jonathan	Miles,Jim S	58262
01	Myott,Sean P	04426	2012	Vegetation Mgmt Contr Admtr	Construction Services	Pole Brushing Program	Woldemariam,Jonathan	Miles,Jim S	58262
01	Myott,Sean P	04426	2013	Vegetation Mgmt Contr Admtr	Construction Services	Pole Brushing Program	Peterson,Scott N	Webb,Jimmie L	02260
01	Myott,Sean P	04426	2014	Vegetation Mgmt Contr Admtr	Construction Services	Pole Brushing Program	Peterson,Scott N	Webb,Jimmie L	02260
01	Myott,Sean P	04426	2015	Vegetation Mgmt Contr Admtr	Construction Services	Pole Brushing Program	Peterson,Scott N	Webb,Jimmie L	02260
01	Myott,Sean P	04426	2016	Vegetation Mgmt Contr Admtr	Construction Services	Pole Brushing Program	Martinez,Janisse	Webb,Jimmie L	02260
01	Ojeda,Donald Anthony	13926	2009	Sys Supp Analyst	Construction Services	V M P Technical And Cust Supp	Hale,Michael R	Rodgers,Diane	05163
01	Ojeda,Donald Anthony	13926	2010	Sys Supp Analyst	Construction Services	V M P Technical And Cust Supp	Hale,Michael R	Rodgers,Diane	05163
01	Ojeda,Donald Anthony	13926	2011	Busn Sys Analyst - I	Construction Services	V M P Technical And Cust Supp	Woldemariam,Jonathan	Rodgers,Diane	05163
01	Ojeda,Donald Anthony	13926	2011	Sys Supp Analyst	Construction Services	V M P Technical And Cust Supp	Hale,Michael R	Rodgers,Diane	05163
01	Ojeda,Donald Anthony	13926	2012	Busn Sys Analyst - I	Construction Services	V M P Technical And Cust Supp	Peterson,Scott N	Akau,Don	00381
01	Ojeda,Donald Anthony	13926	2012	Busn Sys Analyst - I	Construction Services	V M P Technical And Cust Supp	Woldemariam,Jonathan	Rodgers,Diane	05163
01	Ojeda,Donald Anthony	13926	2013	Busn Sys Analyst - I	Construction Services	V M P Technical And Cust Supp	Peterson,Scott N	Rodgers,Diane	05163
01	Ojeda,Donald Anthony	13926	2014	Busn Sys Analyst - I	Construction Services	V M P Technical And Cust Supp	Peterson,Scott N	Rodgers,Diane	05163
01	Ojeda,Donald Anthony	13926	2015	Busn Sys Analyst - I	Construction Services	V M P Technical And Cust Supp	Peterson,Scott N	Rodgers,Diane	05163
01	Ojeda,Donald Anthony	13926	2015	Busn Sys Analyst - I	Construction Services	V M P Technical And Cust Supp	Shults,Emily C	Rodgers,Diane	05163
01	Ojeda,Donald Anthony	13926	2015	Busn Sys Analyst - I	Construction Services	V M P Technical And Cust Supp	Shults,Emily C	Rodgers,Diane	05163
01	Ojeda,Donald Anthony	13926	2016	Busn Sys Analyst - I	Construction Services	V M P Technical And Cust Supp	Martinez,Janisse	Rodgers,Diane	05163
01	Ojeda,Donald Anthony	13926	2016	Busn Sys Analyst - II	Construction Services	V M P Technical And Cust Supp	Martinez,Janisse	Rodgers,Diane	05163
01	Olmeda,Martin	63642	2003	Vegetation Mgmt Contr Admtr	Construction Services	Vegetation Management	Hale,Michael R	Knowd,Timothy M	47169
01	Olmeda,Martin	63642	2004	Vegetation Mgmt Contr Admtr	Construction Services	Pole Brushing Program	Hale,Michael R	Miles,Jim S	58262
01	Olmeda,Martin	63642	2004	Vegetation Mgmt Contr Admtr	Construction Services	Vegetation Management	Hale,Michael R	Knowd,Timothy M	47169
01	Olmeda,Martin	63642	2005	Vegetation Mgmt Contr Admtr	Construction Services	Pole Brushing Program	Hale,Michael R	Miles,Jim S	58262
01	Olmeda,Martin	63642	2006	Vegetation Mgmt Contr Admtr	Construction Services	Pole Brushing Program	Hale,Michael R	Miles,Jim S	58262
01	Olmeda,Martin	63642	2007	Vegetation Mgmt Contr Admtr	Construction Services	Pole Brushing Program	Martinez,Janisse	Webb,Jimmie L	02260
01	Peck,Gregory Lynn	11992	2008	Area Forester	Construction Services	Forester	Hale,Michael R	Daleo,Michael A	04370
01	Peck,Gregory Lynn	11992	2009	Area Forester	Construction Services	Forester	Hale,Michael R	Daleo,Michael A	04370
01	Peck,Gregory Lynn	11992	2010	Area Forester	Construction Services	Forester	Hale,Michael R	Daleo,Michael A	04370
01	Peck,Gregory Lynn	11992	2011	Area Forester	Construction Services	Forester	Hale,Michael R	Daleo,Michael A	04370
01	Peck,Gregory Lynn	11992	2012	Area Forester	Construction Services	Forester	Woldemariam,Jonathan	Daleo,Michael A	04370

01	Peck, Gregory Lynn	11992	2013	Area Forester	Construction Services	Forester	Peterson, Scott N	Daleo, Michael A	04370
01	Peck, Gregory Lynn	11992	2014	Area Forester	Construction Services	Forester	Peterson, Scott N	Daleo, Michael A	04370
01	Peck, Gregory Lynn	11992	2015	Area Forester	Construction Services	Forester	Peterson, Scott N	Daleo, Michael A	04370
01	Peck, Gregory Lynn	11992	2016	Area Forester	Construction Services	Forester	Martinez, Janisse	Daleo, Michael A	04370
01	Rodgers, Diane	05163	2005	Team Ld - Vegetation Mgmt	Construction Services	V M P Technical And Cust Supp	Hale, Michael R	Rodgers, Diane	05163
01	Rodgers, Diane	05163	2006	Team Ld - Vegetation Mgmt	Construction Services	V M P Technical And Cust Supp	Hale, Michael R	Rodgers, Diane	05163
01	Rodgers, Diane	05163	2007	Team Ld - Vegetation Mgmt	Construction Services	V M P Technical And Cust Supp	Hale, Michael R	Rodgers, Diane	05163
01	Rodgers, Diane	05163	2008	Team Ld - Vegetation Mgmt	Construction Services	V M P Technical And Cust Supp	Hale, Michael R	Rodgers, Diane	05163
01	Rodgers, Diane	05163	2009	Team Ld - Vegetation Mgmt	Construction Services	V M P Technical And Cust Supp	Hale, Michael R	Rodgers, Diane	05163
01	Rodgers, Diane	05163	2010	Team Ld - Vegetation Mgmt	Construction Services	V M P Technical And Cust Supp	Hale, Michael R	Rodgers, Diane	05163
01	Rodgers, Diane	05163	2011	Team Ld - Vegetation Mgmt	Construction Services	V M P Technical And Cust Supp	Hale, Michael R	Rodgers, Diane	05163
01	Rodgers, Diane	05163	2012	Team Ld - Vegetation Mgmt	Construction Services	V M P Technical And Cust Supp	Peterson, Scott N	Akau, Don	00381
01	Rodgers, Diane	05163	2012	Team Ld - Vegetation Mgmt	Construction Services	V M P Technical And Cust Supp	Peterson, Scott N	Rodgers, Diane	05163
01	Rodgers, Diane	05163	2012	Team Ld - Vegetation Mgmt	Construction Services	V M P Technical And Cust Supp	Woldemariam, Jonathan	Rodgers, Diane	05163
01	Rodgers, Diane	05163	2012	Team Ld - Vegetation Mgmt	Construction Services	V M P Technical And Cust Supp	Peterson, Scott N	Akau, Don	00381
01	Rodgers, Diane	05163	2013	Team Ld - Vegetation Mgmt	Construction Services	V M P Technical And Cust Supp	Peterson, Scott N	Rodgers, Diane	05163
01	Rodgers, Diane	05163	2014	Team Ld - Vegetation Mgmt	Construction Services	V M P Technical And Cust Supp	Peterson, Scott N	Rodgers, Diane	05163
01	Rodgers, Diane	05163	2015	Team Ld - Vegetation Mgmt	Construction Services	V M P Technical And Cust Supp	Peterson, Scott N	Rodgers, Diane	05163
01	Rodgers, Diane	05163	2016	Team Ld - Vegetation Mgmt	Construction Services	V M P Technical And Cust Supp	Martinez, Janisse	Rodgers, Diane	05163
01	Shreve, Acree W	18851	2011	Vegetation Mgmt Contr Admtr	Construction Services	Pole Brushing Program	Woldemariam, Jonathan	Miles, Jim S	58262
01	Shreve, Acree W	18851	2012	Vegetation Mgmt Contr Admtr	Construction Services	Pole Brushing Program	Woldemariam, Jonathan	Miles, Jim S	58262
01	Shreve, Acree W	18851	2013	Vegetation Mgmt Contr Admtr	Construction Services	Pole Brushing Program	Peterson, Scott N	Webb, Jimmie L	02260
01	Shreve, Acree W	18851	2014	Vegetation Mgmt Contr Admtr	Construction Services	Pole Brushing Program	Peterson, Scott N	Webb, Jimmie L	02260
01	Shreve, Acree W	18851	2015	Vegetation Mgmt Contr Admtr	Construction Services	Pole Brushing Program	Peterson, Scott N	Webb, Jimmie L	02260
01	Shreve, Acree W	18851	2016	Vegetation Mgmt Contr Admtr	Construction Services	Pole Brushing Program	Martinez, Janisse	Webb, Jimmie L	02260
01	Taylor, Bruce R	02016	2003	AREA FORESTER	Construction Services	Forester	Hale, Michael R	Akau, Don	00381
01	Taylor, Bruce R	02016	2003	AREA FORESTER	Construction Services	Vegetation Management	Hale, Michael R	Knowd, Timothy M	47169
01	Taylor, Bruce R	02016	2004	AREA FORESTER	Construction Services	Forester	Hale, Michael R	Akau, Don	00381
01	Taylor, Bruce R	02016	2004	AREA FORESTER	Construction Services	Forester	Hale, Michael R	Akau, Don	00381
01	Taylor, Bruce R	02016	2005	AREA FORESTER	Construction Services	Forester	Hale, Michael R	Akau, Don	00381
01	Taylor, Bruce R	02016	2006	Area Forester	Construction Services	Forester	Hale, Michael R	Akau, Don	00381
01	Taylor, Bruce R	02016	2007	Area Forester	Construction Services	Forester	Hale, Michael R	Akau, Don	00381
01	Taylor, Bruce R	02016	2008	Area Forester	Construction Services	Forester	Hale, Michael R	Daleo, Michael A	04370
01	Taylor, Nicole M	13919	2016	Busn Sys Analyst - II	Construction Services	V M P Technical And Cust Supp	Martinez, Janisse	Rodgers, Diane	05163
01	Thomas, Jacqueline Kennedy	45588	2006	Staff Asst	Construction Services	V M P Technical And Cust Supp	Hale, Michael R	Rodgers, Diane	05163
01	Thomas, Jacqueline Kennedy	45588	2007	Staff Asst	Construction Services	V M P Technical And Cust Supp	Hale, Michael R	Rodgers, Diane	05163
01	Thompson, Chris	05337	2006	Area Forester	Construction Services	Forester	Hale, Michael R	Akau, Don	00381
01	Thompson, Chris	05337	2007	Area Forester	Construction Services	Forester	Hale, Michael R	Akau, Don	00381
01	Thompson, Chris	05337	2008	Area Forester	Construction Services	Forester	Hale, Michael R	Daleo, Michael A	04370
01	Thompson, Chris	05337	2009	Area Forester	Construction Services	Forester	Hale, Michael R	Daleo, Michael A	04370
01	Thompson, Chris	05337	2010	Area Forester	Construction Services	Forester	Hale, Michael R	Daleo, Michael A	04370
01	Thompson, Chris	05337	2011	Area Forester	Construction Services	Forester	Hale, Michael R	Daleo, Michael A	04370
01	Thompson, Chris	05337	2012	Area Forester	Construction Services	Forester	Woldemariam, Jonathan	Daleo, Michael A	04370
01	Thompson, Chris	05337	2013	Area Forester	Construction Services	Forester	Peterson, Scott N	Daleo, Michael A	04370
01	Thompson, Chris	05337	2014	Area Forester	Construction Services	Forester	Peterson, Scott N	Daleo, Michael A	04370
01	Thompson, Chris	05337	2015	Area Forester	Construction Services	Forester	Peterson, Scott N	Daleo, Michael A	04370
01	Thompson, Chris	05337	2016	Area Forester	Construction Services	Forester	Martinez, Janisse	Daleo, Michael A	04370

01	V'Soske,Donald E	00086	2003	Sys Supp Analyst	Construction Services	Vegetation Management	Hale,Michael R	Knowd,Timothy M	47169
01	V'Soske,Donald E	00086	2004	Sys Supp Analyst	Construction Services	V M P Technical And Cust Supp	Hale,Michael R	Gurney,Stephen S	34231
01	V'Soske,Donald E	00086	2004	Sys Supp Analyst	Construction Services	V M P Technical And Cust Supp	Hale,Michael R	Gurney,Stephen S	34231
01	V'Soske,Donald E	00086	2004	Sys Supp Analyst	Construction Services	Vegetation Management	Hale,Michael R	Knowd,Timothy M	47169
01	V'Soske,Donald E	00086	2005	Sys Supp Analyst	Construction Services	V M P Technical And Cust Supp	Hale,Michael R	Gurney,Stephen S	34231
01	V'Soske,Donald E	00086	2006	Sys Supp Analyst	Construction Services	V M P Technical And Cust Supp	Hale,Michael R	Rodgers,Diane	05163
01	V'Soske,Donald E	00086	2007	Sys Supp Spec	Construction Services	V M P Technical And Cust Supp	Martinez,Janisse	Rodgers,Diane	05163
01	Valders,Kathy Ann	09447	2007	Staff Asst	Construction Services	V M P Technical And Cust Supp	Hale,Michael R	Rodgers,Diane	05163
01	Valders,Kathy Ann	09447	2008	Staff Asst	Construction Services	V M P Technical And Cust Supp	Hale,Michael R	Rodgers,Diane	05163
01	Valders,Kathy Ann	09447	2009	Staff Asst	Construction Services	V M P Technical And Cust Supp	Hale,Michael R	Rodgers,Diane	05163
01	Valders,Kathy Ann	09447	2010	Staff Asst	Construction Services	V M P Technical And Cust Supp	Hale,Michael R	Rodgers,Diane	05163
01	Valders,Kathy Ann	09447	2011	Staff Asst	Construction Services	V M P Technical And Cust Supp	Hale,Michael R	Rodgers,Diane	05163
01	Valders,Kathy Ann	09447	2011	Staff Asst	Construction Services	V M P Technical And Cust Supp	Woldemariam,Jonathan	Rodgers,Diane	05163
01	Valders,Kathy Ann	09447	2012	Staff Asst	Construction Services	V M P Technical And Cust Supp	Woldemariam,Jonathan	Rodgers,Diane	05163
01	Valders,Kathy Ann	09447	2013	Staff Asst	Construction Services	V M P Technical And Cust Supp	Peterson,Scott N	Rodgers,Diane	05163
01	Valders,Kathy Ann	09447	2013	Staff Asst	Construction Services	V M P Technical And Cust Supp	Peterson,Scott N	Rodgers,Diane	05163
01	Valders,Kathy Ann	09447	2014	Staff Asst	Construction Services	V M P Technical And Cust Supp	Peterson,Scott N	Rodgers,Diane	05163
01	Valders,Kathy Ann	09447	2014	Staff Asst	Construction Services	V M P Technical And Cust Supp	Peterson,Scott N	Rodgers,Diane	05163
01	Valders,Kathy Ann	09447	2014	Staff Asst	Construction Services	V M P Technical And Cust Supp	Peterson,Scott N	Rodgers,Diane	05163
01	Valders,Kathy Ann	09447	2015	Staff Asst	Construction Services	V M P Technical And Cust Supp	Peterson,Scott N	Rodgers,Diane	05163
01	Valders,Kathy Ann	09447	2015	Staff Asst	Construction Services	V M P Technical And Cust Supp	Sowers,John A	Rodgers,Diane	05163
01	Valders,Kathy Ann	09447	2015	Staff Asst	Construction Services	V M P Technical And Cust Supp	Peterson,Scott N	Rodgers,Diane	05163
01	Valders,Kathy Ann	09447	2015	Staff Asst	Construction Services	V M P Technical And Cust Supp	Shults,Emily C	Rodgers,Diane	05163
01	Valders,Kathy Ann	09447	2015	Staff Asst	Construction Services	V M P Technical And Cust Supp	Sowers,John A	Rodgers,Diane	05163
01	Valders,Kathy Ann	09447	2015	Staff Asst	Construction Services	V M P Technical And Cust Supp	Martinez,Janisse	Rodgers,Diane	05163
01	Vande Krol,Angela D	02280	2003	Staff Asst	Construction Services	Vegetation Management	Hale,Michael R	Knowd,Timothy M	47169
01	Vande Krol,Angela D	02280	2003	Staff Asst	Construction Services	Vegetation Management	Martinez,Janisse	Akau,Don	00381
01	Webb,Jimmie L	02260	2003	AREA FORESTER	Construction Services	Forester	Hale,Michael R	Akau,Don	00381
01	Webb,Jimmie L	02260	2003	AREA FORESTER	Construction Services	Vegetation Management	Hale,Michael R	Knowd,Timothy M	47169
01	Webb,Jimmie L	02260	2004	AREA FORESTER	Construction Services	Forester	Hale,Michael R	Akau,Don	00381
01	Webb,Jimmie L	02260	2004	AREA FORESTER	Construction Services	Vegetation Management	Hale,Michael R	Knowd,Timothy M	47169
01	Webb,Jimmie L	02260	2005	AREA FORESTER	Construction Services	Vegetation Management	Hale,Michael R	Knowd,Timothy M	47169
01	Webb,Jimmie L	02260	2006	Area Forester	Construction Services	Vegetation Management	Hale,Michael R	Knowd,Timothy M	47169
01	Webb,Jimmie L	02260	2007	Area Forester	Construction Services	Vegetation Management	Hale,Michael R	Knowd,Timothy M	47169
01	Webb,Jimmie L	02260	2008	Area Forester	Construction Services	Vegetation Management	Hale,Michael R	Akau,Don	00381
01	Webb,Jimmie L	02260	2009	Area Forester	Construction Services	Vegetation Management	Hale,Michael R	Akau,Don	00381
01	Webb,Jimmie L	02260	2010	Area Forester	Construction Services	Vegetation Management	Hale,Michael R	Akau,Don	00381
01	Webb,Jimmie L	02260	2011	Area Forester	Construction Services	Vegetation Management	Hale,Michael R	Akau,Don	00381
01	Webb,Jimmie L	02260	2012	Area Forester	Construction Services	Vegetation Management	Woldemariam,Jonathan	Akau,Don	00381
01	Webb,Jimmie L	02260	2013	Team Ldr - IV	Construction Services	Pole Brushing Program	Peterson,Scott N	Webb,Jimmie L	02260
01	Webb,Jimmie L	02260	2014	Team Ldr - IV	Construction Services	Pole Brushing Program	Peterson,Scott N	Webb,Jimmie L	02260
01	Webb,Jimmie L	02260	2014	Team Ldr - IV	Construction Services	Pole Brushing Program	Peterson,Scott N	Webb,Jimmie L	02260
01	Webb,Jimmie L	02260	2015	Team Ldr - IV	Construction Services	Pole Brushing Program	Peterson,Scott N	Webb,Jimmie L	02260
01	Webb,Jimmie L	02260	2016	Team Ldr - IV	Construction Services	Pole Brushing Program	Martinez,Janisse	Webb,Jimmie L	02260
01	White,Ryan D	18906	2012	Vegetation Mgmt Contr Admtr	Construction Services	Pole Brushing Program	Peterson,Scott N	Miles,Jim S	58262
01	White,Ryan D	18906	2013	Vegetation Mgmt Contr Admtr	Construction Services	Pole Brushing Program	Peterson,Scott N	Webb,Jimmie L	02260
01	White,Ryan D	18906	2014	Vegetation Mgmt Contr Admtr	Construction Services	Pole Brushing Program	Peterson,Scott N	Webb,Jimmie L	02260

01	White,Ryan D	18906	2015	Vegetation Mgmt Contr Admtr	Construction Services	Pole Brushing Program	Peterson,Scott N	Webb,Jimmie L	02260
01	White,Ryan D	18906	2016	Vegetation Mgmt Contr Admtr	Construction Services	Pole Brushing Program	Martinez,Janisse	Webb,Jimmie L	02260
01	White,Timothy Scott	99595	2008	Vegetation Mgmt Contr Admtr	Construction Services	Pole Brushing Program	Hale,Michael R	Miles,Jim S	58262
01	White,Timothy Scott	99595	2009	Vegetation Mgmt Contr Admtr	Construction Services	Pole Brushing Program	Hale,Michael R	Miles,Jim S	58262
01	White,Timothy Scott	99595	2010	Vegetation Mgmt Contr Admtr	Construction Services	Pole Brushing Program	Hale,Michael R	Miles,Jim S	58262
01	White,Timothy Scott	99595	2010	Vegetation Mgmt Contr Admtr	Construction Services	Pole Brushing Program	Hale,Michael R	Miles,Jim S	58262
01	White,Timothy Scott	99595	2011	Vegetation Mgmt Contr Admtr	Construction Services	Pole Brushing Program	Hale,Michael R	Miles,Jim S	58262
01	White,Timothy Scott	99595	2011	Vegetation Mgmt Contr Admtr	Construction Services	Pole Brushing Program	Woldemariam,Jonathan	Miles,Jim S	58262
01	White,Timothy Scott	99595	2011	Vegetation Mgmt Contr Admtr	Construction Services	Pole Brushing Program	Hale,Michael R	Miles,Jim S	58262
01	White,Timothy Scott	99595	2011	Vegetation Mgmt Contr Admtr	Construction Services	Pole Brushing Program	Woldemariam,Jonathan	Miles,Jim S	58262
01	White,Timothy Scott	99595	2011	Vegetation Mgmt Contr Admtr	Construction Services	Pole Brushing Program	Martinez,Janisse	Webb,Jimmie L	02260
01	Williamson,Jamie R	77585	2015	Staff Asst	Construction Services	V M P Technical And Cust Supp	Peterson,Scott N	Rodgers,Diane	05163
01	Williamson,Jamie R	77585	2016	Staff Asst	Construction Services	V M P Technical And Cust Supp	Martinez,Janisse	Rodgers,Diane	05163
01	Zocco Jr,Robin C	02923	2004	AREA FORESTER	Construction Services	Forester	Hale,Michael R	Akau,Don	00381
01	Zocco Jr,Robin C	02923	2004	AREA FORESTER	Construction Services	Forester	Hale,Michael R	Akau,Don	00381
01	Zocco Jr,Robin C	02923	2004	AREA FORESTER	Construction Services	Vegetation Management	Hale,Michael R	Knowd,Timothy M	47169
01	Zocco Jr,Robin C	02923	2005	AREA FORESTER	Construction Services	Forester	Hale,Michael R	Akau,Don	00381
01	Zocco Jr,Robin C	02923	2006	Area Forester	Construction Services	Forester	Hale,Michael R	Akau,Don	00381
01	Zocco Jr,Robin C	02923	2007	Area Forester	Construction Services	Forester	Hale,Michael R	Akau,Don	00381
01	Zocco Jr,Robin C	02923	2008	Area Forester	Construction Services	Forester	Hale,Michael R	Daleo,Michael A	04370
01	Zocco Jr,Robin C	02923	2009	Area Forester	Construction Services	Forester	Hale,Michael R	Daleo,Michael A	04370
01	Zocco Jr,Robin C	02923	2010	Area Forester	Construction Services	Forester	Hale,Michael R	Daleo,Michael A	04370
01	Zocco Jr,Robin C	02923	2011	Area Forester	Construction Services	Forester	Hale,Michael R	Daleo,Michael A	04370
01	Zocco Jr,Robin C	02923	2012	Area Forester	Construction Services	Forester	Woldemariam,Jonathan	Daleo,Michael A	04370
01	Zocco Jr,Robin C	02923	2013	Area Forester	Construction Services	Forester	Peterson,Scott N	Daleo,Michael A	04370
01	Zocco Jr,Robin C	02923	2014	Area Forester	Construction Services	Forester	Peterson,Scott N	Daleo,Michael A	04370
01	Zocco Jr,Robin C	02923	2015	Area Forester	Construction Services	Forester	Peterson,Scott N	Daleo,Michael A	04370
01	Zocco Jr,Robin C	02923	2015	Area Forester	Construction Services	Forester	Sowers,John A	Daleo,Michael A	04370
01	Zocco Jr,Robin C	02923	2015	Area Forester	Construction Services	Forester	Shults,Emily C	Daleo,Michael A	04370
01	Zocco Jr,Robin C	02923	2016	Area Forester	Construction Services	Forester	Martinez,Janisse	Daleo,Michael A	04370

2016 Vegetation Management Organizational Hierarchy (as of August 2016)



Contract employee name (temporary): Selina Arreolo

Job title: Vegetation Mgmt Contr Admtr

Reporting to: Diane Rogers

(*Contract employees are not captured in the employee hierarchy)

Attachment: Vegetation Management Sourcing Overview

Project Title: SDG&E Vegetation Management's Tree Pruning Services

Awarded Vendor(s): Davey Tree Surgery – Tree Pruning North
Asplundh Tree Expert Tree Pruning South

Document: Sourcing Overview

Term: September 1, 2005 – September 30, 2010
Three (3)Year Contract with Two (1) Year Options to Extend

Sourcing Overview

Reviewers:

- Alan Marcher, Portfolio Manager
- Abby Snyder, Attorney
- Pat Canney, Environmental
- Ron Miller, Environmental
- Brain Heramb, Safety

Sourcing Team:

Vegetation Management:

- Tim Knowd, Vegetation Management Program Manager
- Don Akau, System Forester
- Jim Miles, Team Leader

Supply Management:

- Maria Bastian, Contracting Agent

Perfect Commerce:

- Sam Litzler

Goal:

Reduce tree pruning costs by making substantial changes to the tree pruning schedule and award process, opening the contracts to the market (driving competition), awarding longer term contracts, eliminating SDG&E pass through cost escalations and allowing contractors to share in their overhead costs for similar activities.

The sourcing team's objective was to reduce costs, increase contractor accountability and professionalism and to maintain a high level of compliance with vegetation management clearance requirements. The team sought to award the business to a Contractor who could provide the lowest total cost with the desired levels of quality, service, safety, professionalism and overall performance in line with today's market.

Background:

Vegetation Management's Tree Pruning contracts have been held by Davey Tree Surgery and Asplundh Tree Expert for the last 30 years. Most recently the market was penetrated by a third competitor Provco who was unable to sustain their tree pruning operations but were able to maintain a presence in the pole brushing market.

Sourcing Process:

A Request for Information (RFI) was solicited from 35 suppliers for both the Tree Pruning and Pole Brushing Services. The contractors were screened based on the experience within the industry, the size of their company, their safety plan and overall years of doing business. Six qualified suppliers were sent a Request for Proposal through the Perfect Commerce RFX Event. Four contractors submitted a response including: Davey Tree Surgery, Nelson Tree, Asplundh Tree Experts and Provco with a variation in the pricing solutions solicited. The variations included: 1). Tree Pruning services for the North or South, 2). Tree Pruning services with or without Pole Brushing Services and 3). Pole Brushing services for all of the territory.

The team sought to leverage the RFP process as an opportunity to acquire direct market research. Suggestions were solicited from the bidders on performance incentives/metrics and best practices in the vegetation management industry. The team learned that a strong tree removal program, a "team" base approach, increased supplier accountability and score carding would drive efficiencies in the overall program. Additionally, SDGE requested full disclosure of the cost drivers for each type of labor rate specified in the RFP. These cost drivers included: labor, capital equipment, overhead, insurance, benefits and profit.

Competitive awards were based on a number of criteria as depicted in the Table 1.2 below including experience, service, costs and bidder's overall technical proposal. Critical factors in the team's award determination were experience with California regulations and SDG&E and costs (including price, switching costs, and the cost to maintain competition).

The contract for Tree Pruning services in the North was awarded to Davey Tree Surgery due to their strong competencies in the services required, overall skills sets of existing personnel on SDGE projects and competitive rates submitted. The contract for Tree Pruning services in the South was awarded to Asplundh whose strengths include: experienced personnel, competitive and creative pricing and extensive experience providing vegetation management services to SDG&E.

The three (3) criteria in which participating suppliers were evaluated included the following:

Table 1.2 Evaluation Criteria

Costs	Company Background	Services Provided/Capabilities
Price/ T & E Rates	Organization Structure	Management
Proposed Cost Savings	Financial Viability	Training/Hiring Protocols
Creative Pricing	Risk Mitigation	Quality Assurance
Not to exceed proposal	Exceptions to T's and C's	Safety
Payment Discounts	Experience	Customer Refusal/Professionalism
Fuel Costs		