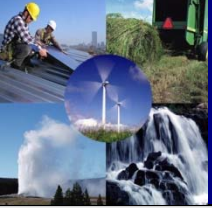


SDGE[®]

A  Sempra Energy[®] utility

Share the Sun Site Alternatives

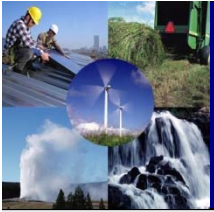
February 12, 2013



Site Alternatives

- Rooftop ~third party lease
- Land based~ developer owned or leased
- SDG&E controlled property

SDG&E seeks workshop input: Are workshop participants interested in SDG&E providing property?



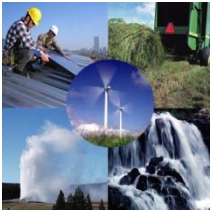
SDG&E Property Challenges & Opportunities



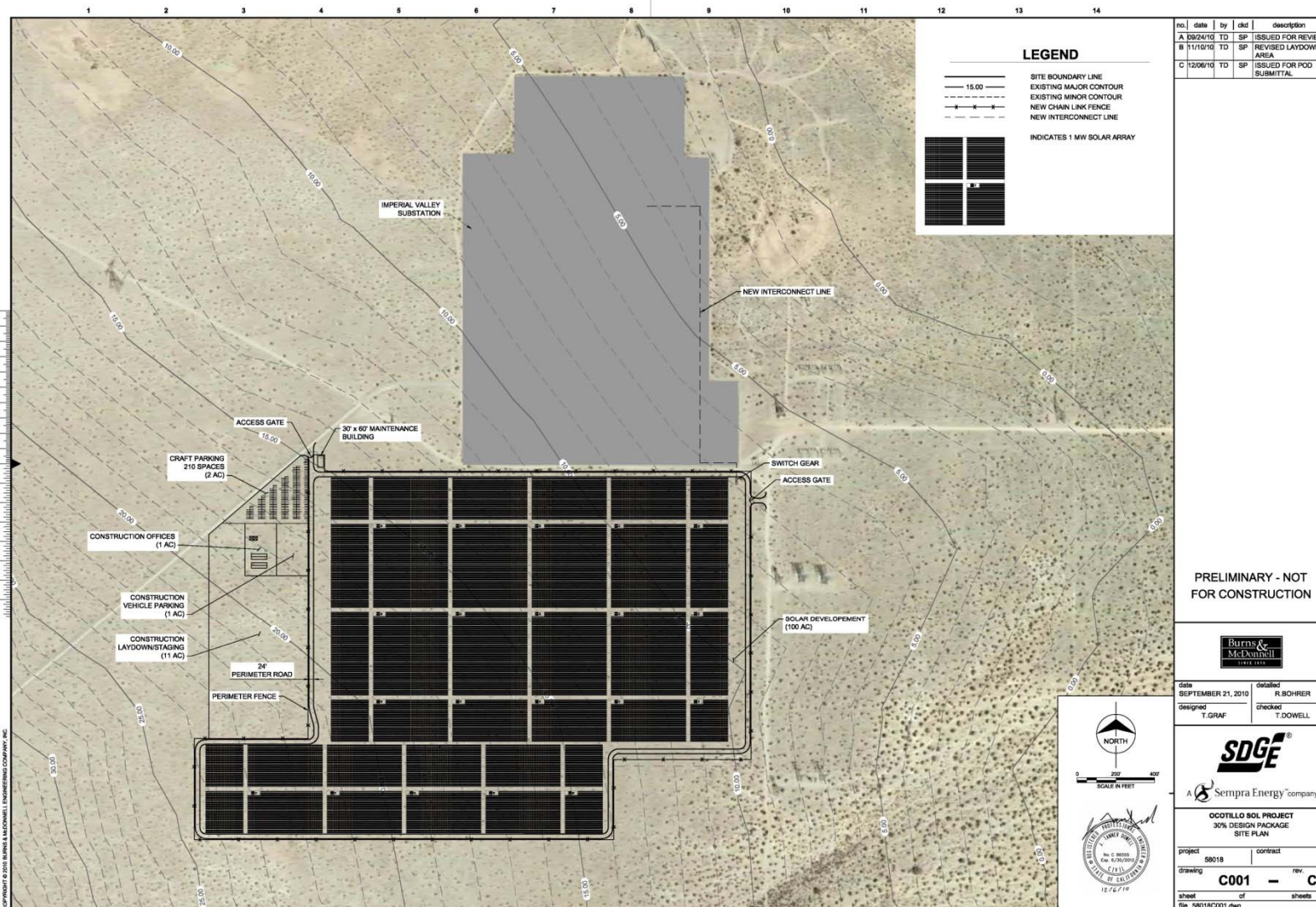
- T&D ROWs
 - No permanent structures permitted
 - Easement limitations

- Substations & other
 - All properties screened
 - Future substation expansions vetted
 - CEQA / CPUC 851~ a 2 year process

- Ocotillo Sol
 - 100 acres Imperial Valley
 - Tied to transmission, delivers to SDG&E via SDG&E transmission
 - Final use to be determined



16 to 20 MWac ~ 100 Acres



no.	date	by	old	description
A	08/24/10	TD	SP	ISSUED FOR REVIEW
B	11/10/10	TD	SP	REVISED LAYDOWN AREA
C	12/06/10	TD	SP	ISSUED FOR POD SUBMITTAL

PRELIMINARY - NOT FOR CONSTRUCTION

Burns & McDonnell
INCORPORATED

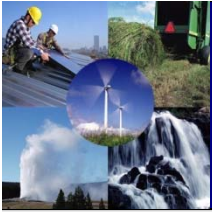
DATE: SEPTEMBER 21, 2010 DESIGNED BY: R. BOHRER
 DESIGNED BY: T. GRAF CHECKED BY: T. DOWELL

SDGE
A Sempra Energy company

OCOTILLO SOL PROJECT
30% DESIGN PACKAGE
SITE PLAN

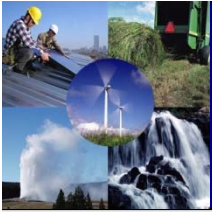
PROJECT: 58018 CONTRACT: _____
 DRAWING: **C001** REV: **C**
 SHEET: _____ OF _____ SHEETS
 FILE: 58018C001.dwg

© 2010 BURNS & MCDONNELL ENGINEERING COMPANY, INC.
 H:\ENERGY DIV\BONS\58018 - OCOTILLO SOL\CAD\DRAWING\GEN\18018C001.DWG 12 OF 2010 11:55am RBOHRER



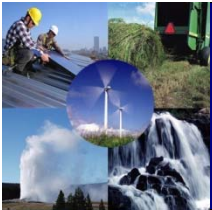
Development Status

- **Permitting**
 - DEIS issued June 2012
 - FEIS expected June 2013
 - Record of Decision expected August 2013
- **Interconnection**
 - Studies completed
 - Interconnection agreement awaiting execution



Preliminary Cost ~ Will Change

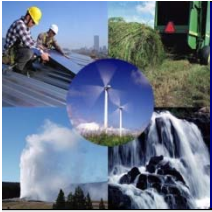
- Land & Mitigation
 - Based on DEIS & other recent leases
 - Includes: annual lease, property tax, environmental mitigation (pre-COD & on-going)
 - \$11,000/acre-yr
- Interconnection Facilities
 - Studies completed, energy only
 - In-service dates being updated
 - “Gen-tie” & switchgear owned by SDG&E
 - Bays/buses for PV owners
 - \$8 to \$13/kW-yr
- Decommissioning Sinking Fund
 - tbd



Share the Sun: FiT Application Process With SDG&E Land



- Program Participation Request (“PPR”): form to be completed by Respondent seeking a queue number
 - Will be available on SDG&E’s FiT Program website
 - Must be submitted along with Bid Fee (\$2/kW), and all required supporting documentation for the project to be considered for program eligibility
 - **Developers interested in using SDG&E land must check a box and verify additional eligibility requirements**



Share the Sun: FiT Application Process With SDG&E Land cont'd



- Timing

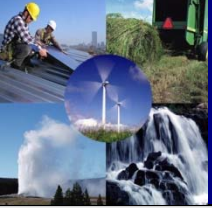
- Queue positions will be based on date and time of PPR submittal
- Within 20 business days of PPR submittal, SDG&E will notify Respondent of its determination
 - Eligible:
 - Respondents **not using SDG&E land** will receive a queue number.
 - **Respondents using SDG&E land will receive a queue number upon returning an executed land agreement**
 - Incomplete: Respondent will be allowed a one-time 10 business day extension to correct minor mistakes or clarify project details
 - The original PPR must show that the project meets the eligibility requirements, material problems with project eligibility will preclude an extension and the project will be deemed ineligible
 - Ineligible: Respondent did not meet eligibility requirements and is not eligible to participate in the program
 - Respondent may remedy eligibility issues and reapply, if so, the date and time of submittal of the new PPR will be used to assign Respondent's queue number if the project is deemed eligible



Share the Sun: Additional Eligibility Requirements for Use of SDG&E Land



- SDG&E is considering the following additional requirements for projects using SDG&E land
 - Commitment to use the land for 20 years
 - bid fee increases from \$2/Kw to \$4/Kw
 - Online date within 12 months of PPA execution



Questions

- Is Ocotillo Sol parceling of interest to Developers at the indicative pricing?