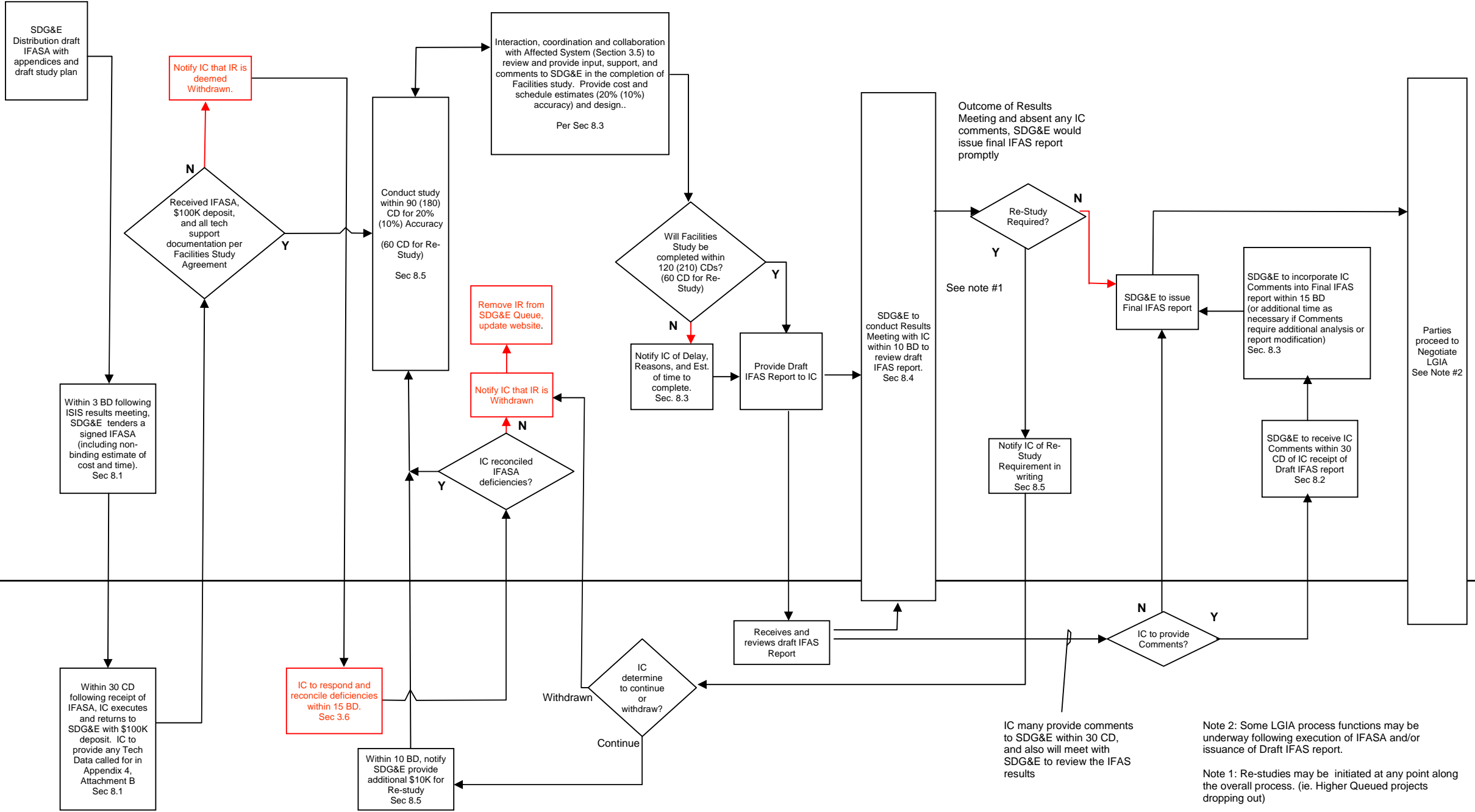


# SDG&E Wholesale Distribution Access Tariff Generation Interconnection Facilities Study Process (LGIP)

San Diego Gas & Electric

Interconnection Customer



IC many provide comments to SDG&E within 30 CD, and also will meet with SDG&E to review the IFAS results

Note 2: Some LGIA process functions may be underway following execution of IFASA and/or issuance of Draft IFAS report.

Note 1: Re-studies may be initiated at any point along the overall process. (ie. Higher Queued projects dropping out)