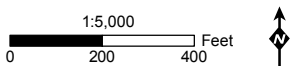




Attachment 4.9-B: National Wetlands Inventory Map 1 of 20

Pipeline Safety & Reliability Project

- Milepost
- Bore Pit
- Horizontal Directional Drill Workspace
- National Wetland Inventory Wetland
- Proposed Project Route
- Aboveground Facility
- Laydown Area
- Proposed Trenchless Construction
- Existing Facility
- City/County Boundary
- Cross-Tie Connector Line
- Workspace



MXD:\PEA\Hydro\NWI\_Detailed.mxd 08/24/15

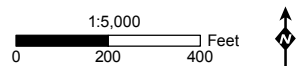




Attachment 4.9-B: National Wetlands Inventory Map 2 of 20

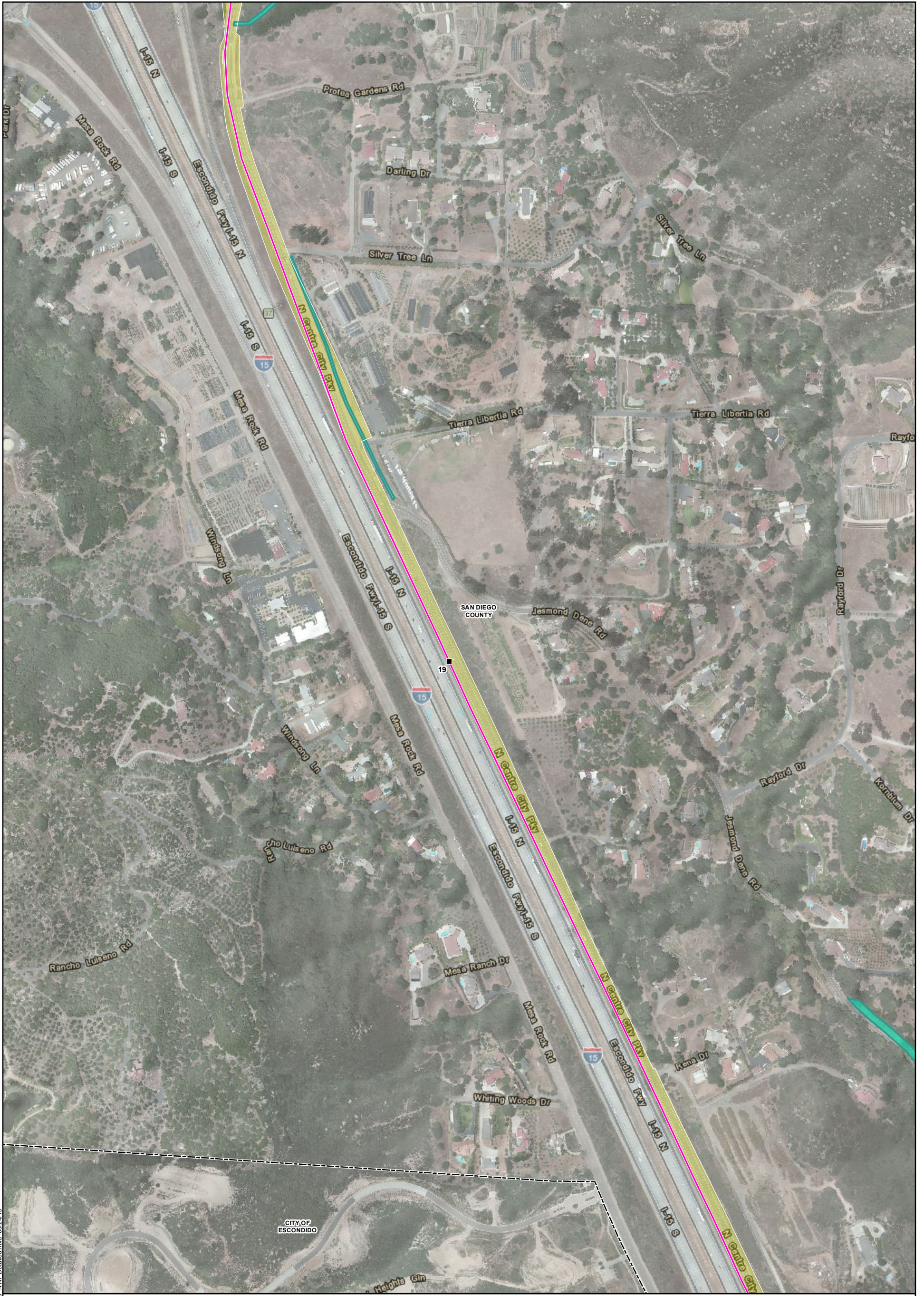
Pipeline Safety & Reliability Project

- |                                      |                        |  |                                      |
|--------------------------------------|------------------------|--|--------------------------------------|
| ■ Milepost                           | ■ Bore Pit             | □ Horizontal Directional Drill Workspace | ■ National Wetland Inventory Wetland |
| — Proposed Project Route             | □ Aboveground Facility | □ Laydown Area                           |                                      |
| --- Proposed Trenchless Construction | □ Existing Facility    | □ City/County Boundary                   |                                      |
| — Cross-Tie Connector Line           |                        | □ Workspace                              |                                      |



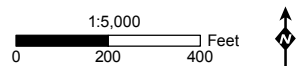
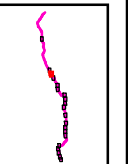
MXD:\PEA\Hydro\INFD\_NWI\_Detailed.mxd 08/24/15





Attachment 4.9-B: National Wetlands Inventory Map 3 of 20

- Milepost
- Bore Pit
- Horizontal Directional Drill Workspace
- National Wetland Inventory Wetland
- Proposed Project Route
- Aboveground Facility
- Laydown Area
- Proposed Trenchless Construction
- Existing Facility
- City/County Boundary
- Cross-Tie Connector Line
- Workspace



MXD:\PEA\Hydro\NWI\_Detailed.mxd 08/24/15

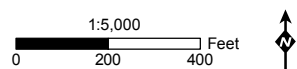
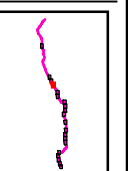




Attachment 4.9-B: National Wetlands Inventory Map 4 of 20

Pipeline Safety & Reliability Project

- Milepost
- Bore Pit
- Horizontal Directional Drill Workspace
- National Wetland Inventory Wetland
- Proposed Project Route
- Aboveground Facility
- Laydown Area
- Proposed Trenchless Construction
- Existing Facility
- City/County Boundary
- Cross-Tie Connector Line
- Workspace



MXD:\PEA\Hydro\INFD\_NWI\_Detailed.mxd 08/24/15

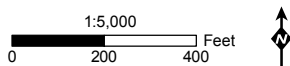
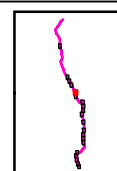




Attachment 4.9-B: National Wetlands Inventory Map 5 of 20

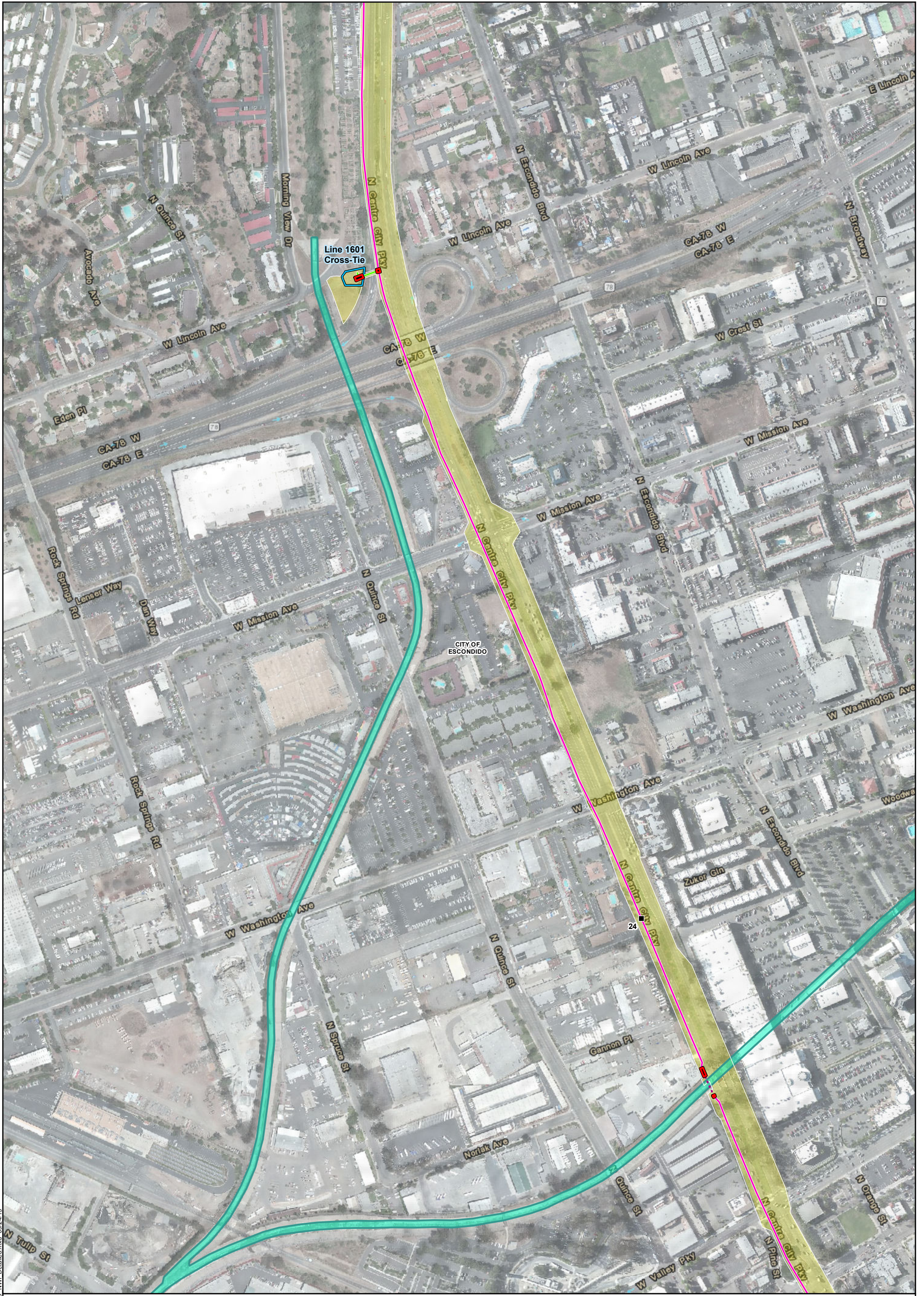
Pipeline Safety & Reliability Project

- Milepost
- Bore Pit
- Horizontal Directional Drill Workspace
- National Wetland Inventory Wetland
- Proposed Project Route
- Aboveground Facility
- Laydown Area
- Proposed Trenchless Construction
- Existing Facility
- City/County Boundary
- Cross-Tie Connector Line
- Workspace



MXD:\PEA\Hydro\NWI\_Detailed.mxd 08/24/15

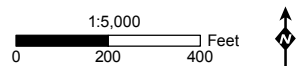
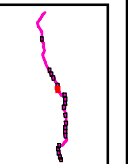




Attachment 4.9-B: National Wetlands Inventory Map 6 of 20

Pipeline Safety & Reliability Project

- Milepost
- Bore Pit
- Horizontal Directional Drill Workspace
- National Wetland Inventory Wetland
- Proposed Project Route
- Aboveground Facility
- Laydown Area
- Proposed Trenchless Construction
- Existing Facility
- City/County Boundary
- Cross-Tie Connector Line
- Workspace



MXD:\PEA\Hydro\NWI\_Detailed.mxd 08/24/15

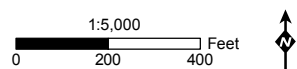
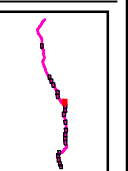




Attachment 4.9-B: National Wetlands Inventory Map 7 of 20

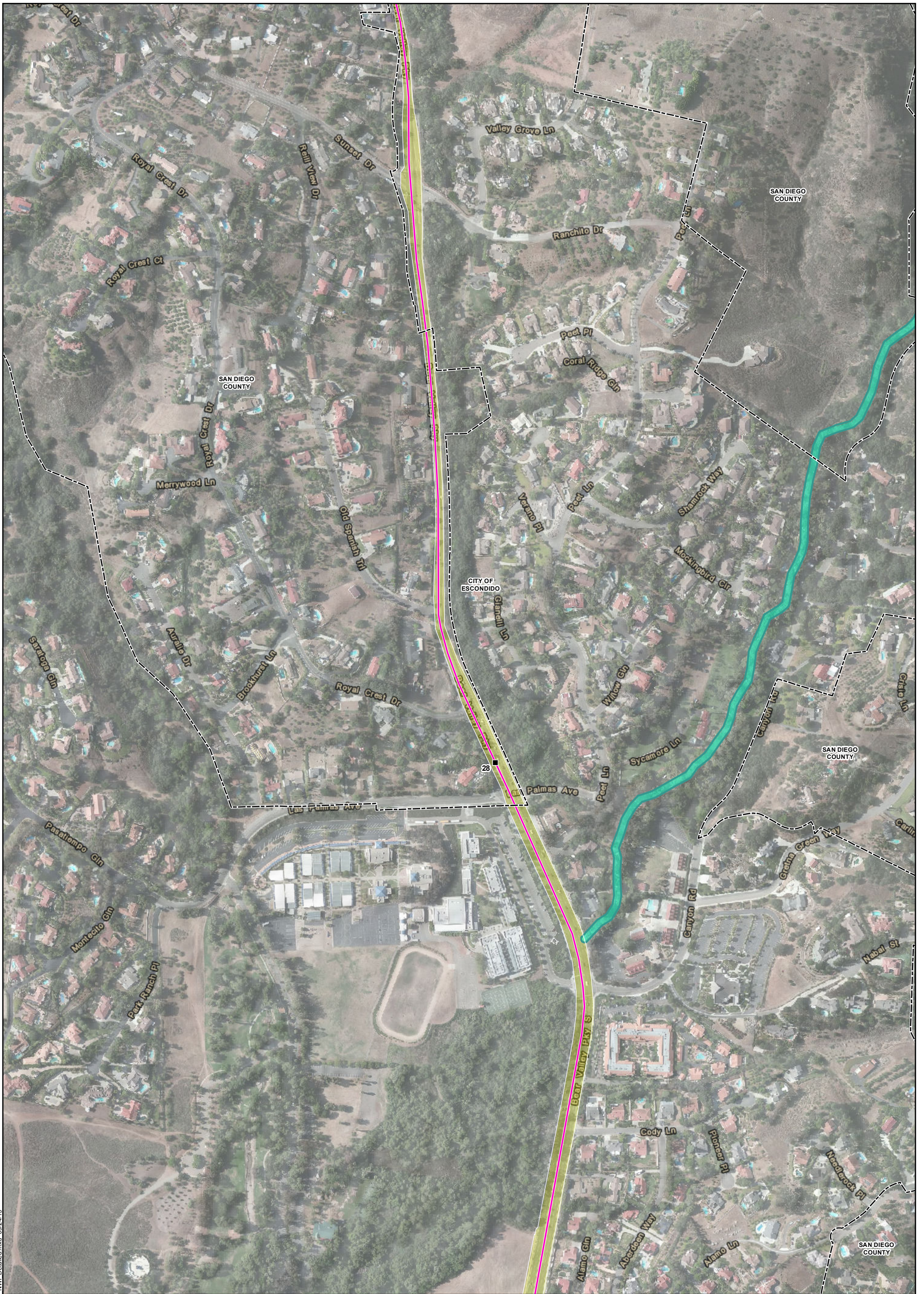
Pipeline Safety & Reliability Project

- Milepost
- Bore Pit
- Horizontal Directional Drill Workspace
- National Wetland Inventory Wetland
- Proposed Project Route
- Aboveground Facility
- Laydown Area
- Proposed Trenchless Construction
- Existing Facility
- City/County Boundary
- Cross-Tie Connector Line
- Workspace



MXD:\PEA\Hydro\NWI\_Detailed.mxd 08/24/15

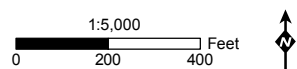
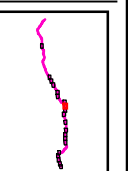




Attachment 4.9-B: National Wetlands Inventory Map 8 of 20

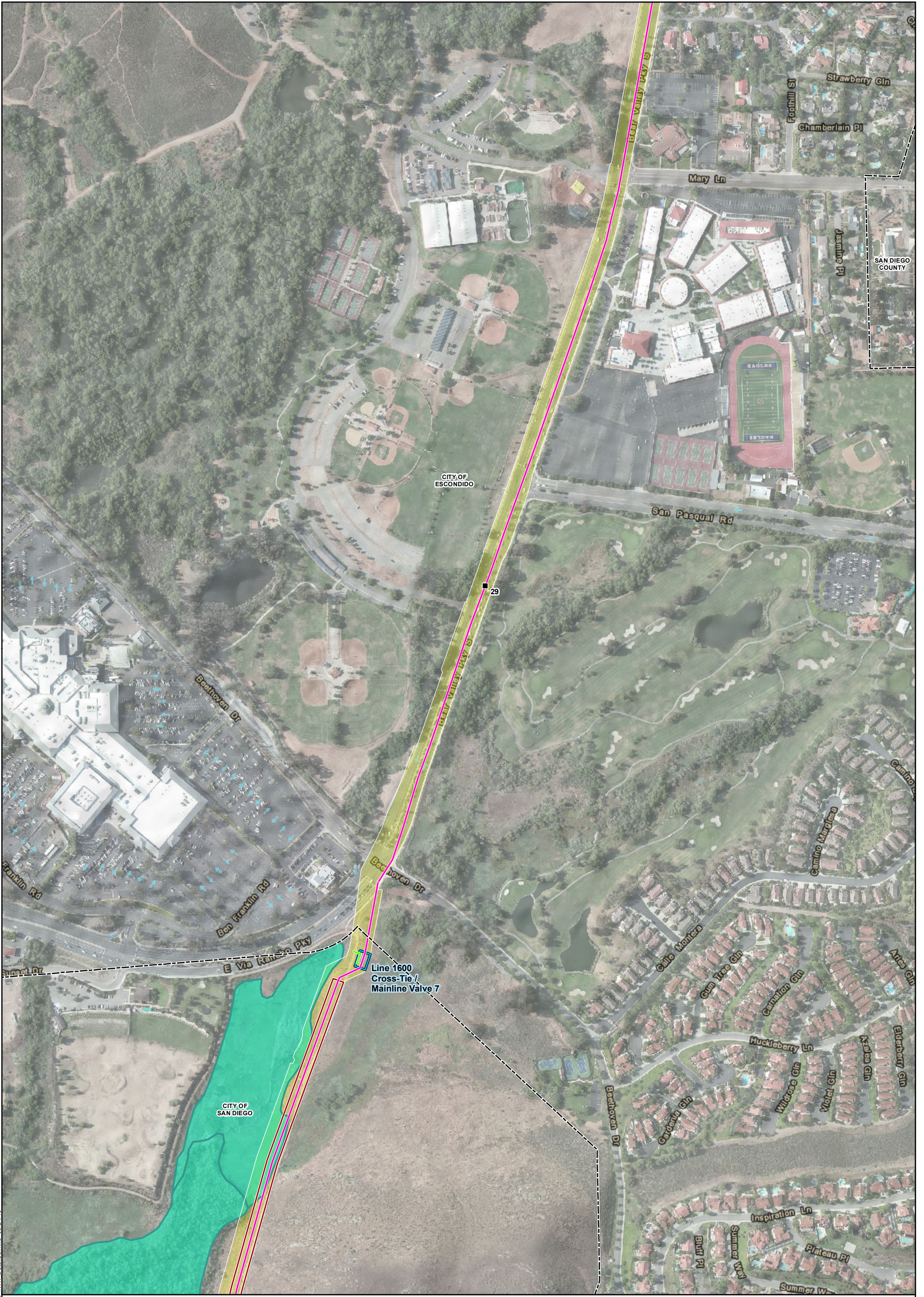
Pipeline Safety & Reliability Project

- |                                      |                        |  |                                      |
|--------------------------------------|------------------------|--|--------------------------------------|
| ■ Milepost                           | ■ Bore Pit             | □ Horizontal Directional Drill Workspace | ■ National Wetland Inventory Wetland |
| — Proposed Project Route             | □ Aboveground Facility | □ Laydown Area                           |                                      |
| --- Proposed Trenchless Construction | □ Existing Facility    | □ City/County Boundary                   |                                      |
| — Cross-Tie Connector Line           | □ Workspace            |  |                                      |



MXD:\PEA\Hydro\NWI\_Detailed.mxd 08/24/15

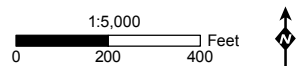
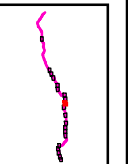




Attachment 4.9-B: National Wetlands Inventory Map 9 of 20

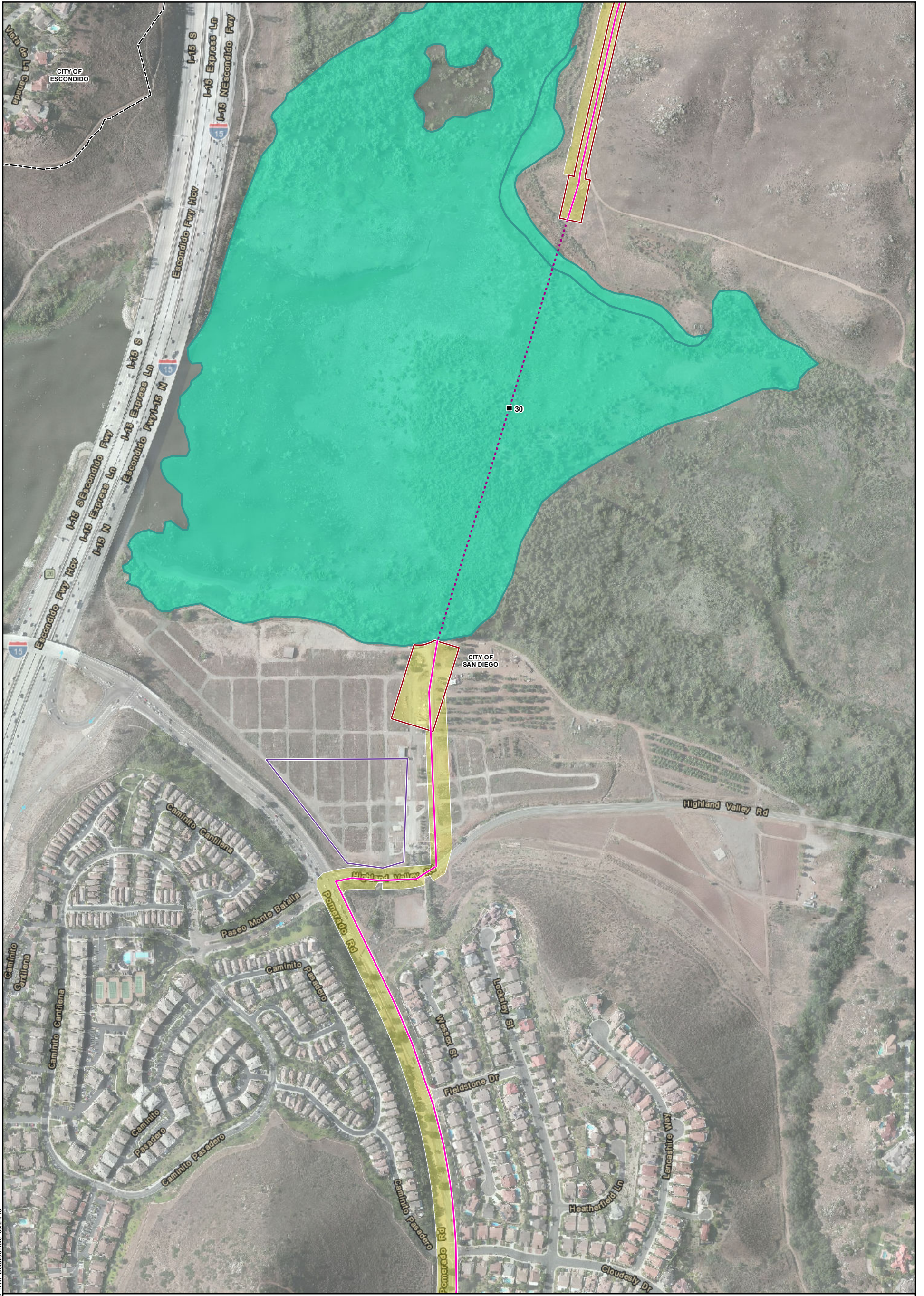
Pipeline Safety & Reliability Project

- Milepost
- Bore Pit
- Horizontal Directional Drill Workspace
- National Wetland Inventory Wetland
- Proposed Project Route
- Aboveground Facility
- Laydown Area
- Proposed Trenchless Construction
- Existing Facility
- City/County Boundary
- Cross-Tie Connector Line
- Workspace



MXD:\PEA\Hydro\NWI\_Detailed.mxd 08/24/15

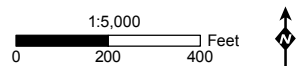
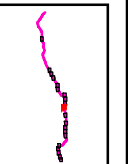




Attachment 4.9-B: National Wetlands Inventory Map 10 of 20

Pipeline Safety & Reliability Project

- Milepost
- Proposed Project Route
- Proposed Trenchless Construction
- Cross-Tie Connector Line
- Bore Pit
- Aboveground Facility
- Existing Facility
- Horizontal Directional Drill Workspace
- Laydown Area
- City/County Boundary
- Workspace
- National Wetland Inventory Wetland



MXD:\PEA\Hydro\NHD\_NWI\_Detailed.mxd 08/24/15

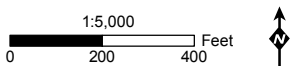
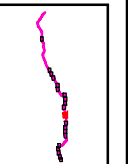




Attachment 4.9-B: National Wetlands Inventory Map 11 of 20

Pipeline Safety & Reliability Project

- Milepost
- Bore Pit
- Horizontal Directional Drill Workspace
- National Wetland Inventory Wetland
- Proposed Project Route
- Aboveground Facility
- Laydown Area
- Proposed Trenchless Construction
- Existing Facility
- City/County Boundary
- Cross-Tie Connector Line
- Workspace



MXD:\PEA\Hydro\NWD - Detailed.mxd 08/24/15

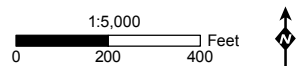
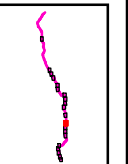




Attachment 4.9-B: National Wetlands Inventory Map 12 of 20

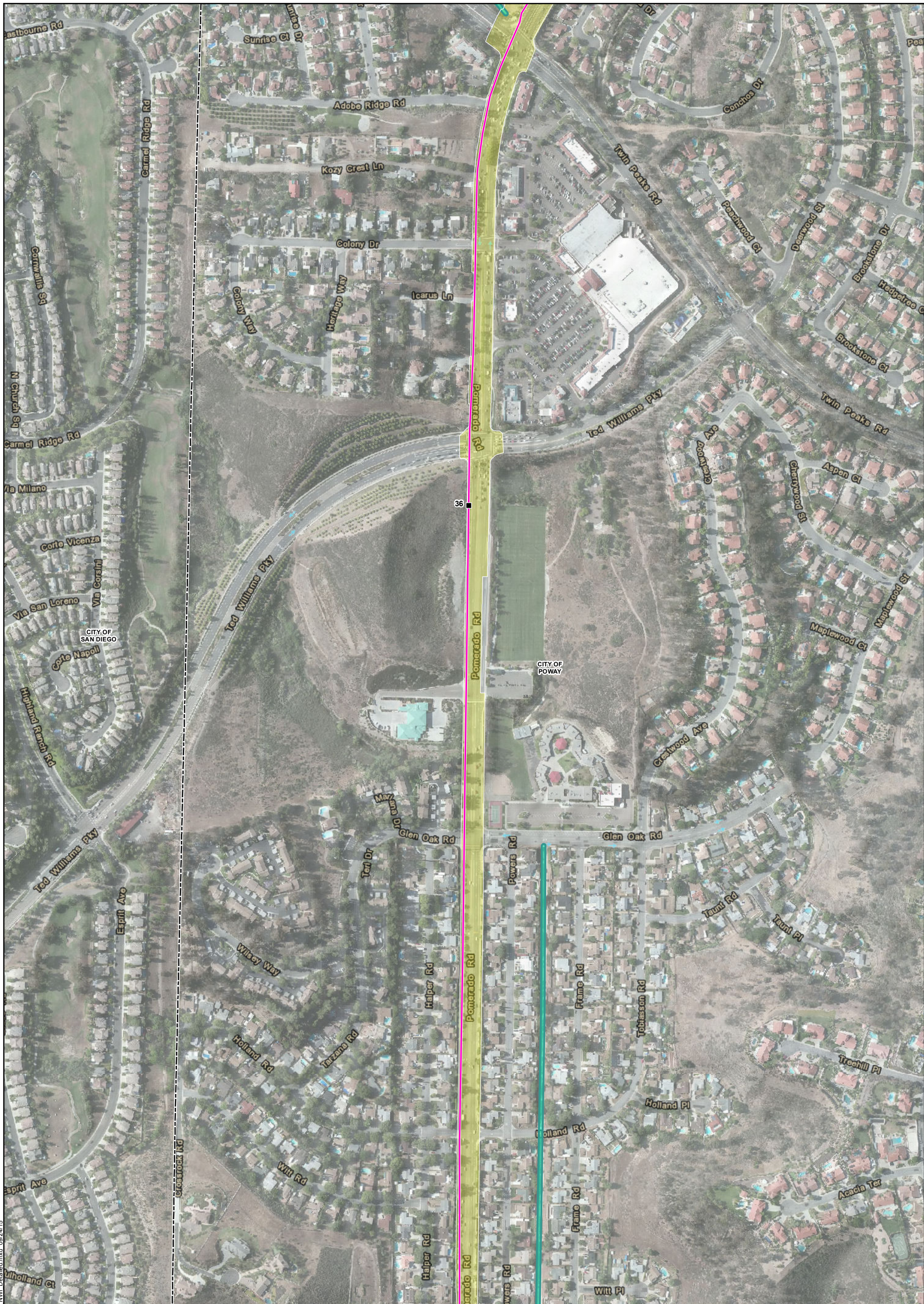
Pipeline Safety & Reliability Project

- Milepost
- Bore Pit
- Horizontal Directional Drill Workspace
- National Wetland Inventory Wetland
- Proposed Project Route
- Aboveground Facility
- Laydown Area
- Proposed Trenchless Construction
- Existing Facility
- City/County Boundary
- Cross-Tie Connector Line
- Workspace



MXD:\PEA\Hydro\NWD - Detailed.mxd 08/24/15

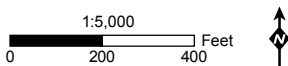
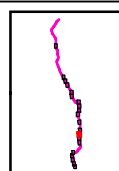




Attachment 4.9-B: National Wetlands Inventory Map 13 of 20

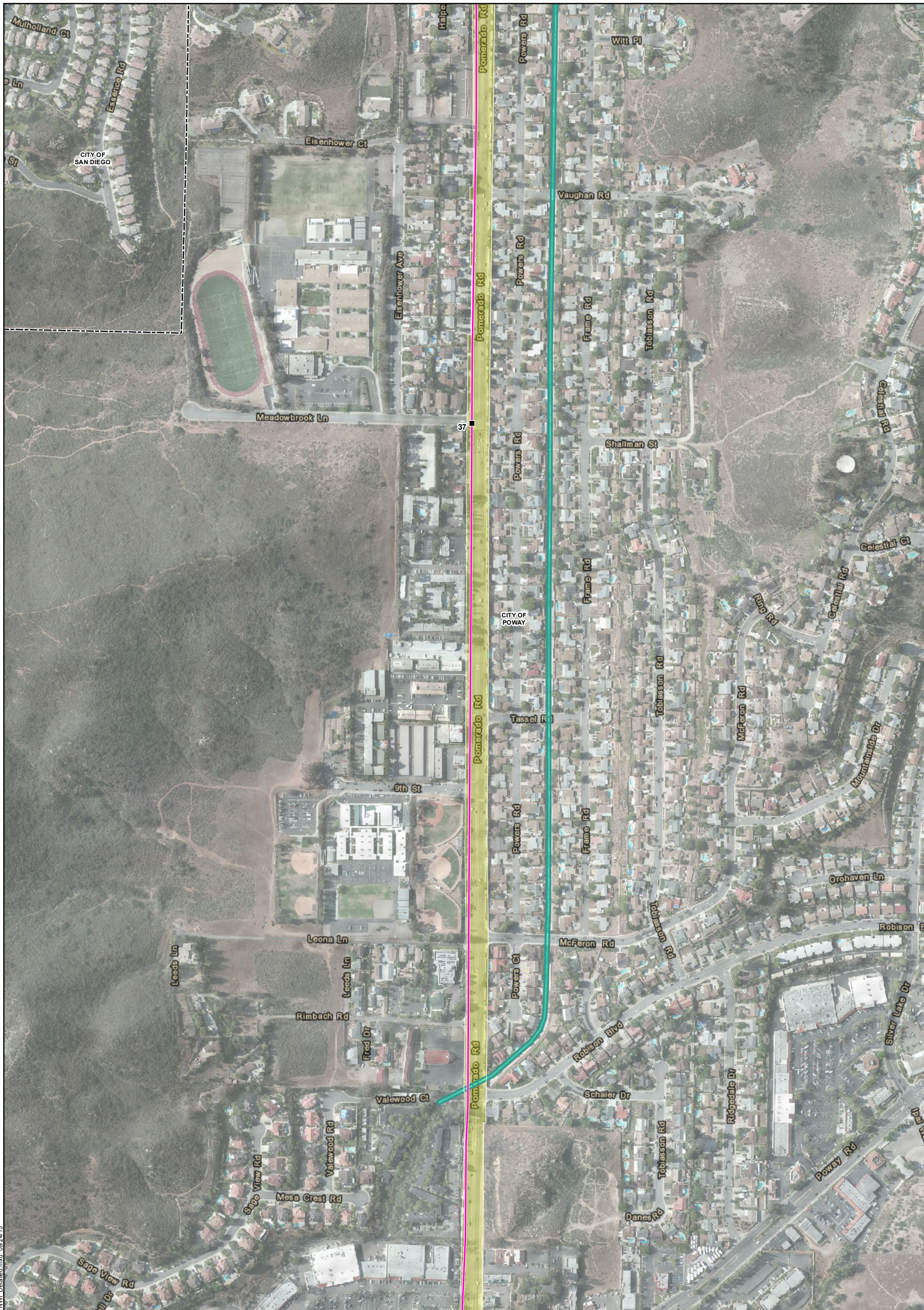
Pipeline Safety & Reliability Project

- Milepost
- Proposed Project Route
- Proposed Trenchless Construction
- Cross-Tie Connector Line
- Bore Pit
- Aboveground Facility
- Existing Facility
- Horizontal Directional Drill Workspace
- Laydown Area
- City/County Boundary
- Workspace
- National Wetland Inventory Wetland



MXD:\PE\AH\hydro\NWI\_Detailed.mxd 08/24/15

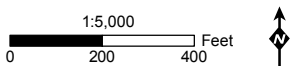




Attachment 4.9-B: National Wetlands Inventory Map 14 of 20

Pipeline Safety & Reliability Project

- Milepost
- Bore Pit
- Horizontal Directional Drill Workspace
- National Wetland Inventory Wetland
- Proposed Project Route
- Aboveground Facility
- Laydown Area
- Proposed Trenchless Construction
- Existing Facility
- City/County Boundary
- Cross-Tie Connector Line
- Workspace



MXD:\PEA\Hydro\NWI\_Detailed.mxd 08/24/15

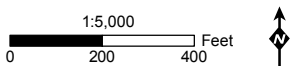
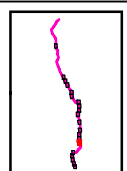




Attachment 4.9-B: National Wetlands Inventory Map 15 of 20

Pipeline Safety & Reliability Project

- Milepost
- Bore Pit
- Horizontal Directional Drill Workspace
- National Wetland Inventory Wetland
- Proposed Project Route
- Aboveground Facility
- Laydown Area
- Proposed Trenchless Construction
- Existing Facility
- City/County Boundary
- Cross-Tie Connector Line
- Workspace



MXD:\PEA\Hydro\NWI\_Detailed.mxd 08/24/15

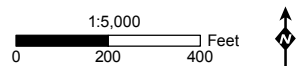
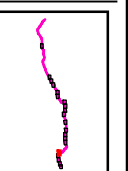




Attachment 4.9-B: National Wetlands Inventory Map 16 of 20

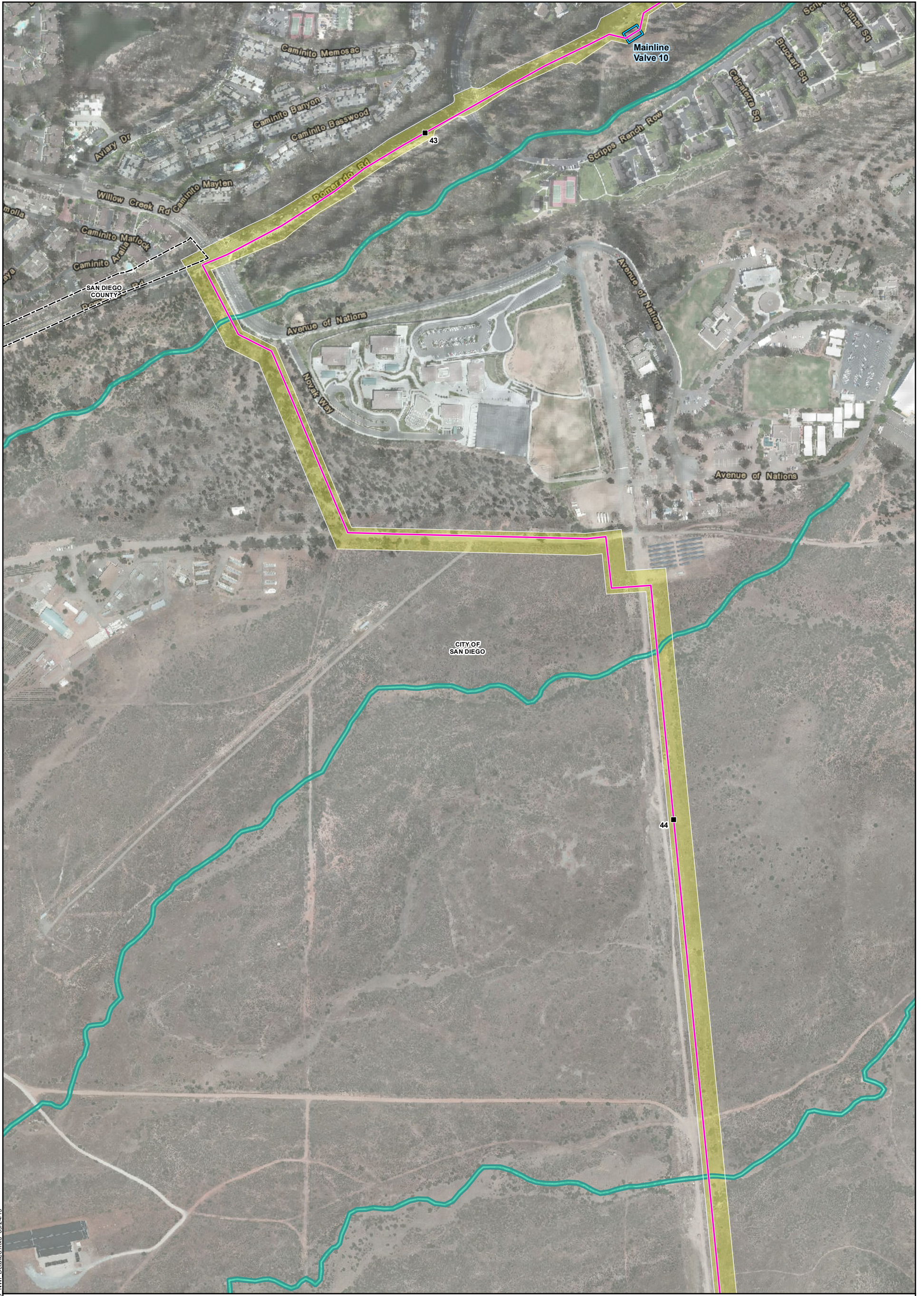
Pipeline Safety & Reliability Project

- Milepost
- Bore Pit
- ▭ Horizontal Directional Drill Workspace
- ▭ National Wetland Inventory Wetland
- Proposed Project Route
- ▭ Aboveground Facility
- ▭ Laydown Area
- Proposed Trenchless Construction
- ▭ Existing Facility
- ▭ City/County Boundary
- Cross-Tie Connector Line
- ▭ Workspace



MXD:\PEA\Hydro\NWI\_Detailed.mxd 08/24/15

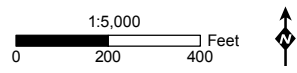
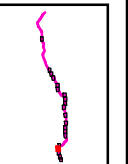




Attachment 4.9-B: National Wetlands Inventory Map 17 of 20

Pipeline Safety & Reliability Project

- Milepost
- Bore Pit
- Horizontal Directional Drill Workspace
- National Wetland Inventory Wetland
- Proposed Project Route
- Aboveground Facility
- Laydown Area
- Proposed Trenchless Construction
- Existing Facility
- City/County Boundary
- Cross-Tie Connector Line
- Workspace



MXDs\PEAH\hydro\NWI\_Detailed.mxd\_09/24/15



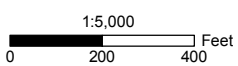
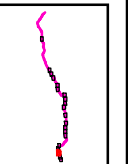


MXD:\PEAH\hydro\NWI\_Detailed.mxd 08/24/15

**Attachment 4.9-B: National Wetlands Inventory Map 18 of 20**

**Pipeline Safety & Reliability Project**

- |                                    |                        |  |                                      |
|------------------------------------|------------------------|--|--------------------------------------|
| ■ Milepost                         | ■ Bore Pit             | □ Horizontal Directional Drill Workspace | ■ National Wetland Inventory Wetland |
| — Proposed Project Route           | □ Aboveground Facility | □ Laydown Area                           |                                      |
| — Proposed Trenchless Construction | □ Existing Facility    | □ City/County Boundary                   |                                      |
| — Cross-Tie Connector Line         |                        | □ Workspace                              |                                      |





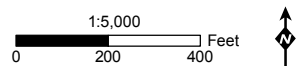
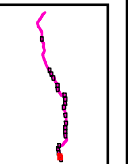


MXD:\PEA\Hydro\NWI\_Detailed.mxd 08/24/15

**Attachment 4.9-B: National Wetlands Inventory Map 19 of 20**

**Pipeline Safety & Reliability Project**

- |                                    |                        |  |                                      |
|------------------------------------|------------------------|--|--------------------------------------|
| ■ Milepost                         | ■ Bore Pit             | ▭ Horizontal Directional Drill Workspace | ▭ National Wetland Inventory Wetland |
| — Proposed Project Route           | ▭ Aboveground Facility | ▭ Laydown Area                           |                                      |
| ⋯ Proposed Trenchless Construction | ▭ Existing Facility    | ▭ City/County Boundary                   |                                      |
| — Cross-Tie Connector Line         |                        | ▭ Workspace                              |                                      |







MXD:\PEA\Hydro\NWI\_Detailed.mxd 08/24/15

**Attachment 4.9-B: National Wetlands Inventory Map 20 of 20**

**Pipeline Safety & Reliability Project**

- |                                      |                        |  |                                      |
|--------------------------------------|------------------------|--|--------------------------------------|
| ■ Milepost                           | ■ Bore Pit             | □ Horizontal Directional Drill Workspace | ■ National Wetland Inventory Wetland |
| — Proposed Project Route             | □ Aboveground Facility | □ Laydown Area                           |                                      |
| --- Proposed Trenchless Construction | □ Existing Facility    | □ City/County Boundary                   |                                      |
| — Cross-Tie Connector Line           |                        | ■ Workspace                              |                                      |

