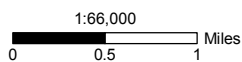
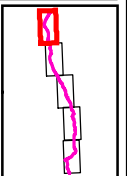


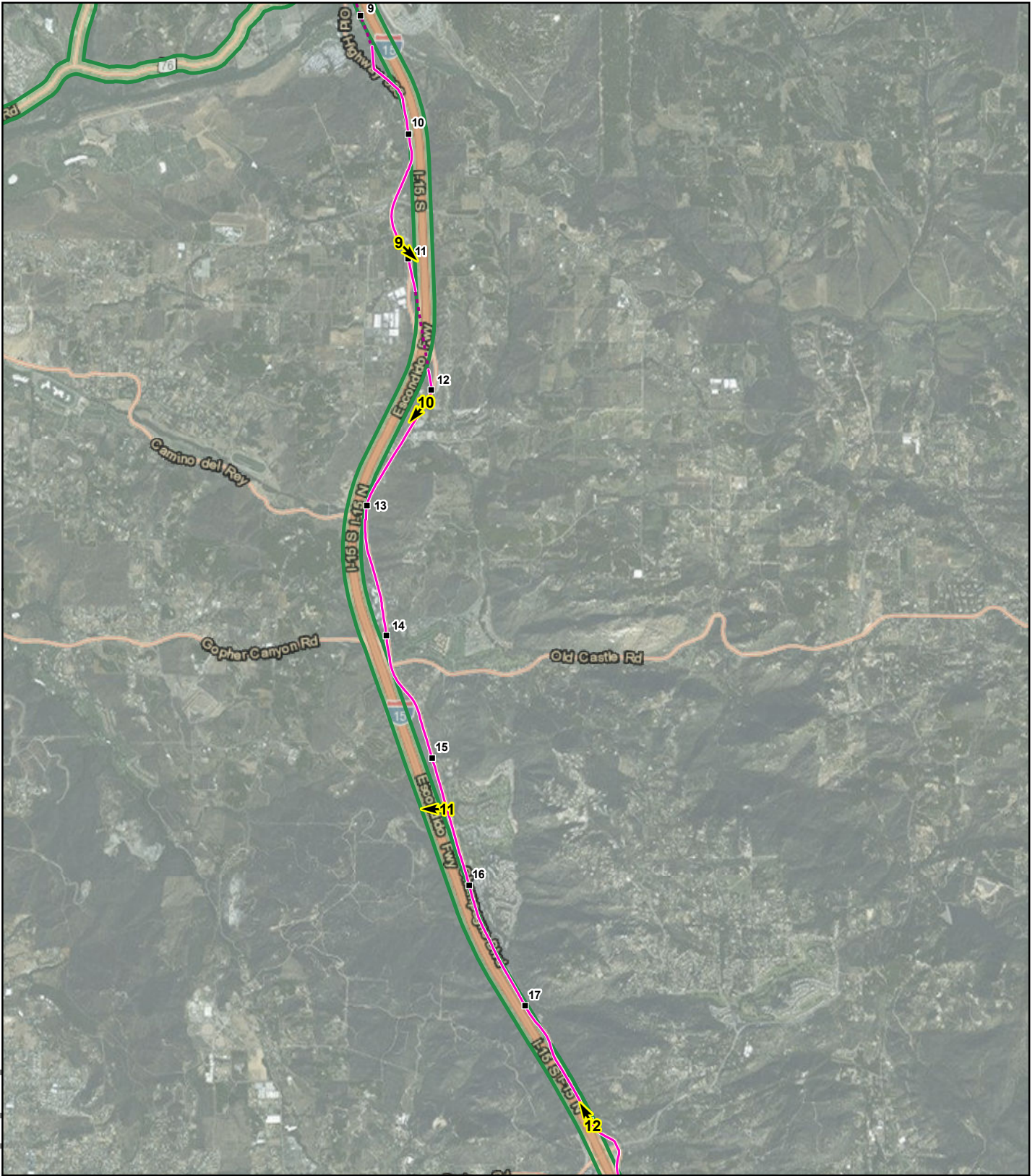
MXDs\PEA\Aesthetics\Character_Photo_locations_CSHs.mxd_09/21/15

Attachment 4.1-A: Proposed Project Visual Character Photograph Viewpoint Locations Map 1 of 5

Pipeline Safety & Reliability Project

- Milepost
- ▲ Photo Location
- Proposed Project Route
- Proposed Trenchless Construction
- County Scenic Highway
- [- -] County Boundary



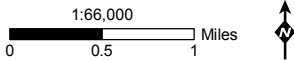
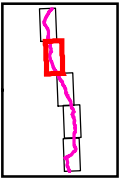


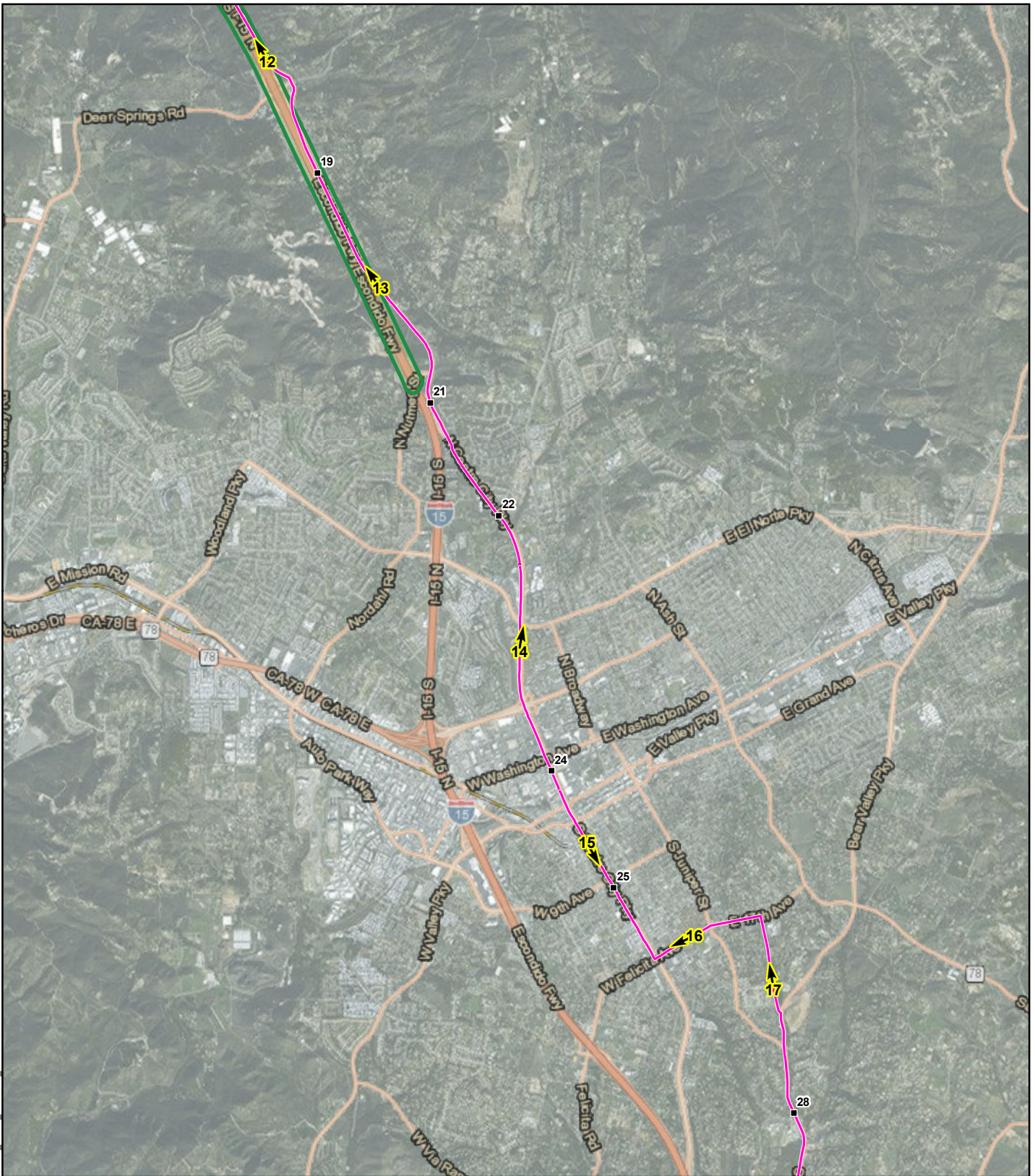
MXDs\PEA\Aesthetics\Character_Photo_locations_CSHs.mxd 09/21/15

Attachment 4.1-A: Proposed Project Visual Character Photograph Viewpoint Locations Map 2 of 5

Pipeline Safety & Reliability Project

- Milepost
- ▲ Photo Location
- Proposed Project Route
- - - Proposed Trenchless Construction
- County Scenic Highway
- - - County Boundary



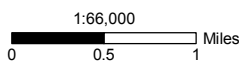
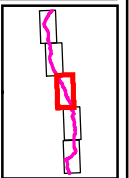


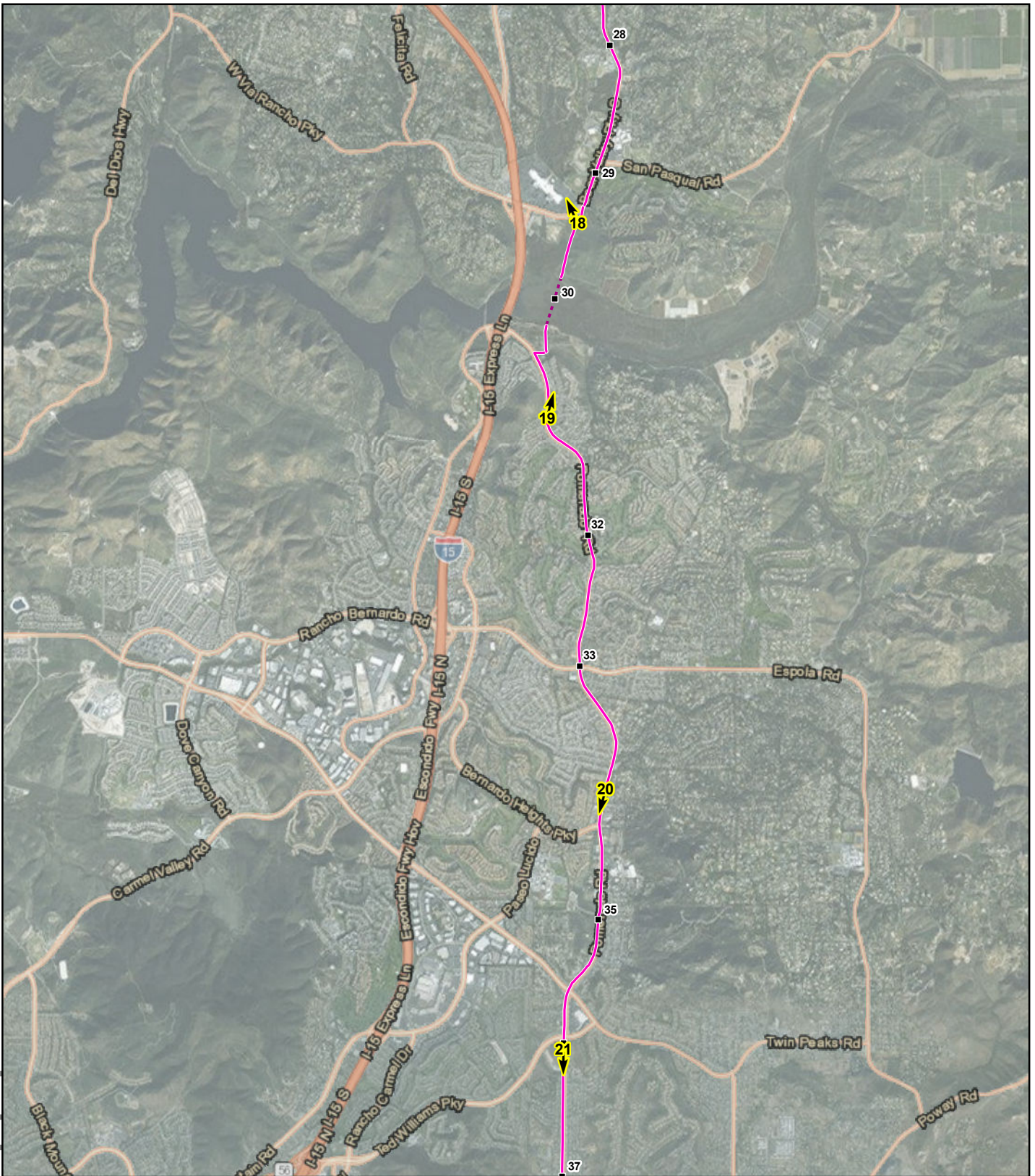
MXDs\PEA\Aesthetics\Character_Photo_locations_CSHs.mxd 09/21/15

Attachment 4.1-A: Proposed Project Visual Character Photograph Viewpoint Locations Map 3 of 5

Pipeline Safety & Reliability Project

- Milepost
- ▲ Photo Location
- Proposed Project Route
- - - Proposed Trenchless Construction
- County Scenic Highway
- County Boundary



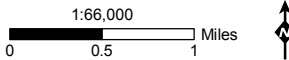
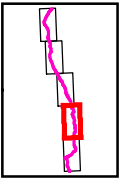


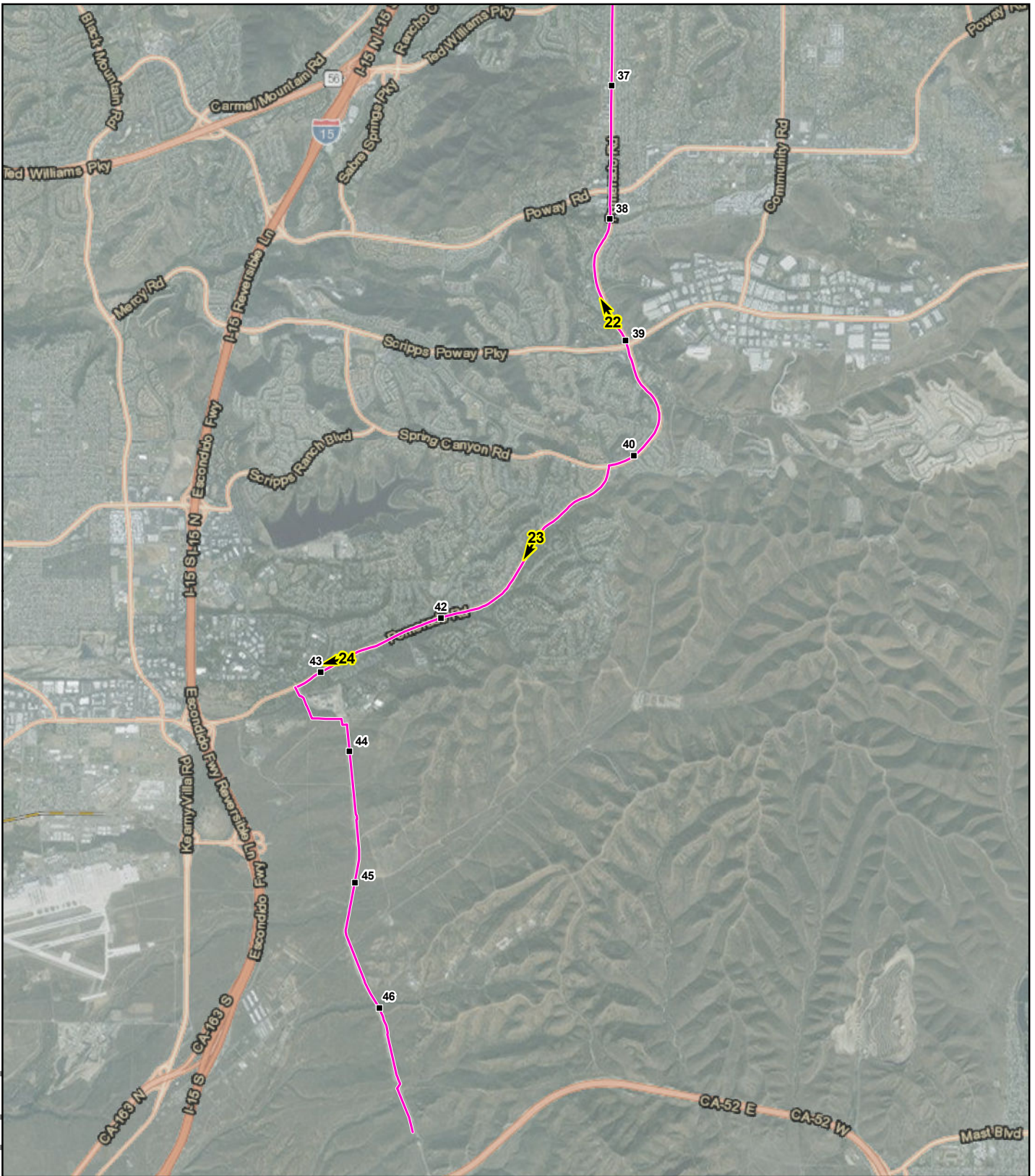
MXDs\PEA\Aesthetics\Character_Photo_locations_CSHs.mxd 09/21/15

Attachment 4.1-A: Proposed Project Visual Character Photograph Viewpoint Locations Map 4 of 5

Pipeline Safety & Reliability Project

- Milepost
- ▲ Photo Location
- Proposed Project Route
- - - Proposed Trenchless Construction
- County Scenic Highway
- County Boundary





MXDs\PEA\Aesthetics\Character_Photo_locations_CSH6.mxd 09/21/15

Attachment 4.1-A: Proposed Project Visual Character Photograph Viewpoint Locations Map 5 of 5

Pipeline Safety & Reliability Project

- Milepost
- ▲ Photo Location
- Proposed Project Route
- - - Proposed Trenchless Construction
- County Scenic Highway
- [- - -] County Boundary

