

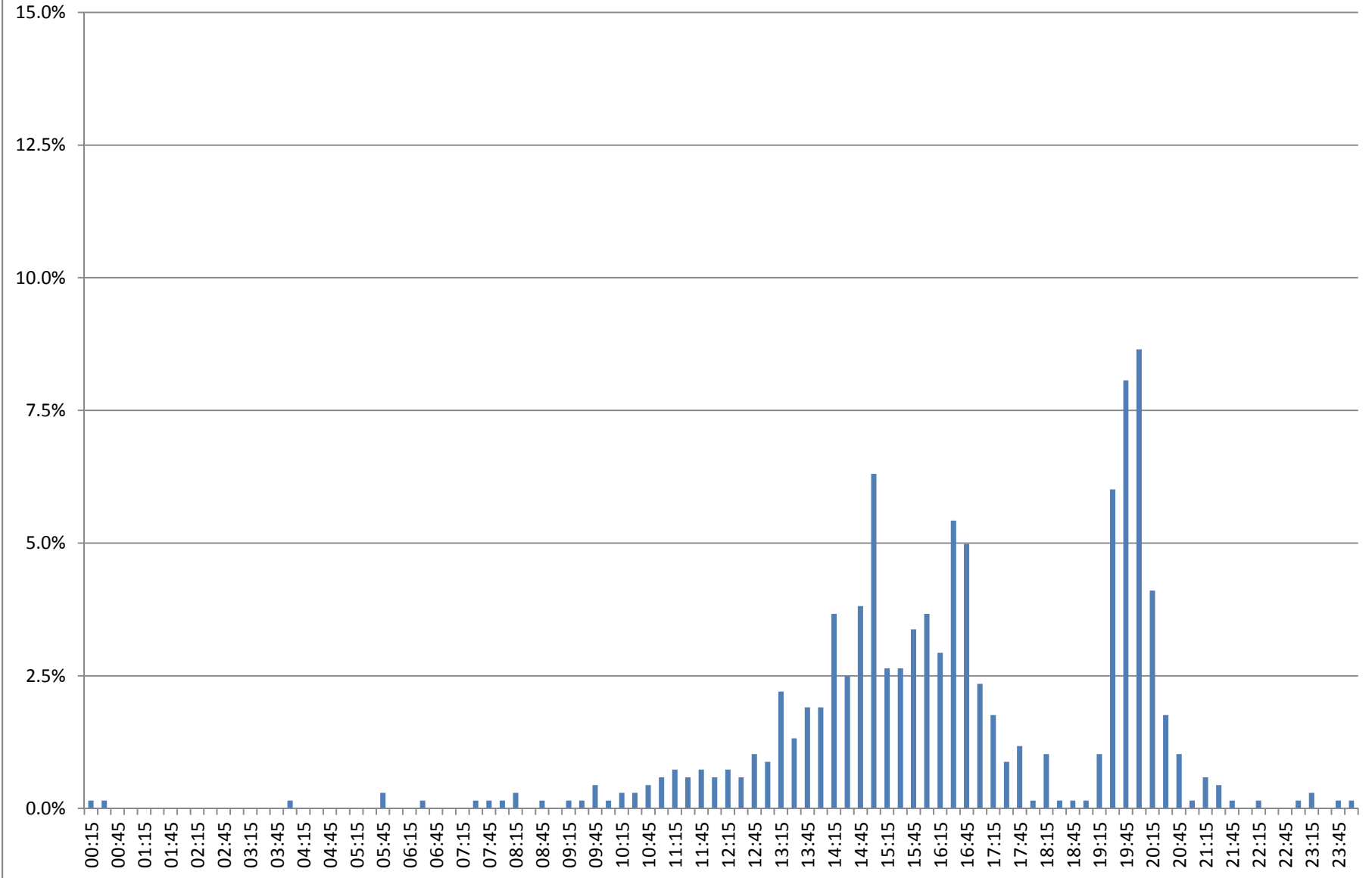
**R.14-07-002  
(NEM)  
*WORKPAPERS***

*Circuit Peak*

# NEM Successor Tariff Proposal, R.14-07-002 (Fang) Workpapers - September 30, 2015

	<b>Tab Name</b>	<b>Description</b>
1	"Percent Time Peak 9_16_14"	Graph of distribution of circuit peaks on system peak day
2	"Data 9_16_14"	Data of circuit peaks on system peak day
3	"Data 9_9_14"	Data of circuit peaks on typical summer day
4	"11am-6pm Peak"	Matching of circuits peaking between 11am-6pm on system peak day and typical summer day

### Distribution of Circuit Peaks All Time Peak Day 9/16/2014



**NEM Successor Tariff Proposal, R.14-07-002  
(Fang) Workpapers - September 30, 2015**

Circuit Observation #	Peak Interval	Time Formatted
1	0:00	00:00
2	0:15	00:15
3	0:30	00:30
4	4:00	04:00
5	5:45	05:45
6	5:45	05:45
7	6:30	06:30
8	7:30	07:30
9	7:45	07:45
10	8:00	08:00
11	8:15	08:15
12	8:15	08:15
13	8:45	08:45
14	9:15	09:15
15	9:30	09:30
16	9:45	09:45
17	9:45	09:45
18	9:45	09:45
19	10:00	10:00
20	10:15	10:15
21	10:15	10:15
22	10:30	10:30
23	10:30	10:30
24	10:45	10:45
25	10:45	10:45
26	10:45	10:45
27	11:00	11:00
28	11:00	11:00
29	11:00	11:00
30	11:00	11:00
31	11:15	11:15
32	11:15	11:15
33	11:15	11:15
34	11:15	11:15
35	11:15	11:15
36	11:30	11:30
37	11:30	11:30
38	11:30	11:30
39	11:30	11:30
40	11:45	11:45
41	11:45	11:45
42	11:45	11:45
43	11:45	11:45
44	11:45	11:45

**NEM Successor Tariff Proposal, R.14-07-002  
(Fang) Workpapers - September 30, 2015**

Circuit Observation #	Peak Interval	Time Formatted
45	12:00	12:00
46	12:00	12:00
47	12:00	12:00
48	12:00	12:00
49	12:15	12:15
50	12:15	12:15
51	12:15	12:15
52	12:15	12:15
53	12:15	12:15
54	12:30	12:30
55	12:30	12:30
56	12:30	12:30
57	12:30	12:30
58	12:45	12:45
59	12:45	12:45
60	12:45	12:45
61	12:45	12:45
62	12:45	12:45
63	12:45	12:45
64	12:45	12:45
65	13:00	13:00
66	13:00	13:00
67	13:00	13:00
68	13:00	13:00
69	13:00	13:00
70	13:00	13:00
71	13:15	13:15
72	13:15	13:15
73	13:15	13:15
74	13:15	13:15
75	13:15	13:15
76	13:15	13:15
77	13:15	13:15
78	13:15	13:15
79	13:15	13:15
80	13:15	13:15
81	13:15	13:15
82	13:15	13:15
83	13:15	13:15
84	13:15	13:15
85	13:15	13:15
86	13:30	13:30
87	13:30	13:30
88	13:30	13:30
89	13:30	13:30
90	13:30	13:30

**NEM Successor Tariff Proposal, R.14-07-002  
(Fang) Workpapers - September 30, 2015**

Circuit Observation #	Peak Interval	Time Formatted
91	13:30	13:30
92	13:30	13:30
93	13:30	13:30
94	13:30	13:30
95	13:45	13:45
96	13:45	13:45
97	13:45	13:45
98	13:45	13:45
99	13:45	13:45
100	13:45	13:45
101	13:45	13:45
102	13:45	13:45
103	13:45	13:45
104	13:45	13:45
105	13:45	13:45
106	13:45	13:45
107	13:45	13:45
108	14:00	14:00
109	14:00	14:00
110	14:00	14:00
111	14:00	14:00
112	14:00	14:00
113	14:00	14:00
114	14:00	14:00
115	14:00	14:00
116	14:00	14:00
117	14:00	14:00
118	14:00	14:00
119	14:00	14:00
120	14:00	14:00
121	14:15	14:15
122	14:15	14:15
123	14:15	14:15
124	14:15	14:15
125	14:15	14:15
126	14:15	14:15
127	14:15	14:15
128	14:15	14:15
129	14:15	14:15
130	14:15	14:15
131	14:15	14:15
132	14:15	14:15
133	14:15	14:15
134	14:15	14:15
135	14:15	14:15
136	14:15	14:15

**NEM Successor Tariff Proposal, R.14-07-002  
(Fang) Workpapers - September 30, 2015**

Circuit Observation #	Peak Interval	Time Formatted
137	14:15	14:15
138	14:15	14:15
139	14:15	14:15
140	14:15	14:15
141	14:15	14:15
142	14:15	14:15
143	14:15	14:15
144	14:15	14:15
145	14:15	14:15
146	14:30	14:30
147	14:30	14:30
148	14:30	14:30
149	14:30	14:30
150	14:30	14:30
151	14:30	14:30
152	14:30	14:30
153	14:30	14:30
154	14:30	14:30
155	14:30	14:30
156	14:30	14:30
157	14:30	14:30
158	14:30	14:30
159	14:30	14:30
160	14:30	14:30
161	14:30	14:30
162	14:30	14:30
163	14:45	14:45
164	14:45	14:45
165	14:45	14:45
166	14:45	14:45
167	14:45	14:45
168	14:45	14:45
169	14:45	14:45
170	14:45	14:45
171	14:45	14:45
172	14:45	14:45
173	14:45	14:45
174	14:45	14:45
175	14:45	14:45
176	14:45	14:45
177	14:45	14:45
178	14:45	14:45
179	14:45	14:45
180	14:45	14:45
181	14:45	14:45
182	14:45	14:45



**NEM Successor Tariff Proposal, R.14-07-002  
(Fang) Workpapers - September 30, 2015**

Circuit Observation #	Peak Interval	Time Formatted
183	14:45	14:45
184	14:45	14:45
185	14:45	14:45
186	14:45	14:45
187	14:45	14:45
188	14:45	14:45
189	15:00	15:00
190	15:00	15:00
191	15:00	15:00
192	15:00	15:00
193	15:00	15:00
194	15:00	15:00
195	15:00	15:00
196	15:00	15:00
197	15:00	15:00
198	15:00	15:00
199	15:00	15:00
200	15:00	15:00
201	15:00	15:00
202	15:00	15:00
203	15:00	15:00
204	15:00	15:00
205	15:00	15:00
206	15:00	15:00
207	15:00	15:00
208	15:00	15:00
209	15:00	15:00
210	15:00	15:00
211	15:00	15:00
212	15:00	15:00
213	15:00	15:00
214	15:00	15:00
215	15:00	15:00
216	15:00	15:00
217	15:00	15:00
218	15:00	15:00
219	15:00	15:00
220	15:00	15:00
221	15:00	15:00
222	15:00	15:00
223	15:00	15:00
224	15:00	15:00
225	15:00	15:00
226	15:00	15:00
227	15:00	15:00
228	15:00	15:00

**NEM Successor Tariff Proposal, R.14-07-002  
(Fang) Workpapers - September 30, 2015**

Circuit Observation #	Peak Interval	Time Formatted
229	15:00	15:00
230	15:00	15:00
231	15:00	15:00
232	15:15	15:15
233	15:15	15:15
234	15:15	15:15
235	15:15	15:15
236	15:15	15:15
237	15:15	15:15
238	15:15	15:15
239	15:15	15:15
240	15:15	15:15
241	15:15	15:15
242	15:15	15:15
243	15:15	15:15
244	15:15	15:15
245	15:15	15:15
246	15:15	15:15
247	15:15	15:15
248	15:15	15:15
249	15:15	15:15
250	15:30	15:30
251	15:30	15:30
252	15:30	15:30
253	15:30	15:30
254	15:30	15:30
255	15:30	15:30
256	15:30	15:30
257	15:30	15:30
258	15:30	15:30
259	15:30	15:30
260	15:30	15:30
261	15:30	15:30
262	15:30	15:30
263	15:30	15:30
264	15:30	15:30
265	15:30	15:30
266	15:30	15:30
267	15:30	15:30
268	15:45	15:45
269	15:45	15:45
270	15:45	15:45
271	15:45	15:45
272	15:45	15:45
273	15:45	15:45
274	15:45	15:45

**NEM Successor Tariff Proposal, R.14-07-002  
(Fang) Workpapers - September 30, 2015**

Circuit Observation #	Peak Interval	Time Formatted
275	15:45	15:45
276	15:45	15:45
277	15:45	15:45
278	15:45	15:45
279	15:45	15:45
280	15:45	15:45
281	15:45	15:45
282	15:45	15:45
283	15:45	15:45
284	15:45	15:45
285	15:45	15:45
286	15:45	15:45
287	15:45	15:45
288	15:45	15:45
289	15:45	15:45
290	15:45	15:45
291	16:00	16:00
292	16:00	16:00
293	16:00	16:00
294	16:00	16:00
295	16:00	16:00
296	16:00	16:00
297	16:00	16:00
298	16:00	16:00
299	16:00	16:00
300	16:00	16:00
301	16:00	16:00
302	16:00	16:00
303	16:00	16:00
304	16:00	16:00
305	16:00	16:00
306	16:00	16:00
307	16:00	16:00
308	16:00	16:00
309	16:00	16:00
310	16:00	16:00
311	16:00	16:00
312	16:00	16:00
313	16:00	16:00
314	16:00	16:00
315	16:00	16:00
316	16:15	16:15
317	16:15	16:15
318	16:15	16:15
319	16:15	16:15
320	16:15	16:15

**NEM Successor Tariff Proposal, R.14-07-002  
(Fang) Workpapers - September 30, 2015**

Circuit Observation #	Peak Interval	Time Formatted
321	16:15	16:15
322	16:15	16:15
323	16:15	16:15
324	16:15	16:15
325	16:15	16:15
326	16:15	16:15
327	16:15	16:15
328	16:15	16:15
329	16:15	16:15
330	16:15	16:15
331	16:15	16:15
332	16:15	16:15
333	16:15	16:15
334	16:15	16:15
335	16:15	16:15
336	16:30	16:30
337	16:30	16:30
338	16:30	16:30
339	16:30	16:30
340	16:30	16:30
341	16:30	16:30
342	16:30	16:30
343	16:30	16:30
344	16:30	16:30
345	16:30	16:30
346	16:30	16:30
347	16:30	16:30
348	16:30	16:30
349	16:30	16:30
350	16:30	16:30
351	16:30	16:30
352	16:30	16:30
353	16:30	16:30
354	16:30	16:30
355	16:30	16:30
356	16:30	16:30
357	16:30	16:30
358	16:30	16:30
359	16:30	16:30
360	16:30	16:30
361	16:30	16:30
362	16:30	16:30
363	16:30	16:30
364	16:30	16:30
365	16:30	16:30
366	16:30	16:30

**NEM Successor Tariff Proposal, R.14-07-002  
(Fang) Workpapers - September 30, 2015**

Circuit Observation #	Peak Interval	Time Formatted
367	16:30	16:30
368	16:30	16:30
369	16:30	16:30
370	16:30	16:30
371	16:30	16:30
372	16:30	16:30
373	16:45	16:45
374	16:45	16:45
375	16:45	16:45
376	16:45	16:45
377	16:45	16:45
378	16:45	16:45
379	16:45	16:45
380	16:45	16:45
381	16:45	16:45
382	16:45	16:45
383	16:45	16:45
384	16:45	16:45
385	16:45	16:45
386	16:45	16:45
387	16:45	16:45
388	16:45	16:45
389	16:45	16:45
390	16:45	16:45
391	16:45	16:45
392	16:45	16:45
393	16:45	16:45
394	16:45	16:45
395	16:45	16:45
396	16:45	16:45
397	16:45	16:45
398	16:45	16:45
399	16:45	16:45
400	16:45	16:45
401	16:45	16:45
402	16:45	16:45
403	16:45	16:45
404	16:45	16:45
405	16:45	16:45
406	16:45	16:45
407	17:00	17:00
408	17:00	17:00
409	17:00	17:00
410	17:00	17:00
411	17:00	17:00
412	17:00	17:00

**NEM Successor Tariff Proposal, R.14-07-002  
(Fang) Workpapers - September 30, 2015**

Circuit Observation #	Peak Interval	Time Formatted
413	17:00	17:00
414	17:00	17:00
415	17:00	17:00
416	17:00	17:00
417	17:00	17:00
418	17:00	17:00
419	17:00	17:00
420	17:00	17:00
421	17:00	17:00
422	17:00	17:00
423	17:15	17:15
424	17:15	17:15
425	17:15	17:15
426	17:15	17:15
427	17:15	17:15
428	17:15	17:15
429	17:15	17:15
430	17:15	17:15
431	17:15	17:15
432	17:15	17:15
433	17:15	17:15
434	17:15	17:15
435	17:30	17:30
436	17:30	17:30
437	17:30	17:30
438	17:30	17:30
439	17:30	17:30
440	17:30	17:30
441	17:45	17:45
442	17:45	17:45
443	17:45	17:45
444	17:45	17:45
445	17:45	17:45
446	17:45	17:45
447	17:45	17:45
448	17:45	17:45
449	18:00	18:00
450	18:15	18:15
451	18:15	18:15
452	18:15	18:15
453	18:15	18:15
454	18:15	18:15
455	18:15	18:15
456	18:15	18:15
457	18:30	18:30
458	18:45	18:45

**NEM Successor Tariff Proposal, R.14-07-002  
(Fang) Workpapers - September 30, 2015**

Circuit Observation #	Peak Interval	Time Formatted
459	19:00	19:00
460	19:15	19:15
461	19:15	19:15
462	19:15	19:15
463	19:15	19:15
464	19:15	19:15
465	19:15	19:15
466	19:15	19:15
467	19:30	19:30
468	19:30	19:30
469	19:30	19:30
470	19:30	19:30
471	19:30	19:30
472	19:30	19:30
473	19:30	19:30
474	19:30	19:30
475	19:30	19:30
476	19:30	19:30
477	19:30	19:30
478	19:30	19:30
479	19:30	19:30
480	19:30	19:30
481	19:30	19:30
482	19:30	19:30
483	19:30	19:30
484	19:30	19:30
485	19:30	19:30
486	19:30	19:30
487	19:30	19:30
488	19:30	19:30
489	19:30	19:30
490	19:30	19:30
491	19:30	19:30
492	19:30	19:30
493	19:30	19:30
494	19:30	19:30
495	19:30	19:30
496	19:30	19:30
497	19:30	19:30
498	19:30	19:30
499	19:30	19:30
500	19:30	19:30
501	19:30	19:30
502	19:30	19:30
503	19:30	19:30
504	19:30	19:30

**NEM Successor Tariff Proposal, R.14-07-002  
(Fang) Workpapers - September 30, 2015**

Circuit Observation #	Peak Interval	Time Formatted
505	19:30	19:30
506	19:30	19:30
507	19:30	19:30
508	19:45	19:45
509	19:45	19:45
510	19:45	19:45
511	19:45	19:45
512	19:45	19:45
513	19:45	19:45
514	19:45	19:45
515	19:45	19:45
516	19:45	19:45
517	19:45	19:45
518	19:45	19:45
519	19:45	19:45
520	19:45	19:45
521	19:45	19:45
522	19:45	19:45
523	19:45	19:45
524	19:45	19:45
525	19:45	19:45
526	19:45	19:45
527	19:45	19:45
528	19:45	19:45
529	19:45	19:45
530	19:45	19:45
531	19:45	19:45
532	19:45	19:45
533	19:45	19:45
534	19:45	19:45
535	19:45	19:45
536	19:45	19:45
537	19:45	19:45
538	19:45	19:45
539	19:45	19:45
540	19:45	19:45
541	19:45	19:45
542	19:45	19:45
543	19:45	19:45
544	19:45	19:45
545	19:45	19:45
546	19:45	19:45
547	19:45	19:45
548	19:45	19:45
549	19:45	19:45
550	19:45	19:45



**NEM Successor Tariff Proposal, R.14-07-002  
(Fang) Workpapers - September 30, 2015**

Circuit Observation #	Peak Interval	Time Formatted
551	19:45	19:45
552	19:45	19:45
553	19:45	19:45
554	19:45	19:45
555	19:45	19:45
556	19:45	19:45
557	19:45	19:45
558	19:45	19:45
559	19:45	19:45
560	19:45	19:45
561	19:45	19:45
562	19:45	19:45
563	20:00	20:00
564	20:00	20:00
565	20:00	20:00
566	20:00	20:00
567	20:00	20:00
568	20:00	20:00
569	20:00	20:00
570	20:00	20:00
571	20:00	20:00
572	20:00	20:00
573	20:00	20:00
574	20:00	20:00
575	20:00	20:00
576	20:00	20:00
577	20:00	20:00
578	20:00	20:00
579	20:00	20:00
580	20:00	20:00
581	20:00	20:00
582	20:00	20:00
583	20:00	20:00
584	20:00	20:00
585	20:00	20:00
586	20:00	20:00
587	20:00	20:00
588	20:00	20:00
589	20:00	20:00
590	20:00	20:00
591	20:00	20:00
592	20:00	20:00
593	20:00	20:00
594	20:00	20:00
595	20:00	20:00
596	20:00	20:00

**NEM Successor Tariff Proposal, R.14-07-002  
(Fang) Workpapers - September 30, 2015**

Circuit Observation #	Peak Interval	Time Formatted
597	20:00	20:00
598	20:00	20:00
599	20:00	20:00
600	20:00	20:00
601	20:00	20:00
602	20:00	20:00
603	20:00	20:00
604	20:00	20:00
605	20:00	20:00
606	20:00	20:00
607	20:00	20:00
608	20:00	20:00
609	20:00	20:00
610	20:00	20:00
611	20:00	20:00
612	20:00	20:00
613	20:00	20:00
614	20:00	20:00
615	20:00	20:00
616	20:00	20:00
617	20:00	20:00
618	20:00	20:00
619	20:00	20:00
620	20:00	20:00
621	20:00	20:00
622	20:15	20:15
623	20:15	20:15
624	20:15	20:15
625	20:15	20:15
626	20:15	20:15
627	20:15	20:15
628	20:15	20:15
629	20:15	20:15
630	20:15	20:15
631	20:15	20:15
632	20:15	20:15
633	20:15	20:15
634	20:15	20:15
635	20:15	20:15
636	20:15	20:15
637	20:15	20:15
638	20:15	20:15
639	20:15	20:15
640	20:15	20:15
641	20:15	20:15
642	20:15	20:15

**NEM Successor Tariff Proposal, R.14-07-002  
(Fang) Workpapers - September 30, 2015**

Circuit Observation #	Peak Interval	Time Formatted
643	20:15	20:15
644	20:15	20:15
645	20:15	20:15
646	20:15	20:15
647	20:15	20:15
648	20:15	20:15
649	20:15	20:15
650	20:30	20:30
651	20:30	20:30
652	20:30	20:30
653	20:30	20:30
654	20:30	20:30
655	20:30	20:30
656	20:30	20:30
657	20:30	20:30
658	20:30	20:30
659	20:30	20:30
660	20:30	20:30
661	20:30	20:30
662	20:45	20:45
663	20:45	20:45
664	20:45	20:45
665	20:45	20:45
666	20:45	20:45
667	20:45	20:45
668	20:45	20:45
669	21:00	21:00
670	21:15	21:15
671	21:15	21:15
672	21:15	21:15
673	21:15	21:15
674	21:30	21:30
675	21:30	21:30
676	21:30	21:30
677	21:45	21:45
678	22:15	22:15
679	23:00	23:00
680	23:15	23:15
681	23:15	23:15
682	23:45	23:45

**NEM Successor Tariff Proposal, R.14-07-002  
(Fang) Workpapers - September 30, 2015**

Time	Perc Circ 9/16/2014	# Circuits
00:15	0.1%	1
00:30	0.1%	1
00:45	0.0%	0
01:00	0.0%	0
01:15	0.0%	0
01:30	0.0%	0
01:45	0.0%	0
02:00	0.0%	0
02:15	0.0%	0
02:30	0.0%	0
02:45	0.0%	0
03:00	0.0%	0
03:15	0.0%	0
03:30	0.0%	0
03:45	0.0%	0
04:00	0.1%	1
04:15	0.0%	0
04:30	0.0%	0
04:45	0.0%	0
05:00	0.0%	0
05:15	0.0%	0
05:30	0.0%	0
05:45	0.3%	2
06:00	0.0%	0
06:15	0.0%	0
06:30	0.1%	1
06:45	0.0%	0
07:00	0.0%	0
07:15	0.0%	0
07:30	0.1%	1
07:45	0.1%	1
08:00	0.1%	1
08:15	0.3%	2
08:30	0.0%	0
08:45	0.1%	1
09:00	0.0%	0
09:15	0.1%	1
09:30	0.1%	1
09:45	0.4%	3
10:00	0.1%	1
10:15	0.3%	2
10:30	0.3%	2
10:45	0.4%	3
11:00	0.6%	4

**NEM Successor Tariff Proposal, R.14-07-002  
(Fang) Workpapers - September 30, 2015**

Time	Perc Circ 9/16/2014	# Circuits
11:15	0.7%	5
11:30	0.6%	4
11:45	0.7%	5
12:00	0.6%	4
12:15	0.7%	5
12:30	0.6%	4
12:45	1.0%	7
13:00	0.9%	6
13:15	2.2%	15
13:30	1.3%	9
13:45	1.9%	13
14:00	1.9%	13
14:15	3.7%	25
14:30	2.5%	17
14:45	3.8%	26
15:00	6.3%	43
15:15	2.6%	18
15:30	2.6%	18
15:45	3.4%	23
16:00	3.7%	25
16:15	2.9%	20
16:30	5.4%	37
16:45	5.0%	34
17:00	2.3%	16
17:15	1.8%	12
17:30	0.9%	6
17:45	1.2%	8
18:00	0.1%	1
18:15	1.0%	7
18:30	0.1%	1
18:45	0.1%	1
19:00	0.1%	1
19:15	1.0%	7
19:30	6.0%	41
19:45	8.1%	55
20:00	8.7%	59
20:15	4.1%	28
20:30	1.8%	12
20:45	1.0%	7
21:00	0.1%	1
21:15	0.6%	4
21:30	0.4%	3
21:45	0.1%	1
22:00	0.0%	0
22:15	0.1%	1
22:30	0.0%	0

**NEM Successor Tariff Proposal, R.14-07-002  
(Fang) Workpapers - September 30, 2015**

Time	Perc Circ 9/16/2014	# Circuits
22:45	0.0%	0
23:00	0.1%	1
23:15	0.3%	2
23:30	0.0%	0
23:45	0.1%	1
00:00	0.1%	1
	TOTAL	682

**NEM Successor Tariff Proposal, R.14-07-002  
(Fang) Workpapers - September 30, 2015**

	<b># Circuits</b>	<b>% Circuits</b>	<b>% Circuits NOT</b>
11am-6pm	422	62%	38%

	<b># Circuits</b>	<b>% Circuits</b>
12am-12pm	44	6%
12pm-4pm	246	36%
4pm-9pm	378	55%
9pm-12am	14	2%

**NEM Successor Tariff Proposal, R.14-07-002  
(Fang) Workpapers - September 30, 2015**

Circuit Observation #	Peak Interval	Time Formatted
27	0:00	00:00
8	5:15	05:15
2	5:15	05:15
6	5:45	05:45
681	6:00	06:00
7	6:30	06:30
14	7:00	07:00
467	7:15	07:15
22	7:45	07:45
17	8:00	08:00
376	9:00	09:00
437	9:15	09:15
450	9:45	09:45
18	10:00	10:00
203	10:15	10:15
180	10:15	10:15
164	10:30	10:30
570	10:30	10:30
146	10:45	10:45
97	10:45	10:45
461	10:45	10:45
23	10:45	10:45
148	11:00	11:00
220	11:00	11:00
669	11:15	11:15
29	11:15	11:15
469	11:15	11:15
168	11:15	11:15
32	11:15	11:15
96	11:30	11:30
16	11:30	11:30
241	11:30	11:30
25	11:30	11:30
39	11:30	11:30
105	11:30	11:30
225	11:30	11:30
252	11:45	11:45
130	11:45	11:45
31	11:45	11:45
170	11:45	11:45
237	11:45	11:45
53	11:45	11:45
155	11:45	11:45
258	11:45	11:45



**NEM Successor Tariff Proposal, R.14-07-002  
(Fang) Workpapers - September 30, 2015**

Circuit Observation #	Peak Interval	Time Formatted
260	11:45	11:45
407	12:00	12:00
166	12:00	12:00
193	12:00	12:00
151	12:00	12:00
208	12:00	12:00
618	12:00	12:00
50	12:15	12:15
34	12:15	12:15
43	12:15	12:15
246	12:15	12:15
247	12:15	12:15
48	12:15	12:15
231	12:15	12:15
192	12:30	12:30
317	12:30	12:30
452	12:30	12:30
194	12:30	12:30
195	12:30	12:30
89	12:30	12:30
176	12:30	12:30
54	12:30	12:30
184	12:30	12:30
46	12:45	12:45
87	12:45	12:45
20	12:45	12:45
40	12:45	12:45
38	12:45	12:45
111	12:45	12:45
67	12:45	12:45
80	12:45	12:45
213	12:45	12:45
182	12:45	12:45
228	12:45	12:45
51	13:00	13:00
65	13:00	13:00
122	13:00	13:00
240	13:00	13:00
42	13:00	13:00
44	13:00	13:00
49	13:15	13:15
95	13:15	13:15
190	13:15	13:15
165	13:15	13:15
514	13:15	13:15
33	13:15	13:15

**NEM Successor Tariff Proposal, R.14-07-002  
(Fang) Workpapers - September 30, 2015**

Circuit Observation #	Peak Interval	Time Formatted
169	13:15	13:15
26	13:15	13:15
78	13:15	13:15
30	13:15	13:15
81	13:15	13:15
138	13:15	13:15
57	13:15	13:15
36	13:15	13:15
336	13:30	13:30
24	13:30	13:30
108	13:30	13:30
58	13:30	13:30
98	13:30	13:30
47	13:30	13:30
128	13:30	13:30
99	13:30	13:30
150	13:30	13:30
52	13:30	13:30
202	13:30	13:30
152	13:30	13:30
74	13:30	13:30
118	13:30	13:30
68	13:30	13:30
76	13:30	13:30
93	13:30	13:30
145	13:30	13:30
107	13:30	13:30
115	13:30	13:30
86	13:45	13:45
126	13:45	13:45
196	13:45	13:45
90	13:45	13:45
66	13:45	13:45
112	13:45	13:45
92	13:45	13:45
114	13:45	13:45
135	13:45	13:45
13	13:45	13:45
101	13:45	13:45
120	13:45	13:45
267	13:45	13:45
191	14:00	14:00
125	14:00	14:00
167	14:00	14:00
172	14:00	14:00
201	14:00	14:00

**NEM Successor Tariff Proposal, R.14-07-002  
(Fang) Workpapers - September 30, 2015**

Circuit Observation #	Peak Interval	Time Formatted
207	14:00	14:00
62	14:00	14:00
103	14:00	14:00
55	14:00	14:00
21	14:00	14:00
133	14:00	14:00
302	14:00	14:00
413	14:00	14:00
102	14:00	14:00
79	14:00	14:00
160	14:00	14:00
326	14:00	14:00
106	14:00	14:00
142	14:00	14:00
94	14:00	14:00
232	14:15	14:15
147	14:15	14:15
127	14:15	14:15
110	14:15	14:15
91	14:15	14:15
173	14:15	14:15
204	14:15	14:15
75	14:15	14:15
301	14:15	14:15
116	14:15	14:15
35	14:15	14:15
444	14:15	14:15
70	14:15	14:15
56	14:15	14:15
277	14:15	14:15
119	14:15	14:15
183	14:15	14:15
227	14:15	14:15
3	14:30	14:30
59	14:30	14:30
339	14:30	14:30
149	14:30	14:30
60	14:30	14:30
41	14:30	14:30
171	14:30	14:30
129	14:30	14:30
73	14:30	14:30
153	14:30	14:30
206	14:30	14:30
134	14:30	14:30
175	14:30	14:30

**NEM Successor Tariff Proposal, R.14-07-002  
(Fang) Workpapers - September 30, 2015**

Circuit Observation #	Peak Interval	Time Formatted
154	14:30	14:30
677	14:30	14:30
137	14:30	14:30
136	14:30	14:30
464	14:30	14:30
64	14:30	14:30
179	14:30	14:30
84	14:30	14:30
185	14:30	14:30
459	14:30	14:30
334	14:30	14:30
338	14:45	14:45
124	14:45	14:45
15	14:45	14:45
109	14:45	14:45
61	14:45	14:45
77	14:45	14:45
320	14:45	14:45
69	14:45	14:45
216	14:45	14:45
305	14:45	14:45
540	14:45	14:45
290	14:45	14:45
63	14:45	14:45
329	14:45	14:45
139	14:45	14:45
604	14:45	14:45
188	14:45	14:45
621	14:45	14:45
235	15:00	15:00
683	15:00	15:00
378	15:00	15:00
244	15:00	15:00
113	15:00	15:00
215	15:00	15:00
82	15:00	15:00
159	15:00	15:00
492	15:00	15:00
224	15:00	15:00
394	15:00	15:00
85	15:00	15:00
549	15:00	15:00
162	15:00	15:00
377	15:00	15:00
37	15:15	15:15
236	15:15	15:15

**NEM Successor Tariff Proposal, R.14-07-002  
(Fang) Workpapers - September 30, 2015**

Circuit Observation #	Peak Interval	Time Formatted
174	15:15	15:15
325	15:15	15:15
257	15:15	15:15
212	15:15	15:15
331	15:15	15:15
550	15:15	15:15
187	15:15	15:15
648	15:15	15:15
123	15:30	15:30
292	15:30	15:30
572	15:30	15:30
519	15:30	15:30
197	15:30	15:30
520	15:30	15:30
298	15:30	15:30
341	15:30	15:30
318	15:30	15:30
88	15:30	15:30
345	15:30	15:30
299	15:30	15:30
205	15:30	15:30
414	15:30	15:30
157	15:30	15:30
218	15:30	15:30
141	15:30	15:30
245	15:30	15:30
284	15:30	15:30
359	15:30	15:30
222	15:30	15:30
372	15:30	15:30
406	15:30	15:30
71	15:45	15:45
253	15:45	15:45
375	15:45	15:45
19	15:45	15:45
574	15:45	15:45
104	15:45	15:45
117	15:45	15:45
463	15:45	15:45
381	15:45	15:45
307	15:45	15:45
388	15:45	15:45
308	15:45	15:45
143	15:45	15:45
393	15:45	15:45
283	15:45	15:45

**NEM Successor Tariff Proposal, R.14-07-002  
(Fang) Workpapers - September 30, 2015**

Circuit Observation #	Peak Interval	Time Formatted
178	15:45	15:45
140	15:45	15:45
311	15:45	15:45
395	15:45	15:45
433	15:45	15:45
448	15:45	15:45
399	15:45	15:45
401	15:45	15:45
649	15:45	15:45
45	16:00	16:00
189	16:00	16:00
294	16:00	16:00
270	16:00	16:00
412	16:00	16:00
272	16:00	16:00
383	16:00	16:00
255	16:00	16:00
274	16:00	16:00
303	16:00	16:00
209	16:00	16:00
177	16:00	16:00
352	16:00	16:00
262	16:00	16:00
481	16:00	16:00
546	16:00	16:00
356	16:00	16:00
429	16:00	16:00
358	16:00	16:00
161	16:00	16:00
327	16:00	16:00
158	16:00	16:00
219	16:00	16:00
364	16:00	16:00
286	16:00	16:00
328	16:00	16:00
435	16:15	16:15
297	16:15	16:15
522	16:15	16:15
295	16:15	16:15
411	16:15	16:15
131	16:15	16:15
304	16:15	16:15
348	16:15	16:15
351	16:15	16:15
455	16:15	16:15
421	16:15	16:15

**NEM Successor Tariff Proposal, R.14-07-002  
(Fang) Workpapers - September 30, 2015**

Circuit Observation #	Peak Interval	Time Formatted
285	16:15	16:15
249	16:15	16:15
445	16:15	16:15
221	16:15	16:15
211	16:15	16:15
398	16:15	16:15
465	16:15	16:15
558	16:15	16:15
466	16:15	16:15
396	16:15	16:15
266	16:15	16:15
314	16:15	16:15
439	16:15	16:15
370	16:15	16:15
369	16:15	16:15
400	16:15	16:15
371	16:15	16:15
403	16:15	16:15
405	16:15	16:15
434	16:15	16:15
680	16:30	16:30
460	16:30	16:30
627	16:30	16:30
199	16:30	16:30
271	16:30	16:30
524	16:30	16:30
198	16:30	16:30
269	16:30	16:30
380	16:30	16:30
200	16:30	16:30
100	16:30	16:30
346	16:30	16:30
242	16:30	16:30
456	16:30	16:30
259	16:30	16:30
541	16:30	16:30
354	16:30	16:30
539	16:30	16:30
263	16:30	16:30
641	16:30	16:30
144	16:30	16:30
431	16:30	16:30
544	16:30	16:30
315	16:30	16:30
332	16:30	16:30
357	16:30	16:30

**NEM Successor Tariff Proposal, R.14-07-002  
(Fang) Workpapers - September 30, 2015**

Circuit Observation #	Peak Interval	Time Formatted
402	16:30	16:30
373	16:45	16:45
316	16:45	16:45
457	16:45	16:45
238	16:45	16:45
321	16:45	16:45
454	16:45	16:45
322	16:45	16:45
300	16:45	16:45
453	16:45	16:45
281	16:45	16:45
282	16:45	16:45
397	16:45	16:45
287	16:45	16:45
310	16:45	16:45
389	16:45	16:45
497	16:45	16:45
599	16:45	16:45
391	16:45	16:45
505	16:45	16:45
483	16:45	16:45
418	16:45	16:45
366	16:45	16:45
365	16:45	16:45
612	16:45	16:45
368	16:45	16:45
561	16:45	16:45
335	16:45	16:45
229	16:45	16:45
234	17:00	17:00
451	17:00	17:00
340	17:00	17:00
576	17:00	17:00
580	17:00	17:00
409	17:00	17:00
410	17:00	17:00
256	17:00	17:00
323	17:00	17:00
382	17:00	17:00
639	17:00	17:00
353	17:00	17:00
443	17:00	17:00
384	17:00	17:00
584	17:00	17:00
288	17:00	17:00
488	17:00	17:00



**NEM Successor Tariff Proposal, R.14-07-002  
(Fang) Workpapers - September 30, 2015**

Circuit Observation #	Peak Interval	Time Formatted
181	17:00	17:00
417	17:00	17:00
312	17:00	17:00
390	17:00	17:00
83	17:00	17:00
333	17:00	17:00
660	17:00	17:00
500	17:00	17:00
223	17:00	17:00
430	17:00	17:00
404	17:00	17:00
226	17:00	17:00
615	17:00	17:00
543	17:00	17:00
661	17:00	17:00
9	17:15	17:15
374	17:15	17:15
337	17:15	17:15
428	17:15	17:15
529	17:15	17:15
344	17:15	17:15
243	17:15	17:15
475	17:15	17:15
349	17:15	17:15
261	17:15	17:15
537	17:15	17:15
494	17:15	17:15
217	17:15	17:15
676	17:15	17:15
446	17:15	17:15
419	17:15	17:15
313	17:15	17:15
536	17:15	17:15
646	17:15	17:15
362	17:15	17:15
545	17:15	17:15
447	17:15	17:15
230	17:15	17:15
571	17:30	17:30
268	17:30	17:30
425	17:30	17:30
632	17:30	17:30
672	17:30	17:30
575	17:30	17:30
276	17:30	17:30
156	17:30	17:30

**NEM Successor Tariff Proposal, R.14-07-002  
(Fang) Workpapers - September 30, 2015**

Circuit Observation #	Peak Interval	Time Formatted
476	17:30	17:30
278	17:30	17:30
415	17:30	17:30
595	17:30	17:30
684	17:30	17:30
386	17:30	17:30
416	17:30	17:30
665	17:30	17:30
552	17:30	17:30
385	17:30	17:30
420	17:30	17:30
360	17:30	17:30
309	17:30	17:30
265	17:30	17:30
503	17:30	17:30
610	17:30	17:30
289	17:30	17:30
432	17:30	17:30
556	17:30	17:30
603	17:30	17:30
608	17:30	17:30
163	17:45	17:45
251	17:45	17:45
471	17:45	17:45
624	17:45	17:45
343	17:45	17:45
477	17:45	17:45
254	17:45	17:45
132	17:45	17:45
659	17:45	17:45
350	17:45	17:45
535	17:45	17:45
596	17:45	17:45
355	17:45	17:45
214	17:45	17:45
387	17:45	17:45
392	17:45	17:45
438	17:45	17:45
367	17:45	17:45
647	17:45	17:45
10	18:00	18:00
121	18:00	18:00
293	18:00	18:00
424	18:00	18:00
470	18:00	18:00
408	18:00	18:00

**NEM Successor Tariff Proposal, R.14-07-002  
(Fang) Workpapers - September 30, 2015**

Circuit Observation #	Peak Interval	Time Formatted
342	18:00	18:00
296	18:00	18:00
239	18:00	18:00
530	18:00	18:00
526	18:00	18:00
273	18:00	18:00
449	18:00	18:00
280	18:00	18:00
306	18:00	18:00
533	18:00	18:00
489	18:00	18:00
548	18:00	18:00
642	18:00	18:00
619	18:00	18:00
620	18:00	18:00
542	18:00	18:00
622	18:15	18:15
291	18:15	18:15
462	18:15	18:15
347	18:15	18:15
479	18:15	18:15
440	18:15	18:15
513	18:30	18:30
458	18:30	18:30
186	18:30	18:30
685	19:00	19:00
534	19:15	19:15
427	19:30	19:30
555	19:30	19:30
422	19:30	19:30
72	19:45	19:45
436	19:45	19:45
511	19:45	19:45
512	19:45	19:45
426	19:45	19:45
516	19:45	19:45
518	19:45	19:45
515	19:45	19:45
586	19:45	19:45
523	19:45	19:45
578	19:45	19:45
579	19:45	19:45
527	19:45	19:45
631	19:45	19:45
633	19:45	19:45
496	19:45	19:45

**NEM Successor Tariff Proposal, R.14-07-002  
(Fang) Workpapers - September 30, 2015**

Circuit Observation #	Peak Interval	Time Formatted
643	19:45	19:45
484	19:45	19:45
480	19:45	19:45
248	19:45	19:45
644	19:45	19:45
363	19:45	19:45
495	19:45	19:45
686	19:45	19:45
493	19:45	19:45
501	19:45	19:45
498	19:45	19:45
616	19:45	19:45
601	19:45	19:45
553	19:45	19:45
678	20:00	20:00
662	20:00	20:00
651	20:00	20:00
441	20:00	20:00
509	20:00	20:00
663	20:00	20:00
567	20:00	20:00
653	20:00	20:00
472	20:00	20:00
652	20:00	20:00
630	20:00	20:00
473	20:00	20:00
626	20:00	20:00
573	20:00	20:00
628	20:00	20:00
655	20:00	20:00
583	20:00	20:00
478	20:00	20:00
499	20:00	20:00
482	20:00	20:00
485	20:00	20:00
531	20:00	20:00
581	20:00	20:00
582	20:00	20:00
279	20:00	20:00
474	20:00	20:00
637	20:00	20:00
264	20:00	20:00
532	20:00	20:00
687	20:00	20:00
324	20:00	20:00
490	20:00	20:00

**NEM Successor Tariff Proposal, R.14-07-002  
(Fang) Workpapers - September 30, 2015**

Circuit Observation #	Peak Interval	Time Formatted
658	20:00	20:00
487	20:00	20:00
614	20:00	20:00
486	20:00	20:00
590	20:00	20:00
589	20:00	20:00
506	20:00	20:00
538	20:00	20:00
668	20:00	20:00
330	20:00	20:00
361	20:00	20:00
613	20:00	20:00
502	20:00	20:00
606	20:00	20:00
554	20:00	20:00
507	20:00	20:00
504	20:00	20:00
605	20:00	20:00
609	20:00	20:00
560	20:00	20:00
645	20:00	20:00
562	20:00	20:00
250	20:15	20:15
508	20:15	20:15
563	20:15	20:15
565	20:15	20:15
564	20:15	20:15
688	20:15	20:15
566	20:15	20:15
569	20:15	20:15
468	20:15	20:15
521	20:15	20:15
275	20:15	20:15
629	20:15	20:15
577	20:15	20:15
635	20:15	20:15
591	20:15	20:15
640	20:15	20:15
654	20:15	20:15
528	20:15	20:15
634	20:15	20:15
587	20:15	20:15
636	20:15	20:15
1	20:15	20:15
617	20:15	20:15
602	20:15	20:15

**NEM Successor Tariff Proposal, R.14-07-002  
(Fang) Workpapers - September 30, 2015**

Circuit Observation #	Peak Interval	Time Formatted
607	20:15	20:15
666	20:15	20:15
588	20:15	20:15
594	20:15	20:15
597	20:15	20:15
593	20:15	20:15
547	20:15	20:15
592	20:15	20:15
598	20:15	20:15
557	20:15	20:15
673	20:15	20:15
611	20:15	20:15
650	20:30	20:30
233	20:30	20:30
423	20:30	20:30
623	20:30	20:30
656	20:30	20:30
664	20:30	20:30
442	20:30	20:30
525	20:30	20:30
585	20:30	20:30
491	20:30	20:30
600	20:30	20:30
638	20:30	20:30
551	20:30	20:30
559	20:30	20:30
568	20:45	20:45
510	20:45	20:45
670	20:45	20:45
517	20:45	20:45
625	20:45	20:45
657	20:45	20:45
667	21:00	21:00
675	21:15	21:15
671	21:15	21:15
674	21:30	21:30
679	22:45	22:45
5	23:00	23:00
12	23:00	23:00
682	23:00	23:00

**NEM Successor Tariff Proposal, R.14-07-002  
(Fang) Workpapers - September 30, 2015**

	<b>Peak Day</b>	<b>Summer Day</b>	<b>Peak and Summer</b>
TOTAL ALL	<b>682</b>		<b>55%</b>
11am-6pm	9/16/2014	9/9/2014	378
	Circuit Observation #		Match = 1
	27	148	0
	28	220	0
	29	669	1
	30	29	1
	31	469	1
	32	168	1
	33	32	1
	34	96	1
	35	16	1
	36	241	1
	37	25	1
	38	39	1
	39	105	1
	40	225	1
	41	252	1
	42	130	1
	43	31	1
	44	170	1
	45	237	1
	46	53	1
	47	155	1
	48	258	1
	49	260	1
	50	407	1
	51	166	1
	52	193	1
	53	151	1
	54	208	1
	55	618	1
	56	50	1
	57	34	1
	58	43	1
	59	246	1
	60	247	1
	61	48	1
	62	231	1
	63	192	1
	64	317	1
	65	452	1
	66	194	1
	67	195	1

**NEM Successor Tariff Proposal, R.14-07-002  
(Fang) Workpapers - September 30, 2015**

	<b>Peak Day</b>	<b>Summer Day</b>	<b>Peak and Summer</b>
TOTAL ALL	<b>682</b>		<b>55%</b>
11am-6pm	9/16/2014	9/9/2014	378
	Circuit Observation #		Match = 1
	68	89	1
	69	176	1
	70	54	1
	71	184	1
	72	46	0
	73	87	1
	74	20	1
	75	40	1
	76	38	1
	77	111	1
	78	67	1
	79	80	1
	80	213	1
	81	182	1
	82	228	1
	83	51	1
	84	65	1
	85	122	1
	86	240	1
	87	42	1
	88	44	1
	89	49	1
	90	95	1
	91	190	1
	92	165	1
	93	514	1
	94	33	1
	95	169	1
	96	26	1
	97	78	0
	98	30	1
	99	81	1
	100	138	1
	101	57	1
	102	36	1
	103	336	1
	104	24	1
	105	108	1
	106	58	1
	107	98	1
	108	47	1
	109	128	1



**NEM Successor Tariff Proposal, R.14-07-002  
(Fang) Workpapers - September 30, 2015**

	<b>Peak Day</b>	<b>Summer Day</b>	<b>Peak and Summer</b>
TOTAL ALL	<b>682</b>		<b>55%</b>
11am-6pm	9/16/2014	9/9/2014	378
	Circuit Observation #		Match = 1
	110	99	1
	111	150	1
	112	52	1
	113	202	1
	114	152	1
	115	74	1
	116	118	1
	117	68	1
	118	76	1
	119	93	1
	120	145	1
	121	107	0
	122	115	1
	123	86	1
	124	126	1
	125	196	1
	126	90	1
	127	66	1
	128	112	1
	129	92	1
	130	114	1
	131	135	1
	132	13	1
	133	101	1
	134	120	1
	135	267	1
	136	191	1
	137	125	1
	138	167	1
	139	172	1
	140	201	1
	141	207	1
	142	62	1
	143	103	1
	144	55	1
	145	21	1
	146	133	0
	147	302	1
	148	413	1
	149	102	1
	150	79	1
	151	160	1

**NEM Successor Tariff Proposal, R.14-07-002  
(Fang) Workpapers - September 30, 2015**

	<b>Peak Day</b>	<b>Summer Day</b>	<b>Peak and Summer</b>
TOTAL ALL	<b>682</b>		<b>55%</b>
11am-6pm	9/16/2014	9/9/2014	378
	Circuit Observation #		Match = 1
	152	326	1
	153	106	1
	154	142	1
	155	94	1
	156	232	1
	157	147	1
	158	127	1
	159	110	1
	160	91	1
	161	173	1
	162	204	1
	163	75	1
	164	301	0
	165	116	1
	166	35	1
	167	444	1
	168	70	1
	169	56	1
	170	277	1
	171	119	1
	172	183	1
	173	227	1
	174	3	1
	175	59	1
	176	339	1
	177	149	1
	178	60	1
	179	41	1
	180	171	0
	181	129	1
	182	73	1
	183	153	1
	184	206	1
	185	134	1
	186	175	0
	187	154	1
	188	677	1
	189	137	1
	190	136	1
	191	464	1
	192	64	1
	193	179	1

**NEM Successor Tariff Proposal, R.14-07-002  
(Fang) Workpapers - September 30, 2015**

	<b>Peak Day</b>	<b>Summer Day</b>	<b>Peak and Summer</b>
TOTAL ALL	<b>682</b>		<b>55%</b>
11am-6pm	9/16/2014	9/9/2014	378
	Circuit Observation #		Match = 1
	194	84	1
	195	185	1
	196	459	1
	197	334	1
	198	338	1
	199	124	1
	200	15	1
	201	109	1
	202	61	1
	203	77	0
	204	320	1
	205	69	1
	206	216	1
	207	305	1
	208	540	1
	209	290	1
	210	63	0
	211	329	1
	212	139	1
	213	604	1
	214	188	1
	215	621	1
	216	235	1
	217	683	1
	218	378	1
	219	244	1
	220	113	1
	221	215	1
	222	82	1
	223	159	1
	224	492	1
	225	224	1
	226	394	1
	227	85	1
	228	549	1
	229	162	1
	230	377	1
	231	37	1
	232	236	1
	233	174	0
	234	325	1
	235	257	1

**NEM Successor Tariff Proposal, R.14-07-002  
(Fang) Workpapers - September 30, 2015**

	<b>Peak Day</b>	<b>Summer Day</b>	<b>Peak and Summer</b>
TOTAL ALL	<b>682</b>		<b>55%</b>
11am-6pm	9/16/2014	9/9/2014	378
	Circuit Observation #		Match = 1
	236	212	1
	237	331	1
	238	550	1
	239	187	0
	240	648	1
	241	123	1
	242	292	1
	243	572	1
	244	519	1
	245	197	1
	246	520	1
	247	298	1
	248	341	0
	249	318	1
	250	88	0
	251	345	1
	252	299	1
	253	205	1
	254	414	1
	255	157	1
	256	218	1
	257	141	1
	258	245	1
	259	284	1
	260	359	1
	261	222	1
	262	372	1
	263	406	1
	264	71	0
	265	253	1
	266	375	1
	267	19	1
	268	574	1
	269	104	1
	270	117	1
	271	463	1
	272	381	1
	273	307	0
	274	388	1
	275	308	0
	276	143	1
	277	393	1

**NEM Successor Tariff Proposal, R.14-07-002  
(Fang) Workpapers - September 30, 2015**

	<b>Peak Day</b>	<b>Summer Day</b>	<b>Peak and Summer</b>
TOTAL ALL	<b>682</b>		<b>55%</b>
11am-6pm	9/16/2014	9/9/2014	378
	Circuit Observation #		Match = 1
	278	283	1
	279	178	0
	280	140	0
	281	311	1
	282	395	1
	283	433	1
	284	448	1
	285	399	1
	286	401	1
	287	649	1
	288	45	1
	289	189	1
	290	294	1
	291	270	0
	292	412	1
	293	272	0
	294	383	1
	295	255	1
	296	274	0
	297	303	1
	298	209	1
	299	177	1
	300	352	1
	301	262	1
	302	481	1
	303	546	1
	304	356	1
	305	429	1
	306	358	0
	307	161	1
	308	327	1
	309	158	1
	310	219	1
	311	364	1
	312	286	1
	313	328	1
	314	435	1
	315	297	1
	316	522	1
	317	295	1
	318	411	1
	319	131	0

**NEM Successor Tariff Proposal, R.14-07-002  
(Fang) Workpapers - September 30, 2015**

	<b>Peak Day</b>	<b>Summer Day</b>	<b>Peak and Summer</b>
TOTAL ALL	<b>682</b>		<b>55%</b>
11am-6pm	9/16/2014	9/9/2014	378
	Circuit Observation #		Match = 1
	320	304	1
	321	348	1
	322	351	1
	323	455	1
	324	421	0
	325	285	1
	326	249	1
	327	445	1
	328	221	1
	329	211	1
	330	398	0
	331	465	1
	332	558	1
	333	466	1
	334	396	1
	335	266	1
	336	314	1
	337	439	1
	338	370	1
	339	369	1
	340	400	1
	341	371	1
	342	403	0
	343	405	1
	344	434	1
	345	680	1
	346	460	1
	347	627	0
	348	199	1
	349	271	1
	350	524	1
	351	198	1
	352	269	1
	353	380	1
	354	200	1
	355	100	1
	356	346	1
	357	242	1
	358	456	1
	359	259	1
	360	541	1
	361	354	0

**NEM Successor Tariff Proposal, R.14-07-002  
(Fang) Workpapers - September 30, 2015**

	<b>Peak Day</b>	<b>Summer Day</b>	<b>Peak and Summer</b>
TOTAL ALL	<b>682</b>		<b>55%</b>
11am-6pm	9/16/2014	9/9/2014	378
	Circuit Observation #		Match = 1
	362	539	1
	363	263	0
	364	641	1
	365	144	1
	366	431	1
	367	544	1
	368	315	1
	369	332	1
	370	357	1
	371	402	1
	372	373	1
	373	316	1
	374	457	1
	375	238	1
	376	321	0
	377	454	1
	378	322	1
	379	300	0
	380	453	1
	381	281	1
	382	282	1
	383	397	1
	384	287	1
	385	310	1
	386	389	1
	387	497	1
	388	599	1
	389	391	1
	390	505	1
	391	483	1
	392	418	1
	393	366	1
	394	365	1
	395	612	1
	396	368	1
	397	561	1
	398	335	1
	399	229	1
	400	234	1
	401	451	1
	402	340	1
	403	576	1

**NEM Successor Tariff Proposal, R.14-07-002  
(Fang) Workpapers - September 30, 2015**

	<b>Peak Day</b>	<b>Summer Day</b>	<b>Peak and Summer</b>
TOTAL ALL	<b>682</b>		<b>55%</b>
11am-6pm	9/16/2014	9/9/2014	378
	Circuit Observation #		Match = 1
	404	580	1
	405	409	1
	406	410	1
	407	256	1
	408	323	0
	409	382	1
	410	639	1
	411	353	1
	412	443	1
	413	384	1
	414	584	1
	415	288	1
	416	488	1
	417	181	1
	418	417	1
	419	312	1
	420	390	1
	421	83	1
	422	333	0
	423	660	0
	424	500	0
	425	223	1
	426	430	0
	427	404	0
	428	226	1
	429	615	1
	430	543	1
	431	661	1
	432	9	1
	433	374	1
	434	337	1
	435	428	1
	436	529	0
	437	344	0
	438	243	1
	439	475	1
	440	349	0
	441	261	0
	442	537	0
	443	494	1
	444	217	1
	445	676	1



**NEM Successor Tariff Proposal, R.14-07-002  
(Fang) Workpapers - September 30, 2015**

	<b>Peak Day</b>	<b>Summer Day</b>	<b>Peak and Summer</b>
TOTAL ALL	<b>682</b>		<b>55%</b>
11am-6pm	9/16/2014	9/9/2014	378
	Circuit Observation #		Match = 1
	446	446	1
	447	419	1
	448	313	1
		536	0
		646	0
		362	0
		545	0
		447	0
		230	0
		571	0
		268	0
		425	0
		632	0
		672	0
		575	0
		276	0
		156	0
		476	0
		278	0
		415	0
		595	0
		684	0
		386	0
		416	0
		665	0
		552	0
		385	0
		420	0
		360	0
		309	0
		265	0
		503	0
		610	0
		289	0
		432	0
		556	0
		603	0
		608	0
		163	0
		251	0
		471	0
		624	0

**NEM Successor Tariff Proposal, R.14-07-002  
(Fang) Workpapers - September 30, 2015**

	<b>Peak Day</b>	<b>Summer Day</b>	<b>Peak and Summer</b>
TOTAL ALL	<b>682</b>		<b>55%</b>
11am-6pm	9/16/2014	9/9/2014	378
	Circuit Observation #		Match = 1
		343	0
		477	0
		254	0
		132	0
		659	0
		350	0
		535	0
		596	0
		355	0
		214	0
		387	0
		392	0
		438	0
		367	0
		647	0

***NEM Cost Shift***

# NEM Successor Tariff Proposal, R.14-07-002 (Fang) Workpapers - September 30, 2015

	<b>Tab Name</b>	<b>Description</b>
1	"Cost Shift Estimates"	Calculation of Residential and summary of Non-Residential cost shift estimates
2	"@ % Cap MW & Non-Res Cost Shift"	Calculation of NEM MW & kWh at % of aggregate demand and non-residential cost shift estimates
3	"ORA's ICF Calc"	Calculation of \$'s collected by ORA's ICF proposal and % of cost shift collected
4	"Solar Inputs"	NEM MW by class-type and capacity factor by class-type
5	"Non-Res Rates and Avoided Cost"	Non-Residential Rates effective 5-1-2015 and avoided cost estimate
6	"Res PV-Gen Assumptions"	Residential assumptions for generation offset by tier

**NEM Successor Tariff Proposal, R.14-07-002  
(Fang) Workpapers - September 30, 2015**

	<b>5-1-2015 Rates</b>	<b>Final RROIR Decision 2019</b>
<b>Summer Energy (cents/kWh)</b>		
0 to 100% of Baseline	17.4	24.1
100 to 130% of Baseline	20.5	24.1
130 to 200% of Baseline	40.4	30.2
200 to 400% of Baseline	42.4	30.2
Above 400% of Baseline	42.4	52.9
<b>Winter Energy (cents/kWh)</b>		
0 to 100% of Baseline	17.4	21.3
100 to 130% of Baseline	20.5	21.3
130 to 200% of Baseline	36.8	26.7
200 to 400% of Baseline	38.8	26.7
Above 400% of Baseline	38.8	46.7

Effective \$/kWh Savings for PV-Gen      32.0      28.1

<b>RESIDENTIAL (5-1-2015 for June 2015 MW and 2019 RROIR Rates for all other)</b>		<b>\$ Millions</b>
June 2015	\$117,917,870	\$118
@ 5% Cap		\$161
@ 6% Cap		\$196
@ 7% Cap		\$232
@ 8% Cap		\$267

	<b>Cost Shift</b>	<b>Cumulative</b>	<b>\$ Millions</b>
Added After 5%	\$37,622,591	\$37,622,591	\$38
Added After 6%	\$37,622,591	\$75,245,183	\$75
Added After 7%	\$37,622,591	\$112,867,774	\$113
Cost Shift per Res kW	\$412		
Rounded	\$400		
Per 4kW	\$1,600		
Per Month	\$133		
Per Month Rounded	\$130		

**NON-RESIDENTIAL (Current 5/1/2015 Rates)**

June 2015	\$12,630,277	\$13
@ 5% Cap	\$16,367,970	\$16
@ 6% Cap	\$18,501,736	\$19
@ 7% Cap	\$20,635,502	\$21
@ 8% Cap	\$22,769,268	\$23

<b>TOTAL</b>		
June 2015	\$130,548,147	\$131
@ 5% Cap	\$177,084,769	\$177
@ 6% Cap	\$214,707,361	\$215
@ 7% Cap	\$252,329,952	\$252
@ 8% Cap	\$289,952,544	\$290

**NEM Successor Tariff Proposal, R.14-07-002  
(Fang) Workpapers - September 30, 2015**

	5%	6%	7%	8%	
NEM Cap kW	607,000	728,400	849,800	971,200	Input - Calc
Current Res kW	286,556	286,556	286,556	286,556	Input - Linked
Current Non-Res kW	107,789	107,789	107,789	107,789	Input - Linked
Current Total kW	394,345	394,345	394,345	394,345	Calc
kW Left to Cap	212,655	334,055	455,455	576,855	Calc
% Res	85%	85%	85%	85%	Input
% Non-Res	15%	15%	15%	15%	Calc
Added Res	180,757	283,947	387,137	490,327	Calc
Added Non-Res	31,898	50,108	68,318	86,528	Calc
Total Res at Cap	467,312	570,502	673,692	776,882	Calc
Total non-Res at Cap	139,688	157,898	176,108	194,318	Calc
Total at Cap	607,000	728,400	849,800	971,200	Calc
Total at Cap MW	607	728	850	971	

From Above

kW: Calculated from Grouping kW per Schedule

Month End	Res	Non-Res	Residential	Sm Commercial	C&I "Standard"	C&I "Solar"	Ag "Large"	Ag "Small"
June 2015	286,556	107,789	286,556	5,779	60,607	33,548	3,742	4,112
@ 5% Cap	467,312	139,688	467,312	7,489	78,543	43,476	4,850	5,329
@ 6% Cap	570,502	157,898	570,502	8,466	88,782	49,144	5,482	6,024
@ 7% Cap	673,692	176,108	673,692	9,442	99,021	54,812	6,114	6,719
@ 8% Cap	776,882	194,318	776,882	10,418	109,260	60,479	6,746	7,414
<b>Added after Cap</b>								
@ 6% Cap	103,190	18,210	103,190	976	10,239	5,668	632	695
@ 7% Cap	103,190	18,210	103,190	976	10,239	5,668	632	695
@ 8% Cap	103,190	18,210	103,190	976	10,239	5,668	632	695

kWh: Calculated from Capacity Factor Assumption

	Residential	Sm Commercial	C&I "Standard"	C&I "Solar"	Ag "Large"	Ag "Small"
June 2015	499,535,184	10,327,359	108,307,942	59,952,047	6,687,609	7,349,012
@ 5% Cap	814,637,581	13,383,548	140,359,645	77,693,730	8,666,681	9,523,815
@ 6% Cap	994,522,517	15,128,257	158,657,248	87,822,061	9,796,489	10,765,361
@ 7% Cap	1,174,407,452	16,872,967	176,954,851	97,950,393	10,926,297	12,006,907
@ 8% Cap	1,354,292,388	18,617,677	195,252,453	108,078,724	12,056,106	13,248,453
<b>Added after Cap</b>						
@ 6% Cap	179,884,936	1,744,710	18,297,603	10,128,331	1,129,808	1,241,546
@ 7% Cap	179,884,936	1,744,710	18,297,603	10,128,331	1,129,808	1,241,546
@ 8% Cap	179,884,936	1,744,710	18,297,603	10,128,331	1,129,808	1,241,546

Non-Residential Cost Shift Estimate

	Sm Commercial	C&I "Standard"	C&I "Solar"	Ag "Large"	Ag "Small"	Non-Res Total
June 2015	\$1,664,197	\$1,891,274	\$8,370,920	\$78,953	\$624,932	\$12,630,277
@ 5% Cap	\$2,156,685	\$2,450,961	\$10,848,137	\$102,318	\$809,869	\$16,367,970
@ 6% Cap	\$2,437,835	\$2,770,474	\$12,262,325	\$115,657	\$915,446	\$18,501,736
@ 7% Cap	\$2,718,985	\$3,089,987	\$13,676,513	\$128,995	\$1,021,022	\$20,635,502
@ 8% Cap	\$3,000,136	\$3,409,499	\$15,090,700	\$142,334	\$1,126,599	\$22,769,268
<b>Added after Cap</b>						
@ 6% Cap	\$281,150	\$319,513	\$1,414,188	\$13,338	\$105,576	\$2,133,766
@ 7% Cap	\$281,150	\$319,513	\$1,414,188	\$13,338	\$105,576	\$2,133,766
@ 8% Cap	\$281,150	\$319,513	\$1,414,188	\$13,338	\$105,576	\$2,133,766

**NEM Successor Tariff Proposal, R.14-07-002  
(Fang) Workpapers - September 30, 2015**

ORA's ICF	Res kW	ORA's ICF	Total Collected	Cumulative	Incremental Cost Shift	Cumulative Cost Shift	% Recovered in ORA's ICF	Cumulative % Recovered in ORA's ICF
Added between 5% and 6%	103,190	\$2	\$2,476,560	\$2,476,560	\$37,622,591	\$37,622,591	7%	7%
Added between 6% and 7%	103,190	\$5	\$6,191,400	\$8,667,960	\$37,622,591	\$75,245,183	16%	12%
Added between 7% and 8%	103,190	\$10	\$12,382,800	\$21,050,760	\$37,622,591	\$112,867,774	33%	19%
		\$ Millions	\$2.5	\$2.5	\$37.6	\$38		
			\$6.2	\$8.7	\$37.6	\$75		
			\$12.4	\$21.1	\$37.6	\$113		

**NEM Successor Tariff Proposal, R.14-07-002  
(Fang) Workpapers - September 30, 2015**

**End of 2014 Capacity by Class**

	<b>kW</b>	<b>% Total</b>	<b>% Non-Res</b>
Residential	221,173	65.9%	NA
Sm Commercial	6,134	1.8%	5.4%
C&I "Standard"	64,333	19.2%	56.2%
C&I "Solar"	35,610	10.6%	31.1%
Ag "Large"	3,972	1.2%	3.5%
Ag "Small"	4,365	1.3%	3.8%
Lighting	0	0.0%	0.0%
<b>TOTAL</b>	<b>335,587</b>	<b>100.0%</b>	<b>100.0%</b>

**Capacity Factor**

Residential	19.9%
Sm Commercial	20.4%
C&I "Standard"	20.4%
C&I "Solar"	20.4%
Ag "Large"	20.4%
Ag "Small"	20.4%
Lighting	20.4%

(E3 Chart Below)

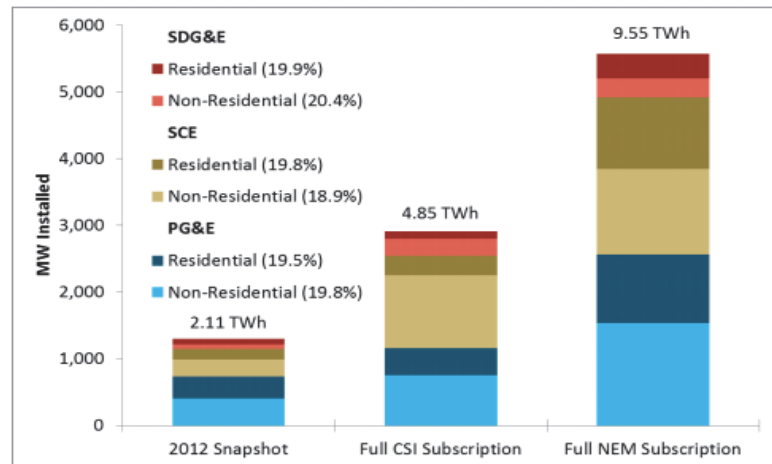
**Gen by Season**

Summer	53.0%
Winter	47.0%
<b>TOTAL</b>	<b>100.0%</b>

NEM Report Page 29

<http://www.cpuc.ca.gov/NR/rdonlyres/75573B69-D5C8-45D3-BE22-3074EAB16D87/0/NEI>

**Figure 5: Installed DG Capacity by IOU and Customer Class at Each Penetration Level**





**NEM Successor Tariff Proposal, R.14-07-002  
(Fang) Workpapers - September 30, 2015**

[MReport.pdf](#)

**NEM Successor Tariff Proposal, R.14-07-002  
(Fang) Workpapers - September 30, 2015**

5/1/2015 Rates <sup>1</sup>	TRANS. BASE	TRANS. BA	DIST. BASE	DIST. PROGRAMS	PPP	ND	CTC	LGC	RS	DWR BOND	DWR CREDIT	Total	+ Commodity
Sm Commercial	0.04256	(0.01419)	0.08320	0.00369	0.01581	0.00041	0.00114	0.00039	0.00027	0.00526	(0.00239)	0.13615	0.24493
C&I "Standard"	0.00000	(0.01419)	0.00000	0.00280	0.01219	0.00041	0.00088	0.00030	0.00005	0.00526	(0.00239)	0.00531	0.10124
C&I "Solar"	0.00000	(0.01419)	0.04734	0.00280	0.01219	0.00041	0.00088	0.00030	0.00005	0.00526	(0.00239)	0.05265	0.22341
Ag "Large"	0.00000	(0.01419)	0.00000	0.00280	0.01219	0.00041	0.00061	0.00030	0.00005	0.00526	(0.00239)	0.00504	0.09559
Ag "Small"	0.02110	(0.01419)	0.04146	0.00354	0.01504	0.00041	0.00061	0.00039	0.00016	0.00526	(0.00239)	0.07139	0.16882

Commodity	Residential	Sm Commercial	C&I "Standard"	C&I "Solar"	Ag "Large"	Ag "Small"	Generation
<b>Summer</b>							
On-Peak	0.14226	0.14076	0.11940	0.33344	0.11167	0.11527	29%
Semi-Peak	0.14226	0.14076	0.10954	0.16735	0.10561	0.11527	9%
Off-Peak	0.14226	0.14076	0.07838	0.13406	0.07236	0.11527	16%
<b>Winter</b>							
On-Peak	0.07261	0.07275	0.10752	0.10752	0.10245	0.07733	0%
Semi-Peak	0.07261	0.07275	0.09174	0.09174	0.08741	0.07733	32%
Off-Peak	0.07261	0.07275	0.07001	0.07001	0.06670	0.07733	15%
Avg. EECC	0.10951	0.10878	0.09593	0.17076	0.09055	0.09743	100%

**Avoided Cost of PV-Generation**  
TOTAL per kWh 0.08378

<sup>1</sup>Advice Letter 2733-E

**NEM Successor Tariff Proposal, R.14-07-002  
(Fang) Workpapers - September 30, 2015**

Summer	53.0%
Winter	47.0%
Capacity Factor	19.9%
Avoided Cost	0.08378

Tier 1	27%
Tier 2	10%
Tier 3	23%
Tier 4	32%
SUE	8%

<b>June 2015</b>	<b>286,556</b>
kWh Gen	499,535,184
<b>@ 5% Cap</b>	<b>467,312</b>
kWh Gen	814,637,581
<b>@ 6% Cap</b>	<b>570,502</b>
kWh Gen @ Cap	994,522,517
<b>@ 7% Cap</b>	<b>673,692</b>
kWh Gen	1,174,407,452
<b>@ 8% Cap</b>	<b>776,882</b>
kWh Gen @ Cap	1,354,292,388

Effective Generation by Tier/Season

<b>Summer Energy</b>	
Tier 1	14%
Tier 2	5%
Tier 3	12%
Tier 4	17%
SUE	4%
<b>Winter Energy</b>	
Tier 1	12%
Tier 2	5%
Tier 3	11%
Tier 4	15%
SUE	4%