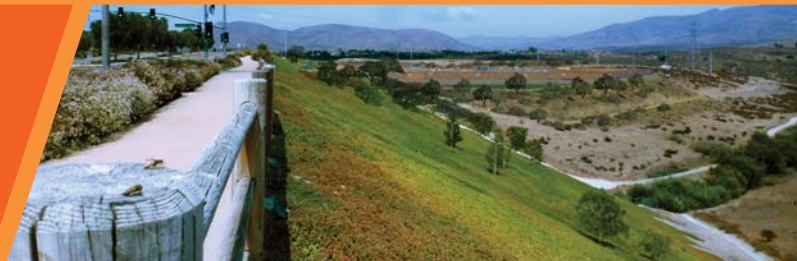
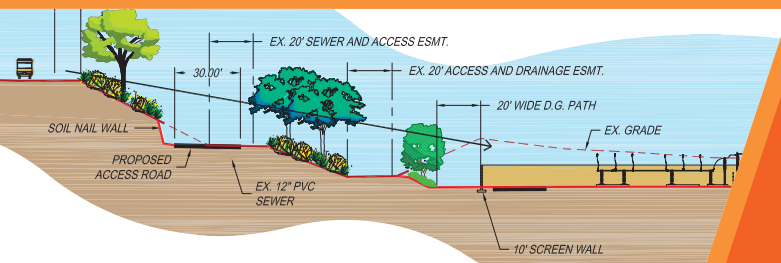


Proponent's Environmental Assessment for the

Salt Creek Substation Project

Application 13-09-xxxx
Volume II of II, Part A: PEA

September 2013



Submitted by



PROPONENT'S ENVIRONMENTAL ASSESSMENT

FOR THE

SALT CREEK SUBSTATION PROJECT

APPLICATION 13-09-xxxx

VOLUME II OF II, Part A: PEA

SEPTEMBER 2013



SAN DIEGO GAS & ELECTRIC COMPANY
101 ASH STREET, HQ12B
SAN DIEGO, CA 92101
TEL: (619) 699-5162
FAX: (619) 699-5027

