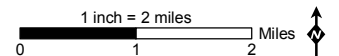
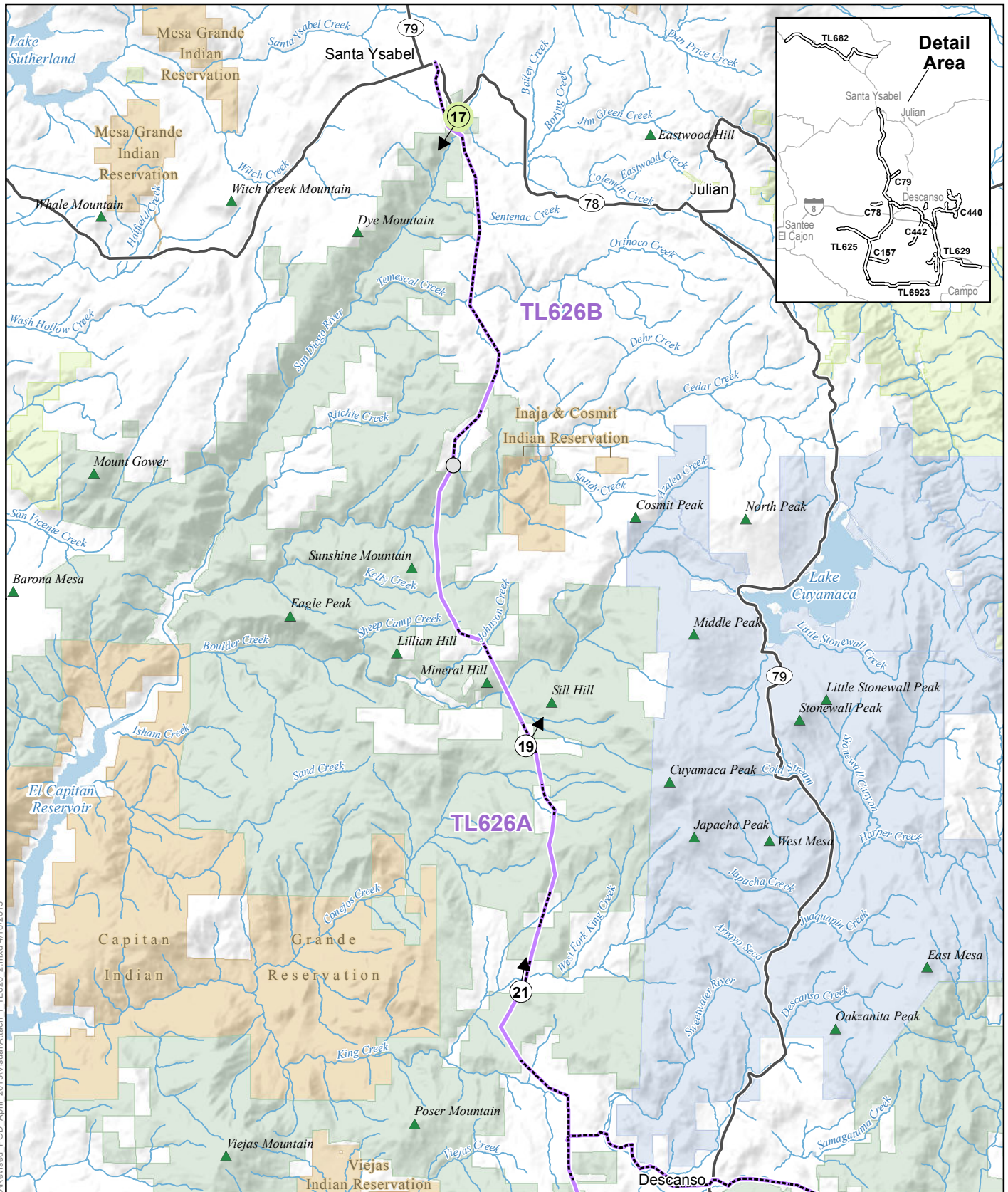


Attachment I: Visual Simulations (TL625 - Sheet 1 of 11)

CNF Revised Plan of Development

- | | | |
|--|---|--------------------------|
| Wood-to-Steel Replacement | United States Forest Service | Interstate |
| Connected Actions Shown with Dashed Line | Bureau of Land Management | Major Road/State Highway |
| Simulation Viewpoint, Proposed Action | Bureau of Indian Affairs | Stream |
| Simulation Viewpoint, Connected Action | California Department of Parks and Recreation | Lake |
| | | Segment Break |





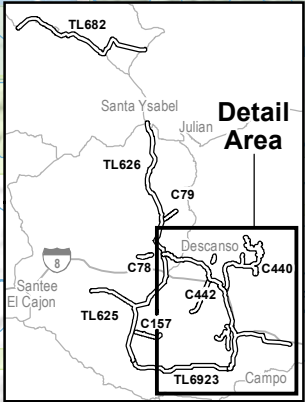
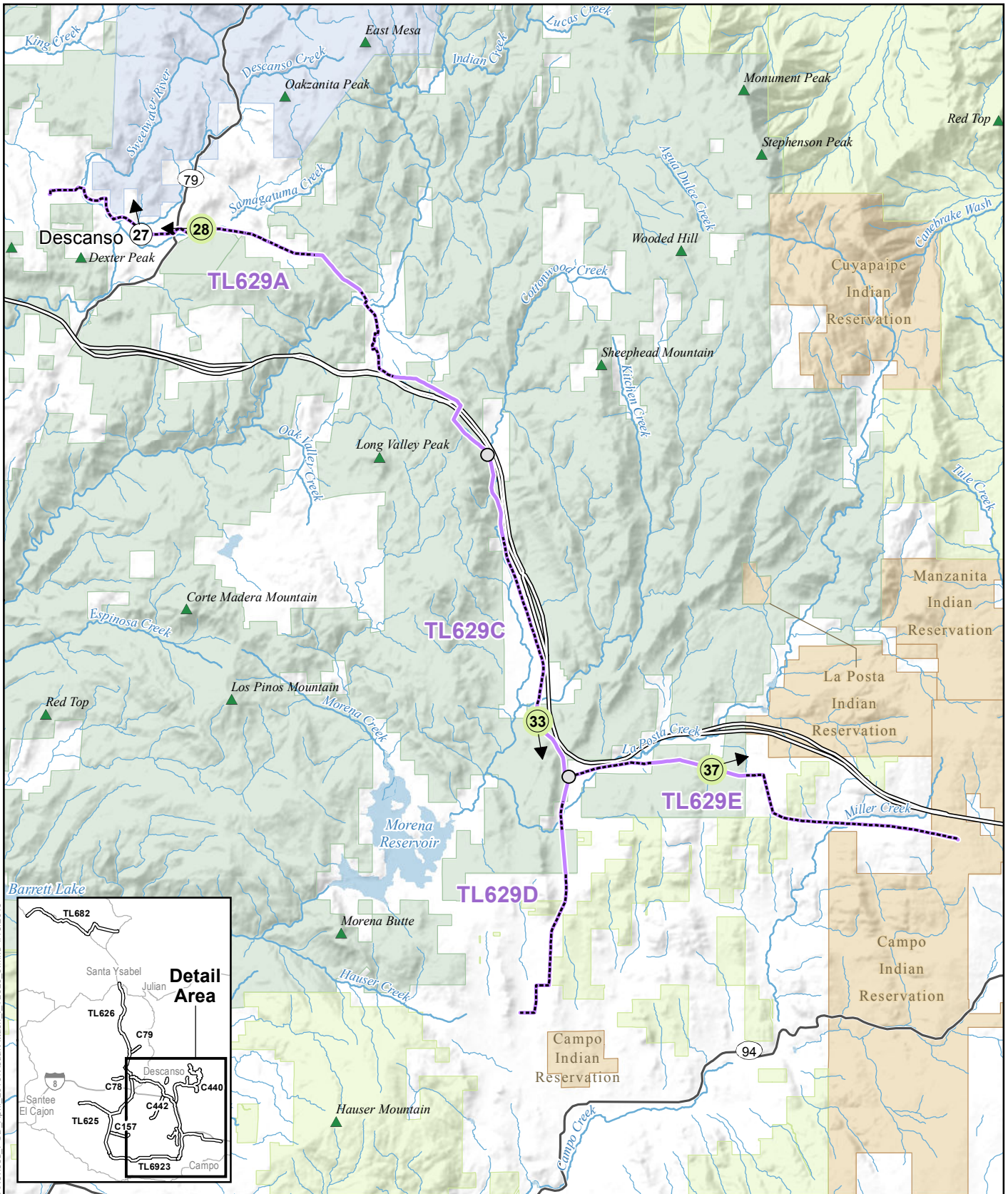
Z:\Projects\SDGE_CNF_ESRP\MXDs\PODI\Revised_POD_April_2013\Visual\Attach_1_TL626_2.mxd 4/18/2013

Attachment I: Visual Simulations (TL626 - Sheet 2 of 11)

CNF Revised Plan of Development

- | | | |
|--|---|---------------|
| Wood-to-Steel Replacement | United States Forest Service | State Highway |
| Connected Actions Shown with Dashed Line | Bureau of Land Management | Stream |
| Simulation Viewpoint, Proposed Action | Bureau of Indian Affairs | Lake |
| Simulation Viewpoint, Connected Actions | California Department of Parks and Recreation | Segment Break |

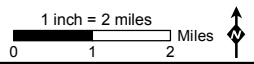
Source: SDG&E, 2012; USFS, 2012; CPAD 1.7, 2011 GreenInfo Network



Attachment I: Visual Simulations (TL629 - Sheet 3 of 11)

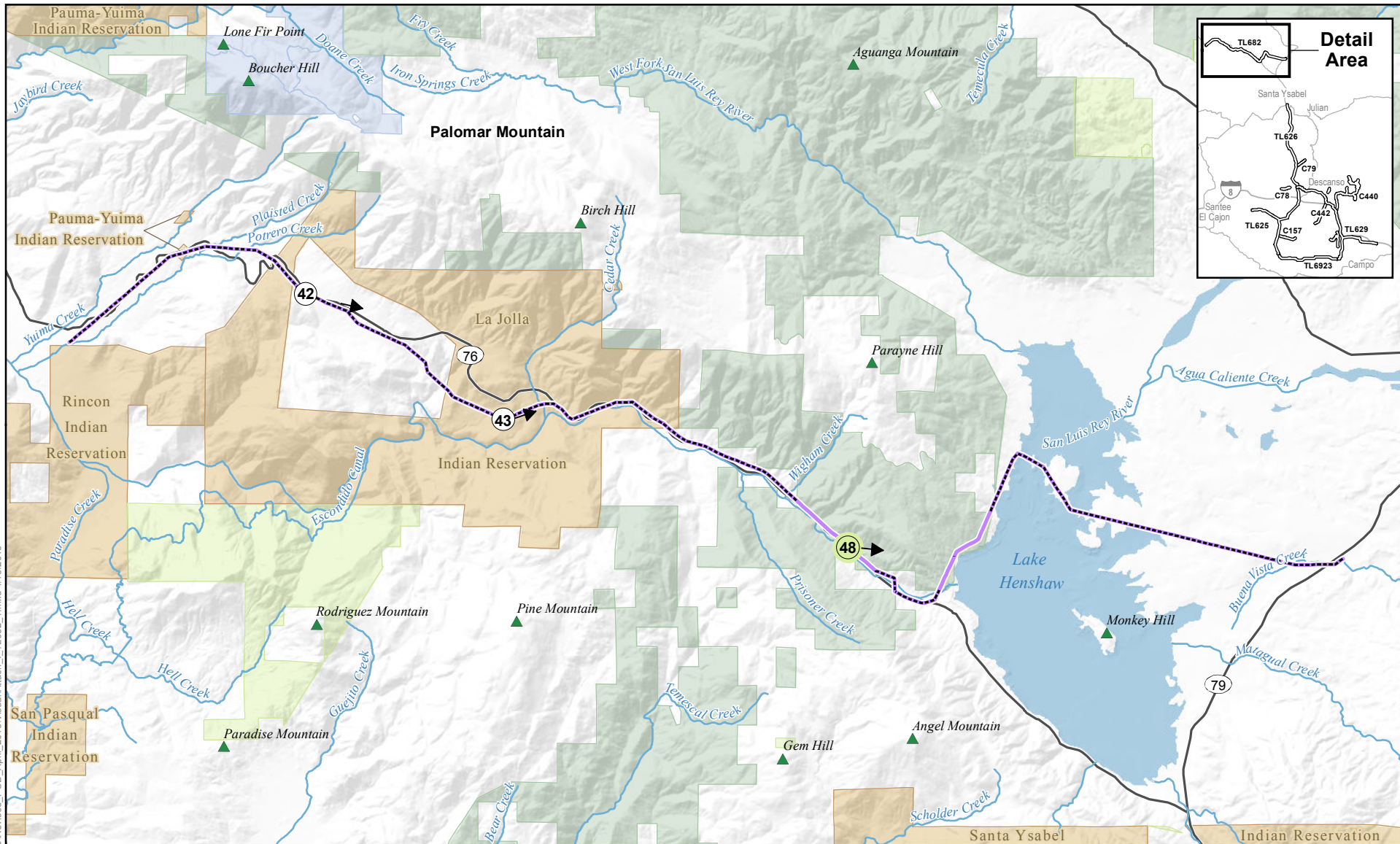
CNF Revised Plan of Development

- | | | |
|---|--|--|
| <ul style="list-style-type: none"> — Wood-to-Steel Replacement - - - Connected Actions Shown with Dashed Line Simulation Viewpoint, Proposed Action Simulation Viewpoint, Connected Actions | <ul style="list-style-type: none"> United States Forest Service Bureau of Land Management Bureau of Indian Affairs California Department of Parks and Recreation | <ul style="list-style-type: none"> Interstate Major Road/State Highway ~ Stream ● Lake Segment Break |
|---|--|--|



Z:\Projects\SDGE_CNF_ESRP\WXDs\POD\Revised_POD_April_2013\Visual\Attach_I_TL629_3.mxd 4/18/2013



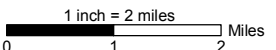
Source: SDG&E, 2012; USFS, 2012; CPAD 1.7, 2011 GreenInfo Network



Attachment I: Visual Simulations (TL682 - Sheet 4 of 11)

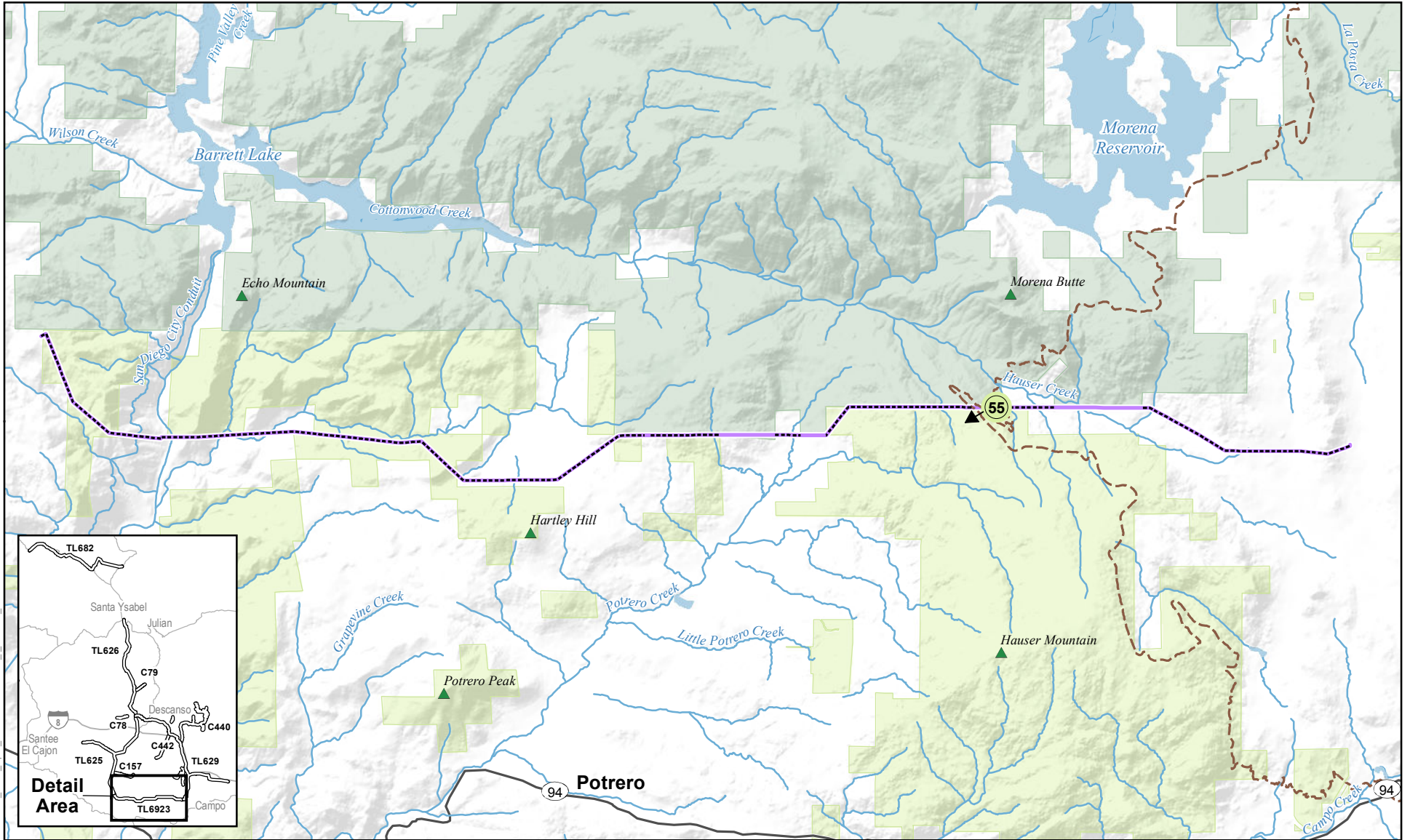
CNF Revised Plan of Development

- | | | |
|---|--|---|
| <ul style="list-style-type: none"> — Wood-to-Steel Replacement - - - - Connected Actions Shown with Dashed Line Simulation Viewpoint, Proposed Action Simulation Viewpoint, Connected Actions | <p>Land Administration</p> <ul style="list-style-type: none"> United States Forest Service Bureau of Land Management Bureau of Indian Affairs California Department of Parks and Recreation | <ul style="list-style-type: none"> State Highway ~ Stream ☪ Lake |
|---|--|---|


 A Semptra Energy company

ENVIRONMENTAL VISION
 1 inch = 2 miles


Z:\Projects\SDGE_CNF_ESRP\UXDs\POD\Revised_POD_April_2013\Visual\Attach_I_TL682_4.mxd 4/16/2013

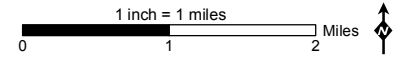
Source: SDG&E, 2012; USFS, 2012; CPAD 1.7, 2011 GreenInfo Network



Attachment I: Visual Simulations (TL6923 - Sheet 5 of 11)

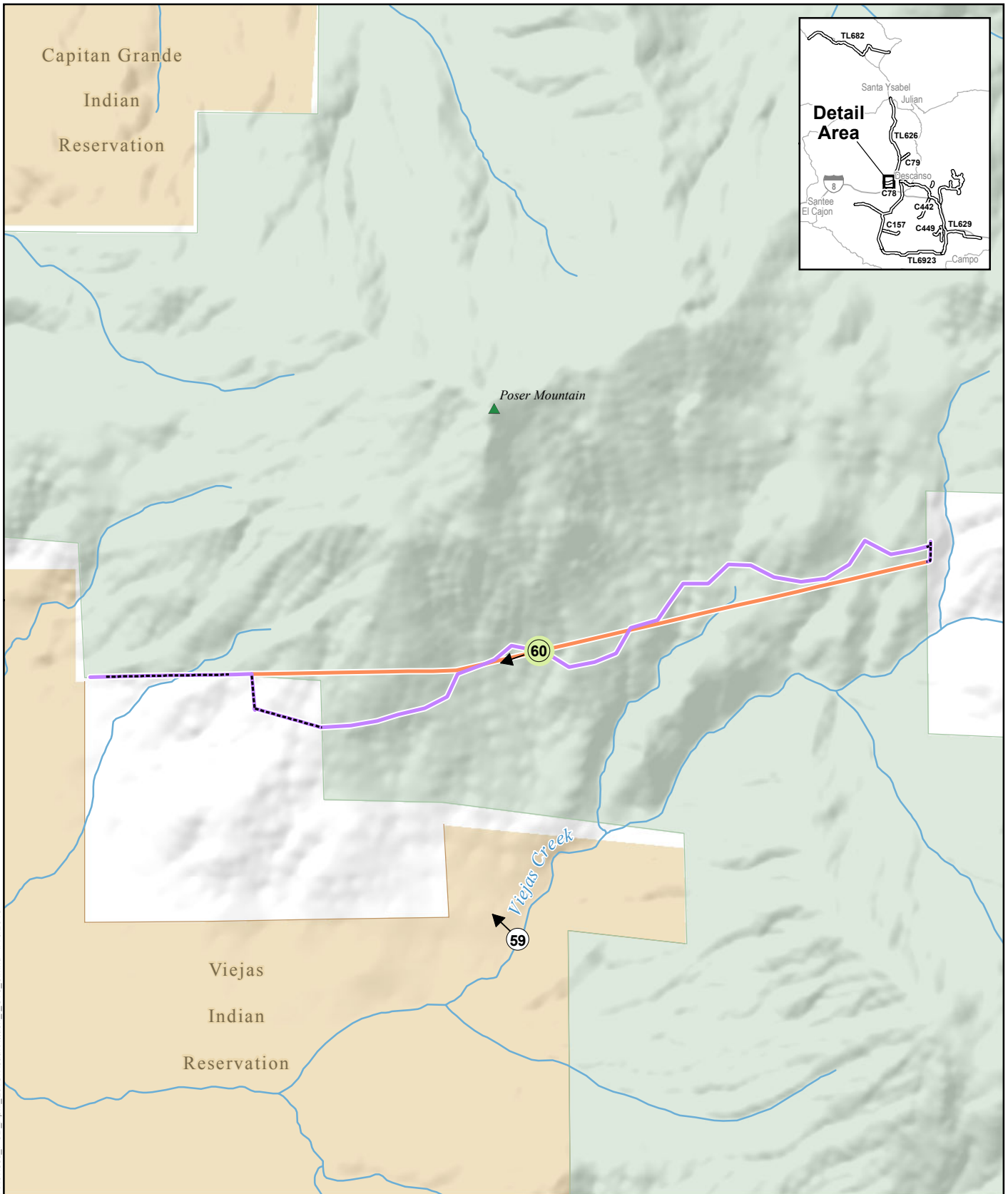
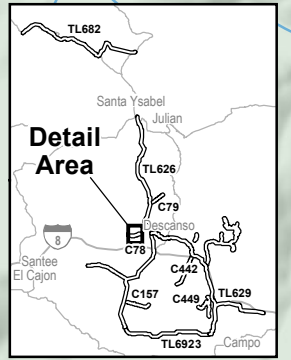
CNF Revised Plan of Development

- | | | |
|--|------------------------------|---------------------|
| Wood-to-Steel Replacement | United States Forest Service | State Highway |
| Connected Actions Shown with Dashed Line | Bureau of Land Management | Pacific Crest Trail |
| Simulation Viewpoint, Proposed Action | Stream | Lake |



Z:\Projects\SDGE_CNF_ESRP\UXDs\POD\Revised_POD_April_2013\Visual\Attach_I_TL6923_5.mxd 4/18/2013

Source: SDG&E, 2012; USFS, 2012; CPAD 1.7, 2011 GreenInfo Network



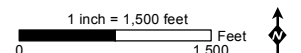
Attachment I: Visual Simulations (C78 - Sheet 6 of 11)

CNF Revised Plan of Development

- Removal
- Wood-to-Steel Replacement
- - - - - Similar Actions Shown with Dashed Line
- Simulation Viewpoint, Proposed Action
- Simulation Viewpoint, Similar Actions
- United States Forest Service
- Bureau of Indian Affairs
- ~ ~ ~ Stream

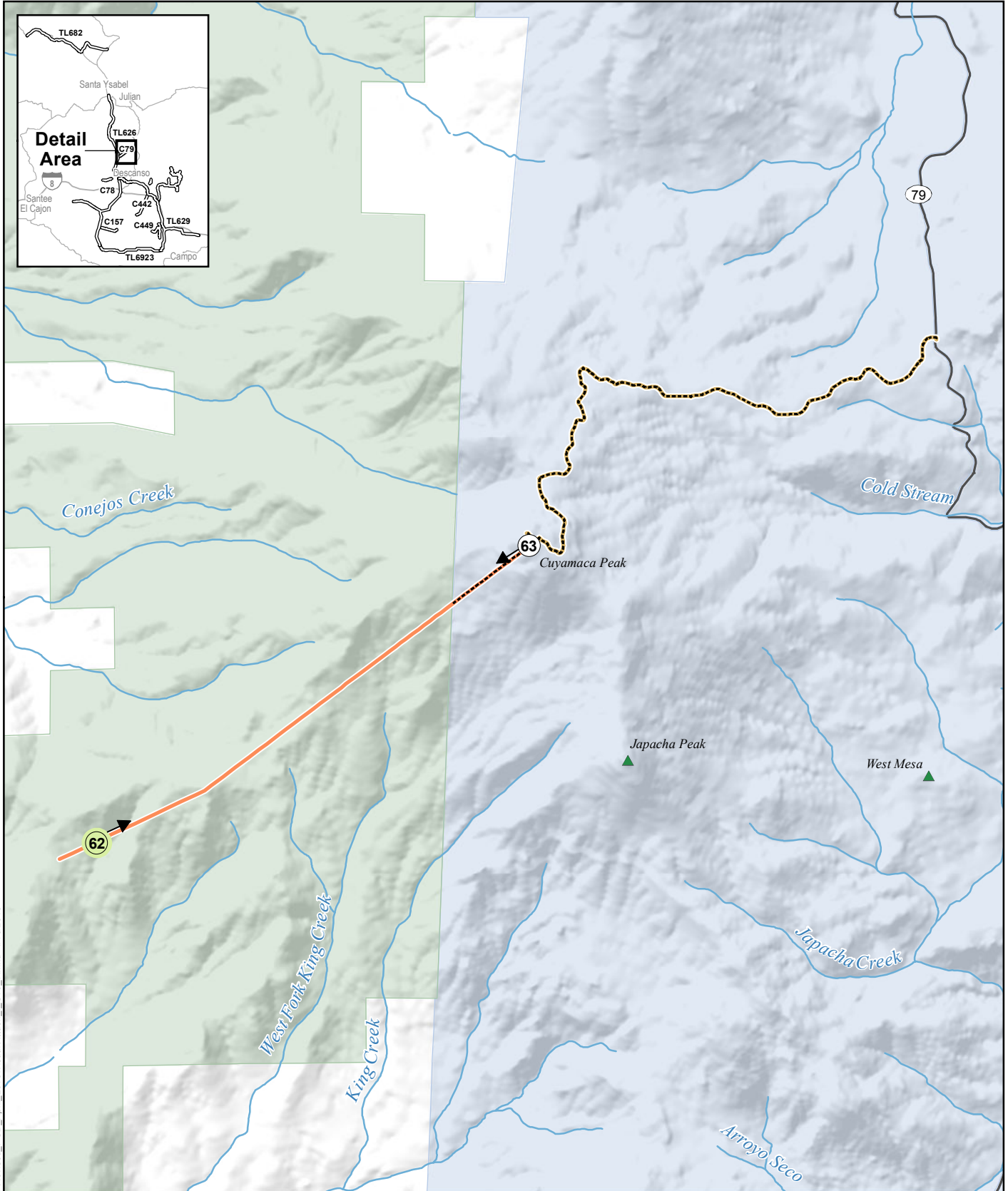


ENVIRONMENTAL VISION



Z:\Projects\SDGE_CNF_ESRP\IXD\IPOD\Revised_POD_April_2013\Visual\Attach_L_C78_6.mxd 4/19/2013

Source: SDG&E, 2012; USFS, 2012; CPAD 1.7, 2011 GreenInfo Network



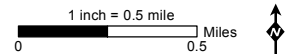
Attachment I: Visual Simulations (C79 - Sheet 7 of 11)

CNF Revised Plan of Development

- Removal
- Undergrounding
- Similar Actions Shown with Dashed Line
- Simulation Viewpoint, Proposed Action
- Simulation Viewpoint, Similar Actions
- United States Forest Service
- California Department of Parks and Recreation
- State Highway
- ~ Stream

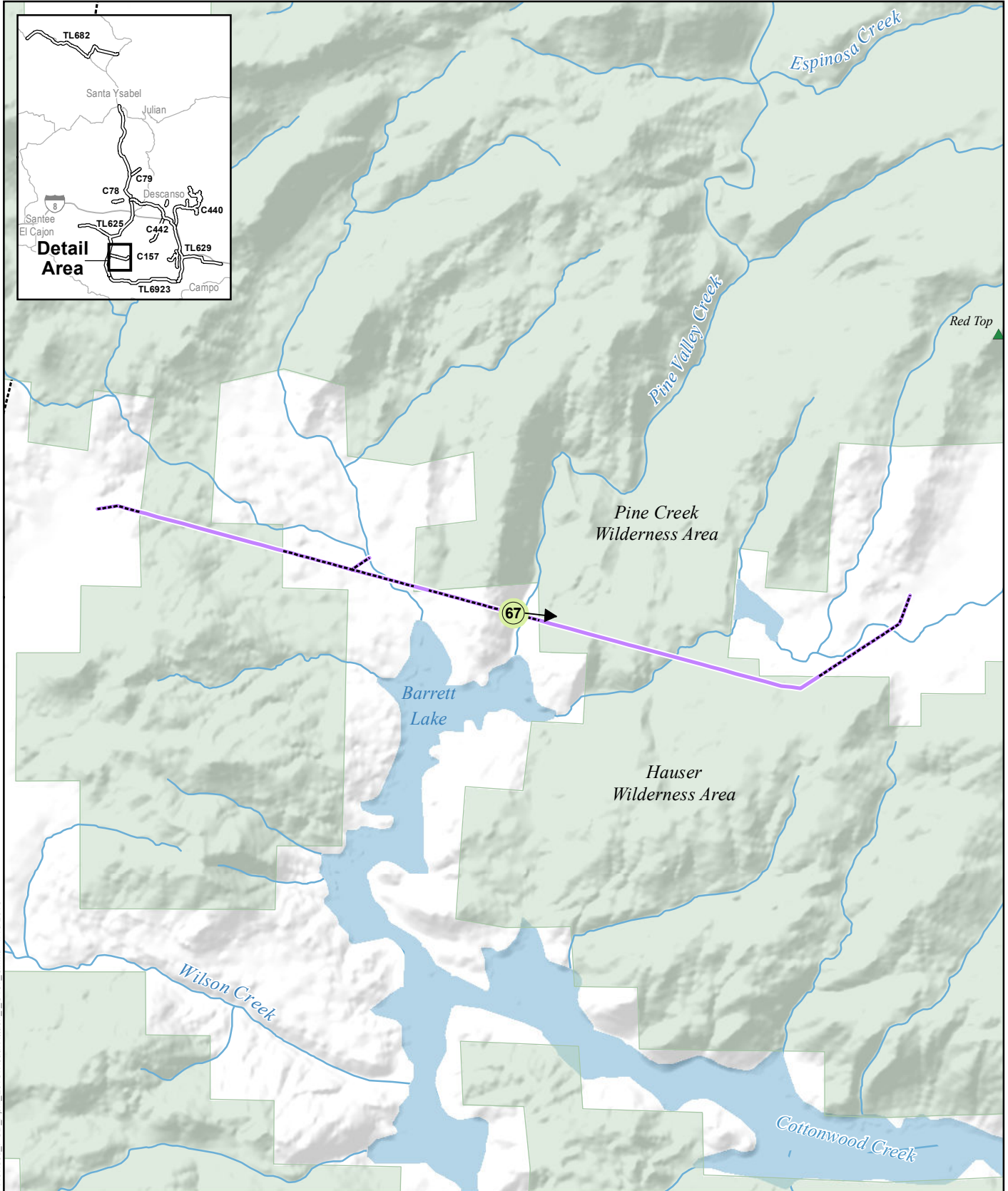


ENVIRONMENTAL VISION



Z:\Projects\SDGE_CNF_ESRP\MXDs\IPOD\Revised_POD_April_2013\Visual\Attach_I_C79_7.mxd 4/18/2013

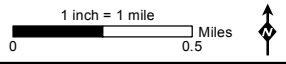
Source: SDG&E, 2012; USFS, 2012; CPAD 1.7, 2011 GreenInfo Network



Attachment I: Visual Simulations (C157 - Sheet 8 of 11)

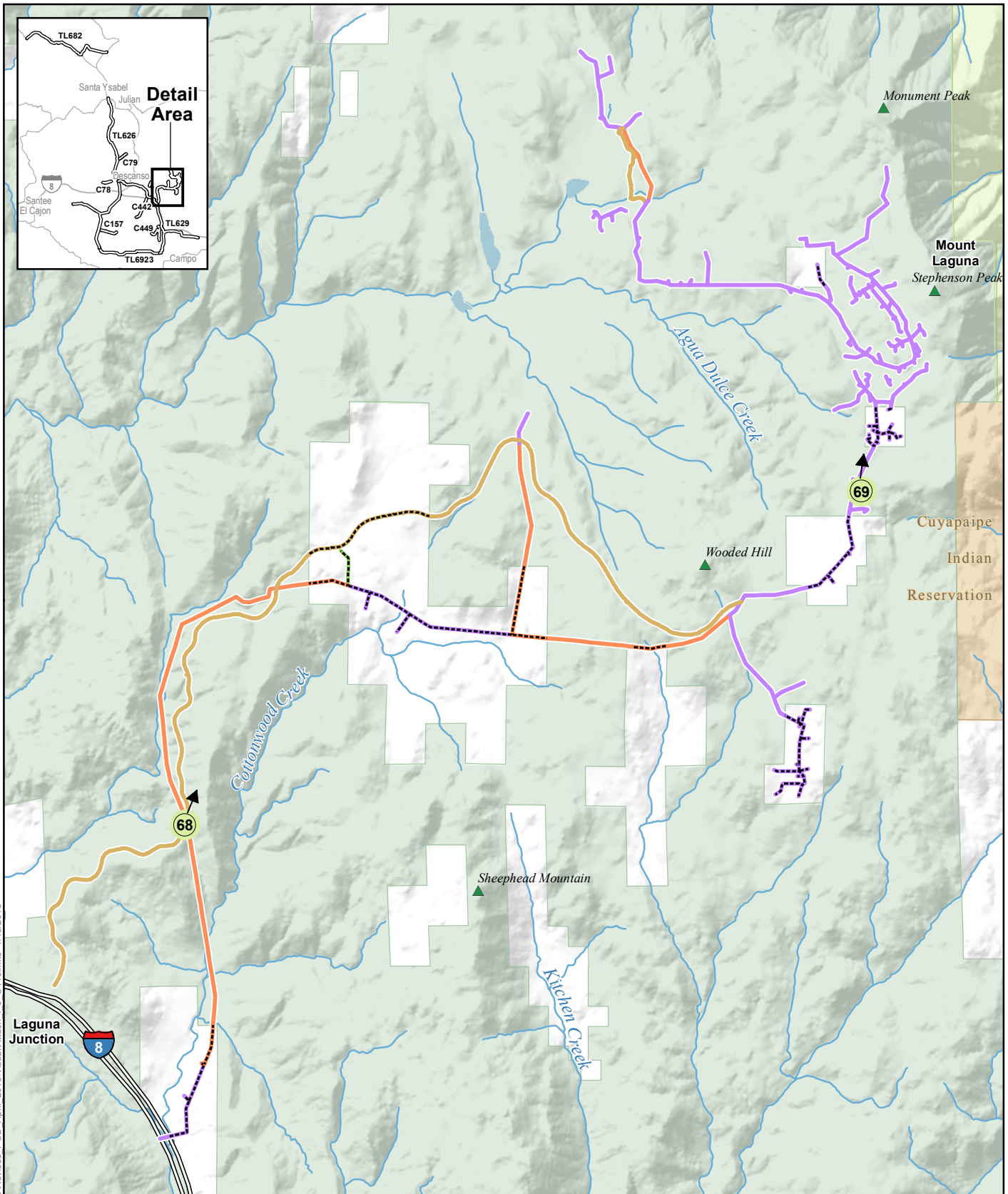
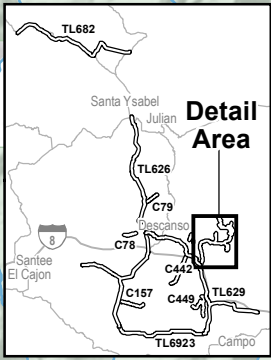
CNF Revised Plan of Development

- Wood-to-Steel Replacement
- - - - - Similar Actions Shown with Dashed Line
- 67 Simulation Viewpoint, Proposed Action
- United States Forest Service
- ~ Stream
- Lake



Z:\Projects\SDGE_CNF_ESRP\MXDs\POD\Revised_POD_April_2013\Visual\Attach_I_C157_8.mxd 4/18/2013

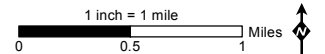
Source: SDG&E, 2012; USFS, 2012; CPAD 1.7, 2011 GreenInfo Network



Attachment I: Visual Simulations (C440 - Sheet 9 of 11)

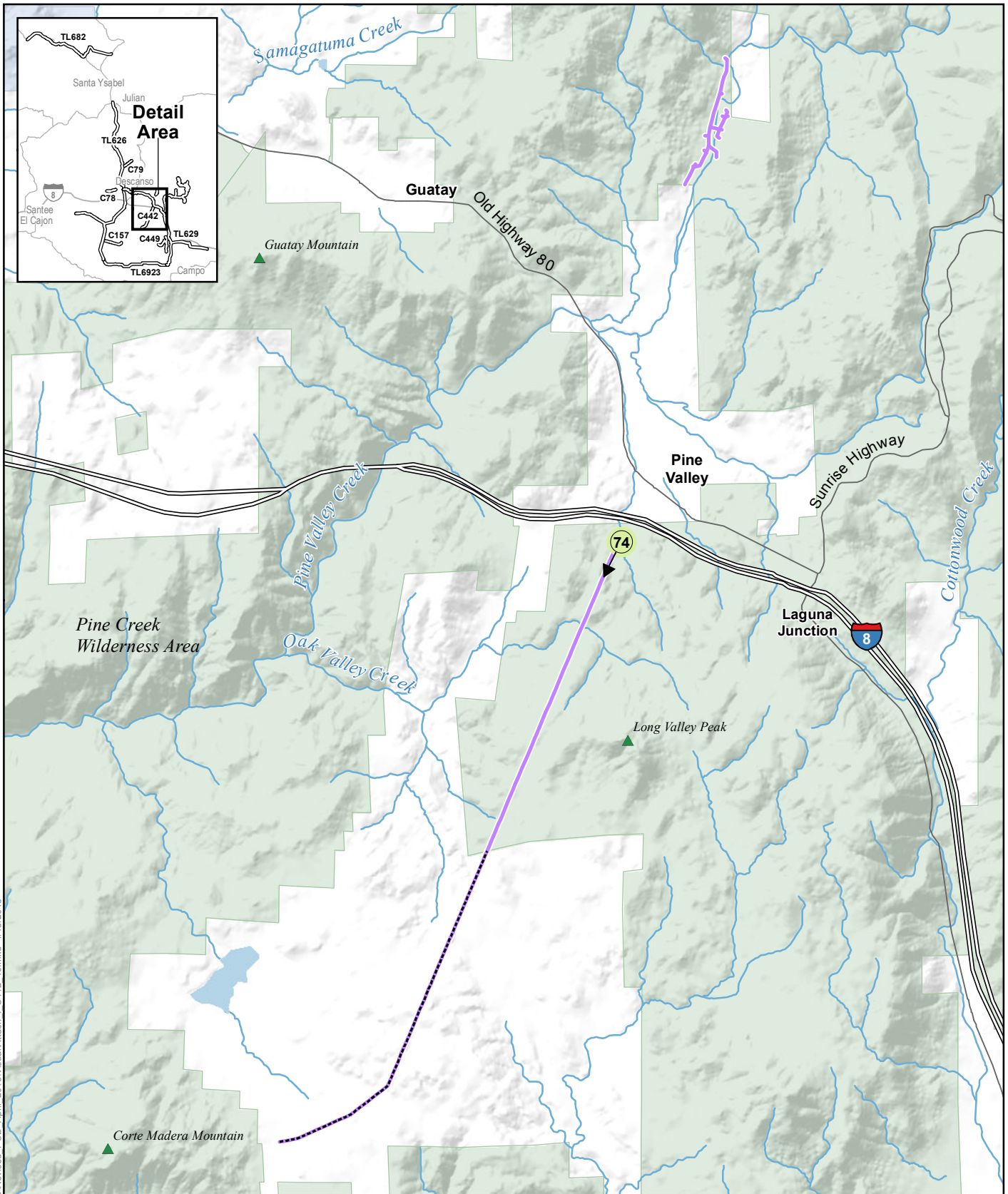
CNF Revised Plan of Development

- | | | |
|--|---------------------------------------|------------|
| New Steel | Simulation Viewpoint, Proposed Action | Interstate |
| Removal | United States Forest Service | Stream |
| Undergrounding | Bureau of Land Management | Lake |
| Wood-to-Steel Replacement | Bureau of Indian Affairs | |
| Similar Actions Shown with Dashed Line | | |



Z:\Projects\SDGE_CNF_ESRP\MXDs\POD\Revised_POD_April_2013\Visual\Attach_1_9_C440.mxd_4/18/2013

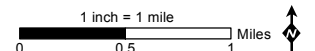
Source: SDG&E, 2012; USFS, 2012; CPAD 1.7, 2011 GreenInfo Network



Attachment I: Visual Simulations (C442 - Sheet 10 of 11)

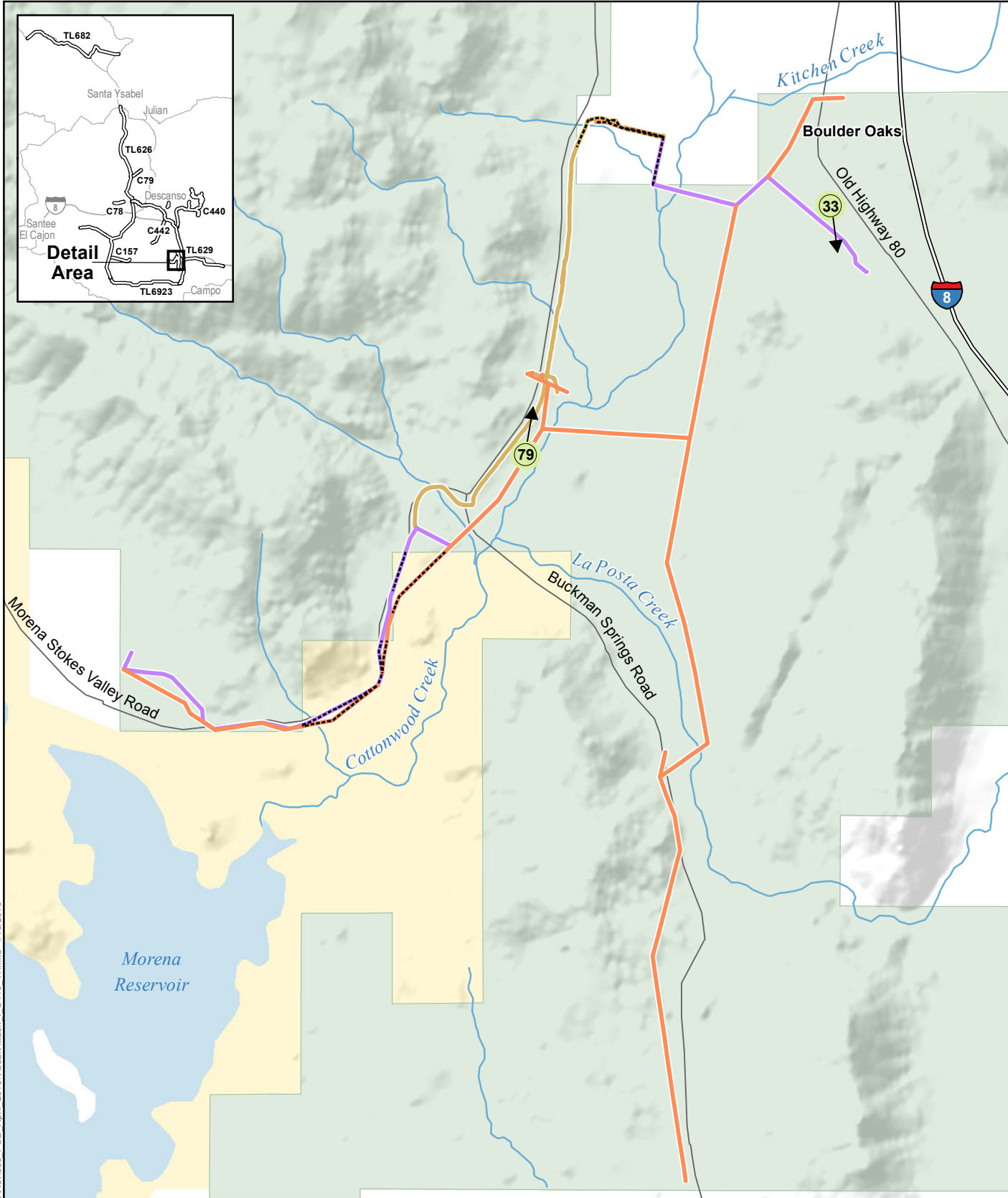
CNF Revised Plan of Development

- Wood-to-Steel Replacement
- - - - Similar Actions Shown with Dashed Line
- 74 Simulation Viewpoint, Proposed Action
- United States Forest Service
- Interstate
- ~ ~ ~ Stream
- Lake



Z:\Projects\SDGE_CNF_ESRP\MXDs\POD\Revised_POD_April_2013\Visual\Attach_I_C442_10.mxd 4/18/2013

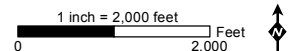
Source: SDG&E, 2012; USFS, 2012; CPAD 1.7 GreenInfo Network, 2011



Attachment I: Visual Simulations (C449 - Sheet 11 of 11)

CNF Revised Plan of Development

- | | | |
|---------------------------------------|---|------------|
| Removal | Simulation Viewpoint, Proposed Action | Interstate |
| Undergrounding | United States Forest Service | Stream |
| Wood-to-Steel Replacement | San Diego County Department of Parks and Recreation | Lake |
| Similar Action Shown with Dashed Line | | |



Z:\Projects\SDGE_CNF_ESRP\MXDs\POD\Revised_POD_April_2013\Visual\Attach_I_C449_11.mxd 4/18/2013

Source: SDG&E, 2012; USFS, 2012; CPAD 1.7 GreenInfo Network, 2011



Existing view from Loveland Reservoir Trailhead looking south (KVP 3)



Visual simulation of the project (TL625)



Existing view from Japatul Valley Road looking south (KVP 7)



Visual simulation of the project (TL625)



Existing view from I-8 westbound looking northwest (KVP 10)



Visual simulation of the project (TL625)



Existing view from Lyons Valley Road near Barrett Lake Road looking south (KVP 14)



Visual simulation of the project (TL625)



Existing view from Inaja Memorial Trail looking southwest (KVP 17)



Visual simulation of the project (TL626)



Existing view from Boulder Creek Road near Tule Springs Road (KVP 19)



Visual simulation of the project (TL626)



Existing view from Boulder Creek Road looking north (KVP 21)



Visual simulation of the project (TL626)



Existing view from SR 79 at Viejas Boulevard looking north (KVP 27)



Visual simulation of the project (TL629)



Existing view from Old Highway 80 near Prut Road looking west (KVP 28)



Visual simulation of the project (TL629)



Existing view from Boulder Oaks Campground looking northwest (KVP 33)



Visual simulation of the project (TL629 and C449)



Existing view from La Posta Road looking east (KVP 37)



Visual simulation of the project (TL629)



Existing view from SR 76 near Palomar Mountain Road looking east (KVP 42)



Visual simulation of the project (TL682)



Existing view from La Jolla Indian Reservation looking east (KVP 43)



Visual simulation of the project (TL682)



Existing view from SR 76 near San Luis Rey Picnic Grounds looking east (KVP 48)



Visual simulation of the project (TL682)



Existing view from Hauser Mountain near Pacific Crest Trail (KVP 55)



Visual simulation of the project (TL6923)



Existing view from Campground in Viejas Indian Reservation looking north (KVP 59)



Visual simulation of the project (C78)



Existing view from Viejas Grade Road looking west (KVP 60)



Visual simulation of the project (C78)



Existing view from Boulder Creek Road looking east (KVP 62)



Visual simulation of the project (C79)



Existing view from Cuyamaca Peak looking west (KVP 63)



Visual Simulation of the project (C79)



Existing view from Skye Valley Road at crossing of Barrett Lake (Pine Creek) looking east (KVP 67)



Visual simulation of the project (C157)



Existing view from Sunrise Highway looking north (KVP 68)



Visual simulation of the project (C440)



Existing view from USFS Volunteer Activity Center near Sunrise Highway looking north (KVP 69)



Visual simulation of the project (C440)



Existing view from Bear Valley Trailhead looking south (KVP 74)



Visual simulation of the project (C442)



Existing view from Pacific Crest Trail looking north (KVP 79)



Visual simulation of the project (C449)