

APPENDIX 3-F

DETAILED CONSTRUCTION SCHEDULE AND VEHICLE TABLES

Project Component No. & Activity	Sub-Phase and Activity	Approximate Duration (months)	Approximate Start Date
Phase 1: Relocate 69/12kV portion of the Artesian Substation	<u>Phase 1(a):</u> Eastern Parcel Demolition	1	August 2018
	<u>Phase 1(b):</u> Eastern Parcel Site Prep	3	September 2018
	<u>Phase 1(c):</u> Substation Construction – Below Grade	7	December 2018
	<u>Phase 1(d):</u> Substation Construction – Above Grade	6	June 2019
	<u>Phase 1(e):</u> Wiring and Relay Testing	8	April 2019
	<u>Phase 1(f):</u> Substation Cutover & Energization (includes relocation of 12kV)	2	December 2019
Phase 2: Construct new 230/69 kV portion of the Artesian Substation	<u>Phase 2(a):</u> Demo Old 69/12 kV Substation	1	February 2020
	<u>Phase 2(b):</u> Western Parcel Site Prep	2	March 2020
	<u>Phase 2(c):</u> Access Road and Retention Basin Construction	2	March 2020
	<u>Phase 2(d):</u> Substation Construction – Below Grade	3	May 2020
	<u>Phase 2(e):</u> Substation Construction – Above Grade	4	August 2020
	<u>Phase 2(f):</u> Wiring and Relay Testing	6	July 2020
	<u>Phase 2(g):</u> Substation Cutover & Energization	1	December 2020
Phase 3: Minor Modifications at Bernardo Substation	<u>Phase 3(a):</u> Foundations	1	September 2018
	<u>Phase 3(b):</u> Below Grade Construction (New duct installation)	1	September 2018
	<u>Phase 3(c):</u> Above Grade Construction (Relays and Disconnects)	1	October 2018
	<u>Phase 3(d):</u> Relay testing and Energization	1	November 2018

Project Component No. & Activity	Sub-Phase and Activity	Approximate Duration (months)	Approximate Start Date
Phase 4: Minor Modifications at Rancho Carmel Substation	<u>Phase 4(a):</u> Above Grade Construction (Shoo-fly, Relays and Disconnects)	1	November 2018
	<u>Phase 4(b):</u> Below Grade Construction (Upgrade/Replace Cable) – <i>Same as Phase 8 below</i>	1	December 2018
	<u>Phase 4(c):</u> Relay Testing and Energization	1	January 2019
Phase 5: Install new 230kV Connection at Artesian (TL23051 & TL230XX)	<u>Phase 5(a):</u> Construct Foundations	2	August 2020
	<u>Phase 5(b):</u> Pole Installation	1	October 2020
	<u>Phase 5(c):</u> Stringing and Conductor Installation	1	November 2020
Phase 6: Construct new Underground Power Line Getaways at Artesian (TL616, TL6920, TL6939, TL6974)	<u>Phase 6(a):</u> Trenching and Duct Bank Installation	2	August 2019
	<u>Phase 6(b):</u> Pulling and Conductor/Cable Installation	2	October 2019
Phase 7: Construct new Underground Power Line Getaways at Bernardo (TL6939, TL6974)	<u>Phase 7(a):</u> Underground Trench/Conduit/Substructure	2	October 2019
	<u>Phase 7(b):</u> Cable/Conductor Pulling and Tensioning	1	December 2019
Phase 8: Upgrade Getaway at Rancho Carmel	<u>Phase 8(a):</u> Pulling and Conductor/Cable Installation – <i>Same as Phase 4(b) above</i>	1	December 2018
Phase 9: Distribution Line Upgrades	<u>Phase 9(a):</u> Trenching and Duct Bank Installation	1	January 2019
	<u>Phase 9(b):</u> Pulling and Conductor/Cable Installation	1	February 2019

Project Component No. & Activity	Sub-Phase and Activity	Approximate Duration (months)	Approximate Start Date
Phase 10: Pole Replacements and Reconductor Overhead 69kV Power Lines	<u>Phase 10(a):</u> Construct Pier Foundations	3	March 2019
	<u>Phase 10(b):</u> Direct Bury Structures and Foundation Pole Installations	3	June 2019
	<u>Phase 10(c):</u> Stringing and Conductor Installation	2	September 2019
	<u>Phase 10(d):</u> Remove old structures	1	November 2019

The remainder of this page is intentionally left blank.

Project Phase	Activity & Approximate Duration ¹	Approximate Number of Workers	Equipment Type	Equipment Use	Equipment Usage Rate	Approximate Quantity of Equipment
Staging Yard Setup / Road Refresh	<i>1 Month</i>	5	Grader	Road construction and maintenance	4 hrs	1
			Water Truck	Dust control	3 hrs	1
			Mower	Clear vegetation	4 hrs	1
			Pickup Truck	Transport construction personnel	Travel only	1
Phase 1: Relocate 69/12kV Portion of the Artesian Substation	<u>Phase 1(a):</u> Eastern Parcel Demo <i>1 Month</i>	8	2-ton Flatbed Truck	Remove pole sections and hardware from site	8 hrs x 20 days	1
			Aerial Bucket Truck/Manlift	Access poles, string conductor, modify pole structure arms, provide guard structures, and other various uses	6 hrs x 20 days	1
			Excavator	Excavate soils/materials (trenching)	6 hrs x 20 days	1
			Jackhammer	Break foundations	6 hrs x 20 days	2
			Forklift	Transport materials at structure sites and staging yards	6 hrs x 20 days	2
			Large Crane	Lift, position pole structures	6 hrs x 20 days	1

¹ Durations are not necessarily continuous.

Project Phase	Activity & Approximate Duration ¹	Approximate Number of Workers	Equipment Type	Equipment Use	Equipment Usage Rate	Approximate Quantity of Equipment
Phase 1: Relocate 69/12kV Portion of the Artesian Substation	<u>Phase 1(b):</u> Eastern Parcel Site Prep <i>3 Months</i>	14	Bulldozer	Repair access roads / grade substation site	8 hrs	2
			Road grader/Blade	Road construction, maintenance, and upgrading	8 hrs	2
			Scraper	Site work	8 hrs	2
			834 Rubber Tire Compactor	Compact backfill within the trench	8 hrs	1
			Loader	Load spoil	6 hrs	1
			Backhoe	Excavate trenches	6 hrs	1
			Water Truck	Dust control	4 hrs	1
			Excavator	Excavate soils/materials (trenching)	6 hrs	1
			Hauling Truck	Transport excavated materials	Travel only	

Project Phase	Activity & Approximate Duration ²	Approximate Number of Workers	Equipment Type	Equipment Use	Equipment Usage Rate	Approximate Quantity of Equipment
Phase 1: Relocate 69/12kV Portion of the Artesian Substation	<u>Phase 1(c):</u> Substation Construction - Below Grade 7 Months	12	Drilling rig/ Truck-mounted augur	Excavate for direct-bury and micropile poles and drill substation foundations	8 hrs x 2 weeks	1
			Backhoe	Excavate trenches	6 hrs	1
			Fork Lift/Skid Steer Loader	Move equipment	6 hrs	1
			Small Mobile Crane (12-ton)	Load and unload materials	2 hrs	1
			Trencher/ Ditch Witch	Dig foundations/trenches	8 hrs	1
			Loader	Load spoil	6 hrs	1
			Water Truck	Dust control	2 hrs	1
			Handheld Compactor	Compact trenches, etc.	8 hrs	1
			Hauling Truck	Transport excavated materials	Travel only	

² Durations are not necessarily continuous.

Project Phase	Activity & Approximate Duration ²	Approximate Number of Workers	Equipment Type	Equipment Use	Equipment Usage Rate	Approximate Quantity of Equipment
Phase 1: Relocate 69/12kV Portion of the Artesian Substation	<u>Phase 1(d):</u> Substation Construction – Above Grade 6 Months	18	Pickup Truck	Transport construction personnel	Travel time only	4
			Relay/ Telecommunication/ Wiring Van	Test relay and telecommunications devices	Travel time only	2
			Aerial Bucket Truck/ Manlift	Access poles, string conductor, modify pole structure arms, and other various uses	6 hrs	2
			Large Crane	Lift, position pole structures	8 hrs x 7 days	1
			Boom Truck	Access poles and other height-restricted items	6 hrs	2
			Fork Lift/Skid Steer Loader	Move equipment	2 hrs	2
			Line Truck	Assist with overhead conductor installation	Travel time only	2
			Cable reel trailers	Transport cable reels and feed cables into conduit	8 hrs x 2 weeks	1
			Stringing Rig (trailer)	String conductor	6 hrs x 2 weeks	1
			SF6 gas cart (electric)	Process SF6 gas	8 hrs x 10 days	1
			100-hp Oil Processing Truck	Pump oil for transformers	24 hrs x 6 days	1

Project Phase	Activity & Approximate Duration ²	Approximate Number of Workers	Equipment Type	Equipment Use	Equipment Usage Rate	Approximate Quantity of Equipment
Phase 1: Relocate 69/12kV Portion of the Artesian Substation	<u>Phase 1(e):</u> Wiring and Relay Testing <i>8 Months</i>	5	Relay/ Telecommunication/ Wiring Van	Test relay and telecommunications devices	Travel time	2
			Wire Truck	Hold spools of wire	Travel only	1
	<u>Phase 1(f):</u> Substation Cutover & Energization <i>2 Months</i>	8	Line Truck	Assist with overhead conductor installation	2 hrs	2
			Relay/ Telecommunication/ Wiring Van	Test relay and telecommunications devices	Travel time	3
			Aerial Bucket Truck/Manlift	Access poles, string conductor, modify pole structure arms, provide guard structures, and other various uses	Travel only	1
			Engineer's Pickup	Transport personnel	Travel only	1

Project Phase	Activity & Approximate Duration ²	Approximate Number of Workers	Equipment Type	Equipment Use	Equipment Usage Rate	Approximate Quantity of Equipment
Phase 2: Construct New 230/69kV Portion of Artesian Substation	<u>Phase 2(a):</u> Demo Old 69/12-kV Substation <i>1 Month</i>	12	2-ton Flatbed Truck	Remove pole sections and hardware from site	4 hrs	1
			Aerial Bucket Truck/Manlift	Access poles, string conductor, modify pole structure arms, provide guard structures, and other various uses	6 hrs	1
			Excavator	Excavate soils/materials (trenching)	8 hrs x 1 week	1
			Jackhammer	Break foundations	8 hrs x 1 week	2
			Forklift	Transport materials at structure sites and staging yards	4 hrs	2
			Large Crane	Lift, position pole structures	8 hrs x 1 week	1
			Line truck	Assist with overhead conductor installation	Travel time	2
			Boom Truck	Access poles and other height-restricted items	6 hrs	1

Project Phase	Activity & Approximate Duration ²	Approximate Number of Workers	Equipment Type	Equipment Use	Equipment Usage Rate	Approximate Quantity of Equipment
Phase 2: Construct New 230/69kV Portion of Artesian Substation	<u>Phase 2(b):</u> Western Parcel Site Prep 2 Months	14	Bulldozer	Grade substation site	8 hrs	1
			Road grader/Blade	Road construction	8 hrs	1
			Scraper	Site work	8 hrs	1
			834 Rubber Tire Compactor	Compact backfill within the trench	8 hrs	1
			Loader	Load spoil	6 hrs	1
			Backhoe	Excavate trenches	6 hrs	1
			Water Truck	Dust control	4 hrs	1
			Excavator	Excavate soils/materials (trenching)	6 hrs	1
			Hauling Truck	Transport excavated materials	Travel only	
Phase 2: Construct New 230/69kV Portion of Artesian Substation	<u>Phase 2(c):</u> Access Road and Retention Basin Construction 2 Months	14	Bulldozer	Grade substation site	8 hrs	1
			Road grader/Blade	Road construction	8 hrs	1
			Scraper	Site work	8 hrs	1
			834 Rubber Tire Compactor	Compact backfill within the trench	8 hrs	1
			Loader	Load spoil	6 hrs	1
			Backhoe	Excavate trenches	6 hrs	1
			Water Truck	Dust control	4 hrs	1
			Excavator	Excavate soils/materials (trenching)	6 hrs	1

Project Phase	Activity & Approximate Duration ²	Approximate Number of Workers	Equipment Type	Equipment Use	Equipment Usage Rate	Approximate Quantity of Equipment
Phase 2: Construct New 230/69kV Portion of Artesian Substation	<u>Phase 2(d):</u> Substation Construction – Below Grade 3 Months	10	Drilling rig/ Truck-mounted augur	Excavate for direct-bury and micropile poles and drill substation foundations	8 hrs x 2 weeks	1
			Backhoe	Excavate trenches	3 hrs	1
			Fork Lift/Skid Steer Loader	Move equipment	6 hrs	1
			Small Mobile Crane (12-ton)	Load and unload materials	1 hr	1
			Trencher/Ditch Witch	Dig foundations/trenches	8 hrs	1
			Loader	Load spoil	6 hrs	1
			Water Truck	Dust control	2 hrs	1
			Handheld Compactor	Compact trenches, etc.	8 hrs	1
			Hauling Truck	Transport excavated materials	Travel only	

Project Phase	Activity & Approximate Duration ²	Approximate Number of Workers	Equipment Type	Equipment Use	Equipment Usage Rate	Approximate Quantity of Equipment
Phase 2: Construct New 230/69kV Portion of Artesian Substation	<u>Phase 2(e):</u> Substation Construction – Above Ground 4 Months	18	Pickup Truck	Transport construction personnel	Travel time	4
			Relay/ Telecommunication/ Wiring Van	Test relay and telecommunications devices	Travel time	2
			Aerial Bucket Truck/ Manlift	Access poles, string conductor, modify pole structure arms, provide guard structures, and other various uses	8 hrs	2
			Large Crane	Lift, position pole structures	8 hrs x 12 days	1
			Boom Truck	Access poles and other height-restricted items	8 hrs	2
			Fork Lift/Skid Steer Loader	Move equipment	2 hrs	2
			Line Truck	Assist with overhead conductor installation	Travel time	2
			Cable reel trailers	Transport cable reels and feed cables into conduit	6 hrs x 3 weeks	1
			Stringing Rig (trailer)	String conductor	6 hrs x 10 days	1
			SF6 gas cart (electric)	Process SF6 gas	8 hrs x 5 days	1
100-hp Oil Processing Truck	Pump transformer oil	24hrs x 4 days	1			

Project Phase	Activity & Approximate Duration ²	Approximate Number of Workers	Equipment Type	Equipment Use	Equipment Usage Rate	Approximate Quantity of Equipment
Phase 2: Construct New 230/69kV Portion of Artesian Substation	<u>Phase 2(f):</u> Wiring and Relay Testing 6 Months	5	Relay/ Telecommunicat ion/ Wiring Van	Test relay and telecommunications devices	Travel time	2
	<u>Phase 2(g):</u> Substation Cutover & Energization 1 Month	8	Line Truck/ bucket truck	Assist with overhead conductor installation	2 hrs	3
			Relay/ Telecommunicat ion/ Wiring Van	Test relay and telecommunications devices	Travel time	3
Phase 3: Minor Modifications at Bernardo Substation	<u>Phase 3(a):</u> Foundations 1 Month	6	Crew/ Equipment Truck	Support construction & transport personnel	Travel time	2
			Relay/ Telecommunicat ion/ Wiring Van	Test relay and telecommunications devices	Travel time	1

Project Phase	Activity & Approximate Duration ²	Approximate Number of Workers	Equipment Type	Equipment Use	Equipment Usage Rate	Approximate Quantity of Equipment
Phase 3: Minor Modifications at Bernardo Substation	<u>Phase 3(b):</u> Below Grade Construction (New duct installation) <i>1 Month</i>	4	Water truck	Dust control	2 hrs	1
			Backhoe	Excavate trenches	6 hrs	1
			Hauling Truck	Transport excavated materials	Travel only	
			Bobcat	Move soil and materials	8 hrs	1
	<u>Phase 3(c):</u> Above Grade Construction (Relays and Disconnects) <i>1 Month</i>	4	Crew/ Equipment Truck	Support construction & transport personnel	Travel time	2
			Relay/ Telecommunication/ Wiring Van	Test relay and telecommunications devices	Travel time	1
	<u>Phase 3(d):</u> Relay Testing and Energization <i>1 Month</i>	5	Relay, crew, & start engineer	Energize and final test of relays and equipment	Travel time	3

Project Phase	Activity & Approximate Duration ³	Approximate Number of Workers	Equipment Type	Equipment Use	Equipment Usage Rate	Approximate Quantity of Equipment
Phase 4: Minor Modification at Rancho Carmel Substation	<u>Phase 4(a):</u> Above Grade Construction (Shoo-fly, Relays and Disconnects) 1 Month	8	Crew/ Equipment Truck	Support construction & transport personnel	Travel time	4
			Relay/ Telecommunication/ Wiring Van	Test relay and telecommunications devices	Travel time	1
			Aerial Bucket Truck/Manlift	Access poles, string conductor, modify pole structure arms, provide guard structures, and other various uses	Travel time	1
			Line Truck	Assist with overhead conductor installation	Travel time	1
	<u>Phase 4(b):</u> Below Grade Construction (Upgrade/ Replace Cable) – Same as Phase 8(a) below 1 Month	<i>See Phase 8(a) below</i>				
	<u>Phase 4(c):</u> Relay Testing and Energization 1 Month	5	Relay, crew, & start engineer	Energize and final test of relays and equipment	Travel time	3

³ Durations are not necessarily continuous.

Project Phase	Activity & Approximate Duration ³	Approximate Number of Workers	Equipment Type	Equipment Use	Equipment Usage Rate	Approximate Quantity of Equipment
Phase 5: Install New 230kV Connection at Artesian (TL23051 & TL230XX)	<u>Phase 5(a):</u> Construct Foundation 2 Months	4	Water Truck	Dust control	3 hrs	1
			Drilling rig/ Truck-mounted augur	Excavate for direct-bury and micropile poles and drill substation foundations	7 hrs x 20 days	1
			Air Compressor	Operate air tools	3 hrs	1
			Boom Truck	Access poles and other height-restricted items	3 hrs	1
			Crew/Equipment Truck	Support construction & transport personnel	Travel only	1
			Concrete Truck	Transport and process concrete	2 hrs x 7 days	5
			Portable generators	Operate power tools	3 hrs	1
			Dump Truck	Haul excavated materials/import backfill, as needed	4 hrs	2

Project Phase	Activity & Approximate Duration ³	Approximate Number of Workers	Equipment Type	Equipment Use	Equipment Usage Rate	Approximate Quantity of Equipment
Phase 5: Install New 230kV Connection at Artesian (TL23051 & TL230XX)	<u>Phase 5(b): Pole Installation</u> 1 Month	4	Water Truck	Dust control	2 hrs x 6 days	1
			Tractor/Trailer Unit	Transport materials at structure sites and staging yards	4 hrs x 2 days	1
			Aerial Bucket Truck/Manlift	Access poles, string conductor, modify pole structure arms, provide guard structures, and other various uses	7 hrs x 6 days	1
			Crew/Equipment Truck	Support construction & transport personnel	Travel only	2
			Crane	Lift, position pole structures	5 hrs x 6 days	1
	<u>Phase 5(c): Stringing and Conductor Installation</u> 1 Month	5	Water Trucks	Dust control	4 hrs	2
			Wire Truck	Hold spools of wire	4 hrs	1
			Pulling Rig	Pull conductor	6 hrs	1
			Boom Truck	Access poles and other height-restricted items	5 hrs	2
			Aerial Bucket Truck/Manlift	Access poles, string conductor, modify pole structure arms, provide guard structures, and other various uses	5 hrs	2
			Crew/Equipment Truck	Support construction & transport personnel	Travel only	2

Project Phase	Activity & Approximate Duration ³	Approximate Number of Workers	Equipment Type	Equipment Use	Equipment Usage Rate	Approximate Quantity of Equipment
Phase 6: Construct New Underground Power Line Getaways at Artesian (TL616, TL6920, TL6939, TL6974)	<u>Phase 6(a):</u> Trenching and Duct Bank Installation 2 Months	12	Sawcutter	Pavement Cutting	6 hrs	1
			Backhoe	Excavate trenches	6 hrs	1
			Crane	Set vaults	4 hrs	1
			Crew/ Equipment Truck	Support construction & transport personnel	Travel only	2
			Concrete truck	Transport and process concrete	1 hrs	1
			Paver	Re-pave Asphalt	5 hrs	1
			Hauling Truck	Transport excavated materials	Travel only	
			Water Truck	Dust control	3 hrs	1
	<u>Phase 6(b):</u> Pulling and Conductor/Cable Installation 2 Months	4	Puller & Tensioner	Pull new/old cable/conductor	5 hrs	1
			Reel Trailer	Feed new cable/conductor	3 hrs	1
Crew/ Equipment Truck			Support construction & transport personnel	Travel only	2	

Project Phase	Activity & Approximate Duration ³	Approximate Number of Workers	Equipment Type	Equipment Use	Equipment Usage Rate	Approximate Quantity of Equipment
Phase 7: Construct New Underground Power Line Getaways at Bernardo (TL6939, TL6974)	<u>Phase 7(a):</u> Underground Trench/Conduit/Substructure 2 Months	12	Sawcutter	Pavement Cutting	6 hrs	1
			Backhoe	Excavate trenches	6 hrs	1
			Crane	Set vaults	3 hrs	1
			Crew/Equipment Truck	Support construction & transport personnel	Travel only	2
			Concrete truck	Transport and process concrete	1 hrs	1
			Paver	Re-pave Asphalt	5 hrs	1
			Water Truck	Dust control	3 hrs	1
	<u>Phase 7(b):</u> Cable/Conductor Pulling and Tensioning 1 Month	4	Puller & Tensioner	Pull new/old cable/conductor	6 hrs	1
			Reel Trailer	Feed new cable/conductor	4 hrs	1
			Crew/Equipment Truck	Support construction & transport personnel	Travel only	2
Phase 8: Upgrade Getaway at Rancho Carmel	<u>Phase 8(a):</u> Pulling and Conductor/Cable Installation (same as Phase 4(b) above) 1 Month	4	Puller & Tensioner	Pull new/old cable/conductor	5 hrs	1
			Reel Trailer	Feed new cable/conductor	5 hrs	1
			Crew/Equipment Truck	Support construction & transport personnel	Travel only	2

Project Phase	Activity & Approximate Duration ³	Approximate Number of Workers	Equipment Type	Equipment Use	Equipment Usage Rate	Approximate Quantity of Equipment
Phase 9: Distribution Line Upgrades	<u>Phase 9(a):</u> Trenching and Duct Bank Installation <i>1 Month</i>	10	Backhoe	Excavate trenches	6 hrs	1
			Bobcat	Move soil and place materials	6 hrs	1
			Water truck	Dust control	4 hrs	1
			Hauling Truck	Transport excavated materials	Travel only	
			Crew/ Equipment Truck	Support construction & transport personnel	Travel only	2
	<u>Phase 9(b):</u> Pulling and Conductor/ Cable Installation <i>1 Month</i>	4	Puller & Tensioner	Pull new/old cable/conductor	6 hrs	1
			Reel Trailer	Feed new cable/conductor	6 hrs	1
			Crew/ Equipment Truck	Support construction & transport personnel	Travel only	2

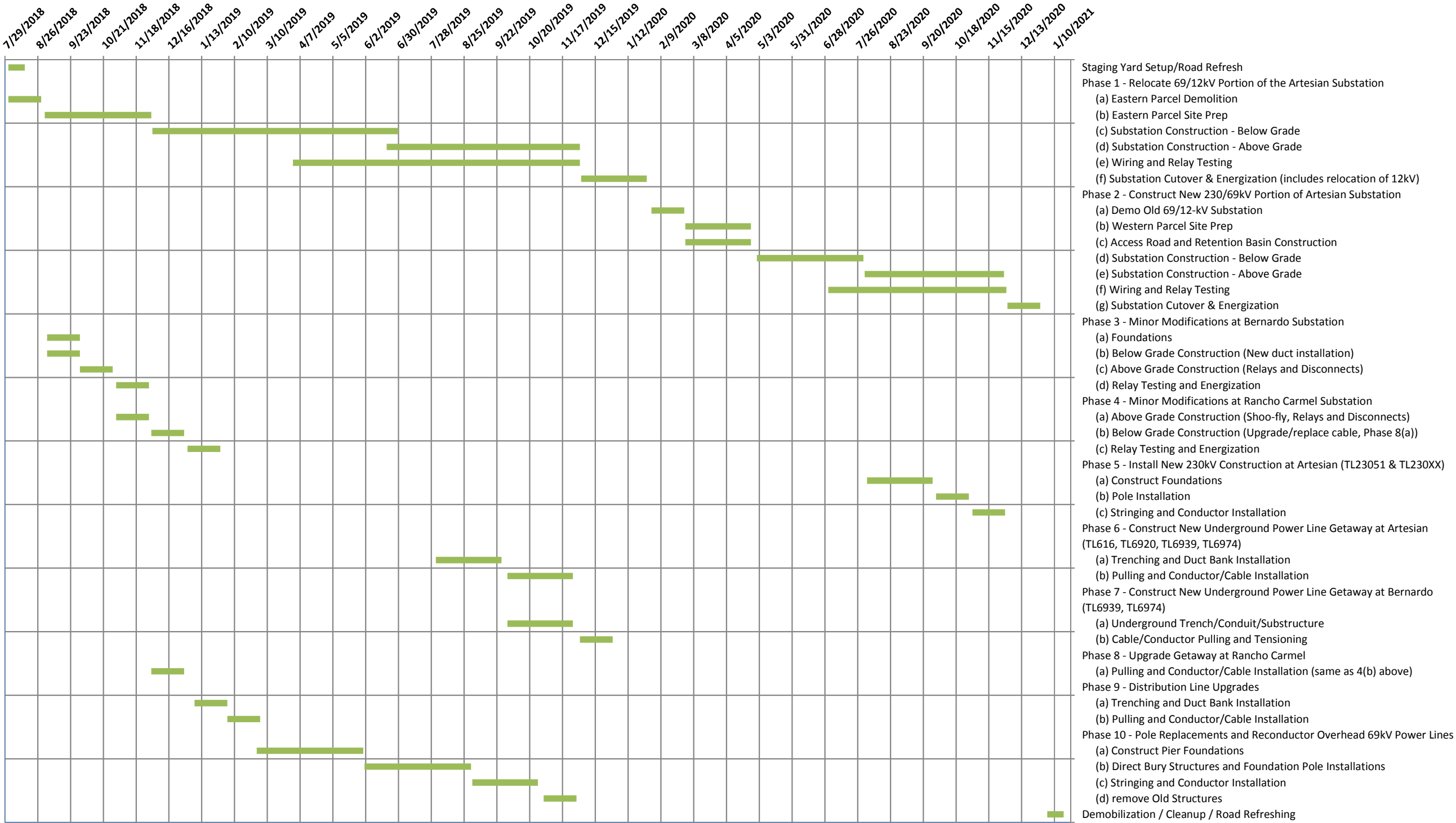
Project Phase	Activity & Approximate Duration ³	Approximate Number of Workers	Equipment Type	Equipment Use	Equipment Usage Rate	Approximate Quantity of Equipment
Phase 10: Pole Replacement and Reconductor Overhead 69kV Power Lines	<u>Phase 10(a):</u> Construct Pier Foundations <i>3 Months</i>	4	Water Truck	Dust control	4 hrs	2
			Drilling rig/ Truck-mounted augur	Excavate for direct-bury and micropile poles and drill substation foundations	6 hrs	2
			Air Compressor	Operate air tools	3 hrs	1
			Boom Truck	Access poles and other height-restricted items	5 hrs	2
			Pickup Truck	Transport construction personnel	Travel only	2
			Concrete Truck	Transport and process concrete	1 hrs	5
			Portable generators	Operate power tools	2 hrs	2

Project Phase	Activity & Approximate Duration ³	Approximate Number of Workers	Equipment Type	Equipment Use	Equipment Usage Rate	Approximate Quantity of Equipment
Phase 10: Pole Replacement and Reconductor Overhead 69kV Power Lines	<u>Phase 10(b):</u> Direct Bury Structures and Foundation Pole Installations 3 Months	8	Water Truck	Dust control	4 hrs	2
			Tractor/Trailer Unit	Transport materials at structure sites and staging yards	3 hrs	1
			Auger	Hole drilling	6 hrs	1
			Crew/Equipment Truck	Support construction & transport personnel	5 hrs	1
			Aerial Bucket Truck/Manlift	Access poles, string conductor, modify pole structure arms, and other various uses	6 hrs	3
			Crane	Pole setting	5 hrs	1
			Pickup Truck	Transport construction personnel	Travel only	3
	<u>Phase 10(c):</u> Stringing and Conductor Installation 2 Months	5	Water Trucks	Dust control	4 hrs	2
			Wire Truck	Hold spools of wire	6 hrs	1
			Pulling Rig	Pull conductor	6 hrs	1
			Boom Truck	Access poles and other height-restricted items	6 hrs	2
			Aerial Bucket Truck/Manlift	Access poles, string conductor, modify pole structure arms, and other various uses	6 hrs	2
			Crew/Equipment Truck	Support construction & transport personnel	Travel only	2

Project Phase	Activity & Approximate Duration ³	Approximate Number of Workers	Equipment Type	Equipment Use	Equipment Usage Rate	Approximate Quantity of Equipment
Phase 10: Pole Replacement and Reconductor Overhead 69kV Power Lines	<u>Phase 10(d):</u> Remove Old Structures 1 Month	10	Boom Truck	Access poles and other height-restricted items	8 hrs	2
			Aerial Bucket Truck/Manlift	Access poles, string conductor, modify pole structure arms, provide guard structures, and other various uses	8 hrs	2
			Crew/ Equipment Truck	Support construction & transport personnel	Travel only	2
Demobilization / Cleanup / Road Refreshing	1 Month	5	Grader	Road construction and maintenance	2 hrs	1
			Water Truck	Dust control	2 hrs	1
			Pickup Truck	Transport construction personnel	Travel only	1

SDG&E 230-kV Artesian Substation Expansion Project

Detailed Construction Schedule



■ Completed ■ Remaining