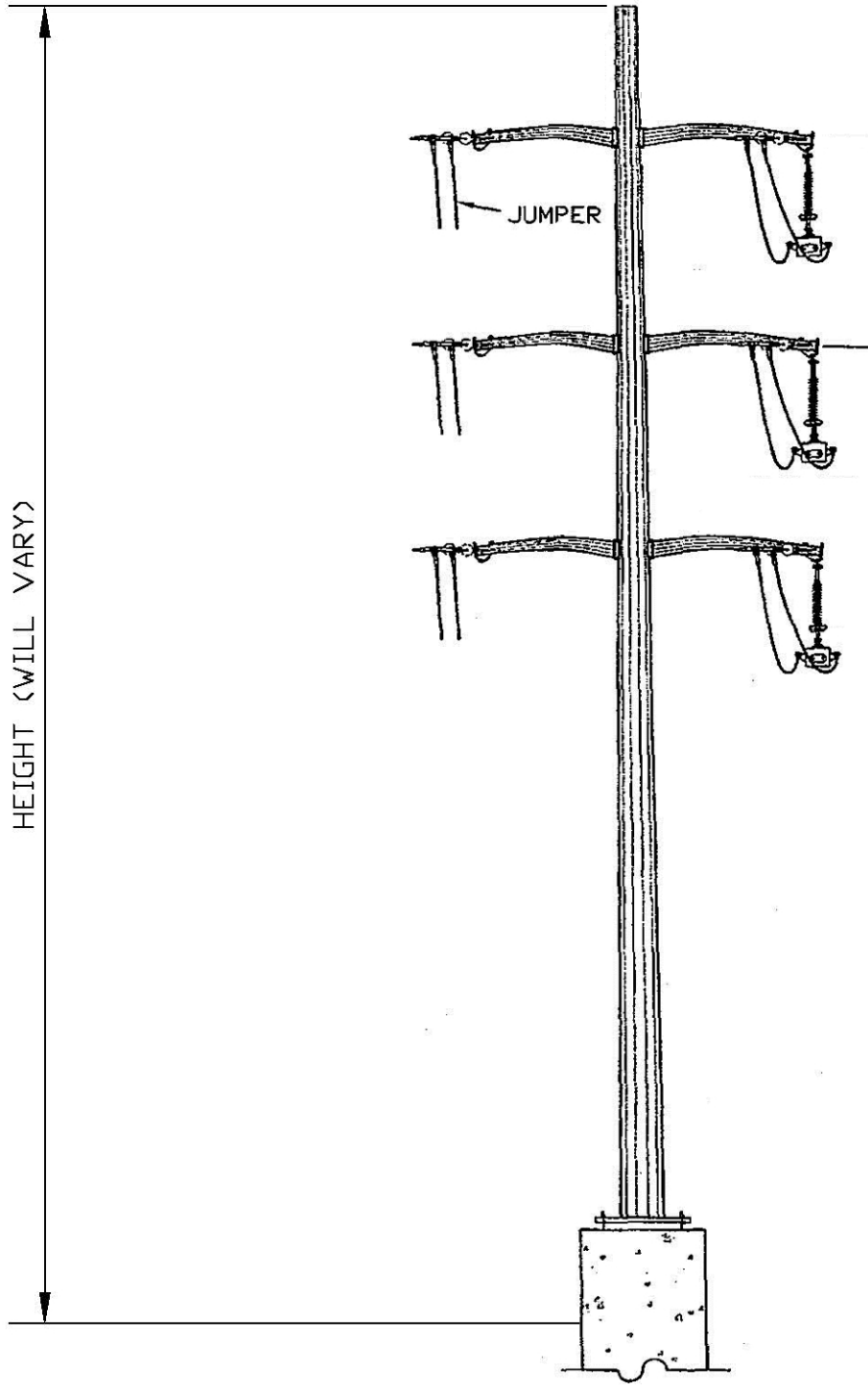
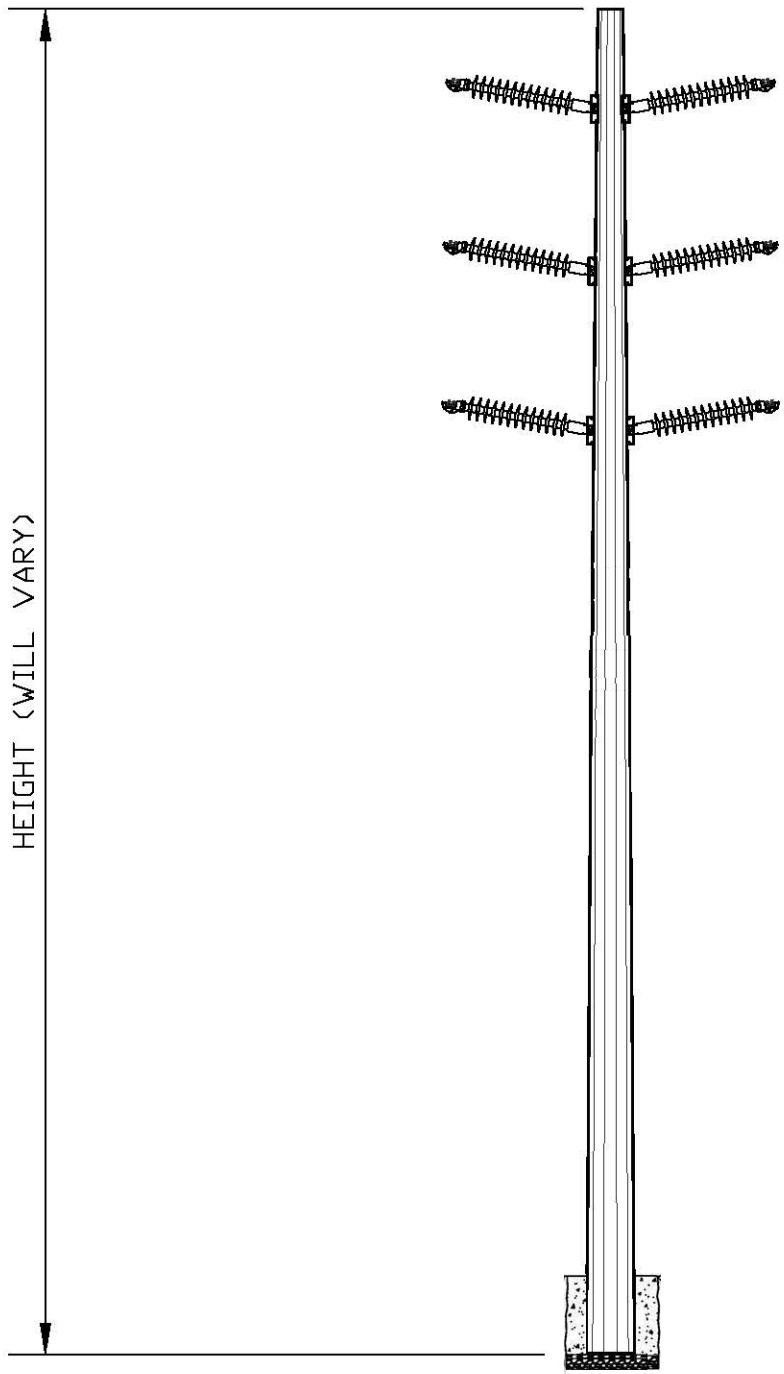


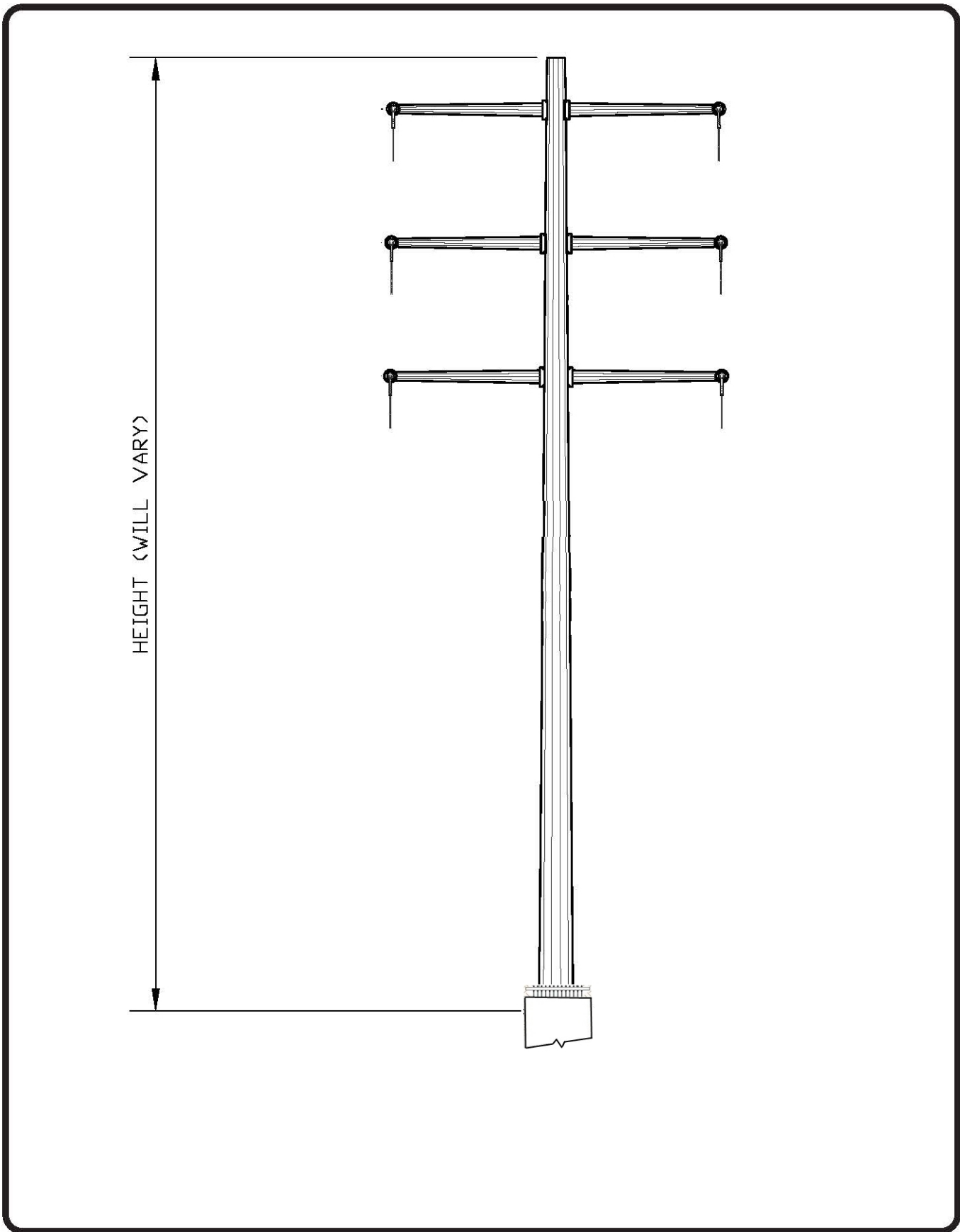
APPENDIX 3-C

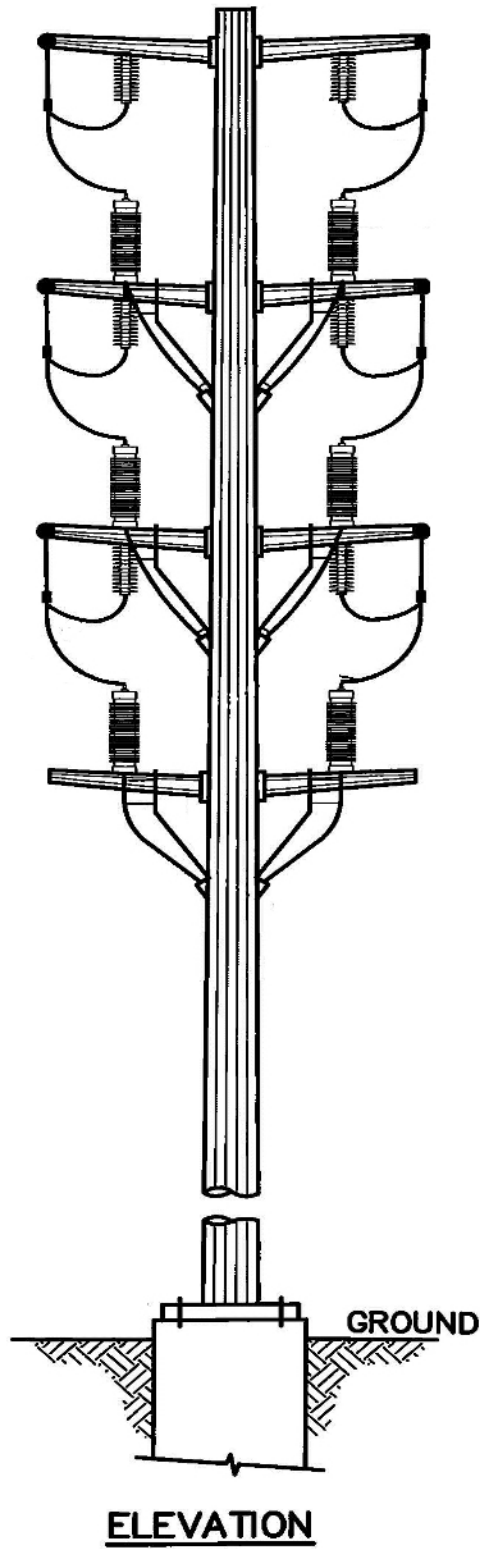
TYPICAL STRUCTURE DIAGRAMS AND PHOTOGRAPHS

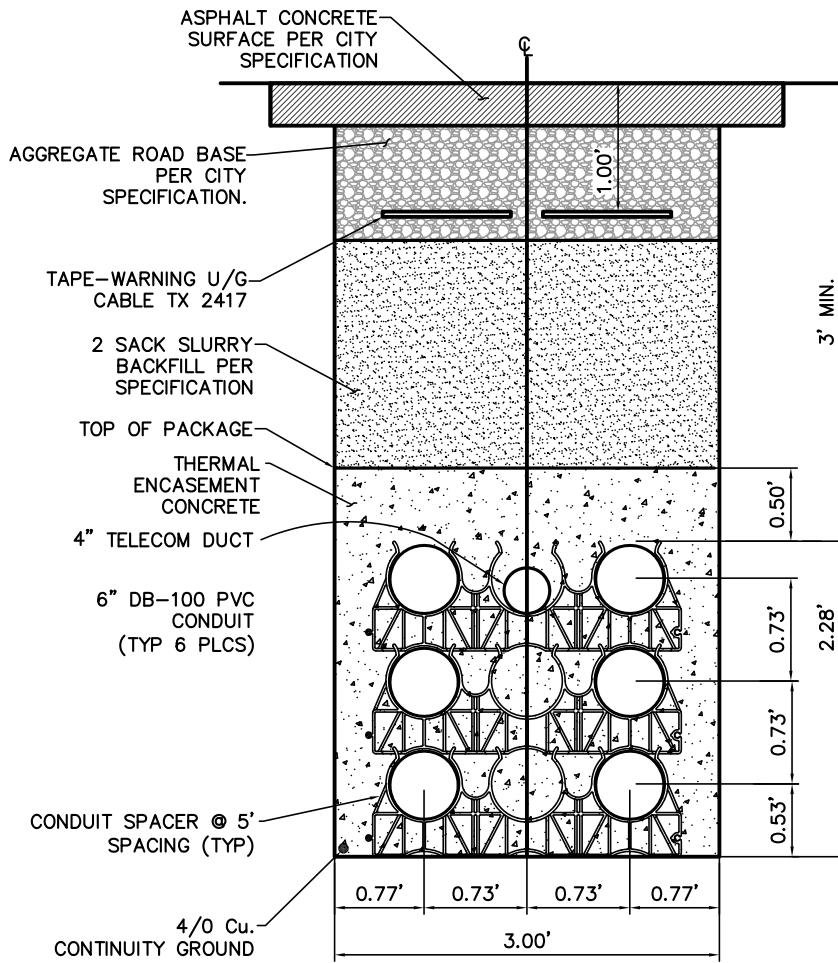




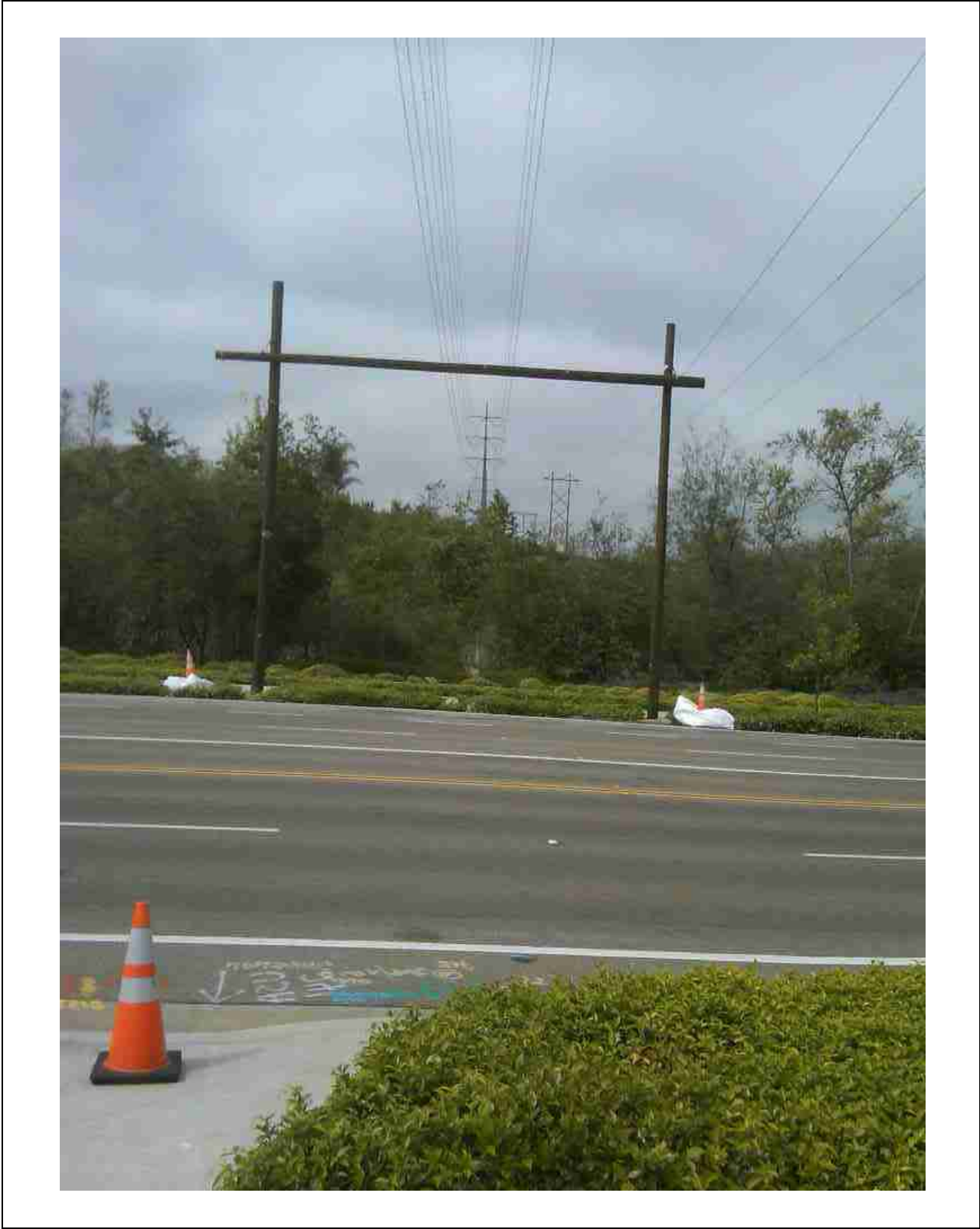
Typical Proposed 69kV Steel Double-Circuit Direct-Buried Pole







**TYPICAL 69KV DOUBLE CIRCUIT
DUCT BANK
FIGURE 1.1
NOT TO SCALE**



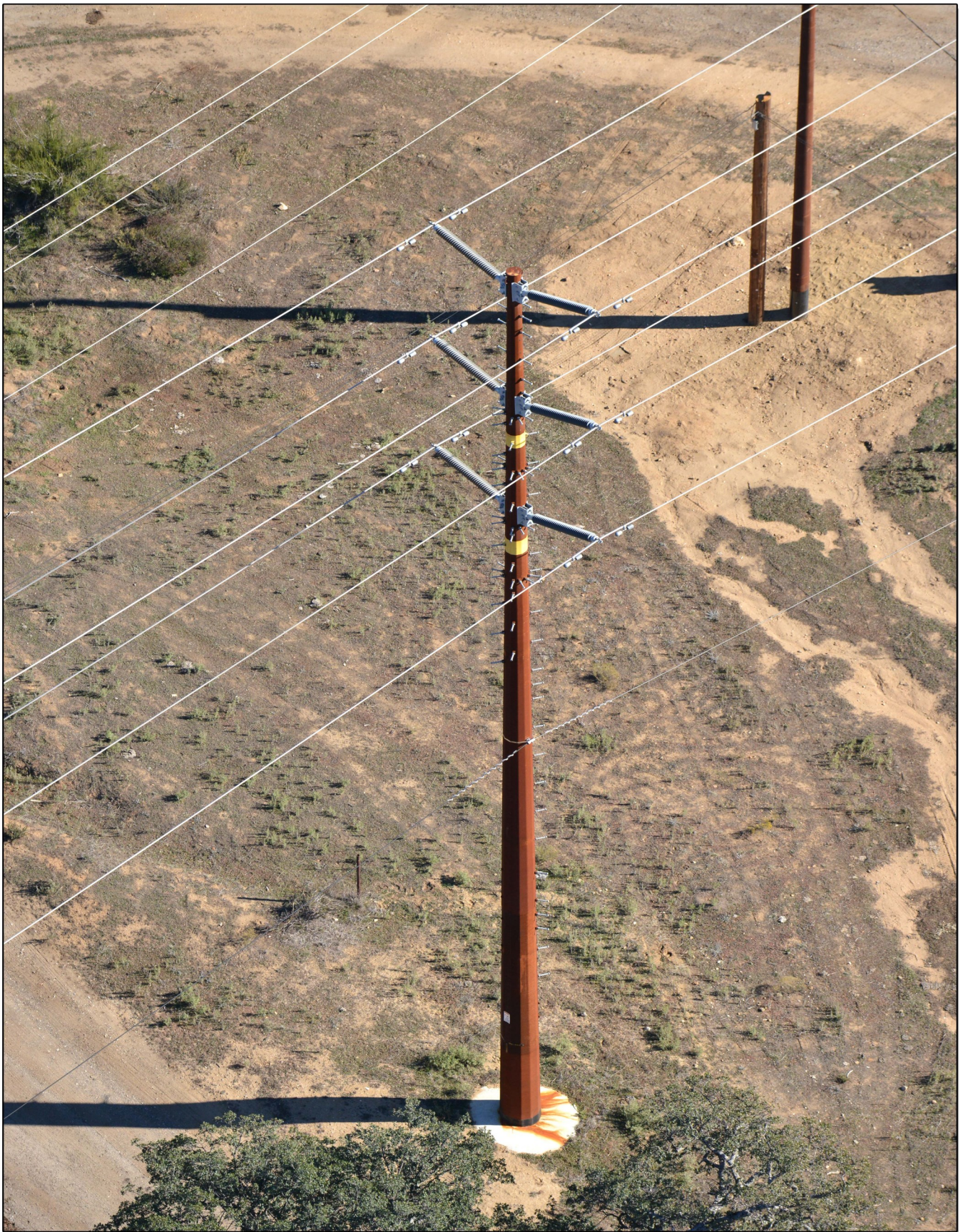
Typical H-Frame Guard Structure



Typical 69kV Double-Circuit Dead-end Wood Monopole with Distribution Underbuild



Typical 230kV Double-Circuit Dead-end Dull Galvanized Steel Tubular Pole



Typical 69kV Double-Circuit Tangent Weathering Steel Tubular Pole



Typical 69kV Double-Circuit Dead-end Weathering Steel Tubular Pole



Typical 69kV Double-Circuit Cable Pole with Only 1 Side Installed & Distribution Underbuild



Typical 69kV Double-Circuit Tangent Wood Monopole



Typical 69kV Double-Circuit Steel Cable Pole with Only 1 Side Installed and 1 Side Pass Through