

TYPICAL EXISTING 138 kV
TANGENT WOOD H-FRAME
POLE STRUCTURE


*DRAWING NOT TO SCALE

**PRELIMINARY - NOT
FOR CONSTRUCTION**



COPYRIGHT © 2014 BURNS & MCDONNELL ENGINEERING COMPANY, INC.

REV.	DESCRIPTION	DATE
A	FOR PLANNING PURPOSES	1/3/2014

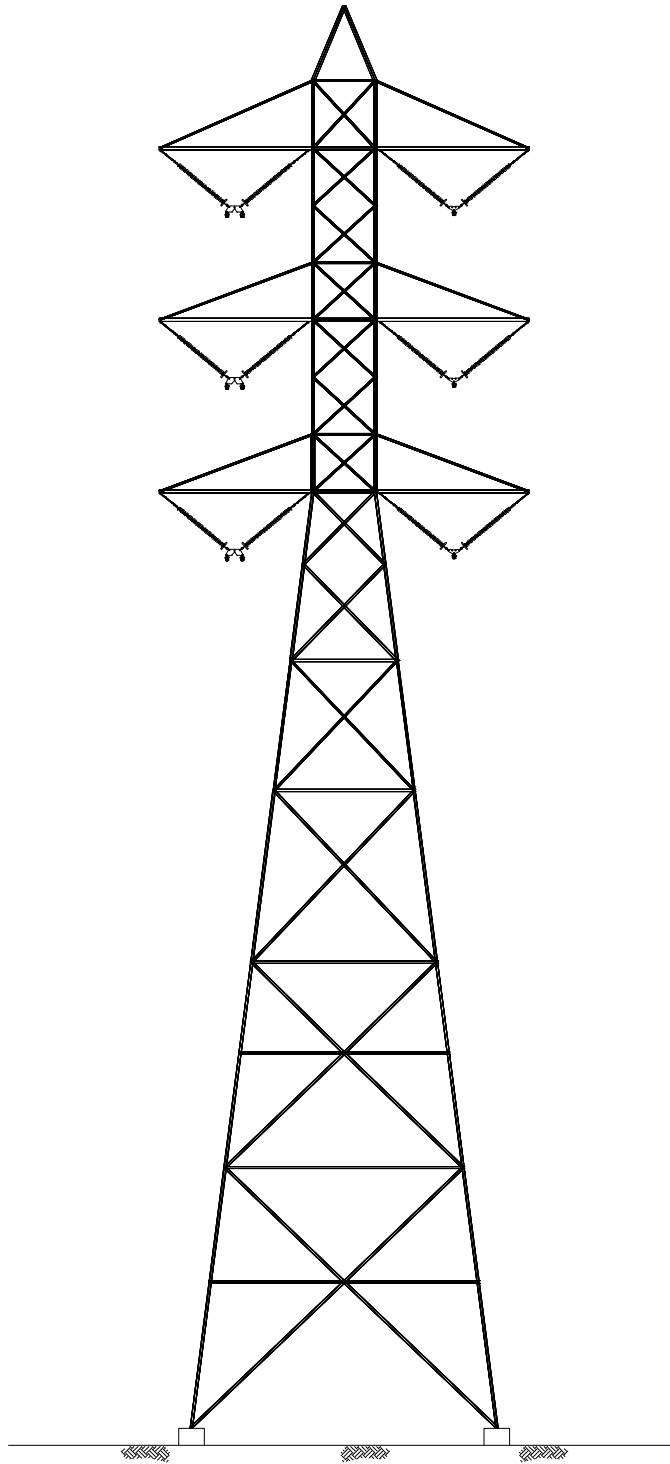

SAN DIEGO GAS & ELECTRIC
 TRANSMISSION ENGINEERING
A Sempra Energy utility

STRUCTURE DRAWINGS
 SX-PQ PROJECT
 TYPICAL 138 kV

 73493-01

 SHEET 1 OF 8

COPYRIGHT © 2014 BURNS & MCDONNELL ENGINEERING COMPANY, INC.



TYPICAL EXISTING 230 kV
TANGENT DOUBLE CIRCUIT
LATTICE STEEL TOWER

*DRAWING NOT TO SCALE

**PRELIMINARY - NOT
FOR CONSTRUCTION**



REV.	DESCRIPTION	DATE
A	FOR PLANNING PURPOSES	1/3/2014



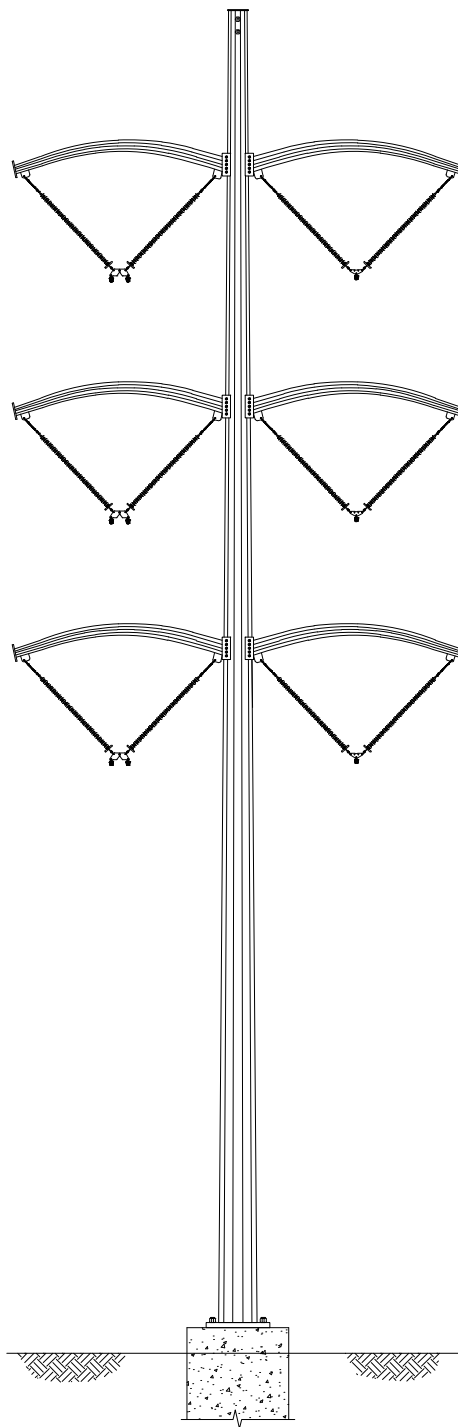
SAN DIEGO GAS & ELECTRIC
TRANSMISSION ENGINEERING

STRUCTURE DRAWINGS
SX-PQ PROJECT
TYPICAL 230 kV

SHEET 2 OF 8

73493-02

COPYRIGHT © 2014 BURNS & McDONNELL ENGINEERING COMPANY, INC.




TYPICAL EXISTING 230 kV
TANGENT DOUBLE CIRCUIT
TUBULAR STEEL POLE STRUCTURE

*DRAWING NOT TO SCALE

**PRELIMINARY - NOT
FOR CONSTRUCTION**



REV.	DESCRIPTION	DATE
A	FOR PLANNING PURPOSES	1/3/2014

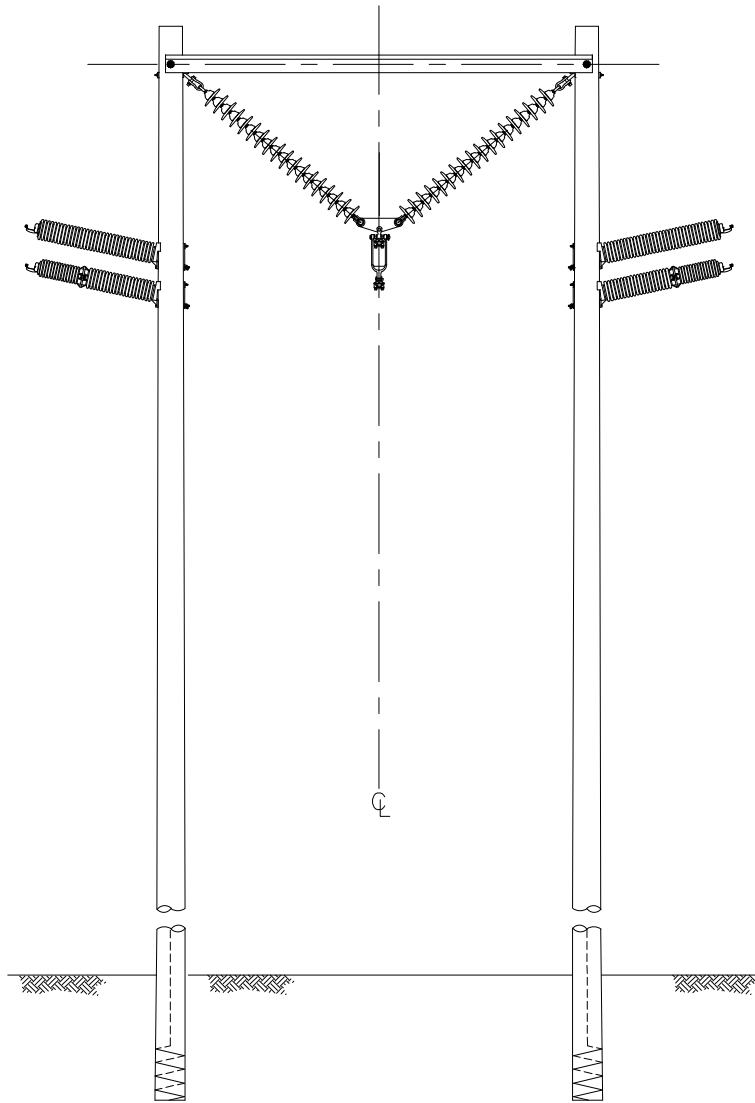

SAN DIEGO GAS & ELECTRIC
 TRANSMISSION ENGINEERING
A Sempra Energy utility

SHEET 3 OF 8

STRUCTURE DRAWINGS
SX-PQ PROJECT
TYPICAL 230 kV

73493-03

COPYRIGHT © 2014 BURNS & MCDONNELL ENGINEERING COMPANY, INC.



TYPICAL EXISTING 138 kV
TANGENT WOOD POLE
H-FRAME STRUCTURE

*DRAWING NOT TO SCALE

**PRELIMINARY - NOT
FOR CONSTRUCTION**



REV.	DESCRIPTION	DATE
A	FOR PLANNING PURPOSES	1/3/2014

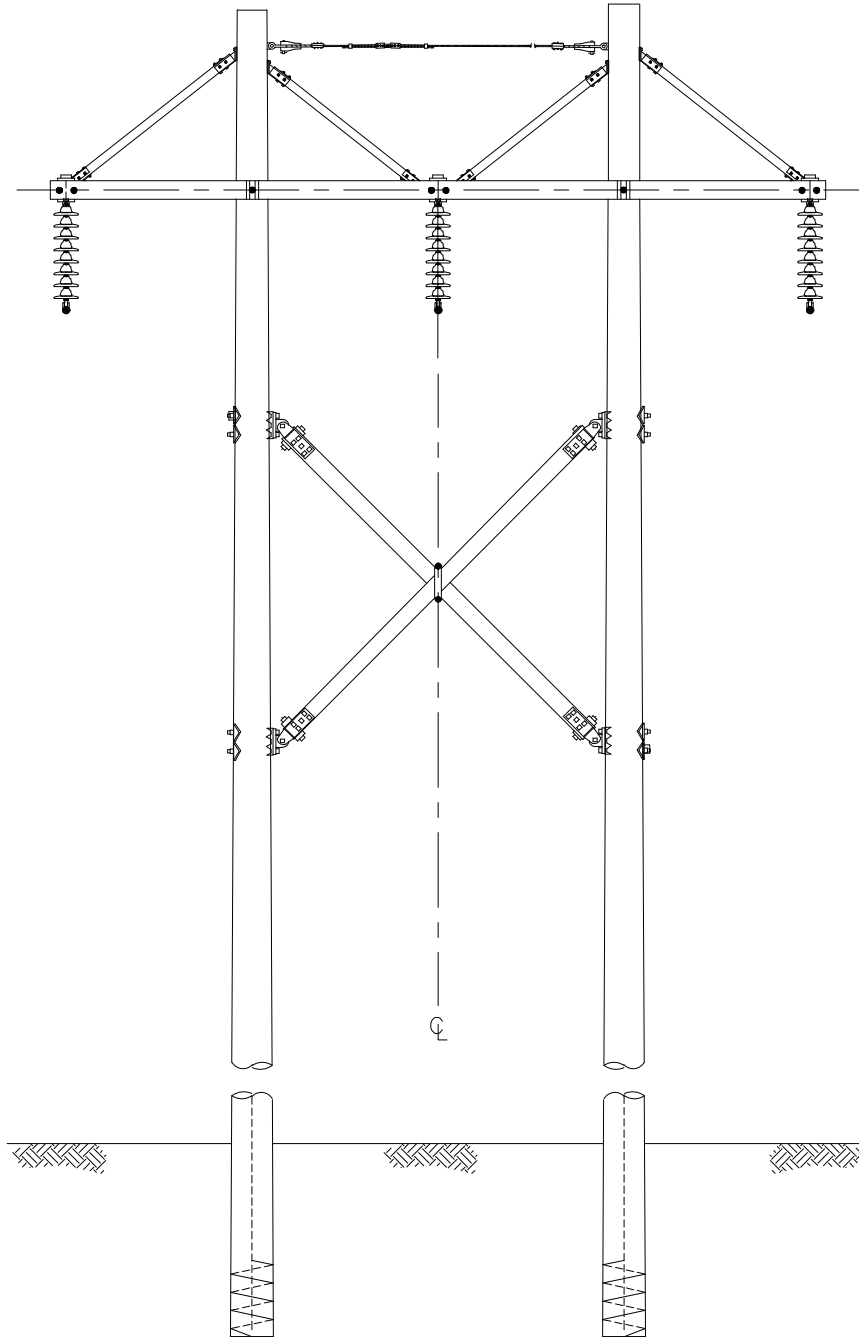


SAN DIEGO GAS & ELECTRIC
TRANSMISSION ENGINEERING

STRUCTURE DRAWINGS
SX-PQ PROJECT
TYPICAL 138 kV

SHEET 4 OF 8

73493-04



TYPICAL EXISTING 69 kV
TANGENT WOOD POLE
H-FRAME STRUCTURE

*DRAWING NOT TO SCALE

**PRELIMINARY - NOT
FOR CONSTRUCTION**



REV.	DESCRIPTION	DATE
A	FOR PLANNING PURPOSES	1/3/2014



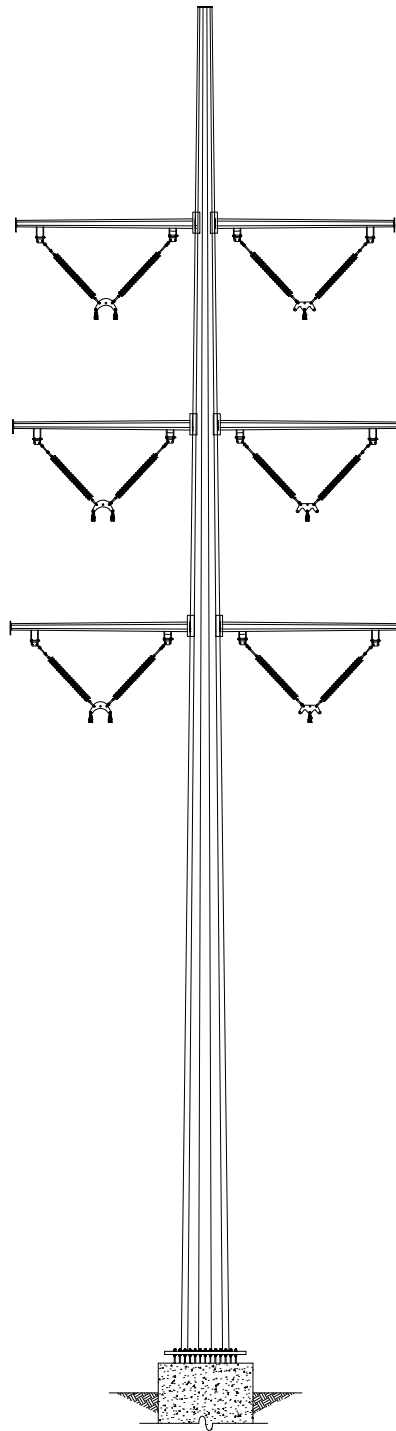
SAN DIEGO GAS & ELECTRIC
TRANSMISSION ENGINEERING

STRUCTURE DRAWINGS
SX-PQ PROJECT
TYPICAL 69 kV

SHEET 5 OF 8

73493-05

COPYRIGHT © 2014 BURNS & MCDONNELL ENGINEERING COMPANY, INC.



TYPICAL PROPOSED 230 kV
TANGENT DOUBLE CIRCUIT
TUBULAR STEEL POLE

*DRAWING NOT TO SCALE

**PRELIMINARY - NOT
FOR CONSTRUCTION**



REV.	DESCRIPTION	DATE
A	FOR PLANNING PURPOSES	1/3/2014

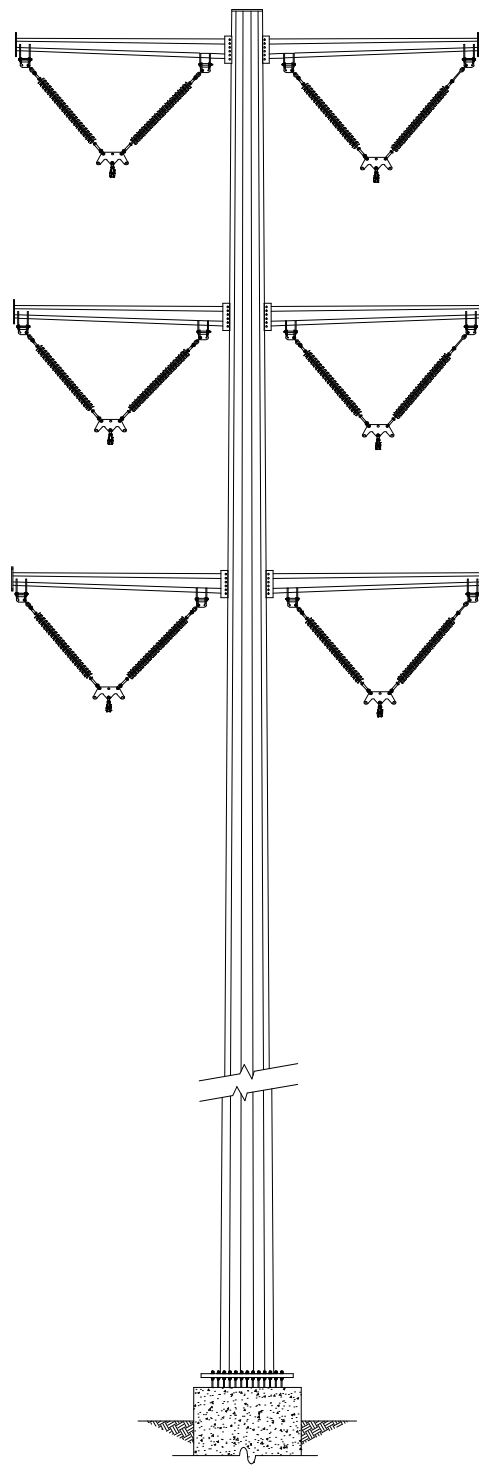
SDGE SAN DIEGO GAS & ELECTRIC
TRANSMISSION ENGINEERING
A Sempra Energy utility

SHEET 6 OF 8

STRUCTURE DRAWINGS
SX-PQ PROJECT
TYPICAL 230 kV

73493-06

COPYRIGHT © 2014 BURNS & MCDONNELL ENGINEERING COMPANY, INC.



TYPICAL PROPOSED 69 kV
TANGENT DOUBLE CIRCUIT
TUBULAR STEEL POLE

*DRAWING NOT TO SCALE

**PRELIMINARY - NOT
FOR CONSTRUCTION**



REV.	DESCRIPTION	DATE
A	FOR PLANNING PURPOSES	1/3/2014



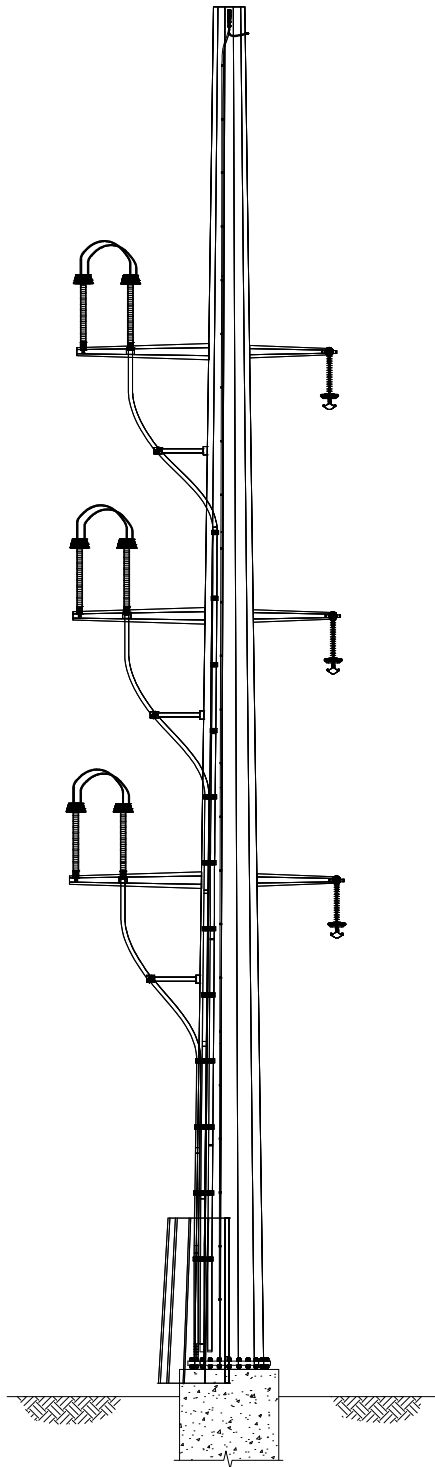
SAN DIEGO GAS & ELECTRIC
TRANSMISSION ENGINEERING

STRUCTURE DRAWINGS
SX-PQ PROJECT
TYPICAL 69 kV

SHEET 7 OF 8

73493-07

COPYRIGHT © 2014 BURNS & MCDONNELL ENGINEERING COMPANY, INC.



TYPICAL PROPOSED 230 kV
UNDERGROUND DOUBLE
CIRCUIT CABLE POLE

*DRAWING NOT TO SCALE

**PRELIMINARY - NOT
FOR CONSTRUCTION**



REV.	DESCRIPTION	DATE
A	FOR PLANNING PURPOSES	1/3/2014

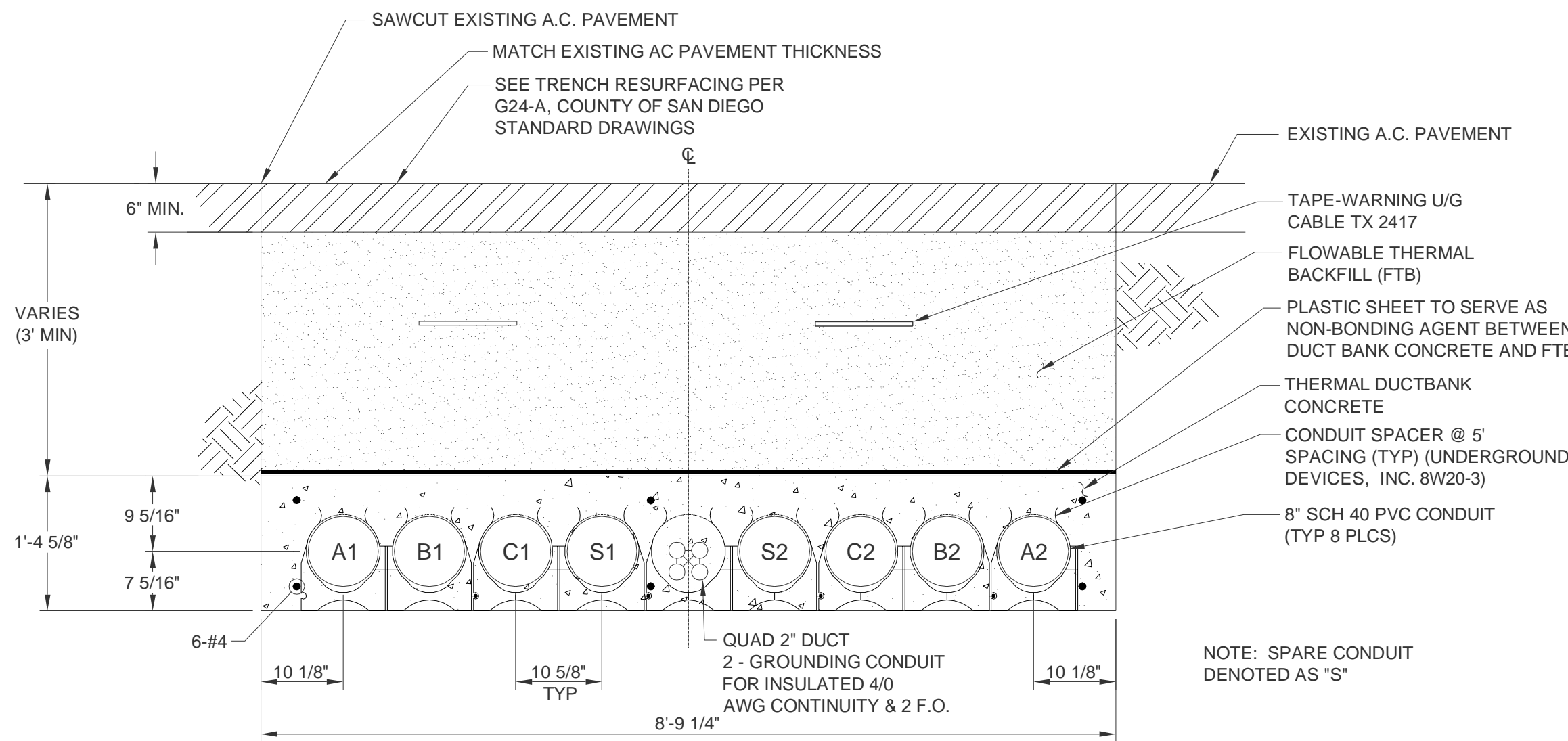
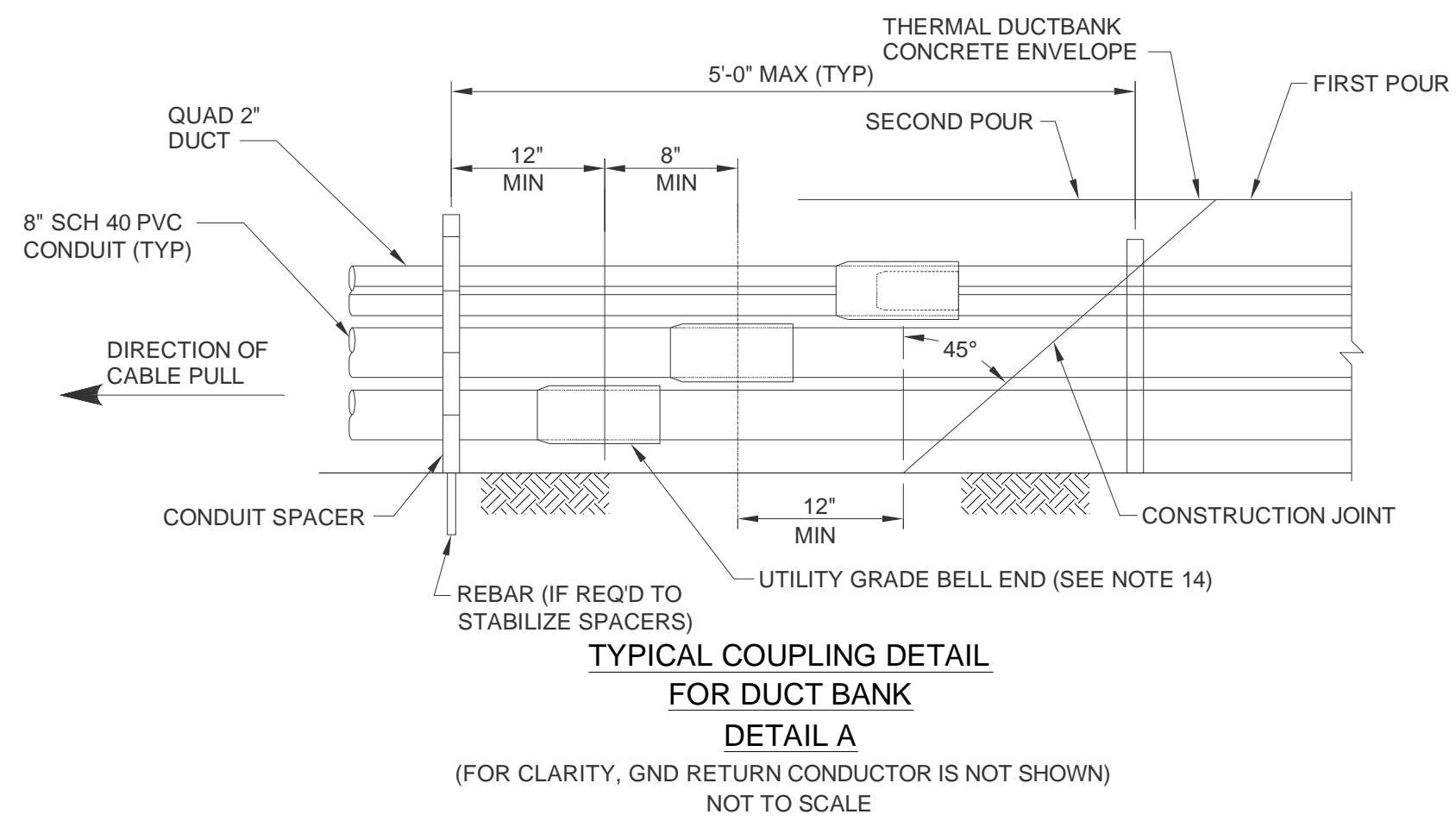


SAN DIEGO GAS & ELECTRIC
TRANSMISSION ENGINEERING

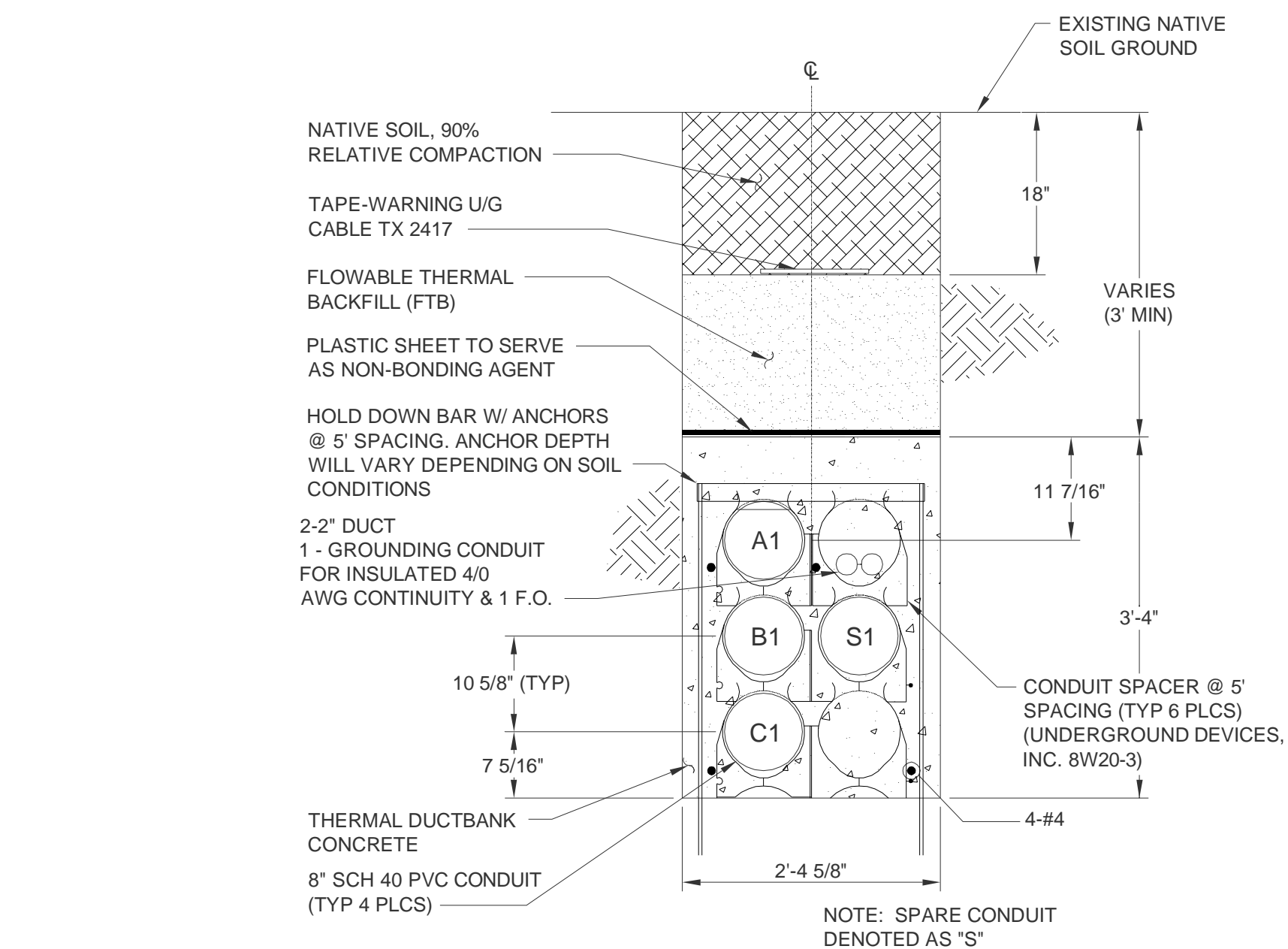
STRUCTURE DRAWINGS
SX-PQ PROJECT
TYPICAL 230 kV

SHEET 8 OF 8

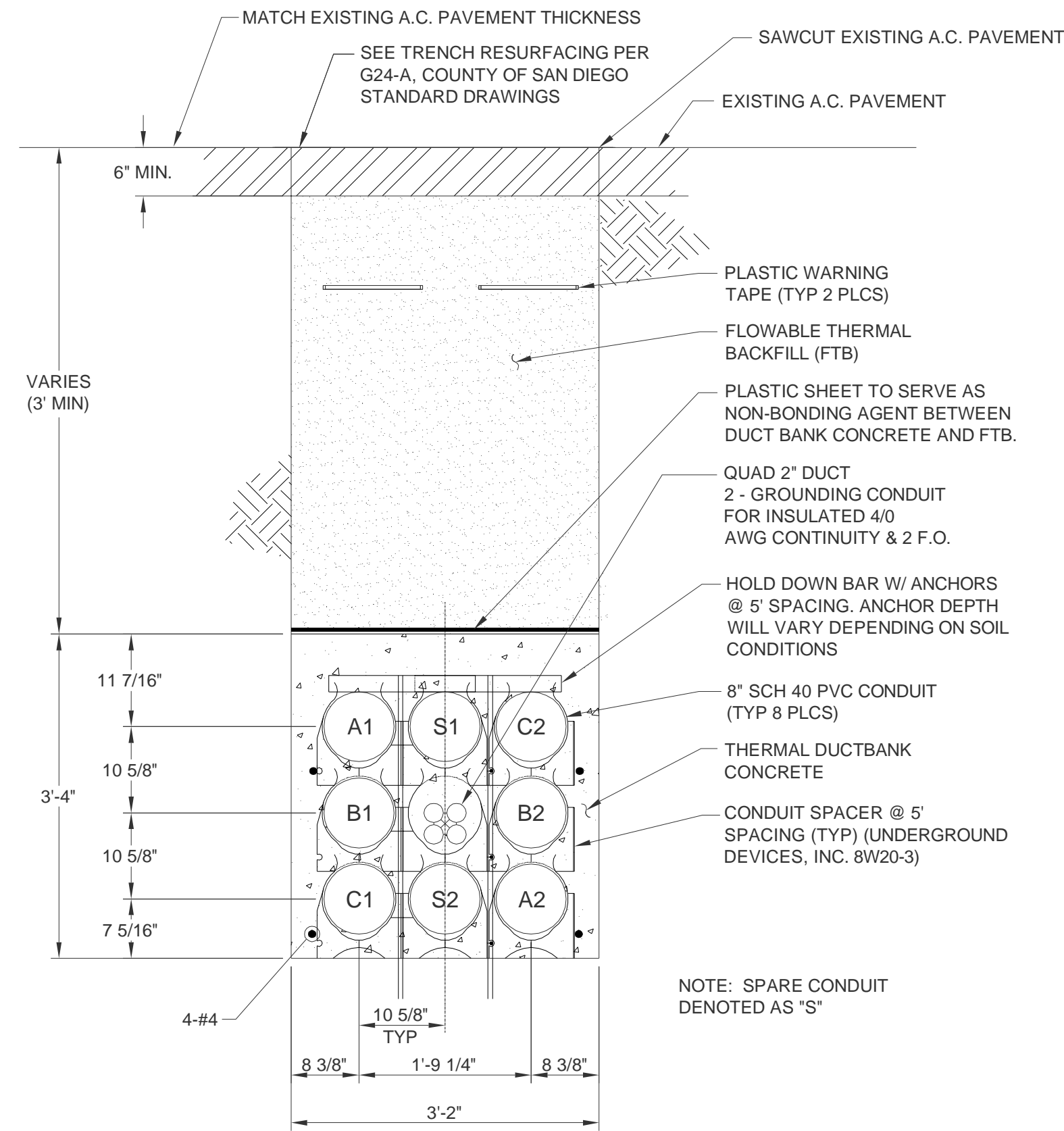
73493-08



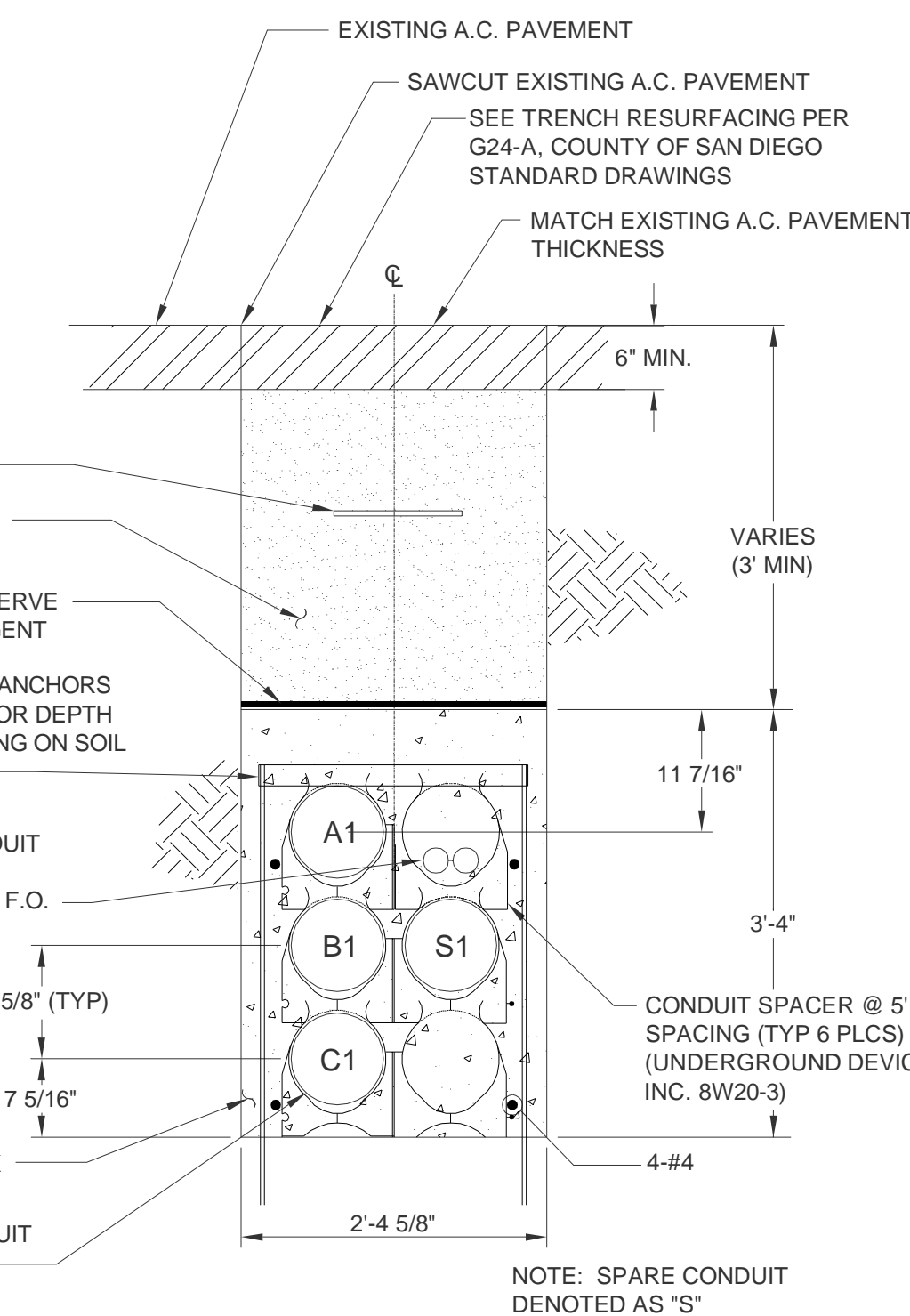
**DUCT BANK DETAIL 5
SIX CABLES IN EIGHT INCH CONDUIT (HORZ.)
PAVEMENT SECTION AREA
NOT TO SCALE**



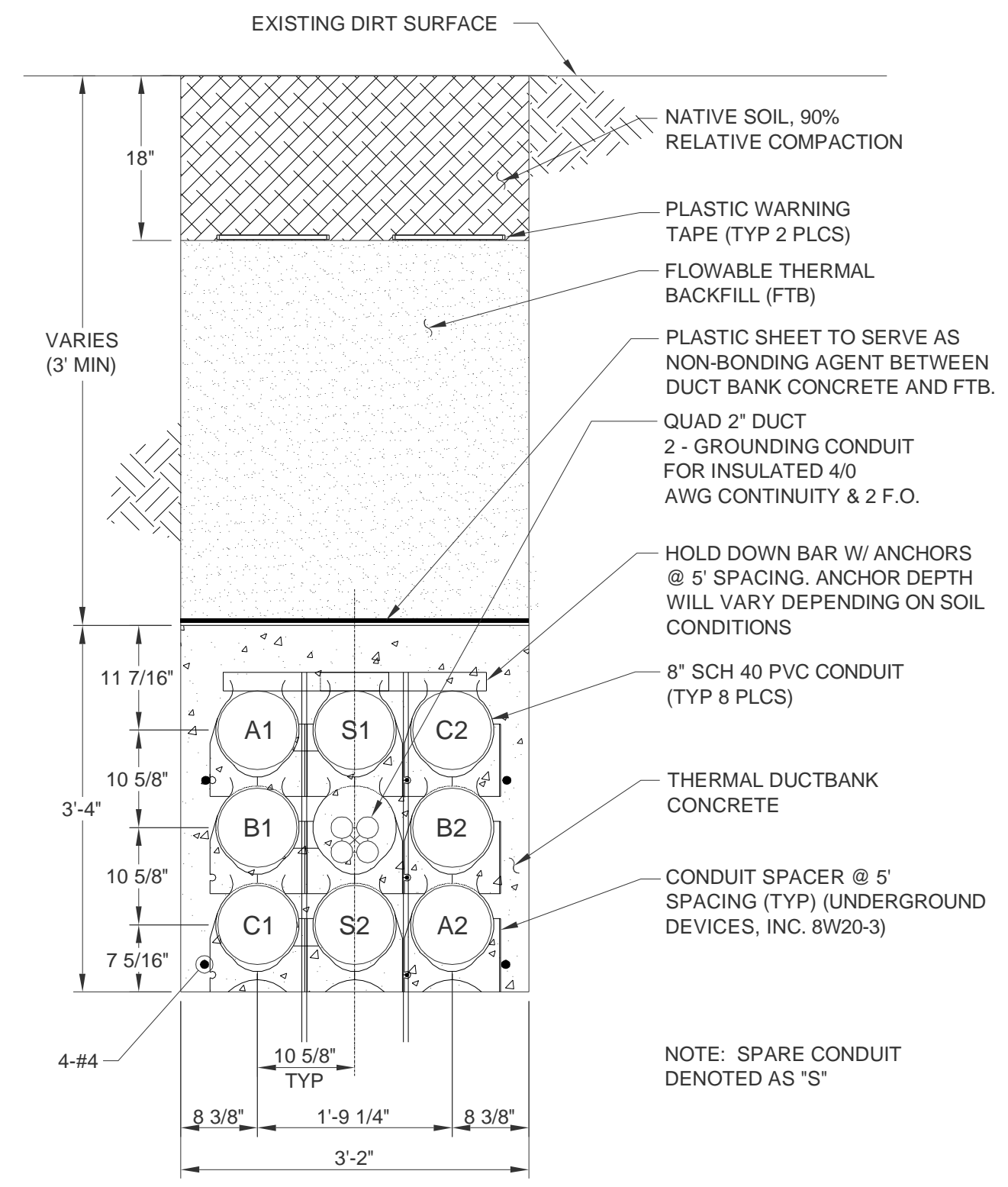
**DUCT BANK DETAIL 3
3 CABLES IN EIGHT INCH CONDUIT (VERTICAL)
DIRT SURFACE (ROW SECTION)
NOT TO SCALE**



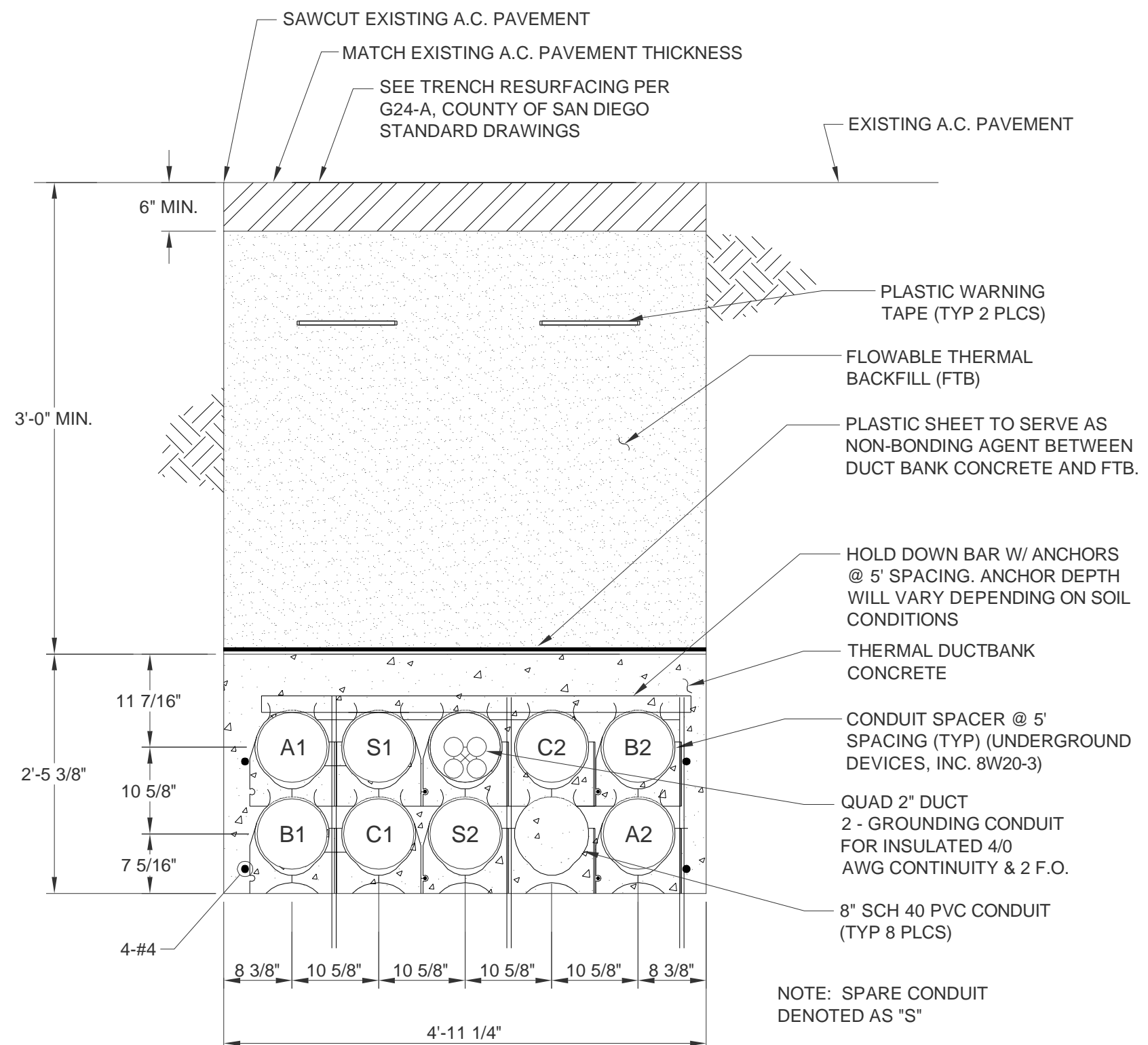
**DUCT BANK DETAIL 1
PAVEMENT SECTION
NOT TO SCALE**



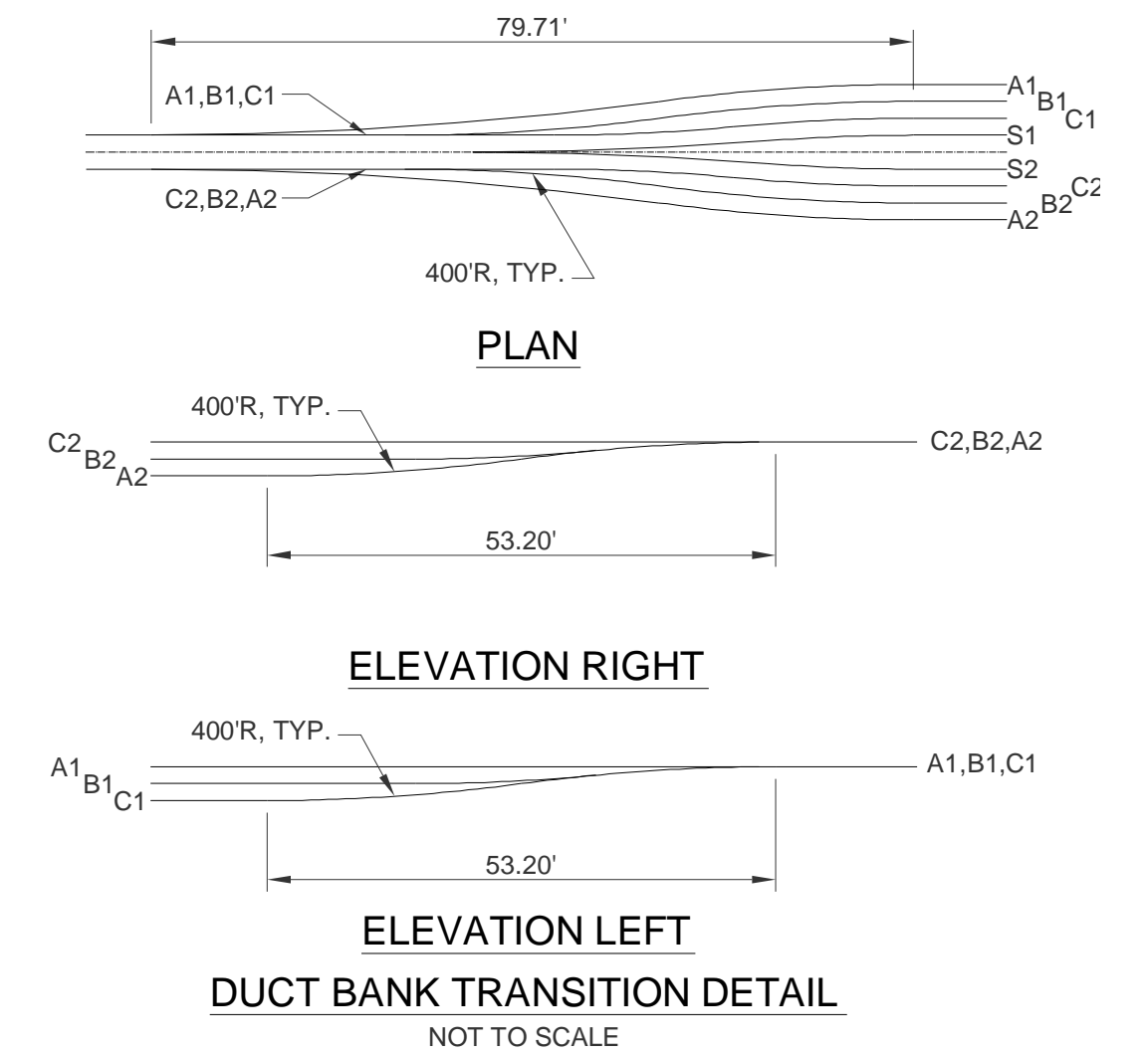
**DUCT BANK DETAIL 4
3 CABLES IN EIGHT INCH CONDUIT (VERTICAL)
PAVEMENT (ROW SECTION)
NOT TO SCALE**



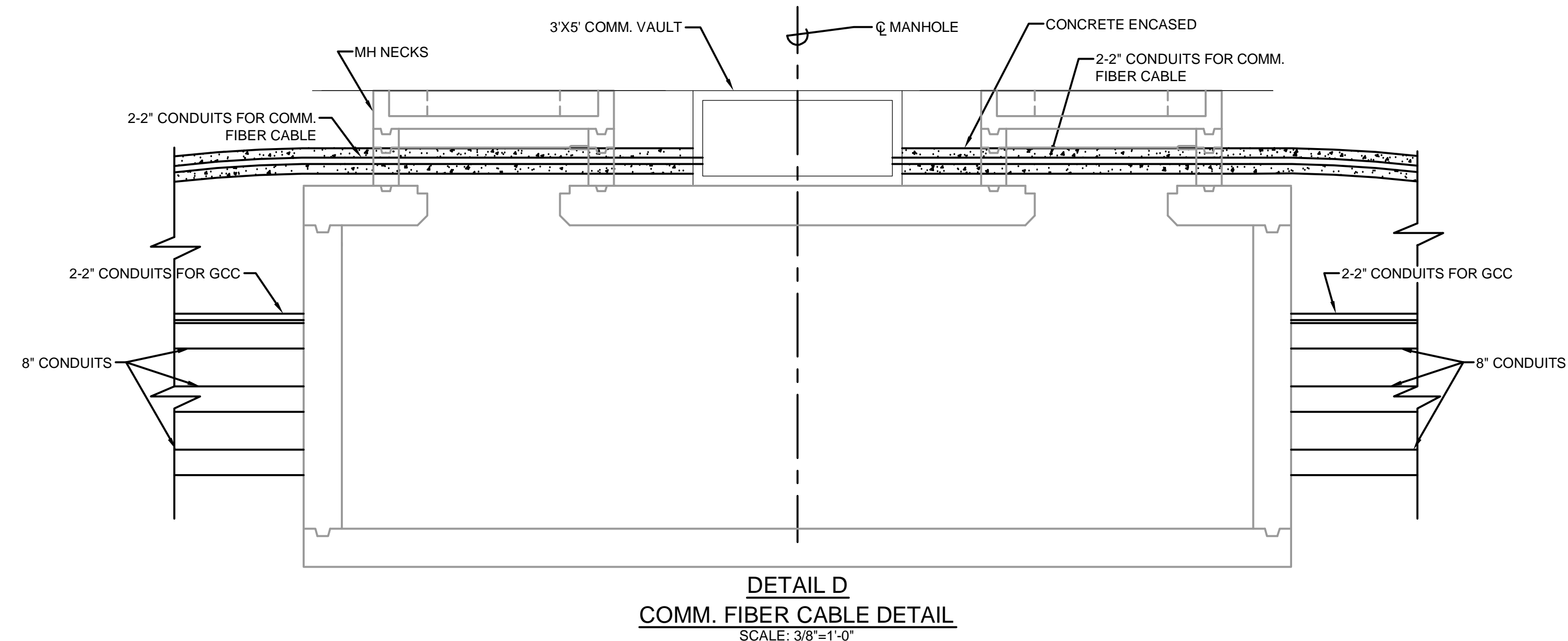
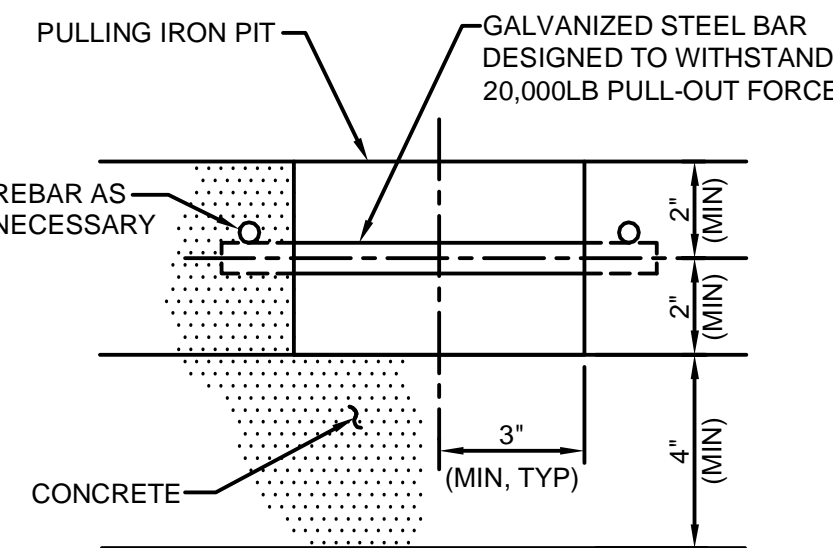
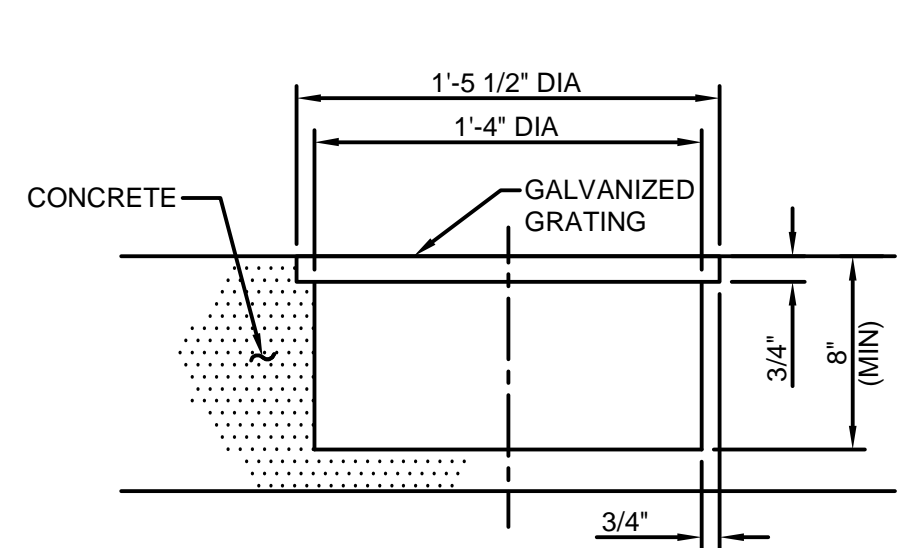
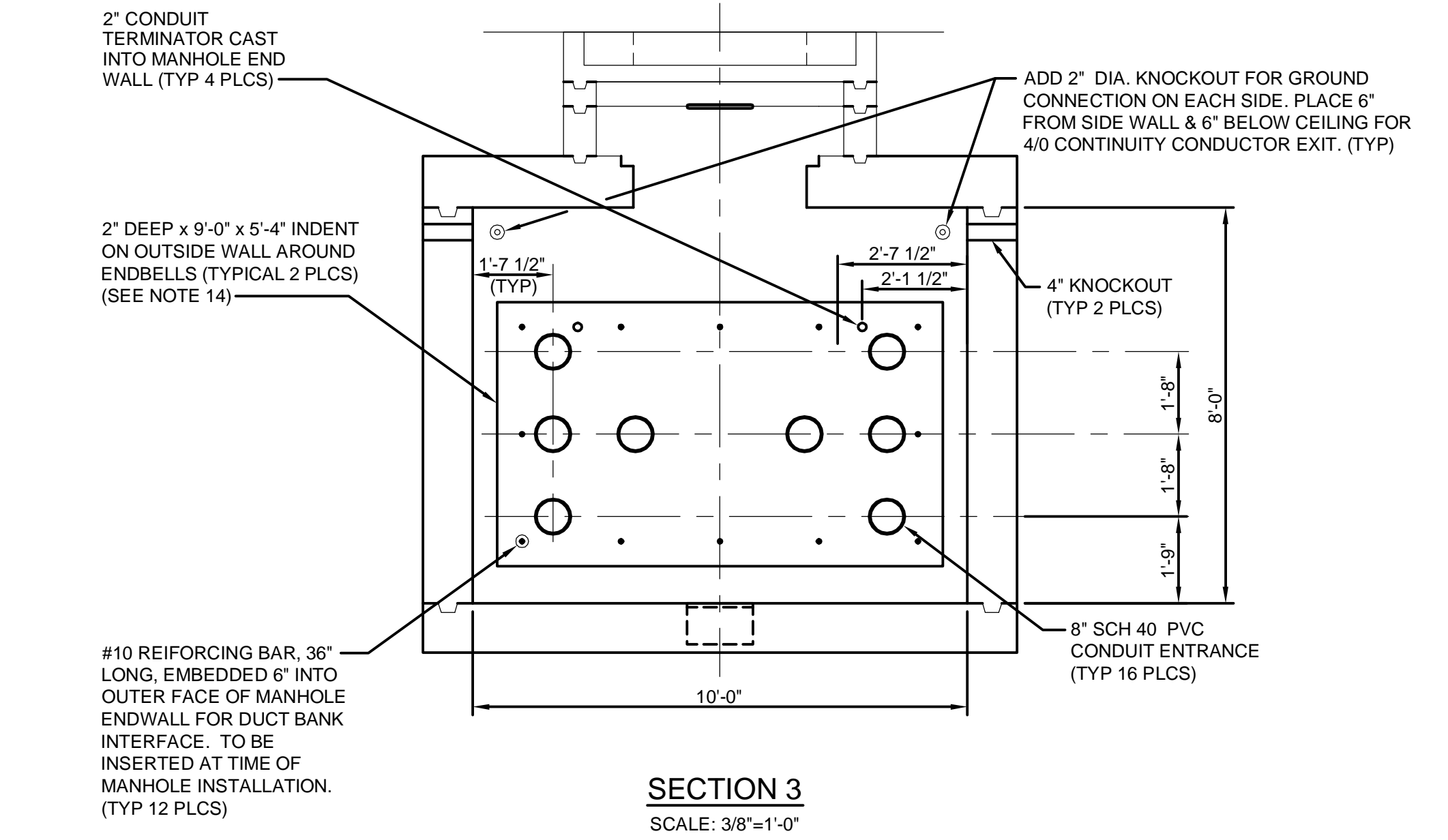
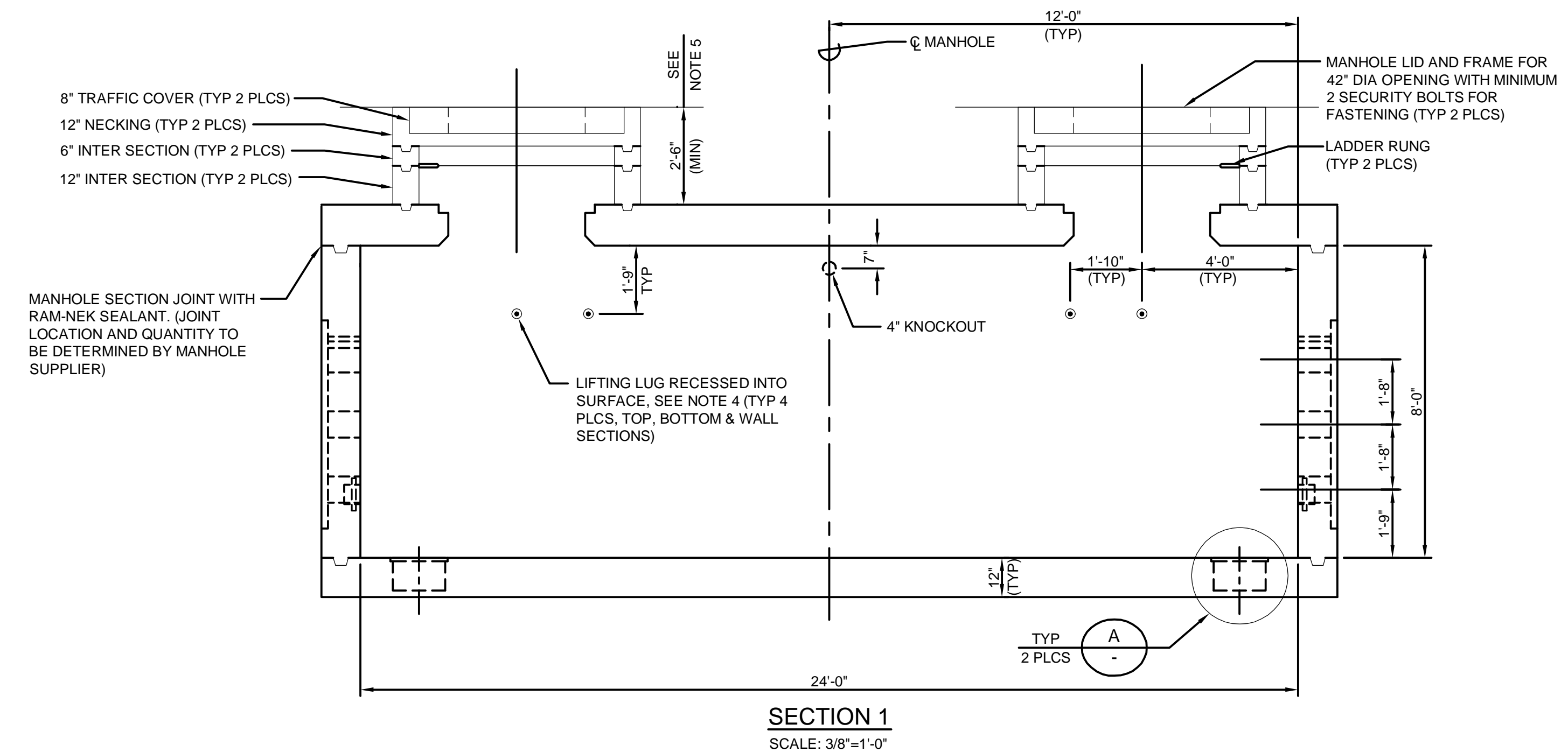
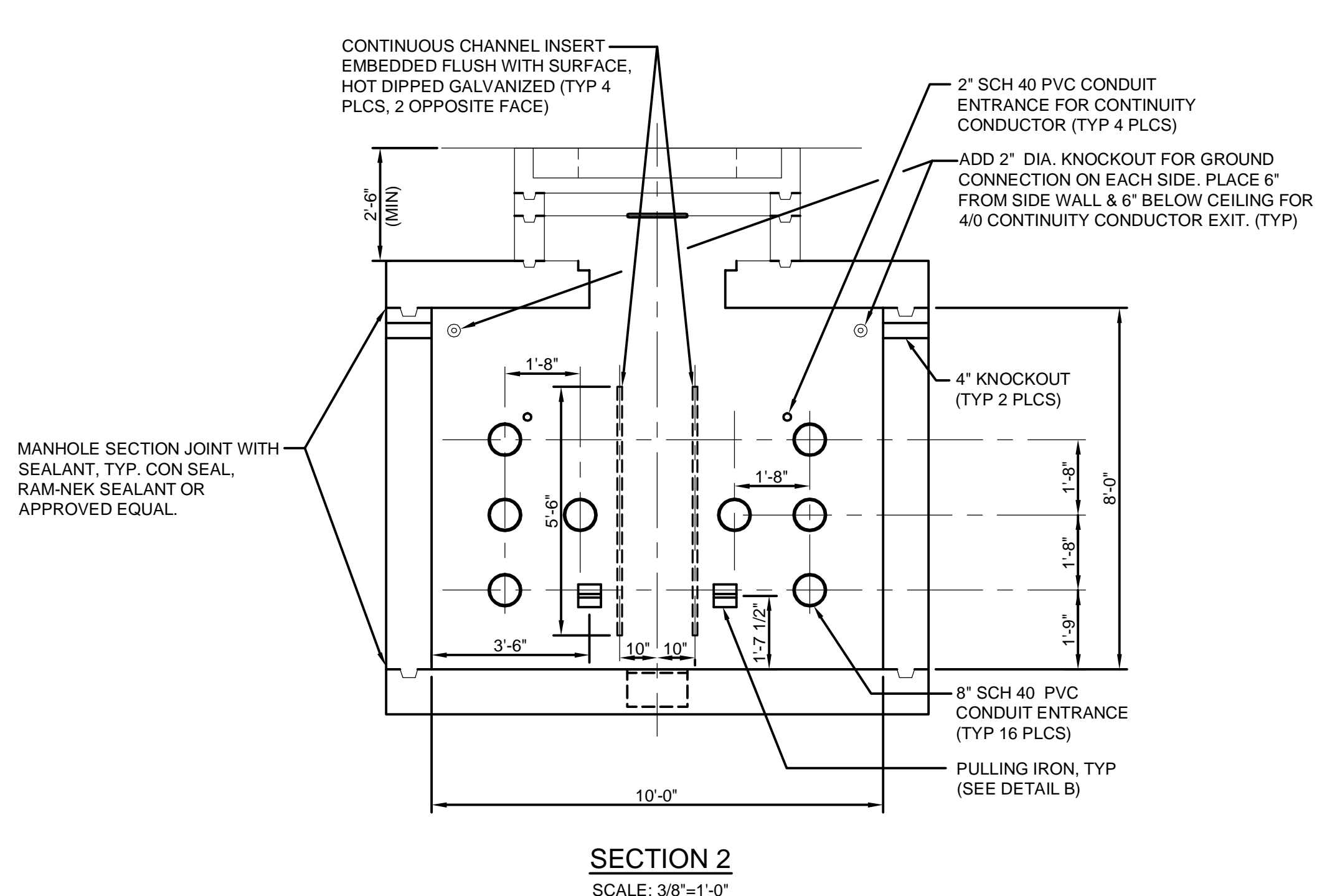
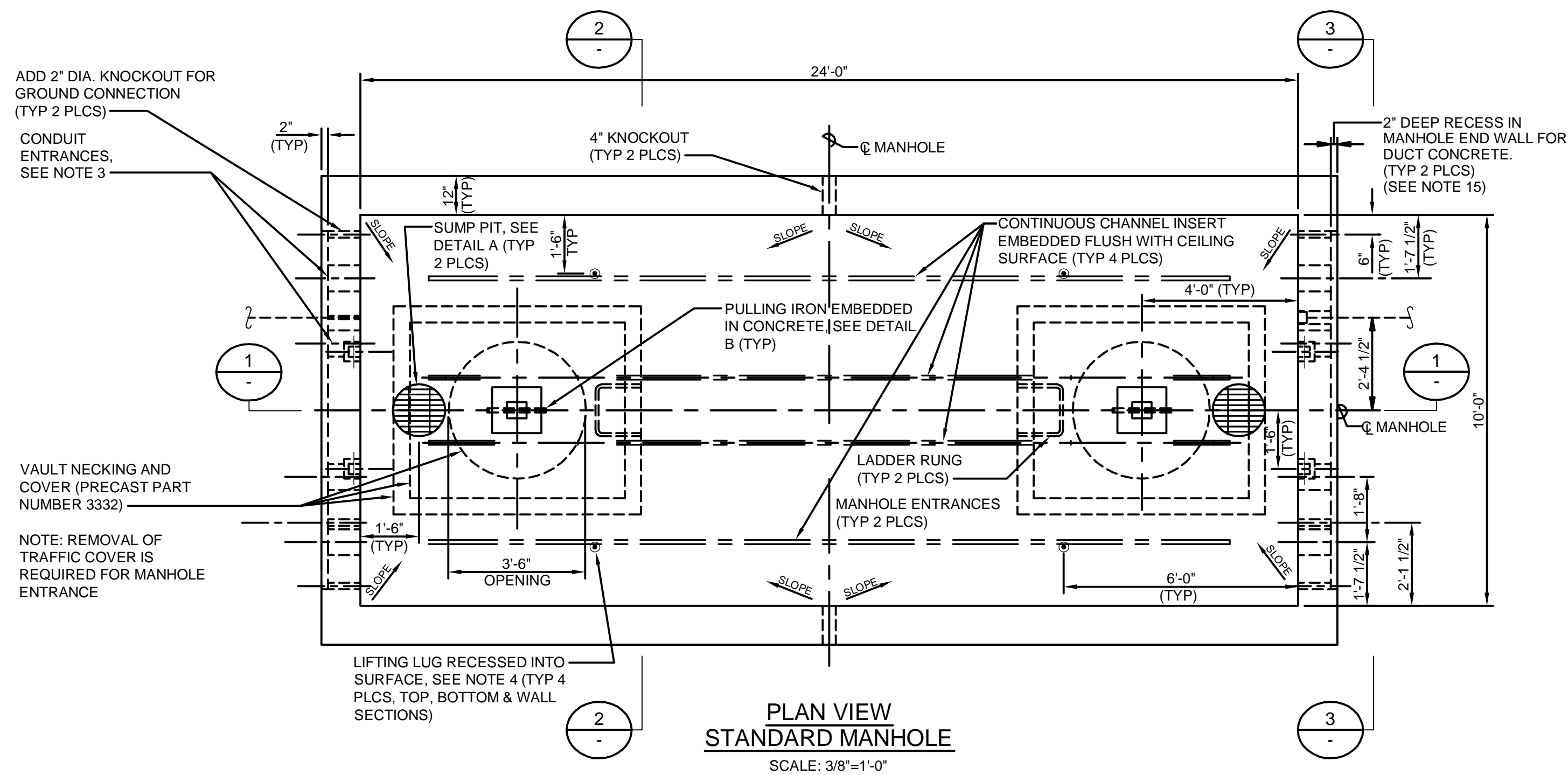
**DUCT BANK DETAIL 2
DIRT SURFACE (ROW SECTION)
NOT TO SCALE**



**DUCT BANK DETAIL 7
PAVEMENT SECTION
NOT TO SCALE**



**DUCT BANK TRANSITION DETAIL
NOT TO SCALE**



REV	BUDGET	CONST ORDER	CHANGE	DRAWN	CHK'D	APP'VD	DATE	REV	BUDGET	CONST ORDER	CHANGE	DRAWN	CHK'D	APP'VD	DATE
-----	--------	-------------	--------	-------	-------	--------	------	-----	--------	-------------	--------	-------	-------	--------	------