



2024 PUBLIC SAFETY POWER SHUTOFF (PSPS) TABLETOP EXERCISE

April 11th, 2024



WELCOME REMARKS

Administrative Remarks and Safety Message



Attendance



Cell Phone/
Microphone Etiquette



Safety / Emergency
Information

Schedule of Events



TIME	EVENT
0800 - 0815	PARTICIPANT ARRIVAL
0815 - 0830	WELCOME/ INTRODUCTIONS
0830 - 0845	STARTEX - EXERCISE OVERVIEW
0845 - 1015	MODULE ONE (STAGE 1)
1015 - 1030	BREAK
0930 - 1000	MODULE TWO (STAGES 2 & 3)
1130 - 1200	MODULE THREE (STAGES 4 & 5)
1200 - 1230	HOTWASH/CLOSING REMARKS
1230 - 1330	LUNCH / EOC TOUR



EXERCISE OVERVIEW

Exercise Overview



The PSPS TTX is designed to:

- Adhere to CPUC guidelines
- Provide a forum for internal participants and external stakeholders to discuss relevant topics to enhance their knowledge and understanding of PSPS activities.
- Focus on the notification processes and procedures for each PSPS stage of SDG&E operations and how these pertain to both SDG&E personnel, public safety partners, and the public.

Duration: 0830 - 1230



Participants:

- SDG&E
- Public Safety Partners



Location:

SDG&E Auditorium



Structure:

Facilitated, modular format with plenary discussion



Scenario:

Public Safety Power Shut Off (PSPS) event



Exercise Objectives

- ✓ **Planning:** Enhance participants knowledge and understanding of all applicable SDG&E PSPS protocols, plans, and procedures.
- ✓ **Operational Coordination:** Demonstrate an understanding and readiness to implement and execute all stages of PSPS operations in alignment with existing SDG&E protocols and procedures.
- ✓ **Public Information & Warning:** Discuss the coordination and delivery of the various public information messages required during a PSPS incident.
- ✓ **Operational Communication:** Discuss the required communications between and amongst SDG&E and external partners to synchronize operations throughout the stages of PSPS response.

Exercise Guidelines

SDG&E PSPS TABLETOP EXERCISE



This is an open, no-fault environment; capabilities, plans, systems, and processes (not individuals) will be discussed



Engage in discussion utilizing knowledge of current plans, capabilities, and insights derived from your current position training & experience



- Discuss and present multiple options/ possible solutions
- Gain understanding and familiarity of the subject matter



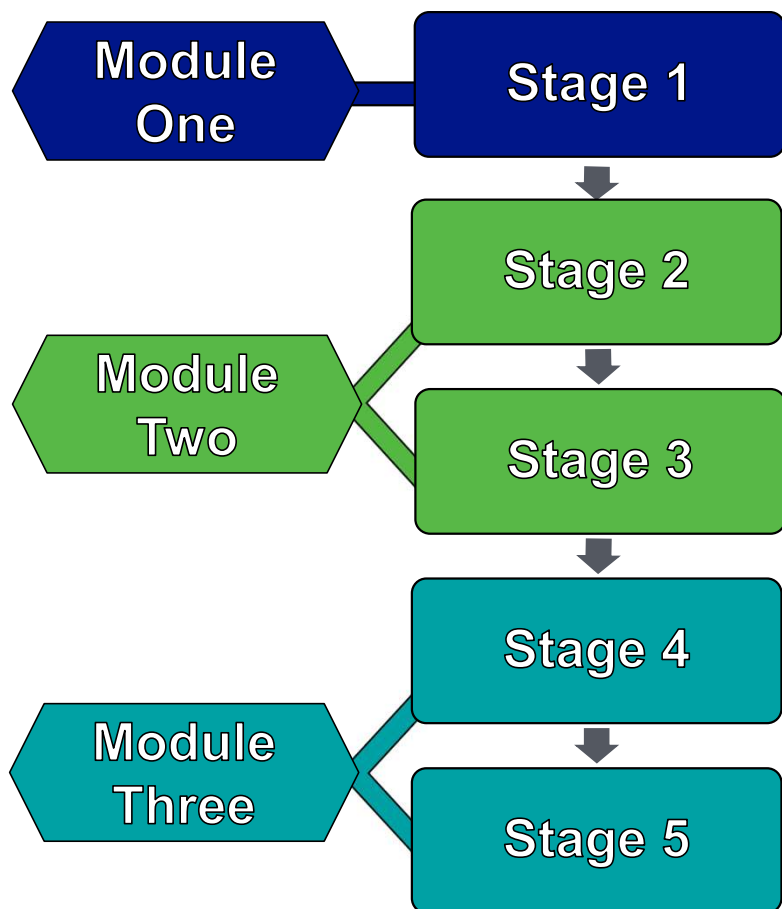
- Avoid side conversations
- Engage with the facilitator
- Raise your hand when you wish to speak

Exercise Assumptions & Artificialities

In any tabletop exercise (TTX), assumptions may be necessary to focus discussion and accomplish the intended objectives in the time allotted. This TTX will adhere to the following:

- ✓ This exercise scenario is plausible, and events occur as presented.
- ✓ Certain interactions may focus on topics outside of the proposed scenario, serving as hypothetical discussions that are relevant to accomplishing the exercise objectives.
- ✓ Although not executing actual operational activities, attendees should consider their real-life roles and experiences when discussing proposed topics, interacting with other attendees, offering observations to the forum, and discussing relevant decisions and actions.

Exercise Structure



Activating PSPS Protocols/ Potential to De-energize

When SDG&E has determined, due to high fire risk conditions, that it may pro-actively de-energize parts of its infrastructure - notifications begin

Decision to De-energize

In pre-identified areas that are threatened by high fire risk conditions. This is combined with Stage 3 at SDG&E

De-energization Initiated

SDG&E has begun the process of shutting off power to areas determined in prior notifications/ stages of the PSPS event

Initiating Re-energization Protocols

It's determined that the weather event has subsided and power lines can now be inspected for safety so that re-energization can take place

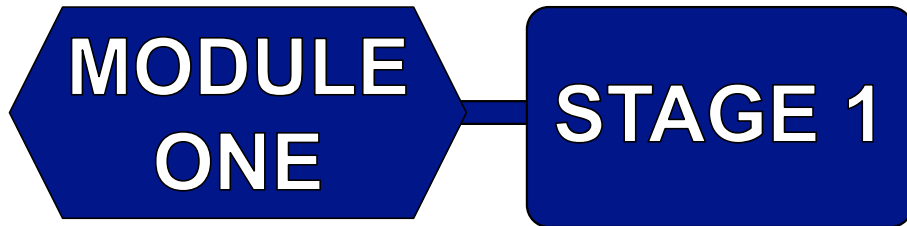
All PSPS Lines Re-energized

All lines de-energized by the PSPS event have been restored re-energized



MODULE ONE: ACTIVATING PSPS PROTOCOLS/ POTENTIAL TO DE-ENERGIZE

Module Overview



Activating PSPS Protocols/Potential to De-energize

When SDG&E has determined, due to high fire risk conditions, that it may pro-actively de-energize parts of its infrastructure - notifications begin

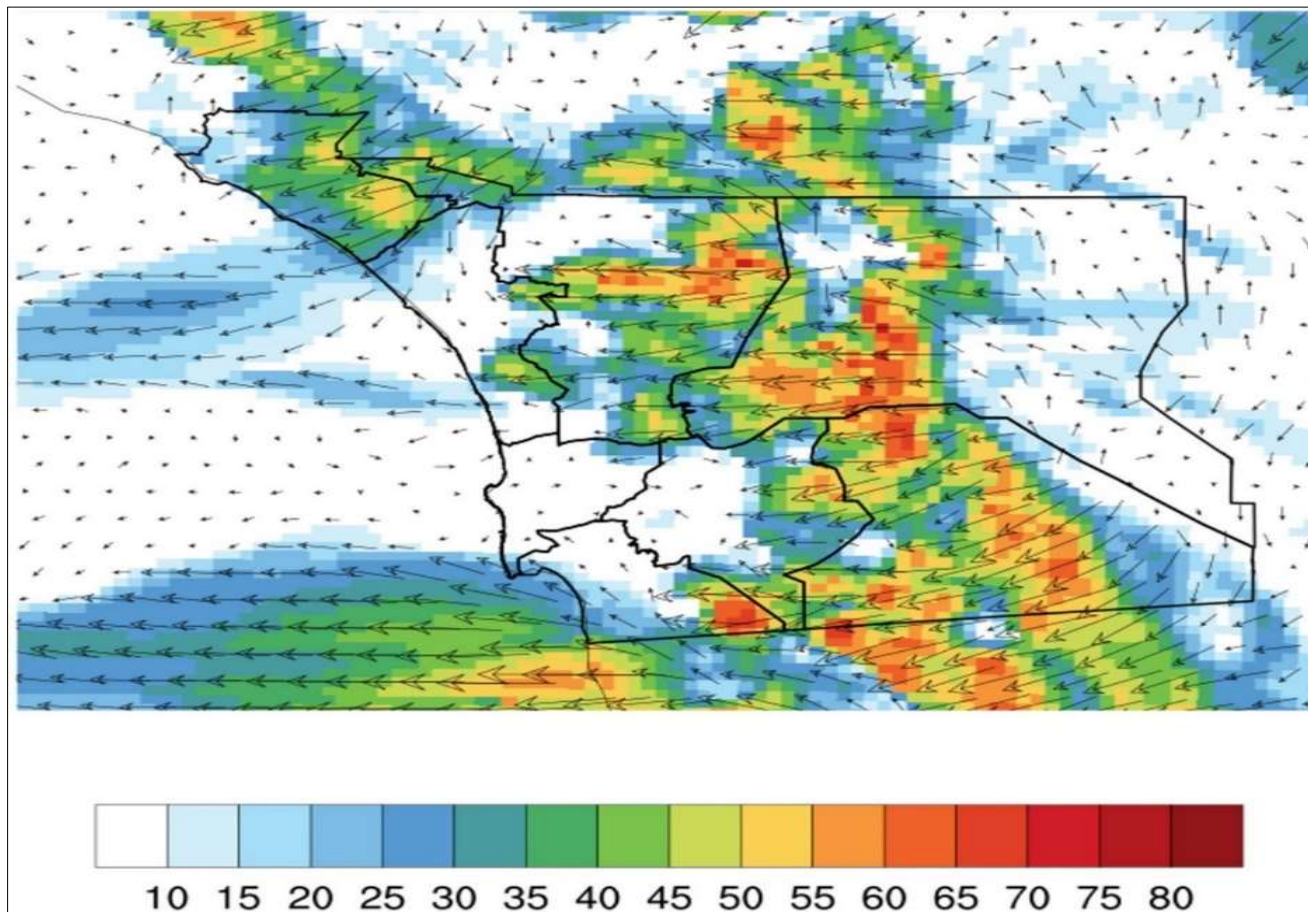


MODULE 1 DISCUSSION

DISCUSSION TOPICS

**Decision to
Activate PSPS
Protocols**

Scenario Update – 72 Hours Ahead



Scenario Update, Continued – 72 Hours Ahead

	Mon 4/08	Tue 4/09	Wed 4/10	Thu 4/11	Fri 4/12	Sat 4/13	Sun 4/14
ME	Elevated 13	Elevated 13	Elevated 14	Extreme 16	Elevated 14	Elevated 13	Elevated 12
RA	Elevated 13	Elevated 13	Elevated 14	Extreme 16	Elevated 14	Elevated 13	Elevated 12
EA	Elevated 13	Elevated 13	Elevated 13	Extreme 15	Elevated 14	Elevated 13	Normal 11
NE	Elevated 13	Elevated 13	Elevated 13	Extreme 15	Elevated 14	Elevated 13	Normal 11
OC	Normal 11	Elevated 12	Elevated 13	Extreme 15	Elevated 14	Elevated 13	Normal 11
NC	Normal 11	Normal 11	Elevated 13	Extreme 15	Elevated 13	Elevated 12	Normal 11
BC	Normal 11	Normal 11	Elevated 13	Extreme 15	Elevated 13	Elevated 12	Normal 11
CM	Normal 11	Normal 11	Elevated 13	Extreme 15	Elevated 13	Elevated 12	Normal 11

Scenario Update, Continued – 72 Hours Ahead



SANTA ANA WILDFIRE THREAT INDEX

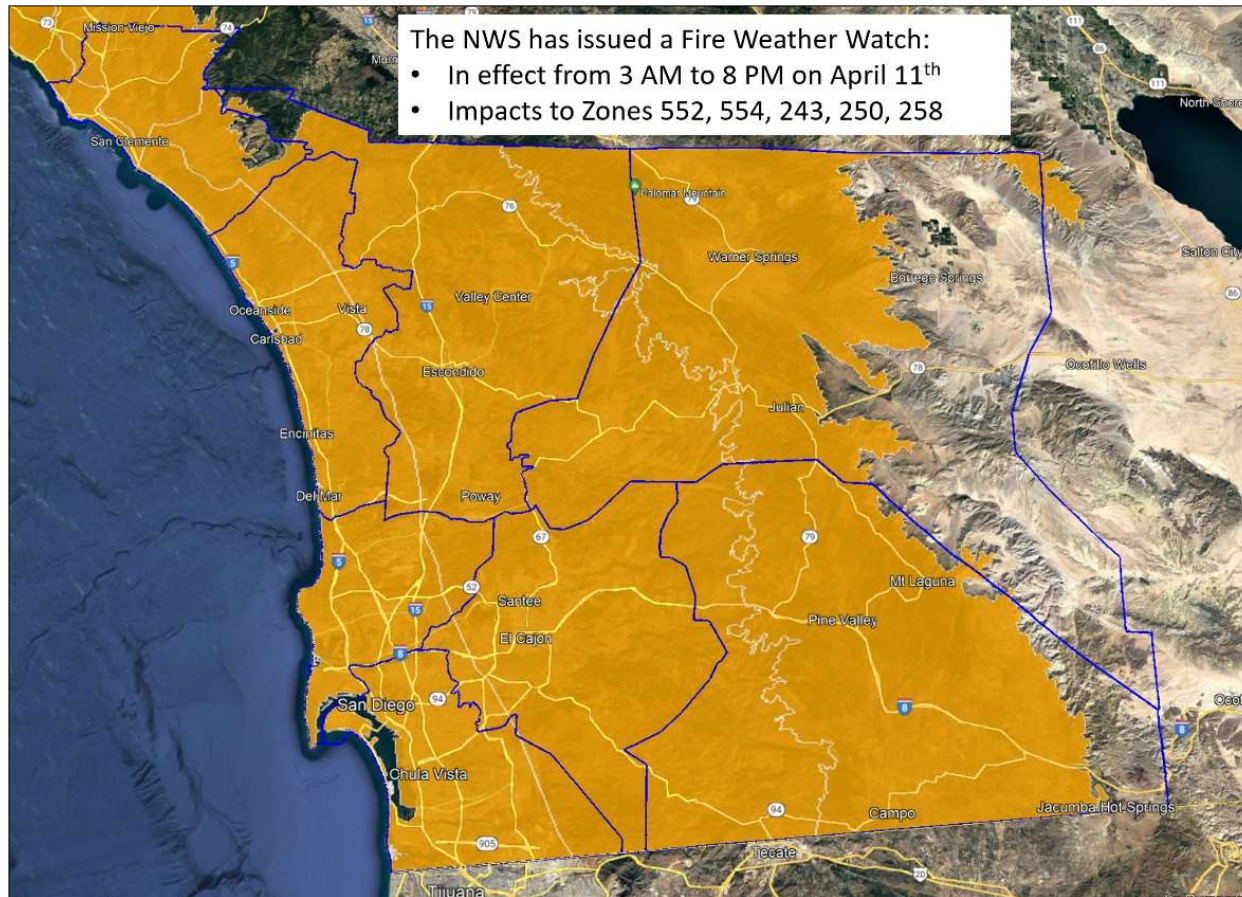


Zones	Mon/Apr 8	Tue/Apr 9	Wed/Apr 10	Thu/Apr 11	Fri/Apr 12	Sat/Apr 13
Zone 1: LA-Ventura						
Zone 2: Orange-Inland Empire						
Zone 3: San Diego						
Zone 4: Santa Barbara						

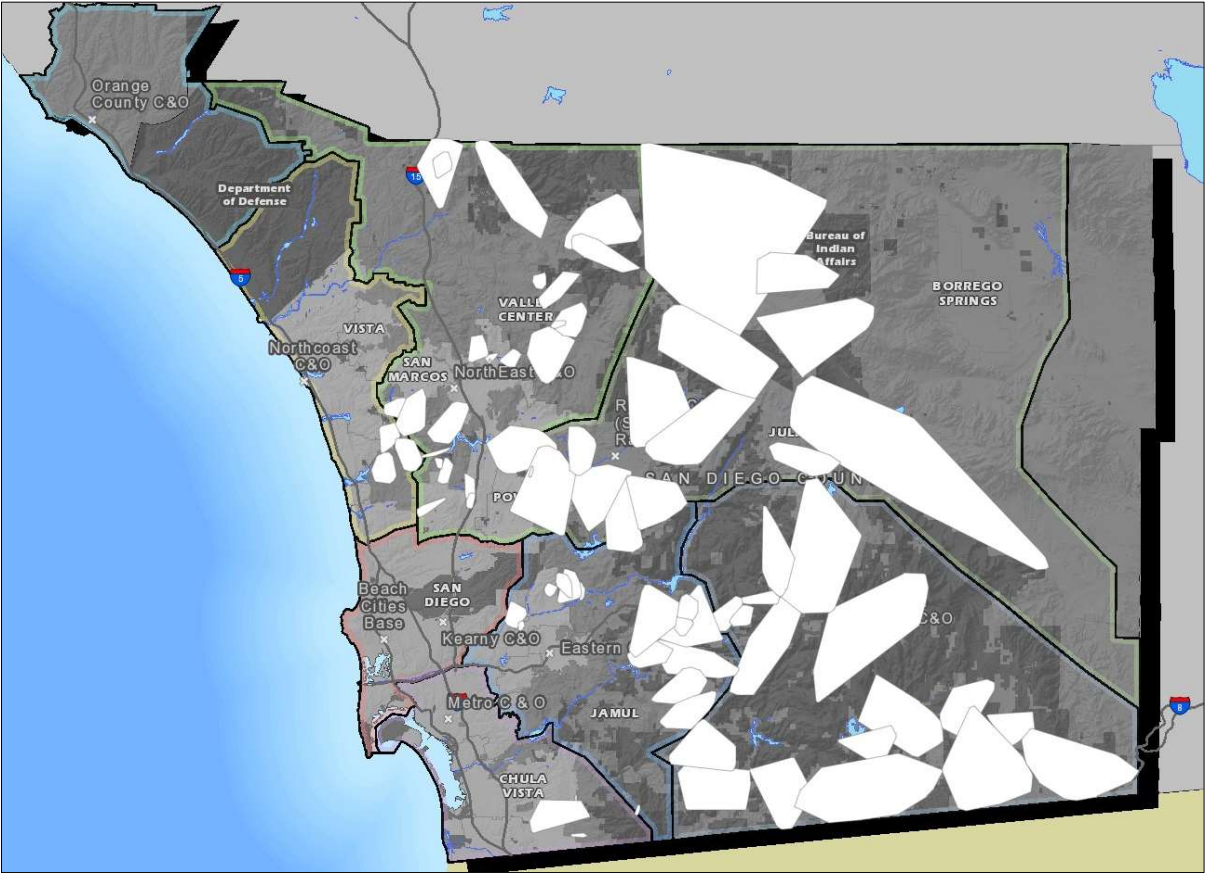
NO RATING	Winds are either not expected, will not contribute to significant fire activity.
MARGINAL	Upon ignition, fires may grow rapidly.
MODERATE	Upon ignition, fires will grow rapidly and will be difficult to control.
HIGH	Upon ignition, fires will grow very rapidly, will burn intensely, and will be very difficult to control.
EXTREME	Upon ignition, fires will have extreme growth, will burn very intensely, and will be uncontrollable.

SANTA ANA WILDFIRE THREAT INDEX (SAWTI)

Scenario Update, Continued – 72 Hours Ahead



Scenario Update, Continued – 72 Hours Ahead



Impacted	Meters
Total Unique Meters	42204

Please note, meters do not equate to the number of household members per meter.





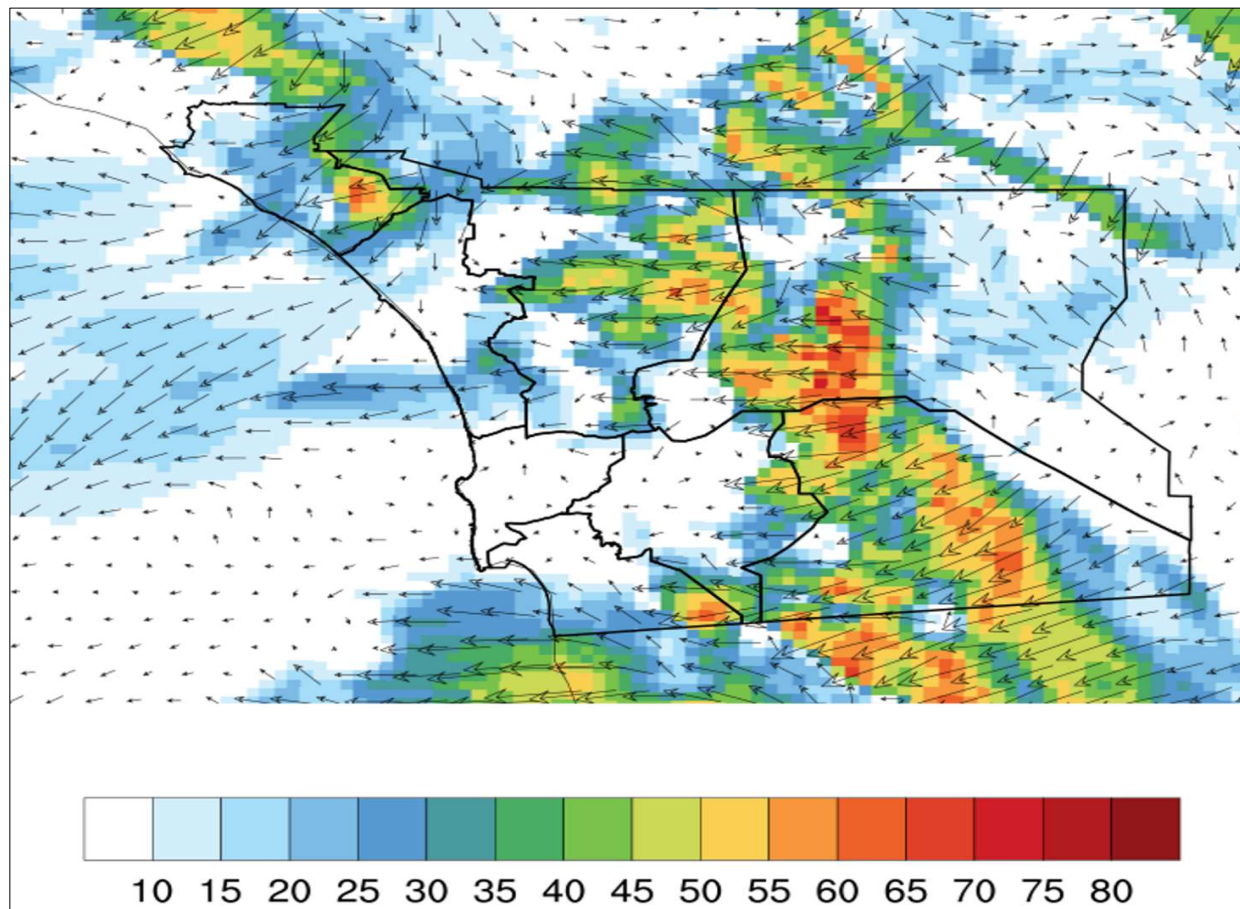
MODULE 1 DISCUSSION

DISCUSSION TOPICS

**Operational
Considerations**

**Notification/
Communication**

Scenario Update – 48 Hours Ahead



Scenario Update, Continued – 48 Hours Ahead

	Tue 4/09	Wed 4/10	Thu 4/11	Fri 4/12	Sat 4/13	Sun 4/14	Mon 4/15
ME	Elevated 13	Elevated 13	Extreme 16	Elevated 14	Elevated 13	Elevated 12	Elevated 12
RA	Elevated 13	Elevated 13	Extreme 16	Elevated 14	Elevated 13	Elevated 12	Elevated 12
EA	Elevated 13	Elevated 13	Extreme 15	Elevated 14	Elevated 13	Normal 11	Normal 11
NE	Elevated 13	Elevated 13	Extreme 15	Elevated 14	Elevated 13	Normal 11	Normal 11
OC	Elevated 12	Elevated 13	Extreme 15	Elevated 14	Elevated 13	Normal 11	Normal 11
NC	Normal 11	Elevated 12	Extreme 15	Elevated 13	Elevated 12	Normal 11	Normal 11
BC	Normal 11	Elevated 12	Elevated 14	Elevated 13	Elevated 12	Normal 11	Normal 11
CM	Normal 11	Elevated 12	Elevated 14	Elevated 13	Elevated 12	Normal 11	Normal 11

Scenario Update, Continued – 48 Hours Ahead



SANTA ANA WILDFIRE THREAT INDEX

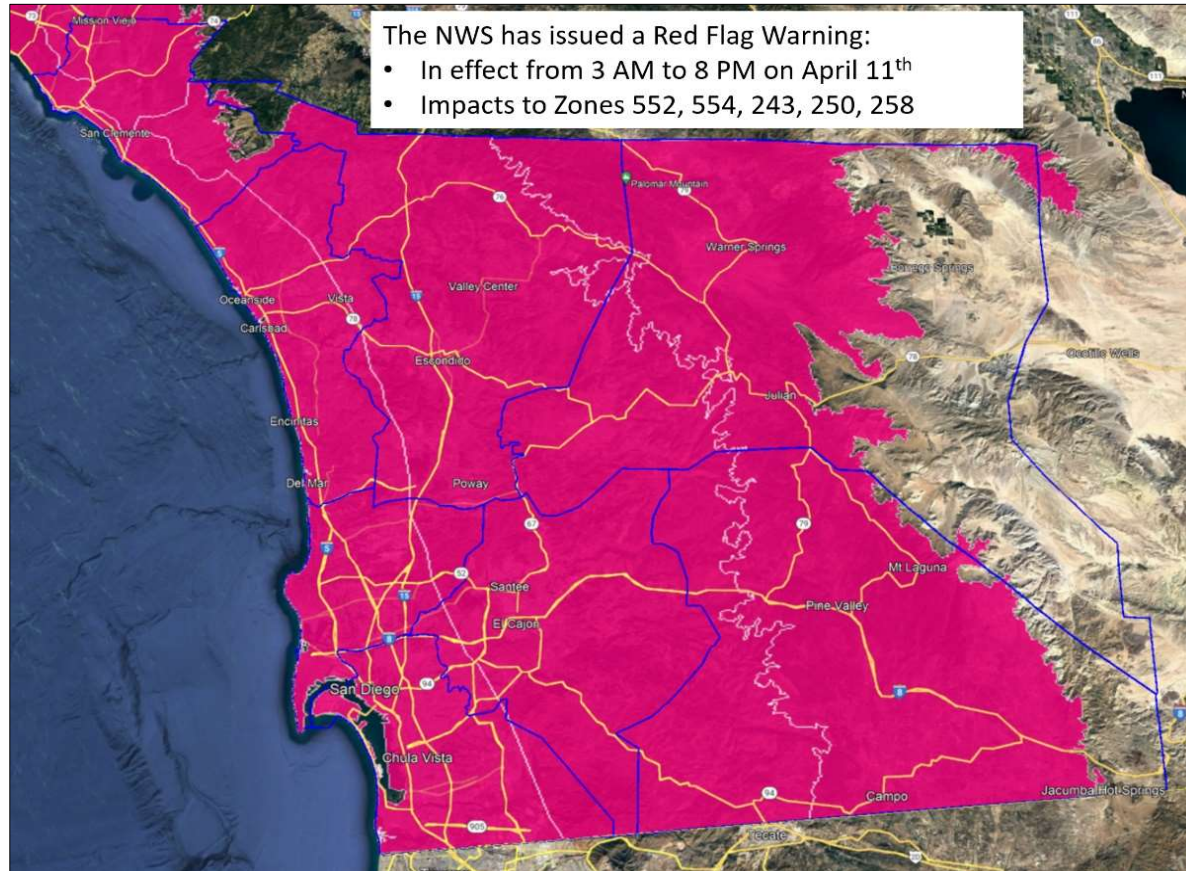


Zones	Tue/Apr 9	Wed/Apr 10	Thu/Apr 11	Fri/Apr 12	Sat/Apr 13	Sun/Apr 14
Zone 1: LA-Ventura						
Zone 2: Orange-Inland Empire						
Zone 3: San Diego						
Zone 4: Santa Barbara						

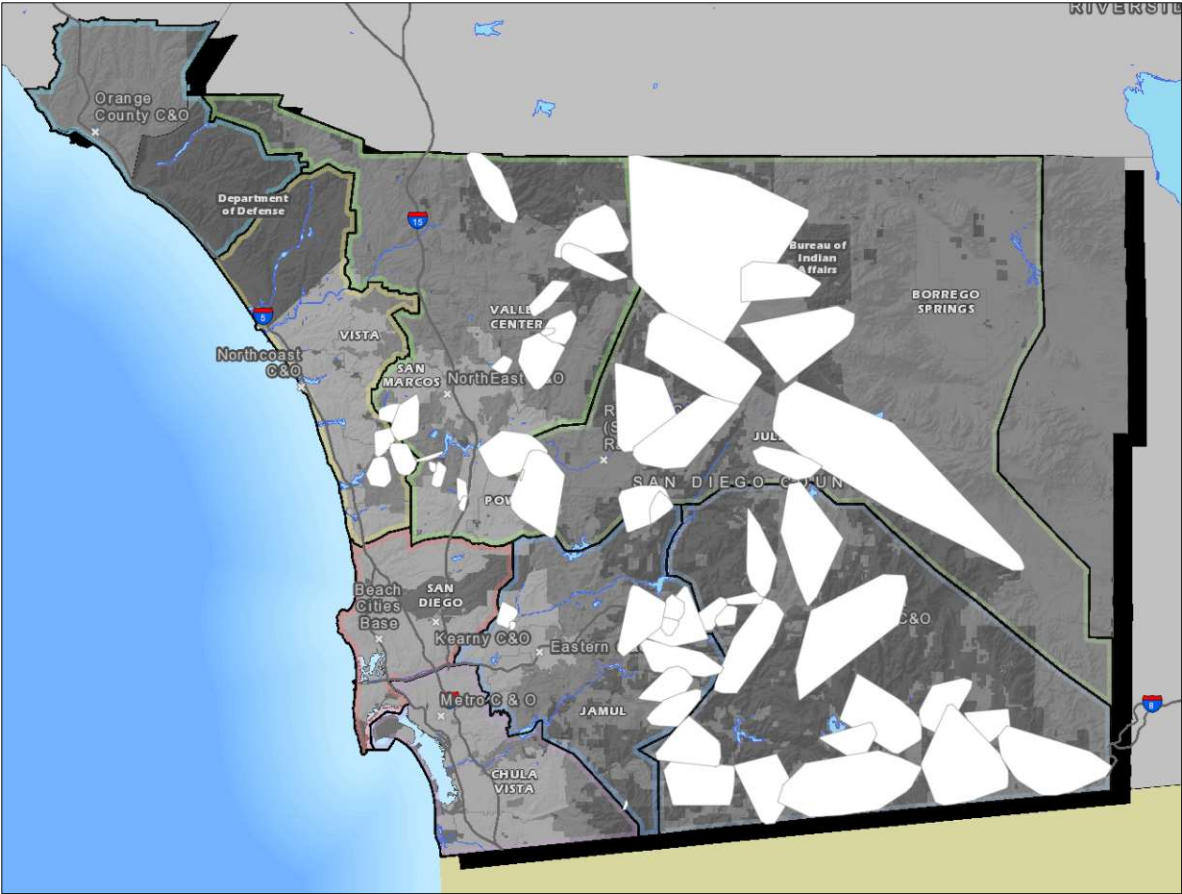
NO RATING	Winds are either not expected, will not contribute to significant fire activity.
MARGINAL	Upon ignition, fires may grow rapidly.
MODERATE	Upon ignition, fires will grow rapidly and will be difficult to control.
HIGH	Upon ignition, fires will grow very rapidly, will burn intensely, and will be very difficult to control.
EXTREME	Upon ignition, fires will have extreme growth, will burn very intensely, and will be uncontrollable.

SANTA ANA WILDFIRE THREAT INDEX (SAWTI)

Scenario Update, Continued – 48 Hours Ahead



Scenario Update, Continued – 48 Hours Ahead



Impacted	Meters
Total Unique Meters	37084

Please note, meters do not equate to the number of household members per meter.





MODULE 1 DISCUSSION

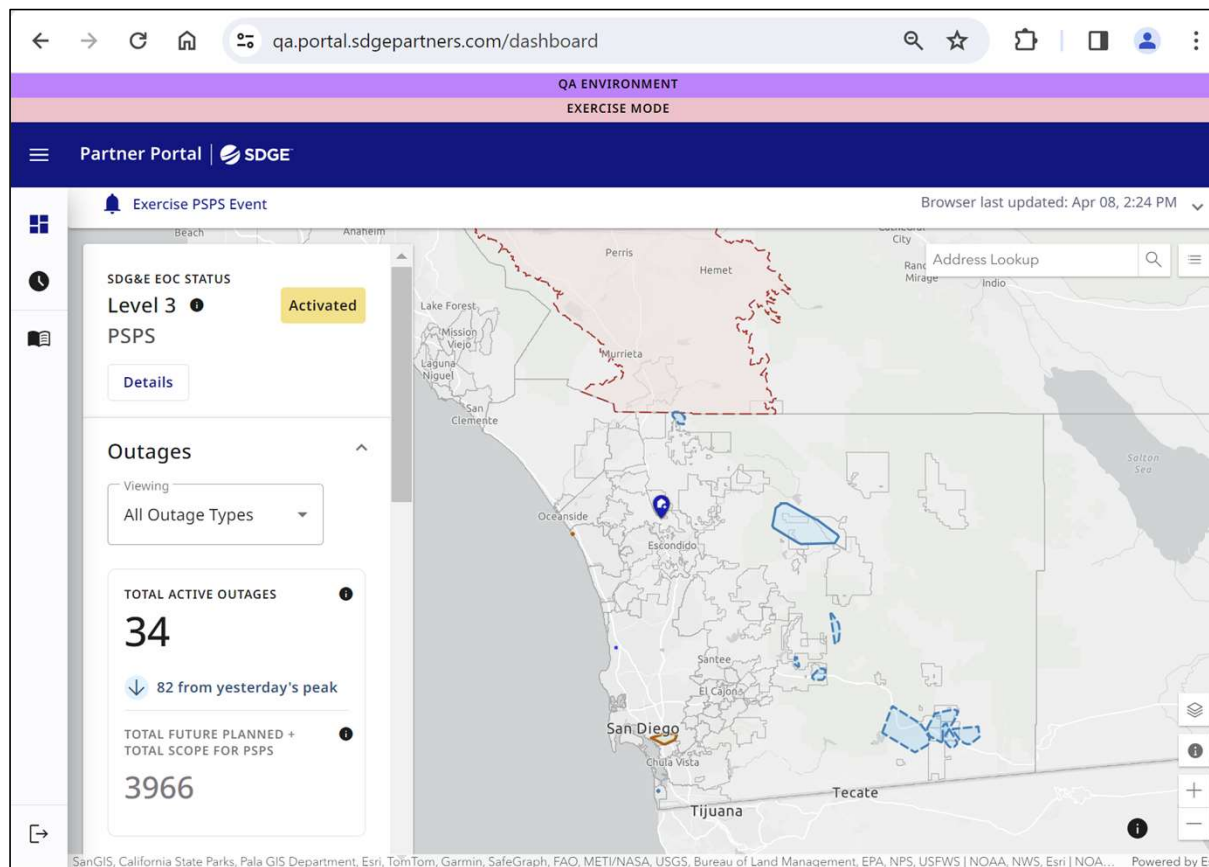
DISCUSSION TOPICS

**Operational
Considerations**

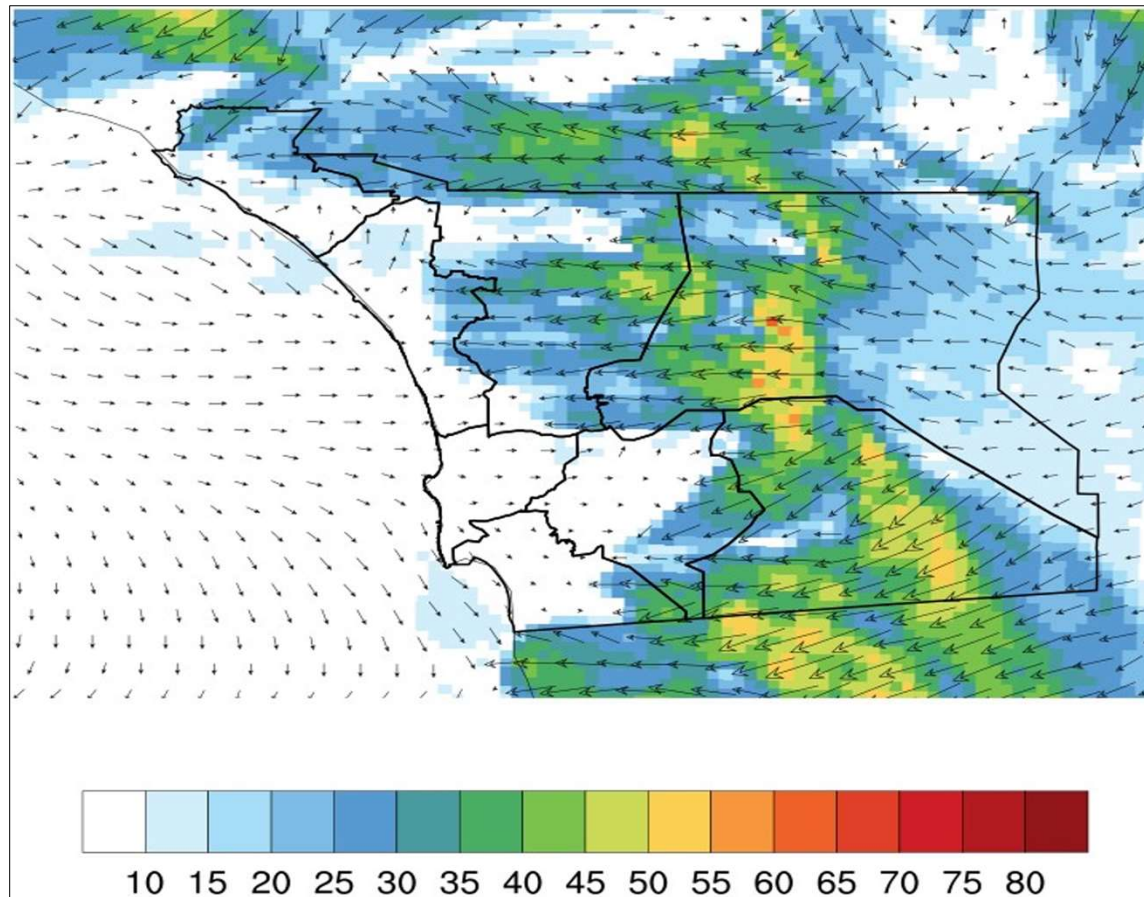
**Notification/
Communication**

**Customer
Success**

Public Safety Partner Portal



Scenario – 24 Hours Ahead



Scenario Update, Continued – 24 Hours Ahead

	Wed 4/10	Thu 4/11	Fri 4/12	Sat 4/13	Sun 4/14	Mon 4/15	Tue 4/16
ME	Elevated 13	Extreme 16	Elevated 14	Elevated 13	Elevated 12	Elevated 12	Normal 11
RA	Elevated 13	Extreme 16	Elevated 14	Elevated 13	Elevated 12	Elevated 12	Normal 11
EA	Elevated 13	Extreme 15	Elevated 14	Elevated 13	Normal 11	Normal 11	Normal 11
NE	Elevated 13	Extreme 15	Elevated 14	Elevated 13	Normal 11	Normal 11	Normal 11
OC	Elevated 13	Extreme 15	Elevated 14	Elevated 13	Normal 11	Normal 11	Normal 11
NC	Elevated 12	Elevated 14	Elevated 13	Elevated 12	Normal 11	Normal 11	Normal 10
BC	Elevated 12	Elevated 13	Elevated 13	Elevated 12	Normal 11	Normal 11	Normal 10
CM	Elevated 12	Elevated 13	Elevated 13	Elevated 12	Normal 11	Normal 11	Normal 10

Scenario Update, Continued – 24 Hours Ahead



SANTA ANA WILDFIRE THREAT INDEX

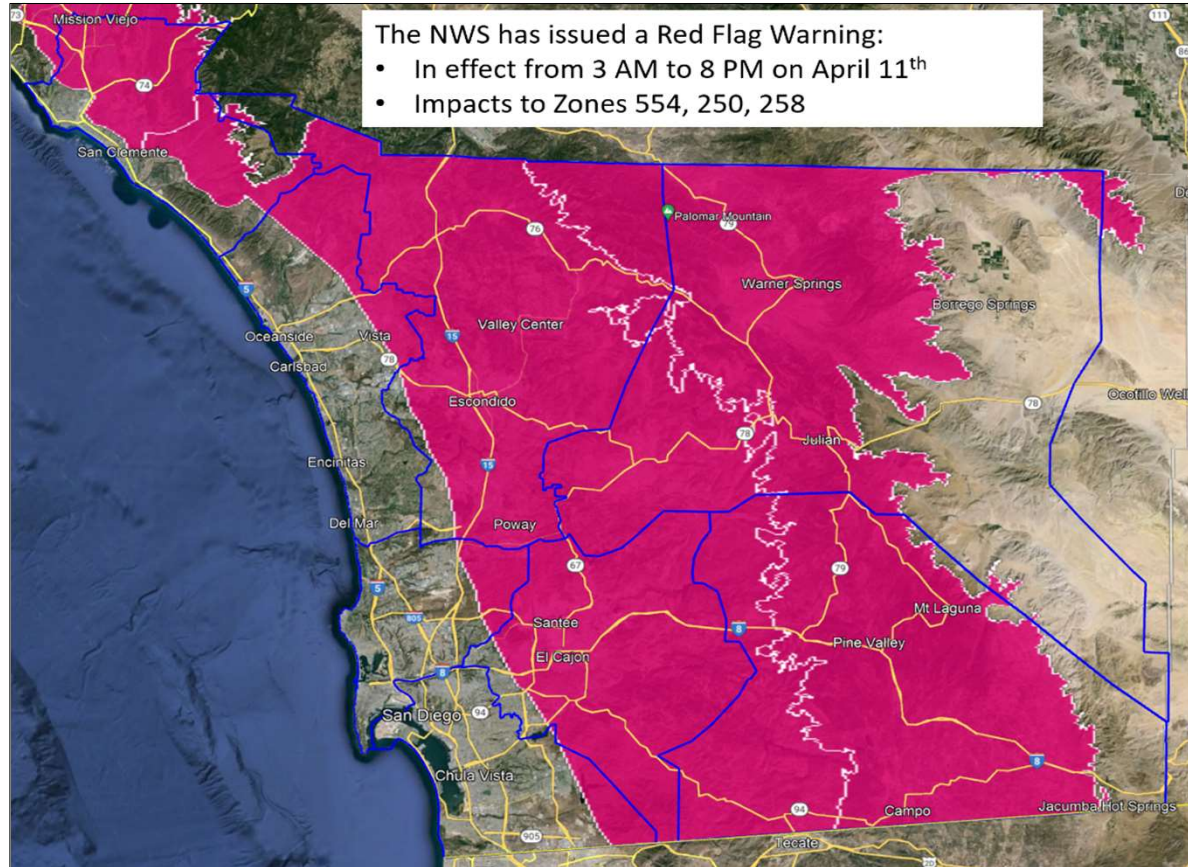


Zones	Wed/Apr 10	Thu/Apr 11	Fri/Apr 12	Sat/Apr 13	Sun/Apr 14	Mon/Apr 15
Zone 1: LA-Ventura						
Zone 2: Orange-Inland Empire						
Zone 3: San Diego						
Zone 4: Santa Barbara						

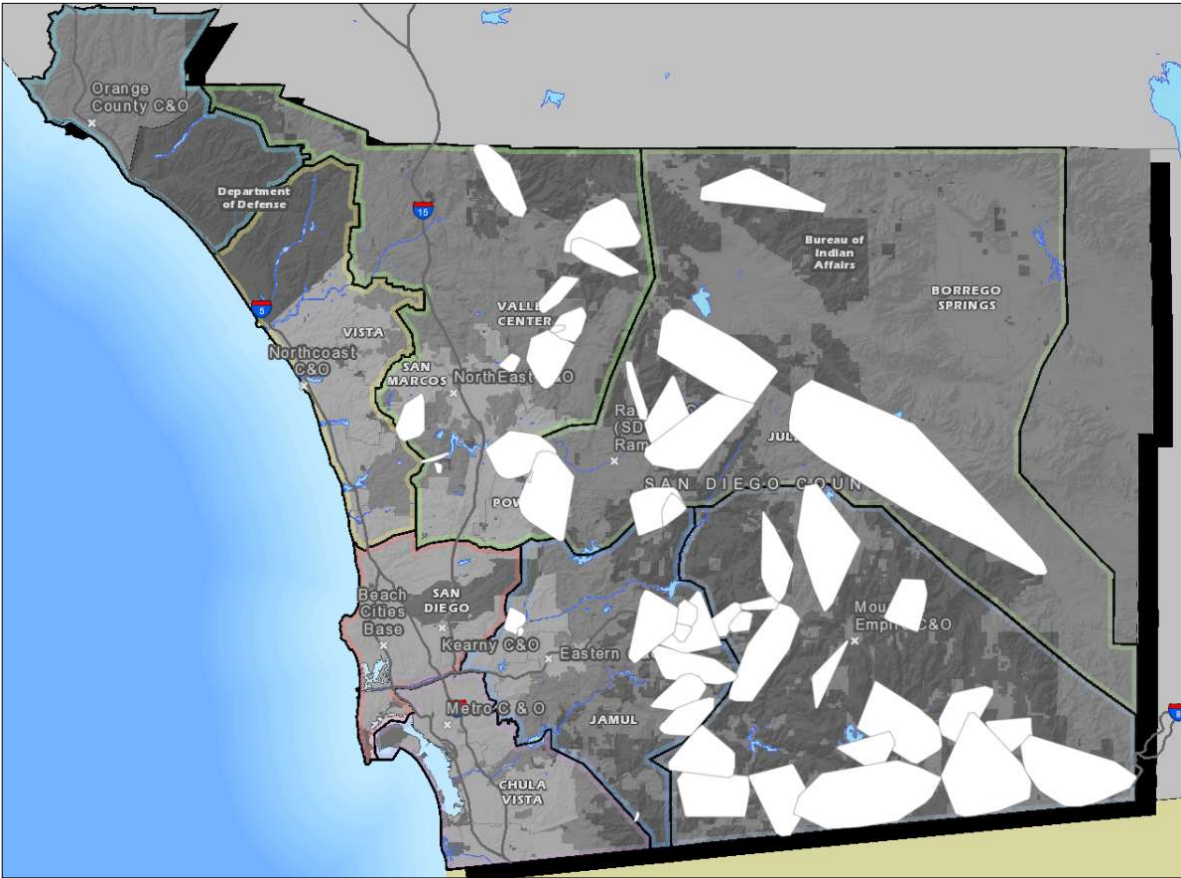
NO RATING	Winds are either not expected, will not contribute to significant fire activity.
MARGINAL	Upon ignition, fires may grow rapidly.
MODERATE	Upon ignition, fires will grow rapidly and will be difficult to control.
HIGH	Upon ignition, fires will grow very rapidly, will burn intensely, and will be very difficult to control.
EXTREME	Upon ignition, fires will have extreme growth, will burn very intensely, and will be uncontrollable.

SANTA ANA WILDFIRE THREAT INDEX (SAWTI)

Scenario Update, Continued – 24 Hours Ahead



Scenario Update, Continued – 24 Hours Ahead



Impacted	Meters
Total Unique Meters	29050

Please note, meters do not equate to the number of household members per meter.





MODULE 1 DISCUSSION

DISCUSSION TOPICS

**Operational
Considerations**

**Notification/
Communication**

**Customer
Success**

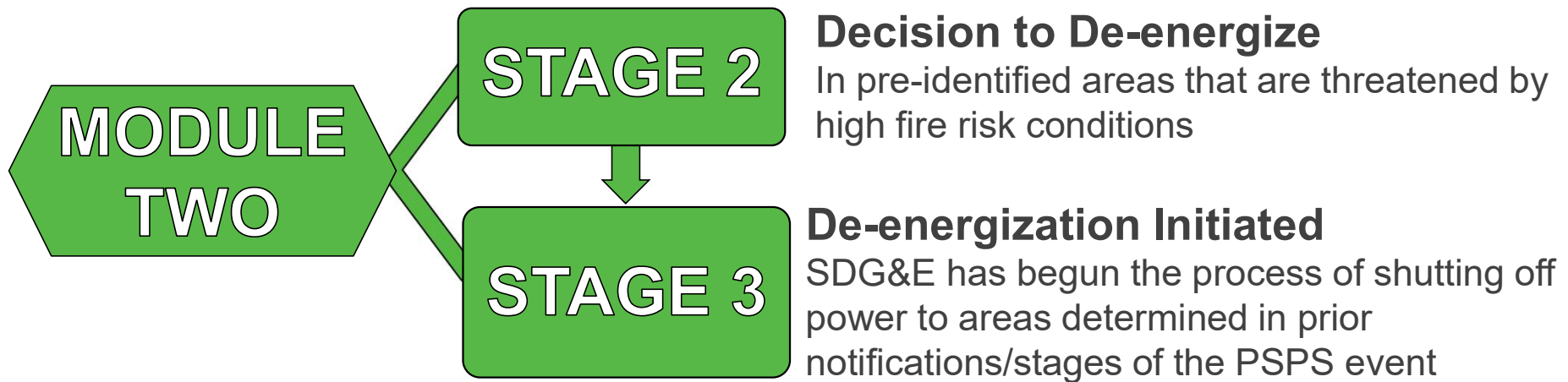


BREAK

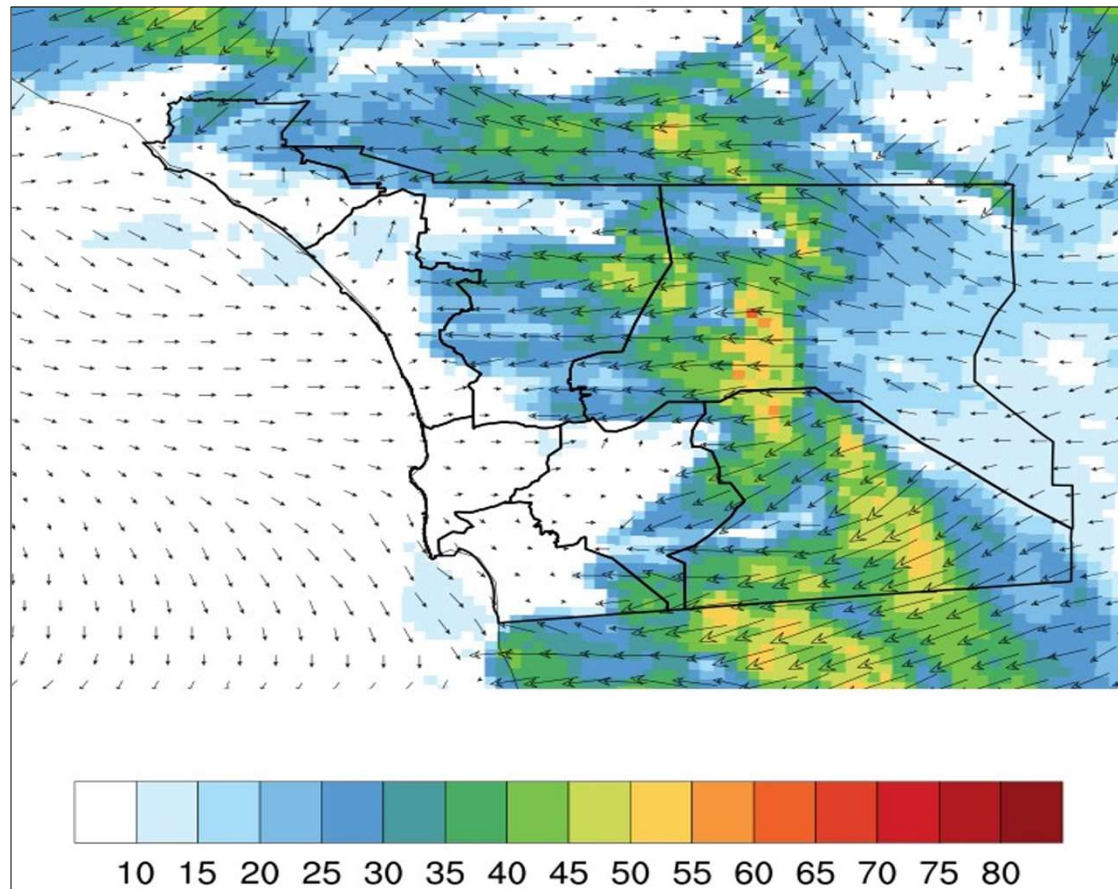


MODULE TWO: DECISION TO DE-ENERGIZE AND DE-ENERGIZATION INITIATED

Module Overview



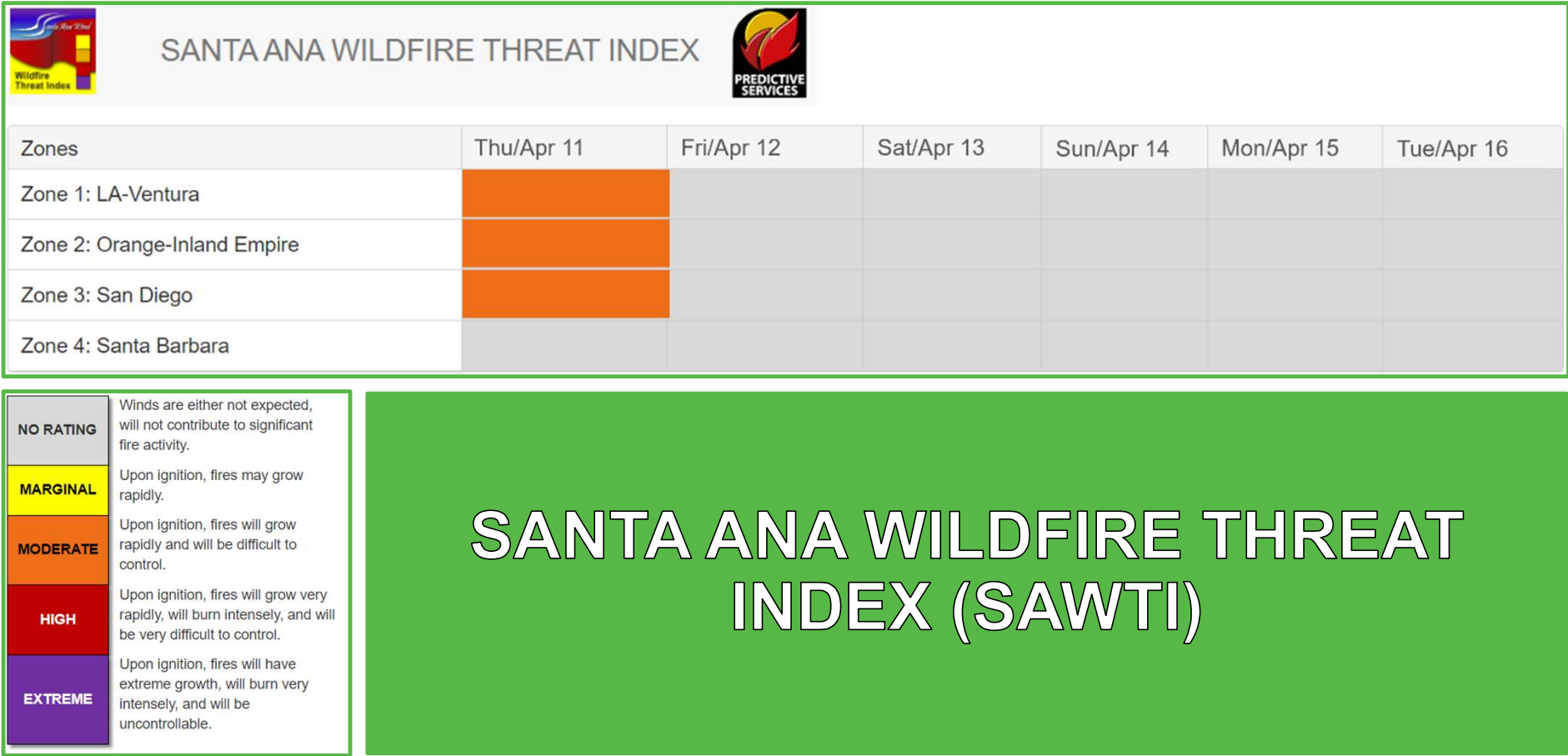
Scenario Update – Day of Event



Scenario Update, Continued – Day of Event

	Thu 4/11	Fri 4/12	Sat 4/13	Sun 4/14	Mon 4/15	Tue 4/16	Wed 4/17
ME	Extreme 16	Elevated 14	Elevated 13	Elevated 12	Elevated 12	Normal 11	Normal 11
RA	Extreme 16	Elevated 14	Elevated 13	Elevated 12	Elevated 12	Normal 11	Normal 11
EA	Extreme 15	Elevated 14	Elevated 13	Normal 11	Normal 11	Normal 11	Normal 11
NE	Extreme 15	Elevated 14	Elevated 13	Normal 11	Normal 11	Normal 11	Normal 11
OC	Extreme 15	Elevated 14	Elevated 13	Normal 11	Normal 11	Normal 11	Normal 11
NC	Elevated 14	Elevated 13	Elevated 12	Normal 11	Normal 11	Normal 10	Normal 10
BC	Elevated 13	Elevated 13	Elevated 12	Normal 11	Normal 11	Normal 10	Normal 10
CM	Elevated 13	Elevated 13	Elevated 12	Normal 11	Normal 11	Normal 10	Normal 10

Scenario Update, Continued – Day of Event





MODULE 2 DISCUSSION


DISCUSSION TOPICS

**Operational
Considerations**

**Notification/
Communication**

**Customer
Success**

PSPS Dashboard

SDGE™ PSPS Dashboard

DeEnergized Areas

Critical Facility Details

30 Second Read

EOC Web Resources

PSPS Guide

Training

Anemometer	Notification to DeEnergize	Device	Gust	Alert Speed	Gust - Alert Speed	Forecast	Projected Meters	Projected MBL	Community (Tribe)
Pacific Crest Trail		448-714R*	21	45	-24	38	523	41	Campo
East Warners		WR-12KV-211	20	45	-25	33	285	21	Ranchita (Santa Ysabel Reservation)
Round Potrero		157-232R*	19	45	-26	41	341	18	Potrero
Lucky Five Ranch		79-685R*	19	45	-26	40	5	-	Julian
Corte Madera		442-16R*	18	45	-27	30	26	-	Pine Valley
Lake Cuyamaca		79-660R*	17	45	-28	32	212	5	Julian
Hoskings Ranch		221-1230F (JU1, OK1, SL1)	17	45	-28	41		-	Julian
Hoskings Ranch		222-1364R (PE1)	17	45	-28	41	433	27	Julian (Mesa Grande Reservation, Santa Ysabel Reservation)
Shockey Truck Trail		448-9R	17	45	-28	35	1026	84	Campo (Campo Reservation)
School House Canyon		220-294R*	17	45	-28	43	292	16	Santa Ysabel (Santa Ysabel Reservation)
Tierra Del Sol		445-24R*	17	45	-28	33	166	10	Boulevard (Campo Reservation)
Cameron Corners		CN-12KV-448	16	45	-29	25	1031	86	Campo (Campo Reservation)
West Potrero		157-189R*	16	45	-29	32	250	6	Potrero
Cameron Corners		CN-12KV-449	16	45	-29	25	629	53	Campo
White Star		445-894R*	16	45	-29	35	176	11	Boulevard (Campo Reservation)
Crestwood		1215-12R*	16	45	-29	43	134	9	Boulevard (La Posta Reservation, Campo Reservation, Manzanita Reservation)
Crestwood		445-1311R*	16	45	-29	43	179	12	Boulevard (Campo Reservation)
Potrero		448-735R*	16	45	-29	42	111	5	Potrero
Crestwood		445-1325F*	16	45	-29	43	90	8	Boulevard (Campo Reservation)
Campo		448-724R	16	45	-29	30	154	9	Potrero
Sherilton Valley		79-808R*	16	45	-29	40	88	4	Descanso
Pine Hills		222-1364R (PE1)	15	45	-30	28	433	27	Julian (Mesa Grande Reservation, Santa Ysabel Reservation)
Los Coyotes		WR-12KV-210	15	45	-30	26	211	14	Warner Springs (Los Coyotes Reservation)
Witch Creek		222-1370R*	15	45	-30	36	407	26	Ramona (Mesa Grande Reservation, Santa Ysabel Reservation)
North Potrero		448-47R*	15	45	-30	38	66	4	Potrero
Guatay		79-676R	15	45	-30	24	690	39	Descanso
Julian		221-36 (JU1, OK1, SL1)	14	45	-31	30	1628	85	Julian

Alert Wind Speed

>= Alert Speed

Alert Speed -7 MPH

Last Updated Time

04/11/2024 10:28

Next Update In

53 seconds

Temporary Configuration and/or Compliance Poles

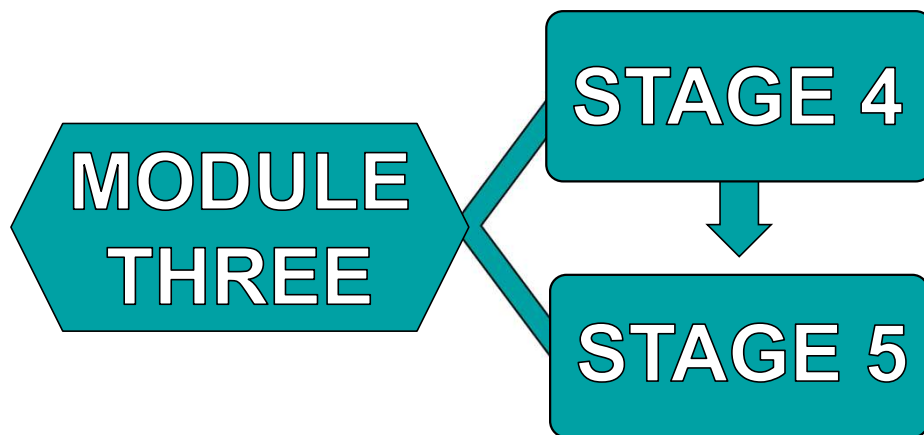
= *





MODULE THREE: INITIATING RE-ENERGIZATION PROTOCOLS AND ALL PSPS LINES RE-ENERGIZED

Module Overview

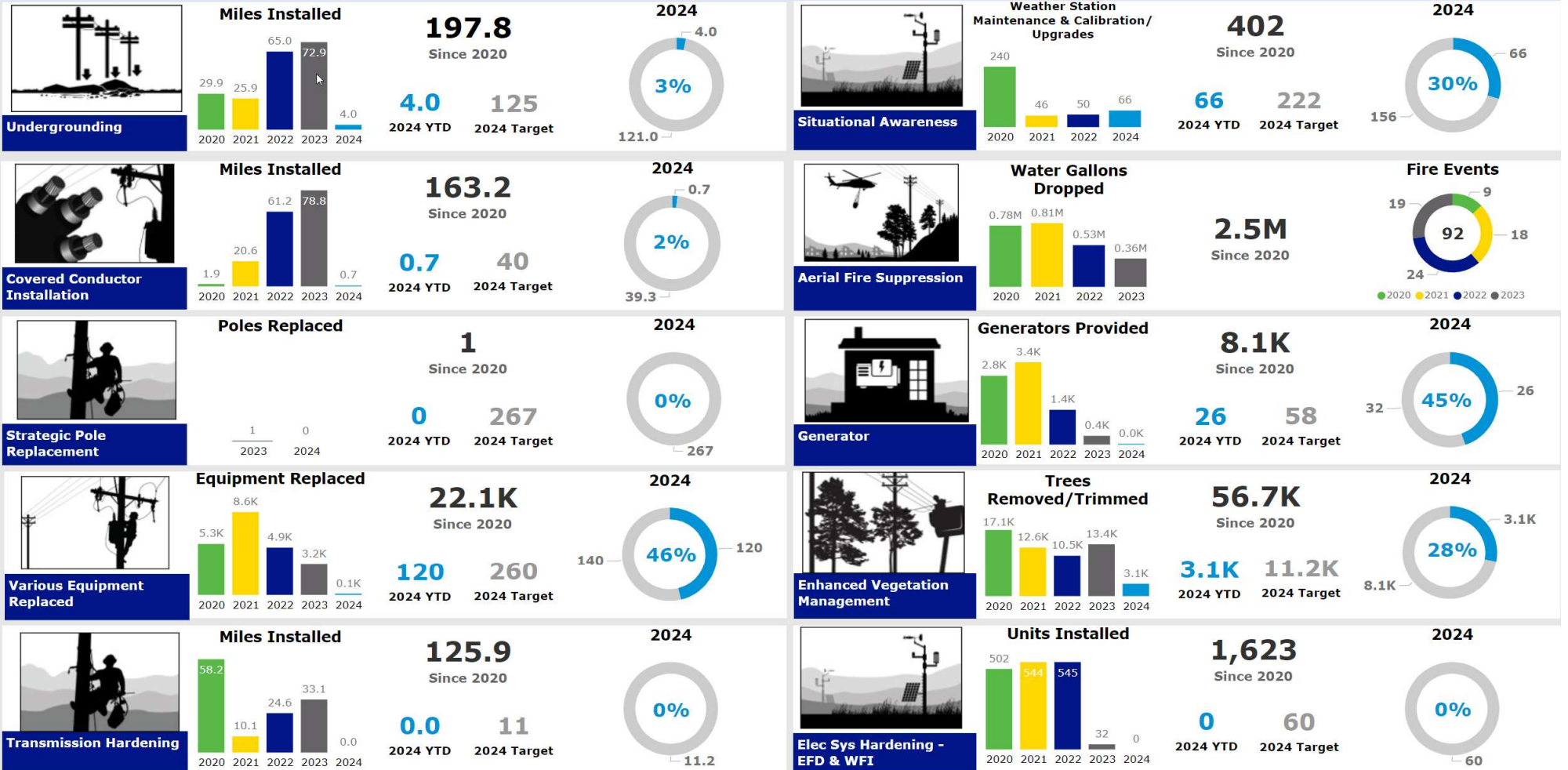


Initiating Re-energization Protocols

It is determined that the weather event has subsided and power lines can now be inspected for safety so that re-energization can take place

All PSPS Lines Re-energized

All lines de-energized by the PSPS event have been restored re-energized





HOTWASH AND SURVEY

HOTWASH

- While we are completing our discussion, please take a minute to complete the survey via QR code.
- For virtual attendees, please complete it via the link provided in chat.





CLOSING REMARKS



Key Contacts

SDG&E EM Training & Exercise
EMTrainingExercise@sdge.com

Jessica Kunert – SDG&E Emergency Management
jkunert@sdge.com

Sarah Gladys – SDG&E Emergency Management
sglady1@sdge.com

